

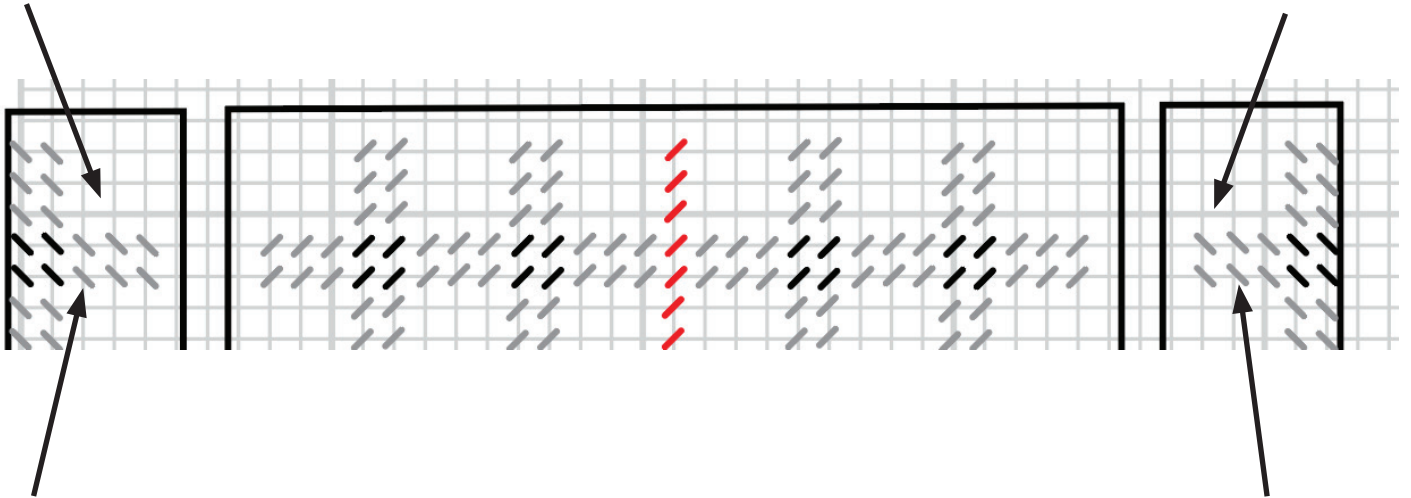
No. 30054

Winter Welcome Coasters

Although we make every effort to prevent errors from being published, we regret that they do occur and apologize for any inconvenience this may cause. The graph for the Lid Sides had 3 Dk. Grey stitches on the 10's bar and they should have been moved down. Below is the correction.

Where they were

Where they were



Where they should be

Where they should be