

0.24W
0.48W
0.72W

25LM
50LM
80LM

180*140°

IP67

LifeSpan
50,000h

MINI Module for 2-6cm Depth Signs

Injection molding plus ultrasonic welding technology,
protection grade up to IP67.
Diamondback 180*140° optic lens with uniform illumination.



Features >

- Powered by high output 2835 LED.
- 99.99% gold thread, pure copper bracket coated with silver.
- Diamondback 180*140° optic lens.
- 40 pcs per string.
- CE, RoHS and UL certified.

Application >

- Apply to 2-6cm depth signs at airports, metros, banks, buildings and shopping malls, etc.

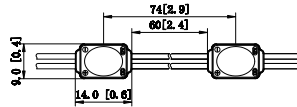
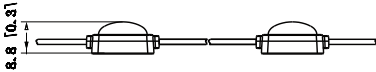
Parameters >

Items	Parameters		
Part Number	ZE01CA1	ZE02CA1	ZE03CA1
CCT (K)	7000K	7000K	7000K
Beaming Angle (°)	180*140	180*140	180*140
CRI (Ra)	≥75	≥75	≥75
Luminous Flux (lm)	25	50	80
Voltage (V)	DC12	DC12	DC12
Power (W)	0.24	0.48	0.72
Driving Method	Constant Voltage	Constant Voltage	Constant Voltage
Dimension (mm)	14*9*8.8	26*9*9	38*9*9
Working Tem. (°C)	-25 ~ +60	-25 ~ +60	-25 ~ +60
Storage Tem. (°C)	-25 ~ +70	-25 ~ +70	-25 ~ +70
Protection Grade	IP67	IP67	IP67

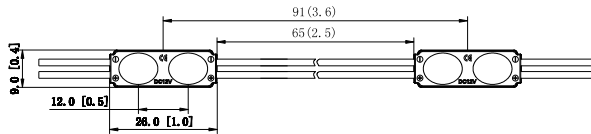
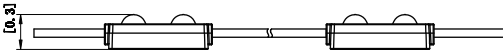
Dimension >

Unit:mm

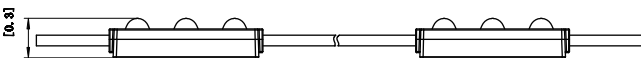
ZE01CA1



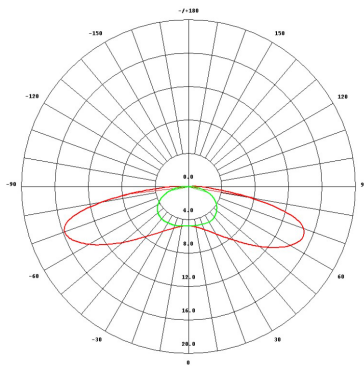
ZE02CA1



ZE03CA1



Beaming Angle >



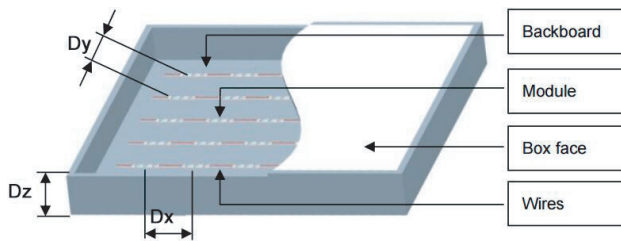
180*140°

Reference Scheme >

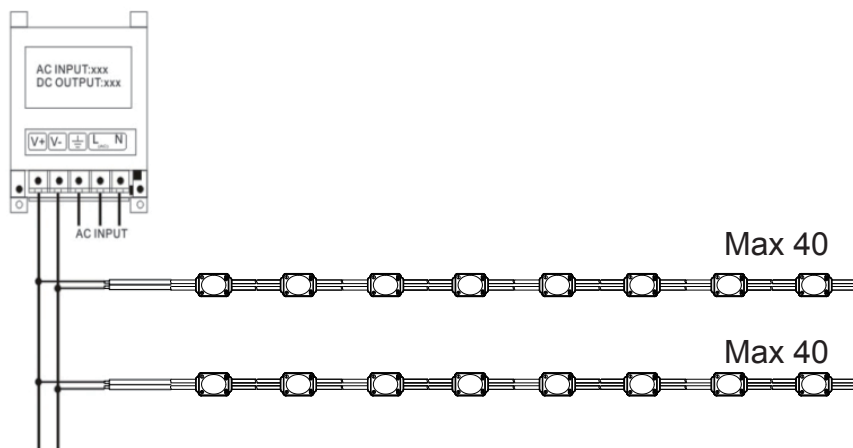
Depth(mm)	Size(mm)	Square(m ²)	Distance(mm)	Density(pcs/m ²)	Illumination(lux)
20	120*120*20	0.24	30	50	5500-6000
30	140*140*30	0.24	40	50	5000-5400
40	160*160*40	0.24	50	50	4000-4500
50	180*180*50	0.24	60	50	3500-3700
60	200*200*60	0.24	70	50	3300-3500

Remark:

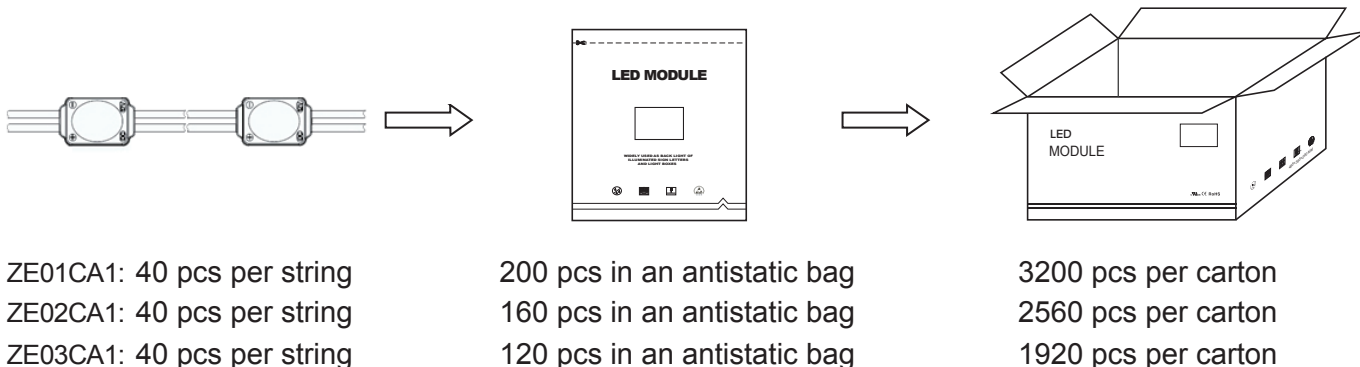
- The acrylic plate in the case is 3mm thickness, and the light transmittance is 54.4%.
- The illumination above is the minimum data when evenly lighted.
- The above data is for reference only.



Wire Connection >



Packing



Packing Specification

- Antistatic bag adopted
- Packing information

Part Number	ZE01CA1	ZE02CA1	ZE03CA1
Carton dimension(mm)	390*290*340	390*290*340	390*290*340
Bags per carton	16	16	16
Quantity per carton(pcs)	3200	2560	1920
Net Weight(kg)	6(1±10%)	7.2(1±10%)	7.8(1±10%)
Gross Weight(kg)	7.5(1±10%)	8.7(1±10%)	9.3(1±10%)

- Due to the packing manner difference, please adhere to the original products in case of discrepancy found between the picture and actual product.

Warning

- Disassembling or modifying the product is forbidden.
- Installation with power on is forbidden.
- Any organic solvent chemical is forbidden.
- Acidic or alkaline adhesive is forbidden when install, neutral glass cement could be used for installation purpose, make it drying in open environment for four hours.
- Isolation and corrosion prevention on all wiring points and wire ends.
- Make sure the power wire is thick enough and ensure the voltage and connections are connected correctly before power on.
- This product should be used in a sign, do not expose it in opening site.
- Installation, maintaining should be done by professional staff.
- 40 pcs in a serial connection maximum.
- The power wire between power supply and module should be less than two meters to keep the same brightness on all parts.
- Attached with 3M tape.

Declaration >

- Warranty: 5 years.
- In order to ensure the safety, the broken wires need to be replaced by the manufacturer or the service agent, or by the staff with the similar qualification.
- The given data in the specification was based on the laboratory testing, there may be discrepancy found in the actual products.
- The given drawings in the specification are only for reference, there may be discrepancy found in the actual products.
- The products are subject to change without prior notification.



RoHS

Company Address:

Rm. WS, 9F, LuBan Building, Hongli West Road, Futian District,
Shenzhen, China 518034

Factory Address:

No. B, Xinyongfeng Industrial Area, Yingrenshi Village, Shiyuan Town,
Bao'an District, Shenzhen, China 518000

TEL: +86-755-83544570

FAX: +86-755-83056229

Website: www.lbyled.com

E-mail: info@lbyled.com



LBY LED®
signs never been so easy