

Features >

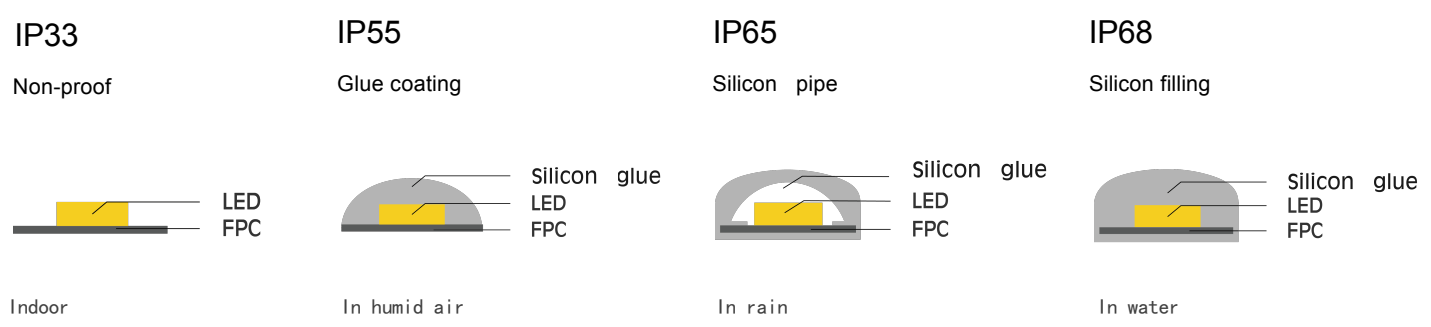
- Sourced by high output 5050 LED with good color conformity.
- 99.99% gold thread, pure copper bracket coated with silver.
- USA Intematix phosphor with CRI>80.
- SDCM≤5 each BIN.
- Double layer rolled copper FPC.
- 3M 300LSE tape attached.
- CE, RoHS and UL certified.

Application >

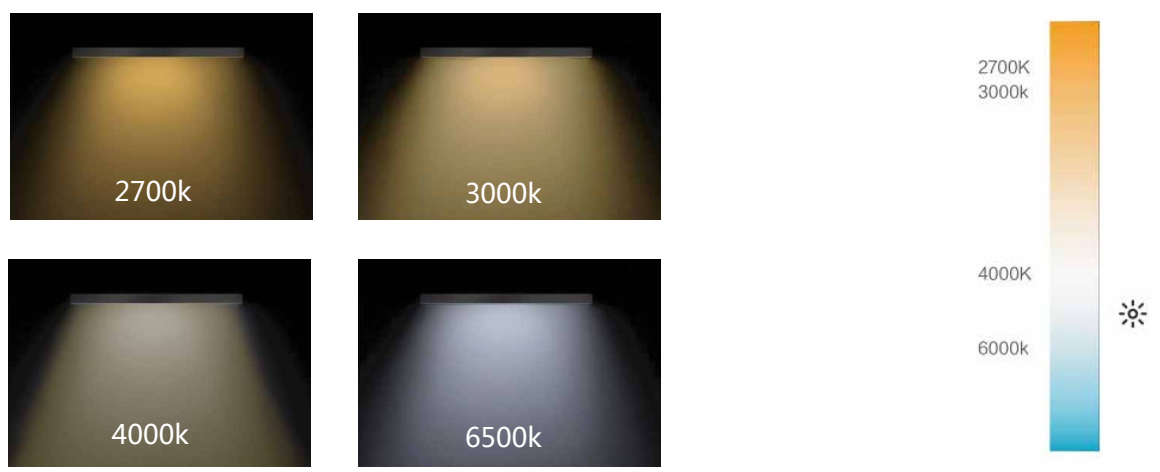
- City lighting, landscape lighting, commercial lighting and house contour lighting, etc.

Advantages >

Different IP options



Full CCT ranges from 2300K to 12000K



Various CRI option from 75 to 95

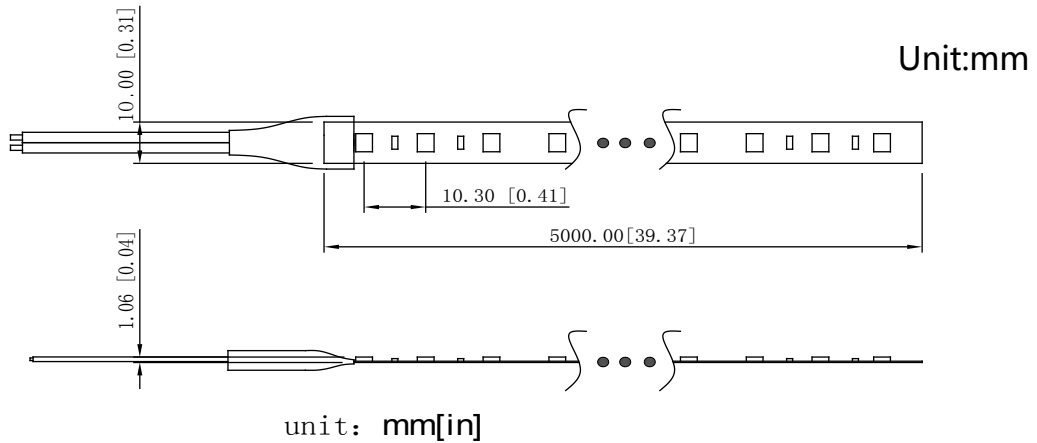


Parameters >

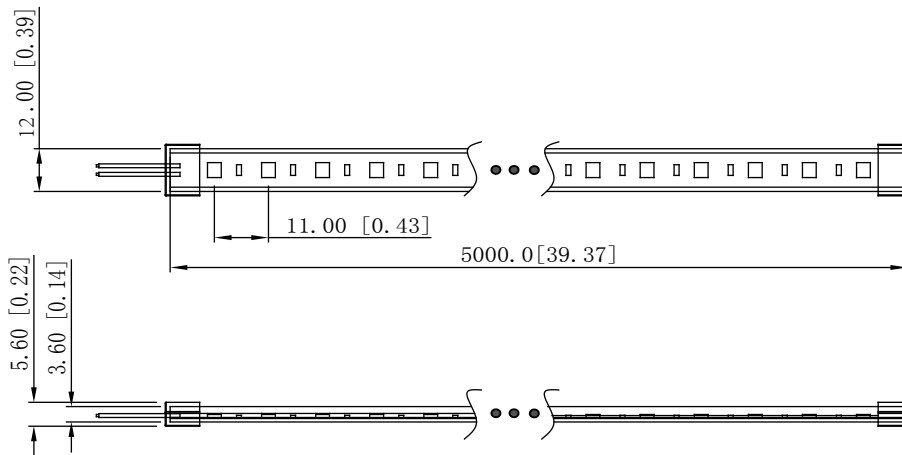
Part Number	Dimensions(mm)	LED Type	LEDs/m	Voltage(V)	Power(W/m)	LM/LED	CCT/K	IP Grade
SH30LA1	5000*10	SMD 5050	30	DC12/24	6	23	6500	IP33
SH30JA1	5000*12	SMD 5050	30	DC12/24	6	23	6500	IP68
SH60LA1	5000*10	SMD 5050	60	DC12/24	12	23	6500	IP33
SH60JA1	5000*12	SMD 5050	60	DC12/24	12	23	6500	IP68

Dimension >

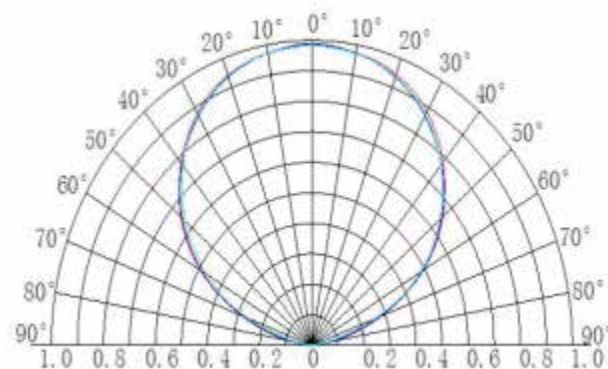
IP33



IP68

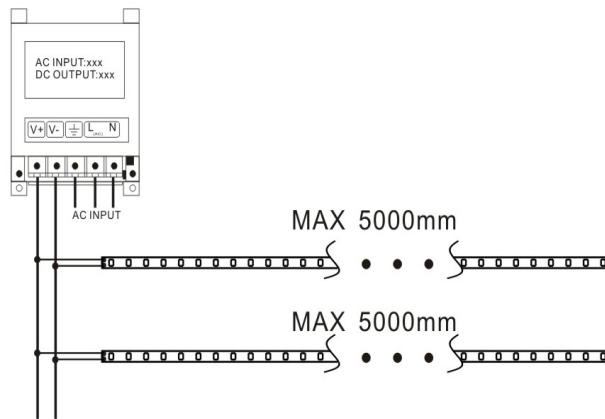


Beaming Angle >

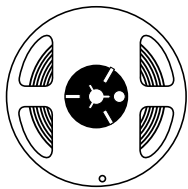


Wire Connection >

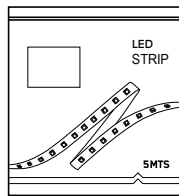
White&Red wire to positive
White&Black wire to negative



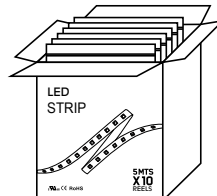
Packing >



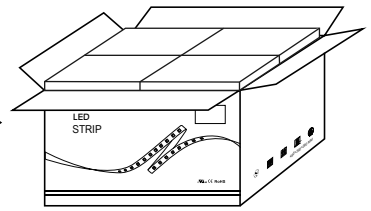
5 meter per roll



One roll per antistatic bag



10 rolls per box



450m per carton IP33
200m per carton IP68

Packing Specification >

- Antistatic bag adopted
- Packing information

Part Number	Carton dimension(mm)	Bags per carton(pcs)	Quantity per carton(m)	Net Weight(kg)	Gross Weight(kg)
SH30LA1	495*450*215	90	450	6.5	9.2
SH30JA1	495*395*290	40	200	11.5	16.0
SH60LA1	495*450*215	90	450	7.2	9.8
SH60JA1	495*395*290	40	200	12	16.5

- Due to the packing manner difference, please subject to the actual package in case of discrepancy found between the datasheet and actual package.

Warning



- Disassembling or modifying the product is forbidden.
- Installation with power on is forbidden.
- Any organic solvent chemical is forbidden.
- Isolation and corrosion prevention on all wiring points and wire ends.
- Make sure the power wire is big enough and ensure the voltage and connection are all correct before power on.
- Installation, maintenance should be done by professional staff.
- 5M in a serial connection maximum for DC12/24V strips.
- The power wire between power supply and LED strips should be less than two meters to keep the same brightness on all parts.

Declaration



- Warranty: 3 years.
- To ensure the safety, the broken wires need to be replaced by the manufacturer or the service agent, or by the qualified staff.
- The given data in the specification is the laboratory data, there may be discrepancy found in the actual products.
- The given drawings in the specification are only for reference, there may be discrepancy found in the actual products.
- The products are subject to change without prior notification.



RoHS

Company Address:

Rm. WS, 9F, LuBan Building, Hongli West Road, Futian District,
Shenzhen, China 518034

Factory Address:

No. B, Xinyongfeng Industrial Area, Yingrenshi Village, Shiyuan Town,
Bao'an District, Shenzhen, China 518000

TEL: +86-755-83544570

FAX: +86-755-83056229

Website: www.lbyled.com

E-mail: info@szlby.cn



LBY LED
signs never been so easy