



*CMH Series*

*CO2 Laser Cutting Machine*

专注激光设备制造**18**年，畅销全球**100**多个国家

FOCUS ON LASER EQUIPMENT MANUFACTURING FOR 18 YEARS, SERVE GLOBAL CUSTOMERS IN MORE THAN 100 COUNTRIES

# Key Point of the Update on CMH series

1. CMH common model shares the same frame with K model(with up&down table);
2. Machine with small camera keeps the same height as common model;
3. All models adopt transmission system with inner rail; Update on the general spare parts, increasing its universality greatly;



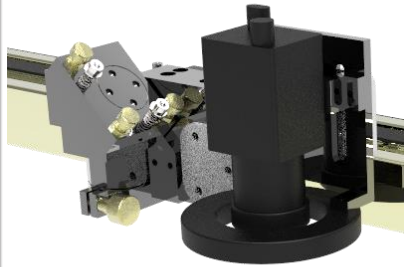
All CMH models can be overstowed in 40HQ container, without uninstalling the machine feet to save both freight and labor cost ;

## Main functions

Top camera



CCD camera



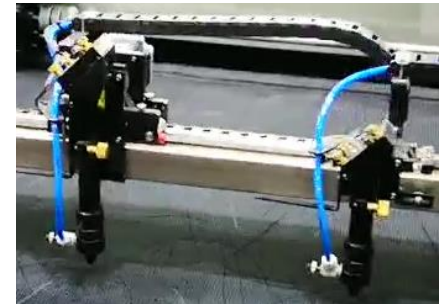
Projector



Up&down table



Electric Double heads



# Machine function

Machine series	Machine model	Function code				
		E :Electronic head	K: Up&down table	V:CCD camera	V1: Top camera	X:Projector
CMH0604	CMH0604-B-A	×	○	×	×	×
CMH1008	CMH1008-B-A	×	○	○	×	○
	CMH1008-T-A	○	○	×	×	○
CMH1206	CMH1206-B-A	×	×	×	×	×
	CMH1206-T-A	○	×	×	×	×
CMH1309	CMH1309-B-A	×	○	○	○	○
	CMH1309-T-A	○	○	○	○	○
CMH1610	CMH1610-B-A	×	×	○	○	○
	CMH1610-T-A	○	×	○	○	○
CMH1612	CMH1612-B-A	×	×	○	○	○
	CMH1612-T-A	○	×	○	○	○
	CMH1612-Q-A	○	×	×	×	○

Function code :

Lifting : **K**

Electronic head : **E**

Projector : **X**

CCD camera : **V**

Vision camera : **V1**

○: available

×: unavailable

**Please choose the machine with the needed function.**

## Laser power range for CMH

Machine series	Machine model	Glass Tube ( watt )							RF Tube ( watt )			
		60	80	100	130	140	150	180	30	55	60	100
CMH0604	CMH0604-B-A	○	○	○	○	×	×	×	○	○	○	○
CMH1008	CMH1008-B-A	○	○	○	○	○	○	○	○	○	○	○
	CMH1008-T-A	○	○	○	○	×	×	×	TEST BEFORE ORDER			
CMH1206	CMH1206-B-A	○	○	○	○	○	○	○	○	○	○	○
	CMH1206-T-A	○	○	○	○	×	×	×	TEST BEFORE ORDER			
CMH1309	CMH1309-B-A	○	○	○	○	○	○	○	○	○	○	○
	CMH1309-T-A	○	○	○	○	○	○	○	○	○	○	○
CMH1610	CMH1610-B-A	○	○	○	○	○	○	○	○	○	○	○
	CMH1610-T-A	○	○	○	○	○	○	○	○	○	○	○
CMH1612	CMH1612-B-A	○	○	○	○	○	○	○	○	○	○	○
	CMH1612-T-A	○	○	○	○	○	○	○	○	○	○	○
	CMH1612-Q-A	○	○	○	○	○	×	×	×	×	×	×

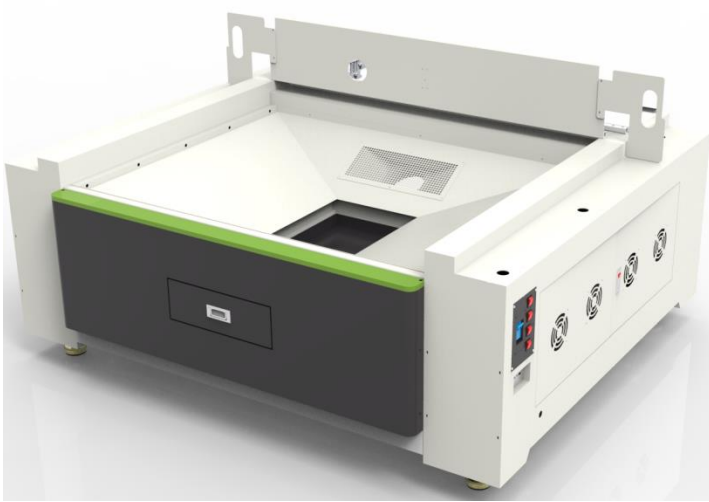
150W and above, water cooling lens holder; under 150W, air cooling lens holder

## Front view and Rear view of CMH machine



## Bottom and Top of CMH machine

Cabinet



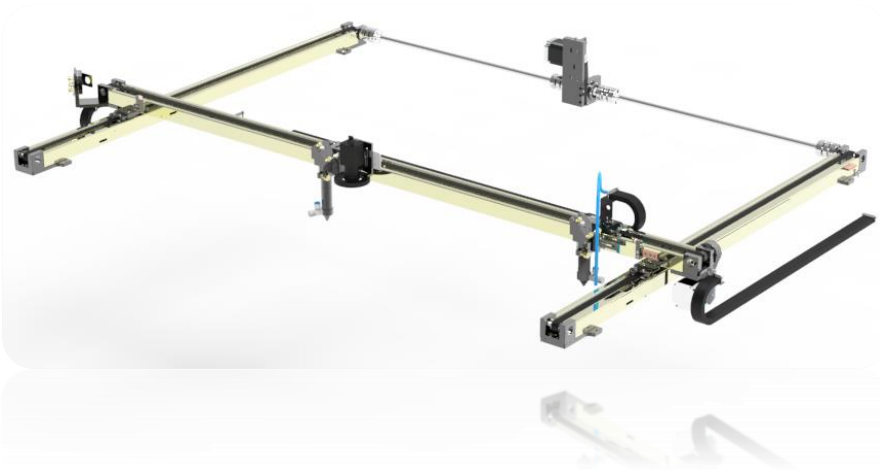
Cover



1. The collect box is dismountable in order to install the lifting system.
2. Redesign the collecting box to improve the exhaust system.
3. Machine with various configurations(universal version, CCD camera, single or double heads) share the same upper cover.

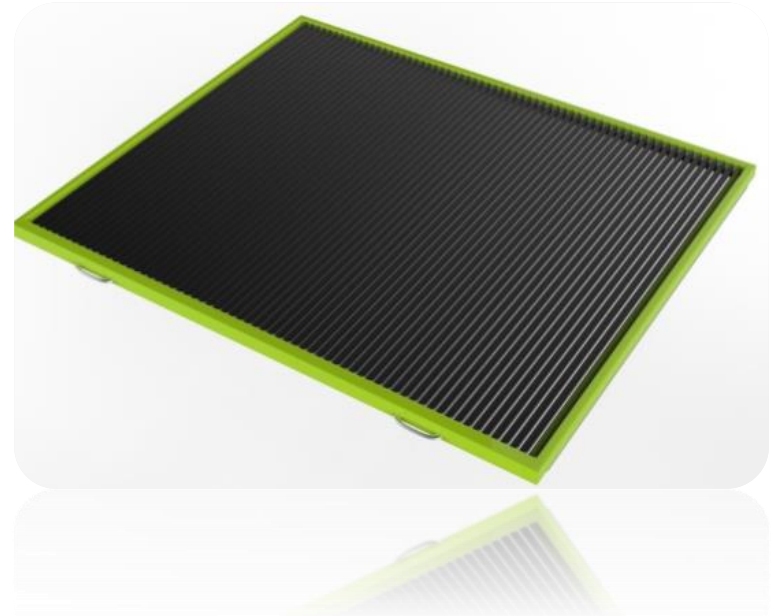
## Inside of the CMH machine

Transmission system



Cancel the bearing beam of the Guide beam.

Working table





## Optional function: Up & down table



The lifting system can be installed into the standard machine directly, just removing the collecting box.

## Optional function: Top Camera



With the top camera install into the machine, the cover will be removed.

Full cover with top cover is optional



## Optional function: Projector



With this function the operator is able to align the material to the exact cutting area to ensure the cutting accuracy. The cover has to be removed while install the projector.

## Working Parameter (standard configuration, single head, 100W)

Machine	CMH0604-B-A	CMH1008-B-A	CMH1206-B-A	CMH1309-B-A	CMH1610-B-A	CMH1612-B-A
Working area	600*400mm	1000*800mm	1200*600mm	1300*900mm	1600*1000mm	1600*1200mm
Laser power(W)	100W					
Transmission system	inner guide rail transmission system					
Speed (mm/s)	0-500					
Re-position accuracy(mm)	±0.1					
Picture format	PLT, AI, DXF, DST, DSB, BMP, JPG, GIF, PNG etc					
Working ensnarement	Temperature 5-40℃ : Humidity : 5%~80% , Non condensate					
Capacity(KW)	<1.25 ( Only the laser machine )					
Power supply	220V/50Hz/60Hz					
Weight (laser machine)	260kg	340kg	340kg	380kg	410kg	510kg
Dimension(mm)	1900*1060*1100	2020*1580*1100	1970*1380*1100	1900*1700*1100	2220*1780*1100	2220*2230*1100

## Working Parameter (standard configuration, double heads, 100W)

Machine	CMH1008-T-A	CMH1206-T-A	CMH1309-T-A	CMH1610-T-A	CMH1612-T-A
Working area	1000*800mm	1200*600mm	1300*900mm	1600*1000mm	1600*1200mm
Laser power(W)	100				
Transmission system	Inner guide rail transmission system				
Speed(mm/s)	0-500				
Re-position accuracy(mm)	±0.1				
Picture format	PLT, AI, DXF, DST, DSB, BMP, JPG, GIF, PNG etc				
Working ensnarement	Temperature 5-40°C : Humidity : 5%~80%, Non condensation;				
Capacity(KW)	<2.05				
Power supply	220V/50Hz/60Hz				
Weight(laser machine)	340kg	340kg	380kg	410kg	510kg
Dimension(mm)	2020*1580*1100	1970*1380*1100	1900*1700*1100	2220*1780*1100	2220*2230*1100

## Working Parameter (standard configuration, four heads, 100W)

<b>Machine</b>	<b>CMH1612-Q-A</b>
Working area	1600*1200mm
Laser power(W)	100
Transmission system	Inner guide rail transmission system
Speed(mm/s)	0-500
Re-position accuracy(mm)	±0.1
Picture format	PLT, AI, DXF, DST, DSB, BMP, JPG, GIF, PNG etc
Working ensnarement	Temperature 5-40°C : Humidity : 5%~80% , Non condensate
Capacity(KW)	3.7
Power supply	220V/50Hz/60Hz
Weight(laser machine)	540kg
Dimension(mm)	2220*2230*1100

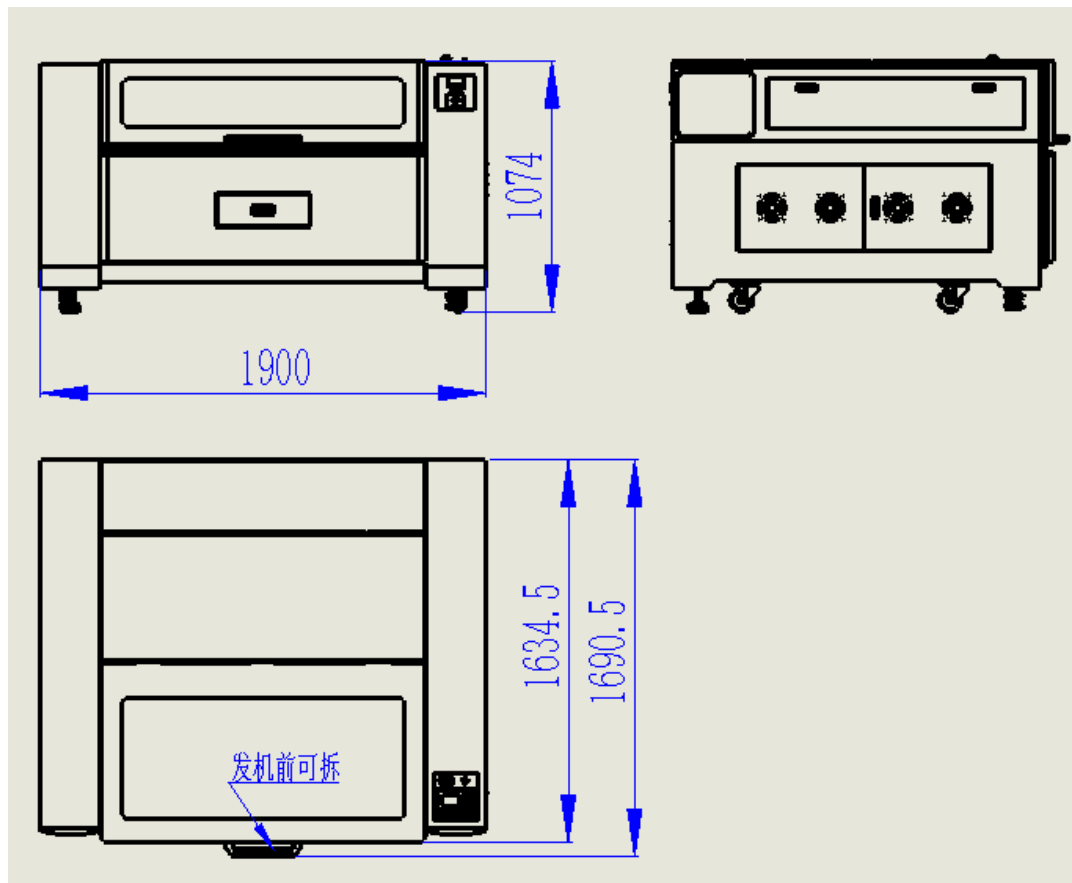
## Configuration

	No.	Item	Option	Configuration	Quantity	
Laser Machine	1	Laser tube	●	60W/80W/100W/130W	1	China
	2	Reflect mirror	●	Φ25mm×3mm	3	China/Imported
	3	Focus lens	●	Φ20mm , f=50mm	1	China/Imported
	4	Safety circuits	○		1	
	5	Working table	○	Honeycomb /Slat	1	
	6	Guide rail	●	Inner guide	1	Han's Yueming
	7	Control board	●	5#	1	Different control board for different operation
	8	Software	●	Smart Carve	1	Han's Yueming
Auxiliary	9	Socket	●		1	Han's Yueming
	10	Chiller	○		1	
	11	Exhaust fan	○	750W	1	China
	12	Pump	○	135W	1	China
● : Standard    ○ : Optional						
Note : 180W/300W tube is only optional for machine size equal or over 1300*900mm.						

# What's new in the CMH?



## 1. Adjust the height to save the freight (double deck in 40HQ)



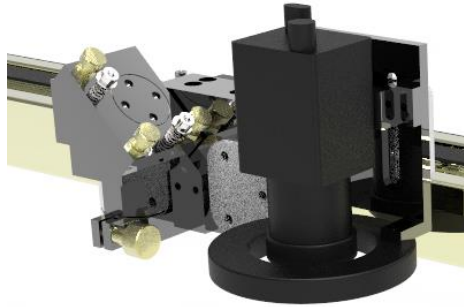
The height of all CMH machine is not higher than 1100mm.

For example:

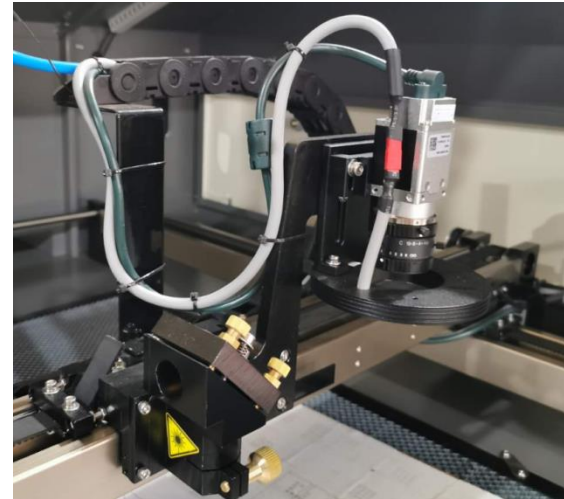
The CMA1309-B-A, we need to remove its feet to put 12 sets into a 40HQ, but not for CMAH1390-B-A --- the same 12 sets machine without removing the feet.

## 2. CCD camera on transmission system

CMH



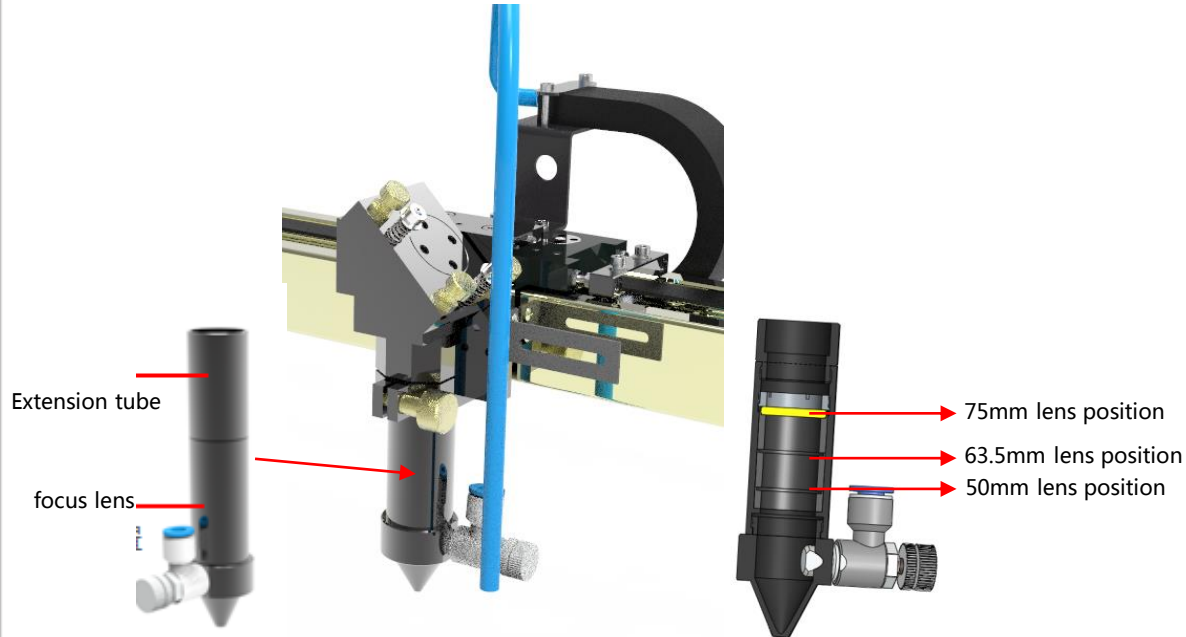
CMA



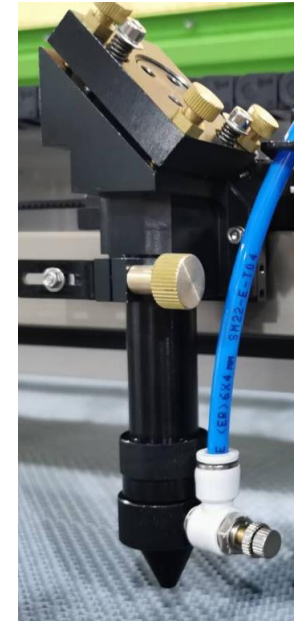
New camera with internet access, reducing the bending of camera wire, lengthen its lifetime.

### 3. Cutting head

CMH



CMA



External diameter of the lens holder is 25mm, with better concentricity.

The lens holder is compatible with all 50.8mm, 63.5mm and 75mm lens. Choose different extension tube when cutting different material.

## 4. Up&down table

CMH



CMA



Lifting system consists of 4 threaded rods+motor+belt, ensuring the stability of the lifting platform.

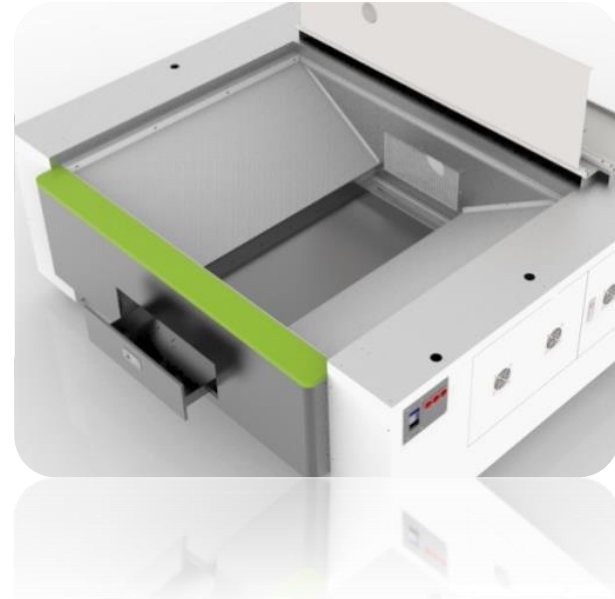
The whole lifting system is an independent module, which can be added to the standard structure of CMH series machine directly.

## 5. Machine cabinet

CMH

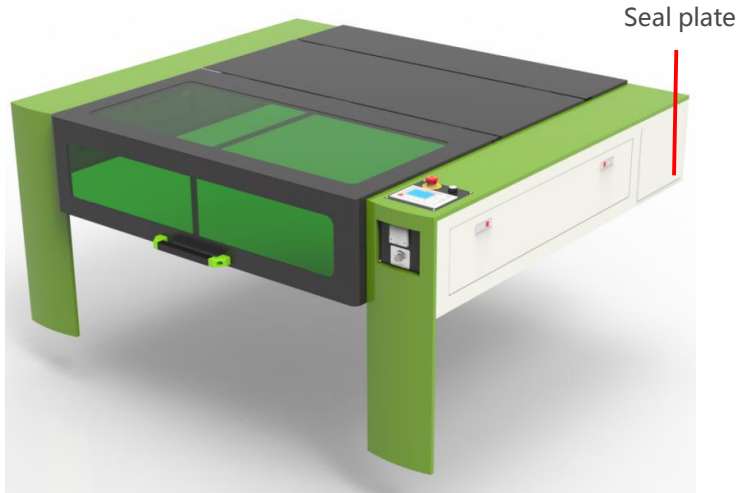


CMA



1. The cabinet of CMH is compatible with both standard working table and the up&down table.
2. The collecting box is formed in one piece sheet to enhance the exhausting performance. So does the sides of machine cabinet, to make sure its intensity and the stability of the transmission system during work.
3. The CMH adds an independent LED switch on the right side of the cabinet.

## 6. Cover



The side cover is now sealed by removable plate in case the customer wants to change higher power laser tube.

CMH



CMA



## 7. Optimization on details

CMH



CMA



To shorten the installation time and decrease the percentage of damage, the fan will be formed on the metal part instead of the metal mesh. And the size of the fan is enlarged from 80\*80mm to 120\*120mm to improve the cooling effect.

## 8. Transmission system

CMH



CMA



Cancel the bearing beam of the guide beam.



## 9. Socket

CMH



CMA



The socket of the CMH machine is moved to the inner side of the machine, to avoid any accident caused by human error on power line.

# THANK YOU!



广东大族粤铭激光集团股份有限公司  
GD HAN'S YUEMING LASER GROUP CO., LTD.