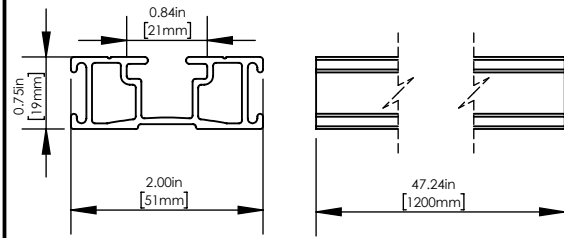
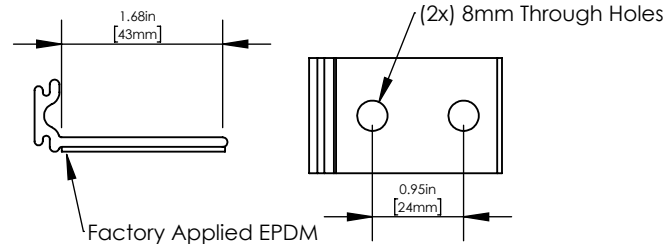


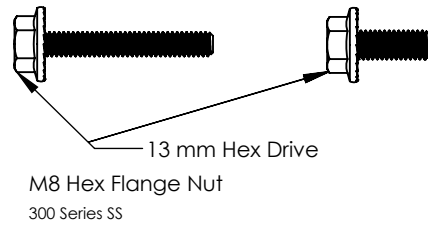
**GRipperFix Rail**  
6000 Series AI



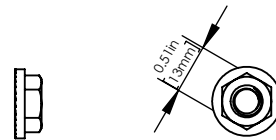
**S-5-Tab EF**  
6000 Series AI



M8-1.25 x 40mm Bolt 300 Series SS  
M8-1.25 x 20mm Bolt 300 Series SS

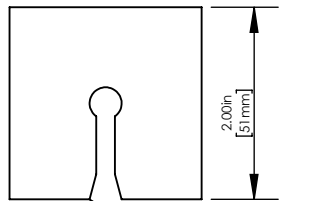


M8 Hex Flange Nut  
300 Series SS

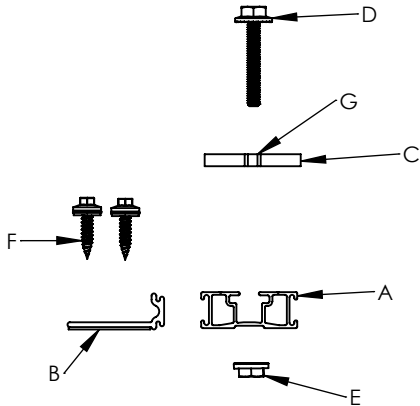


Leveling Pad  
EPDM

1-Inch Piercing Screw  
Stainless or Coated Steel



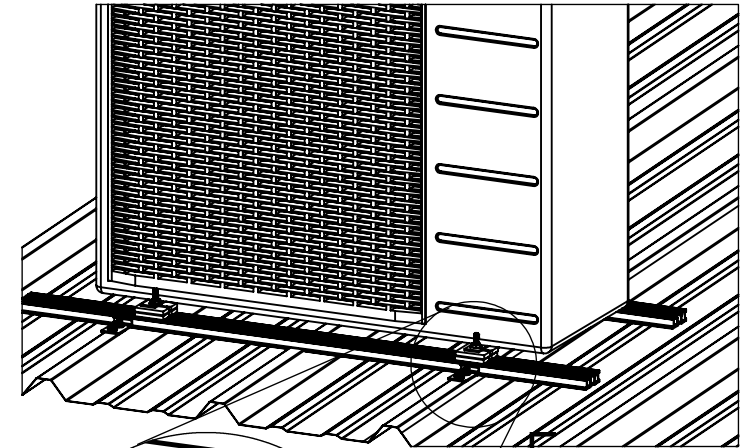
Slotted Keyhole



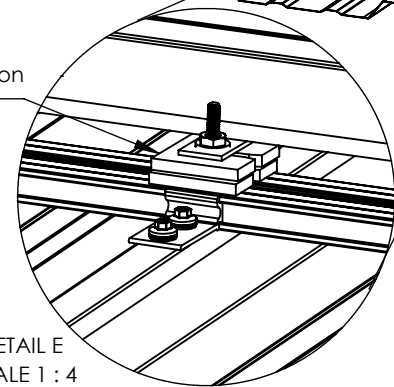
- A. GRipperFix Rail
- B. S-5-Tab EF
- C. Leveling Pad
- D. M8-1.25 x 40 mm Bolt (Can substitute 20mm bolt)
- E. M8 Hex Flange Nut
- F. 1-inch Piercing Screws
- G. Location of attachment of HVAC unit

SCALE 1:4

SCALE 1:12



Using an extra Leveling Pad results in HVAC unit sitting level on a sloped roof



DETAIL E  
SCALE 1 : 4

**FOR STANDING SEAM SPECIFIC MECHANICAL LOAD TEST INFORMATION AND CLAMP INSTALLATION INFORMATION PLEASE VISIT: WWW.S-5.COM**

MATERIAL:				METAL ROOF INNOVATIONS, LTD. 8655 TABLE BUTTE RD COLORADO SPRINGS, CO 80908 719-495-0518 719-495-0045(FAX)	
EST ASSEMBLY WEIGHT:					
SUPPLIED HARDWARE:	TITLE GRipperFix (Exposed Fasten)				
SCALE: 1:2	DRAWING NO.	DRAWN BY Jesse Winternitz	DATE 12/18/2018		
WEIGHTS: Clamp: Setscrew: Bolt:	S-5® PRODUCTS ARE PROTECTED BY MULTIPLE U.S. PATENTS INCLUDING 5,228,248, 5,983,588 AND 6,164,033 (OTHERS ISSUED AND PENDING). EUROPEAN PATENTS ARE ALSO APPLIED FOR AND PENDING UNDER THE PATENT COOPERATION TREATY WITH DIVISIONAL FILING RIGHTS RETAINED. METAL ROOF INNOVATIONS, LTD. (LICENSOR OF S-5!® TECHNOLOGY) AGGRESSIVELY PROSECUTES PATENT INFRINGEMENT.				