

EDGE FALL PROTECTION SYSTEMS

EFPS ADVANTAGES

- ▶ 100% steel system
- ▶ Recyclable system offers additional savings with steel scrap recovery and wood disposals compared to traditional systems
- ▶ Drill free option for ceilings up to 12 ft. and 14 ft. with our additional compression post extension
- ▶ Faster installation than wood and cable rail systems, providing an average installation time of 10' / min (Total cycle time of 400' / 3 hours)
- ▶ High visibility color on site & neat uniform look. Custom colors available
- ▶ 1/2 in. fine steel mesh for additional debris protection, with wind load rates of 110 mph
- ▶ Quick visual inspection made possible with visible red indicator showing incorrect installation



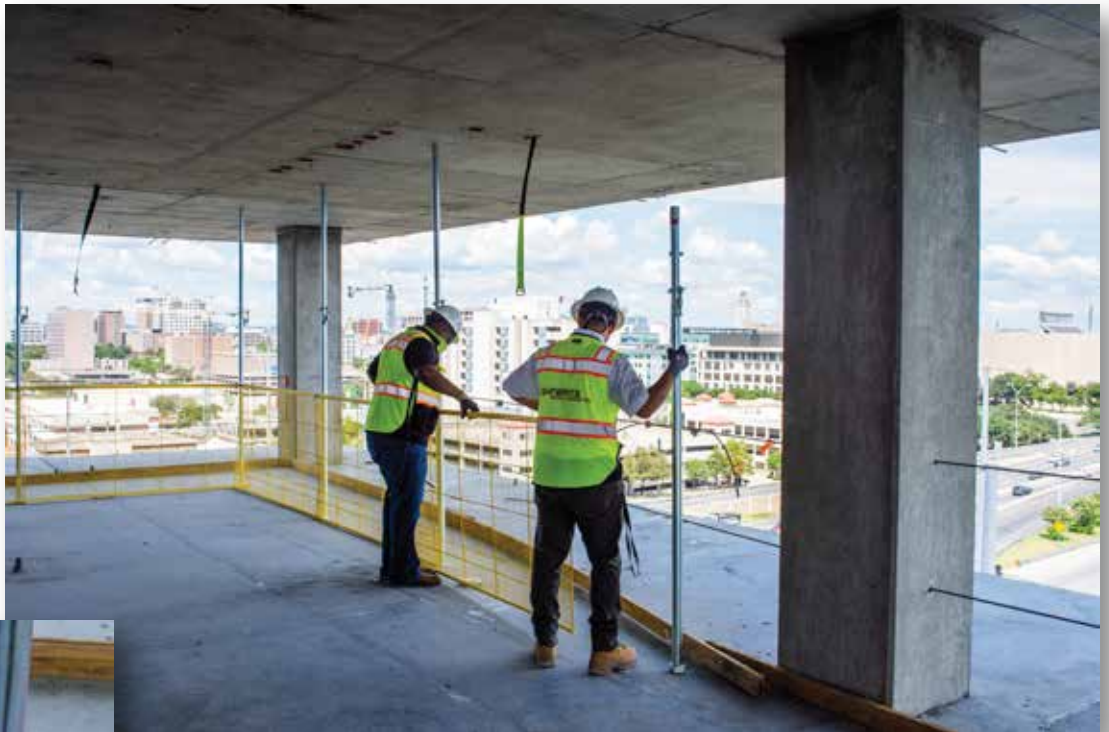
EFPS is Fully Compliant with:

- USA standards: OSHA 1926.502(b) Fall Protection – Guardrail Systems; ANSI/ASSE A10.18-2007
- Safety Requirements for Temporary Roof and Floor Holes, Wall Openings, Stairways and Other Unprotected Edges in Construction and Demolition Operations WISH A/WAC 239-155-24601 Fall Protection Requirements for Construction
- European standards: BS EN 13374:2004 Temporary edge protection systems (class A)
- Canadian standards: Occupational Health and Safety Act of Ontario; Section 26.3

E1797 Rev. 9/14/20

EFPS

EDGE FALL PROTECTION SYSTEMS



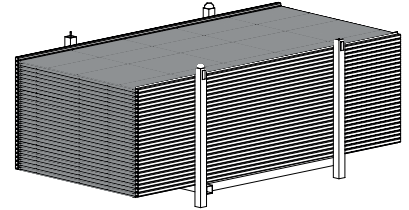
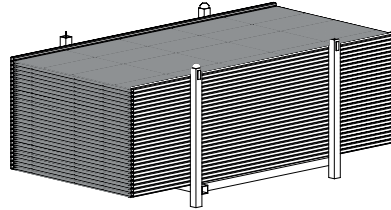
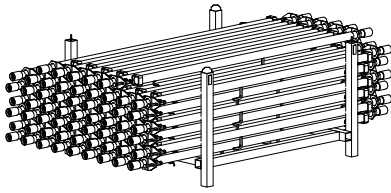
Tie Down's Edge Fall Protection System (EFPS) is a safe and efficient way to protect workers from leading edge fall hazards. EFPS is wind tunnel verified up to 110 mph and meets both OSHA and ANSI requirements.

The EFPS comes with easy-to-use accessories, like a corner return bracket, that make our product the most cost-effective system on the market. Kits are available in 780 linear foot bundles.



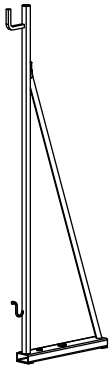
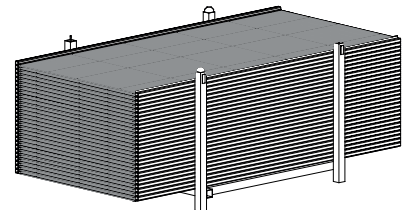
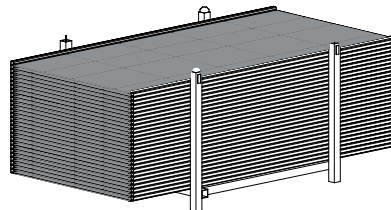
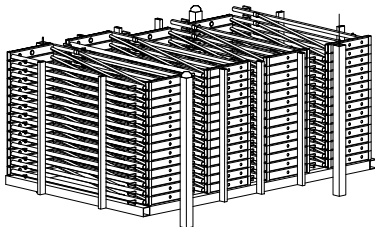
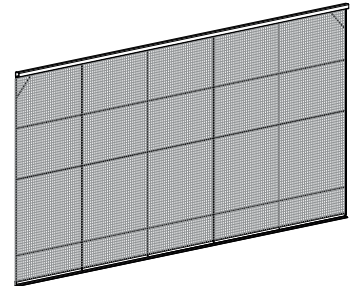
This system offers a double stack feature that meets OSHA 1926, ANSI A10, and CSA standards. This leading edge product includes a go/no go indicator for quick verification of a properly installed perimeter edge system.

EDGE FALL PROTECTION SYSTEMS



EFPS Set with Post Part #14340

Kit includes:
 110 Post with Crate (weight 1,951 lbs.)
 110 Fence with Corner Protectors & Crate
 (2 crates with 55 fences, weight 1,290 lbs. each)



EFPS Set with Floor Bracket Part #14341

Kit includes:
 110 Floor Brackets with Crate (weight 682 lbs.)
 110 Fence with Corner Protectors & Crate
 (2 crates with 55 fences, weight 1,290 lbs. each)

