



# DEHUMIDIFIER

## USER MANUAL

FOR MODEL:  
1PAD8



Before using your dehumidifier, please read this manual carefully and keep it for future reference, along with your receipt.

# IMPORTANT SAFEGUARDS

---

- The appliance is not intended for use by persons (including children) with reduced physical, sensory or mental capabilities, or lack of experience and knowledge, unless they have been given supervision or instruction concerning use of the appliance by a person responsible for their safety.
- Children should be supervised to ensure that they do not play with the appliance.
- FOR EUROPEAN MARKET ONLY: This appliance can be used by children aged from 8 years and above and persons with reduced physical, sensory or mental capabilities or lack of experience and knowledge if they have been given supervision or instruction concerning use of the appliance in a safe way and understand the hazards involved.
- Children shall not play with the appliance.
- Cleaning and user maintenance shall not be made by children without supervision.
- Keep the appliance and its cord out of reach of children aged less than 8 years.
- Disconnect the appliance from its power source during service and when replacing parts.
- Warning: before obtaining access to terminals all supply circuits must be disconnected.
- If the supply cord is damaged, it must be replaced by the manufacturer, its service agent or a similarly qualified person in order to avoid a hazard.
- Disconnect the power supply before cleaning and maintenance.
- The appliance shall not be installed in the laundry.
  
- Do not use this unit for functions other than those described in this instruction manual.
- If the power cord becomes worn or damaged, the cord should only be replaced by a qualified service technician using genuine replacement parts.
- Make sure the plug is plugged firmly and completely into the outlet. It can result in the risk of electric shock or fire.
- Do not plug other appliances into the same outlet, it can result in the risk of electric shock.
- Do not disassemble or modify the appliance or the power cord, it can result in the risk of electric shock or fire. All other services should be referred to a qualified technician.
- Do not place the power cord or appliance near a heater, radiator, or other heat source. It can result in the risk of electric shock or fire.
- This unit is equipped with a cord that has a earthed wire connected to an earthed pin or grounding tab. The plug must be plugged into a socket that is properly installed and earthed. Do not under any circumstances cut or remove the earthed pin or grounding tab from this plug.
- The unit should be used or store in such a way that it is protected from moisture e.g. condensation, splashed water, etc. Unplug unit immediately if this occurs.
- Always transport your appliance in a vertical position and place on a stable, level surface during use. If the unit is transported laying on its side it should be stood up and left unplugged for 6 hours.
- Always use the switch on the control panel to turn the unit or remote control off, and do not start or stop operation by plugging in or unplugging the power cord. It can result in the risk of electric shock.
- Do not press the buttons on the control panel with anything other than your wet or damp fingers.
- Do not use hazardous chemicals to clean or come into contact with the unit. To prevent damage to the surface finish, use only a soft cloth to clean the appliance. Do not use wax, thinner, or a strong detergent. Do not use the unit in the presence of inflammable substance or vapour such as alcohol, insecticides, gasoline, etc.
- Young children should be supervised to ensure that they do not play with, operate or climb on the appliance.
- If the appliance is making unusual sounds or is emitting smoke or an unusual odor, unplug it immediately.
- Do not clean the unit with water. Water can enter the unit and damage the insulation, creating a shock hazard. If water enters the unit, unplug it immediately and contact Customer Service.

## IMPORTANT SAFEGUARDS

---

- Utilize two or more people to lift and install the unit.
- Be sure all accessories are removed from the packing before use.
- To avoid possible injury, avoid contact with the metal parts of the appliance when removing or re-installing the filter. It can result in the risk of personal injury.
- Do not block the air inlet or outlet of the appliance. Reduced air flow will result in poor performance and could damage the unit.
- Always grasp the plug when plugging in or unplugging the appliance. Never unplug by pulling on the cord. It can result in the risk of electrical shock and damage.
- Install the appliance on a sturdy level floor capable of supporting up to 110lbs(50kg). Installation on a weak or unlevel floor can result in the risk of property damage and personal injury.
- Close all doors and windows to the room for most efficient operation.
- GWP: R410A: 2088, R134a: 1430, R290: 3

## IMPORTANT - GROUNDING METHOD

This product is factory equipped with a power supply cord that has a three-pronged grounded plug. It must be plugged into a mating grounding type receptacle in accordance with the National Electrical Code and applicable local codes and ordinances. If the circuit does not have a grounding type receptacle, it is the responsibility and obligation of the customer to exchange the existing receptacle in accordance with the National Electrical Code and applicable local codes and ordinances. The third ground prong should not, under any circumstances, be cut or removed. Never use the cord, the plug or the appliance when they show any sign of damage. Do not use your appliance with an extension cord unless it has been checked and tested by a qualified electrical supplier. Improper connection of the grounding plug can result in risk of fire, electric shock and/or injury to persons associated with the appliance. Check with a qualified service representative if in doubt that the appliance is properly grounded.

## ELECTRICAL CONNECTIONS

Before plugging the appliance into the mains socket, check that:

- The mains power supply corresponds to the value indicated on the rating plate on the back of the appliance.
- The power socket and electrical circuit are adequate for the appliance.
- The mains socket matches the plug. If this is not the case, have the plug replaced.
- The mains socket is adequately earthed. Failure to follow these important safety instructions absolves the manufacturer of all liability.

## IMPORTANT SAFEGUARDS

---

Important information for correct disposal of the product in accordance with EC Directive 2002/96/EC.



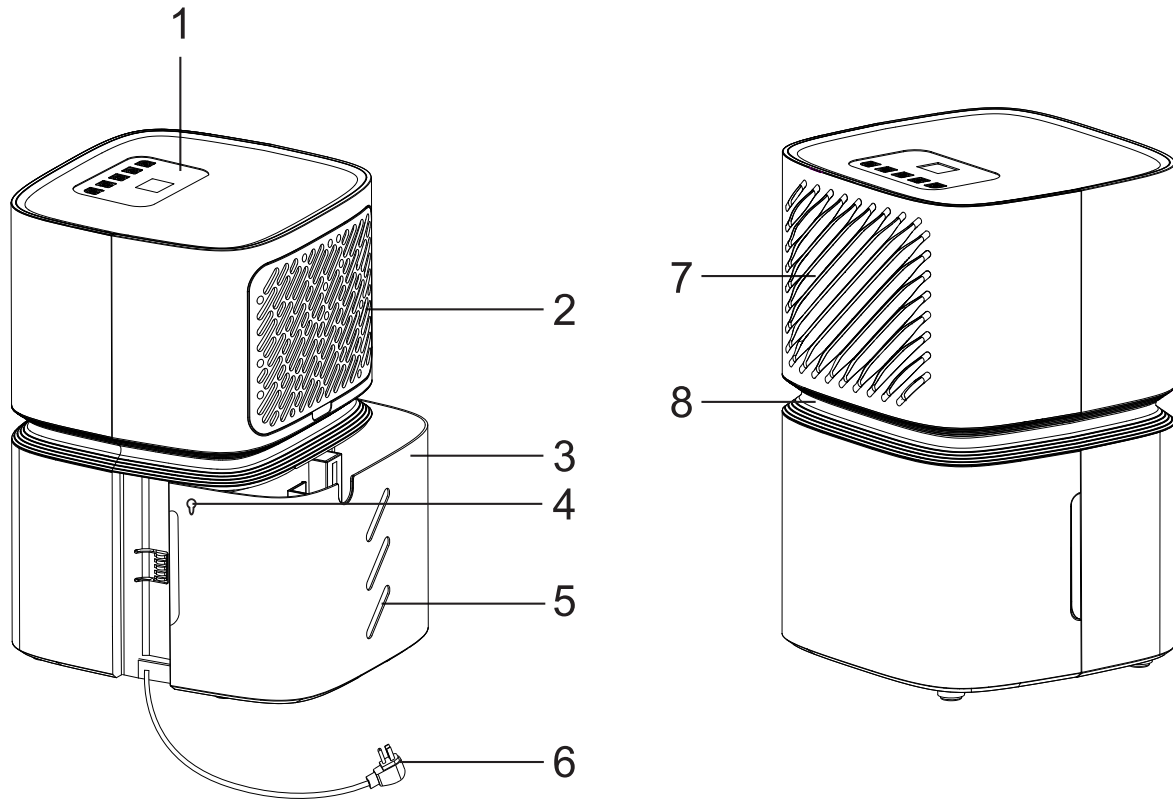
At the end of its working life, the product must not be disposed of as urban waste. It must be taken to a special local authority differentiated waste collection centre or to a dealer providing this service. Disposing of a household appliance separately avoids possible negative consequences for the environment and health deriving from inappropriate disposal and enables the constituent materials to be recovered to obtain significant savings in energy and resources. As a reminder of the need to dispose of household appliances separately, the product is marked with a crossed-out wheeled dustbin.

### SOME NOTIONS ON HUMIDITY

Air always contains a certain amount of water in the form of vapor. This determines the level of humidity in an atmosphere. The capacity of the air to hold water vapor increases with temperature. This is why in homes, as soon as the temperature decreases, the vapor contained in the air condenses, as is evident on the colder surfaces in the room, such as windows, walls etc. The purpose of a dehumidifier is to remove the excess moisture from the air to avoid the damage caused by condensation.

Experts have established that the optimum environmental conditions for our well being and for the home are obtained between 40% and 60% relative humidity. With very low temperatures, you are recommended to heat the room even minimally. This considerably increases the dehumidifying power of the appliance. With heating, the condensation formed by the water vapor on windows and other cold surfaces evaporates into the air to be collected by the dehumidifier. Air leaving the dehumidifier is usually about 33°F-35°F warmer than room temperature.

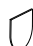

# DESCRIPTION



## DESCRIPTION

- |                  |                            |
|------------------|----------------------------|
| 1. Control Panel | 5. Water level view window |
| 2. Intake grille | 6. Power cord              |
| 3. Bucket        | 7. Air outlet grille       |
| 4. Winding hole  | 8. Handle                  |

## Accessories

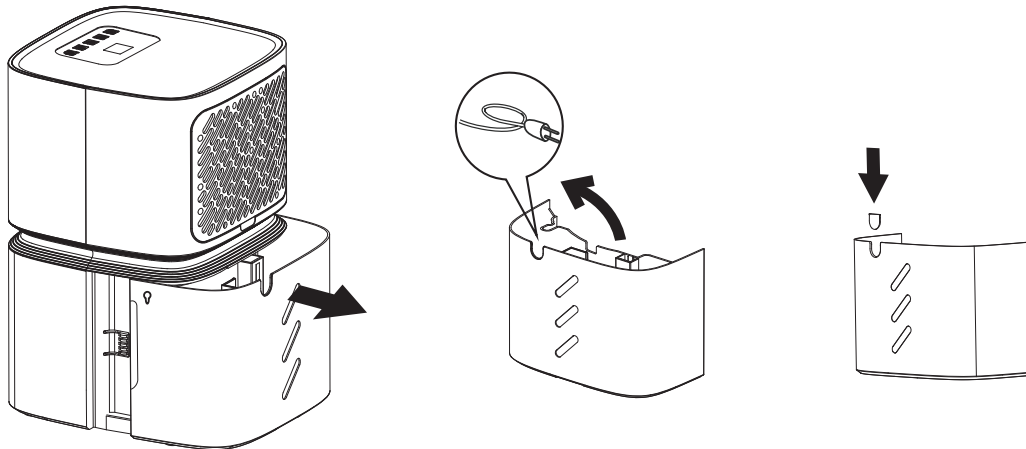
	Chip of bucket
	Drain pipe

Note: All diagrams in this manual are schematic and may differ slightly from actual use.

# INSTALLATION

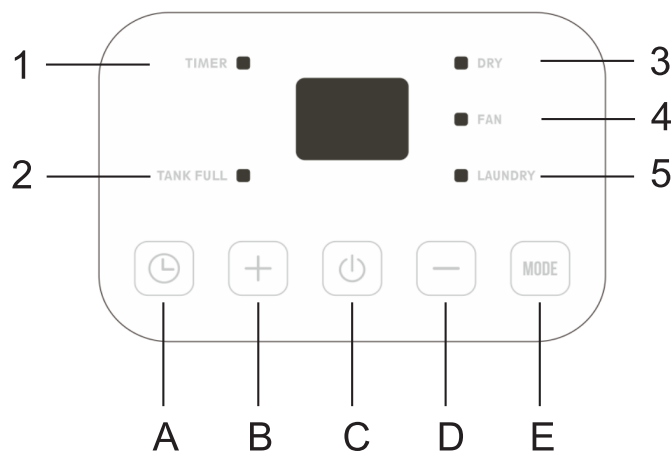
## INSTALLATION

1. Take out the bucket, remove the power cord and accessories from it.
2. Install the drain cover/cap on the bucket.



Note: Be sure unit sits in proper position for 24 hours before use.

## Control Panel



- 1. Timer symbol
- 2. Bucket full symbol

- 3. Dry symbol
- 4. Fan symbol
- 5. Turbo symbol

- A. Timer button
- B. Increase button
- C. On / Off button
- D. Decrease button
- E. Mode button

# INSTRUCTIONS

---

- “ ⏻ ” on / off button  
On / off power supply used to control the startup or shutdown of the appliance.
- Decrease / Increase button  
Press “ + ” / “ - ” to select the indoor humidity level you expect to achieve, or set the time when using "timer" setting.
- Mode selection:  
Press the “ ⏻ ” button to turn on the appliance, and press the “ MODE ” button to browse different modes.

## \* Dehumidify mode

Press the “ MODE ” button until the “ DRY ” symbol is illuminated.

Press the “ + ” or “ - ” to choose the humidity desired, adjustable range is 35% RH-80%RH. The screen will display the setting humidity, and after 5 seconds, turn the display to ambient humidity.

## \* Continuous mode

Under dehumidify mode, Press the “ - ” button until the “ ☐ ” indicator is illuminated, then the unit will continuously run.

## \* Fan mode

When the appliance is running, press the “ MODE ” button until the “ FAN ” symbol is lit, you can startup or shutdown the fan function.

The screen display below:



In this function, the compressor will not run, and the appliance is not dehumidifying.

## \* Turbo mode

Press the “MODE ” button until the “ TURBO ” symbol is lit.

In this mode humidity can not be adjusted, and screen will display ambient humidity.

After running 24 hours, the appliance will quit turbo mode, turn to dehumidifying mode and set humidity 60%RH.

## \* Dehumidifying + FAN mode

Press the “ MODE ” button until the “ DRY ” and “ FAN ” symbols are both lit .

In this mode the humidity can be set like dehumidifying mode, and when the ambient humidity is lower than the setting, the fan will running continuous.

# INSTRUCTIONS

---

- **Timer button**

This timer can be used to delay the appliance startup or shutdown, this avoids wasting electricity by optimising operating periods.

### Programming start up

- Turn on the appliance, choose the mode you want, for example Dehumidify mode. Turn off the appliance.
- Press the “⌚” button , the “⌚” symbol starts to flash, press the “+” / “-” to adjust the set time from 0.5-24 hours.
- In 5 seconds without an operation, set the timer start function, it will display “⌚”.
- Press the “⌚” button again to cancel the Timer, and the “⌚” symbol disappear.

### Programming shut down

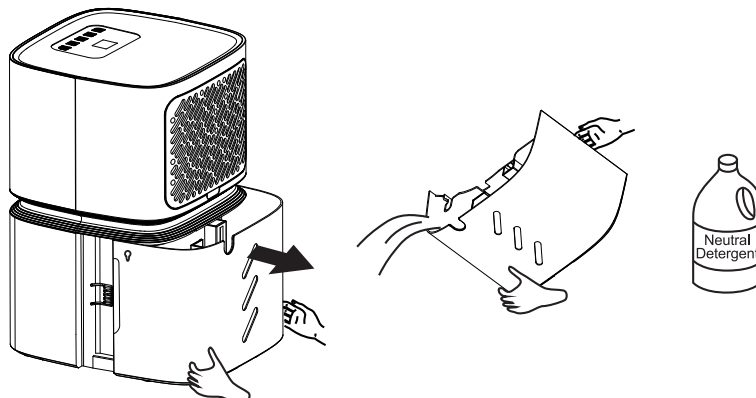
- When the appliance is running, press the “⌚” button. When the “⌚” symbol starts to flash, press the “+” / “-” to adjust the set time between 0.5-24 hours.
- Within 5 seconds without operation, press the "timer" start function, it will display the “⌚” symbol.
- Press the “⌚” button again to cancel the Timer, and the “⌚” symbol will disappear.

### \* Bucket full indicator

When bucket is full, the compressor and fan will shut off, “TANK FULL” symbol will flash. In 3 minutes it will make a beeping noise, and after another 6 minutes make a beeping noise again.

The appliance will not run until the bucket is emptied and properly placed back inside the unit.

The bucket should be cleaned every week to prevent the growth of mold, mildew and bacteria. Use mild detergent. Once cleaned, completely dry the bucket and place it back inside unit.





# MAINTENANCE

Note: Hold the bucket with both hands when emptying, then put it back in appliance. Note: When the bucket is full or removed from the unit, the compressor will shut off, the unit will not be removing moisture from the air at this time.

Note: During operation, it is normal for the unit to exhaust warm air from the front of the unit.

Caution: Do not place the bucket on the floor when it is full as it may spill.

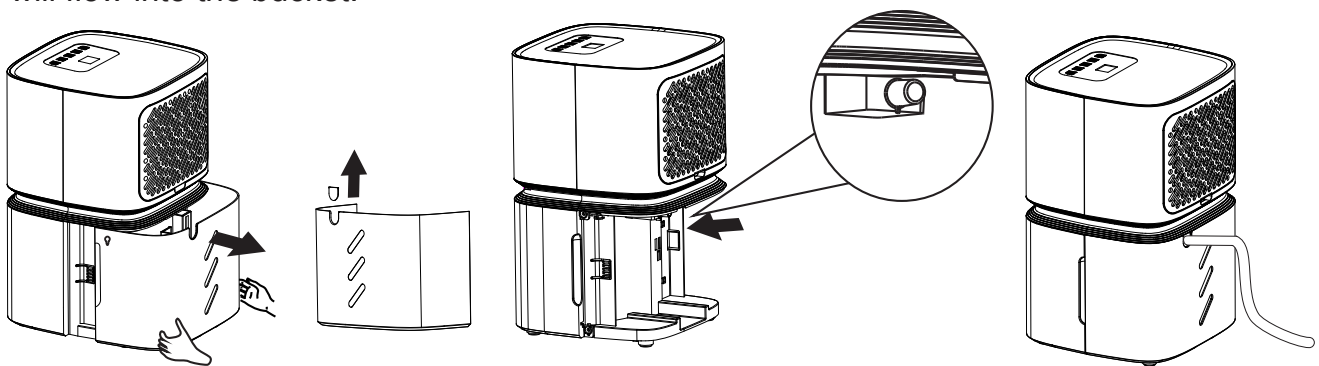
## \* Continuous drain

Connect the drain pipe on the hole of unit, then the unit can continuous run without clean the bucket.

- 1) Put the unit on level floor, take out the bucket, remove the chip of bucket;
- 2) Install the pipe on drain nozzle which can be found inside of the unit ;
- 3) Place bucket correctly and assure the drain tube is not pinched or blocked.
- 4) Press “ ⏻ ” button to operate the unit.

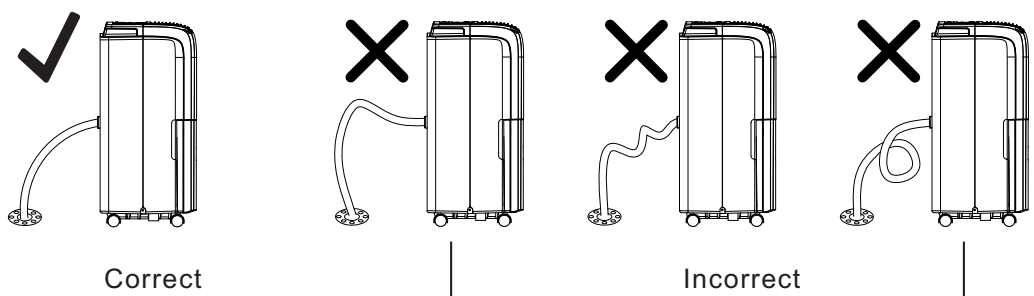
Note: If no need the function of continuous drain, please remove the drain pipe and put back the bucket in unit correctly, then the water will flow into bucket.

\* If the continuous mode will be used, it is best to use the drain tube, otherwise water will flow into the bucket.



Note: Please install the drain pipe as shown in the below picture.

Please install the drain pipe correctly, or the water cannot drain from the pipe.



## FREQUENTLY ASKED QUESTIONS

Notice: If the unit placed on an unlevel ground or the drain tube is not correctly installed, the water will fill the bucket and stop the unit. If that happens, please check if the ground is flat, and the drain tube is correctly installed. NOTE: Bucket should also be placed correctly.

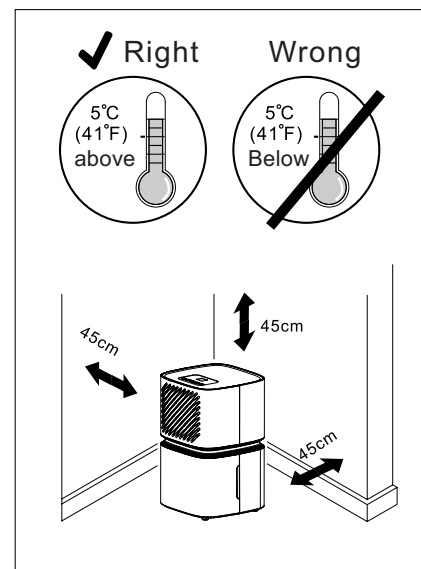
### AUTOMATIC DEFROST

When frost builds up on the evaporator coils, the compressor will cycle off and the fan will continue to run until the frost disappears. When the coils are completely defrosted, the compressor or fan (depending on the model) will automatically restart and dehumidification will resume.


### Location requirements:

The unit operating in a basement will have little no effect in drying out an adjacent enclosed storage area, such as a closet, unless there is adequate circulation of air in and out of the area.

1. Do not use outdoors.
2. This appliance is intended for indoor use only. Place the appliance on a smooth, flat floor surface that is strong enough to support the unit with a full bucket of water.
3. Allow at least 18 inches of air flow on all sides.
4. Place the appliance in an area where the temperature will not drop below 41°F.
5. Use the dehumidifier in cooking, laundry, bathing and dishwashing areas that have excessive moisture. NOTE: Place the dehumidifier away from a clothes dryer.
6. Use the dehumidifier in a basement to help prevent moisture damage.
7. The dehumidifier must be operated in an enclosed area to be most effective.
8. Close all doors, windows and other outside openings to the room.



### CLEAN AND MAINTENANCE

Before cleaning or maintenance, turn the appliance off by pressing the  button on the control panel, wait a few minutes then unplug from the wall.

### CLEANING THE CABINET

You should clean the appliance with a slightly damp cloth and dry with a clean, dry towel.

NOTE: The following may cause risk of electric shock, personal injury, and damage to the unit

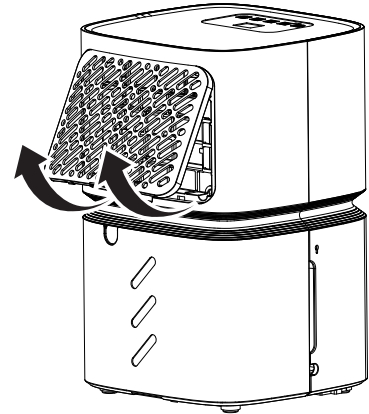
- Never wash the appliance with water.
- Never use petrol, alcohol or solvents to clean the appliance.
- Never spray insecticide liquids or similar.

## FREQUENTLY ASKED QUESTIONS

---

To keep your appliance working efficiently. You should clean the filter every week of operation.

The filter can be taken out as shown in fig. A. Use a vacuum cleaner to remove dust accumulations on the filter. If it is very dirty, immerse filter in warm water and rinse. The water should never be hotter than 104°F. After washing, leave the filter to dry and attach the intake grille to the appliance.



### END OF SEASON OPERATIONS


To unplug from the mains socket, empty the bucket. Clean the filter and dry thoroughly before putting back. Cover the appliance to prevent from dust. Store the appliance upright in a dry location.

### START OF SEASON CHECKS

Make sure the power cable and plug are undamaged.  
Follow the installation instructions precisely.  
Assure filter is intact and clean.  
Assure unit is free of debris.

# TROUBLESHOOTING

Occasionally, you may encounter some problems that are of a minor nature and a service call may not be necessary. Use this troubleshooting guide to identify possible problems you may be experiencing

PROBLEM	POSSIBLE CAUSES	SOLUTIONS
Dehumidifier Does Not Start	The dehumidifier is unplugged.	Make sure the dehumidifier's plug is pushed completely into the outlet.
	The fuse is blown/circuit breaker is tripped.	Check the house fuse/circuit breaker box and replace fuse or reset breaker.
	Dehumidifier has reached its present level or the bucket is full.	The dehumidifier automatically turns off when either condition occurs. Change to a lower setting or empty the water bucket and replace properly.
	Bucket is not in the proper position.	The bucket must be in place and securely seated for the dehumidifier to operate.
	Power Failure.	There is a protective time delay (up to 3 min.) to prevent tripping of the compressor overload. For this reason, the unit may not start normal dehumidification for 3 min. after it is powered back on.
Dehumidifier does not dry the air as it should	Not enough time allowed for unit to remove moisture.	When first installed, allow at least 24 hours to maintain the desired dryness.
	Airflow is restricted.	Make sure there are no curtains, blinds, or furniture blocking the front or back of the dehumidifier. See the CHOOSING A LOCATION section.
	Dirty filter.	See the CLEAN FILTER section.
	The Humidity Control may not be set low enough.	For drier air, press the “ - ” button to lower the percent humidity desired in the room, or set the dehumidifier to  for maximum dehumidification.
	Doors and windows may not be closed tightly.	Check that all doors, windows, and other openings are securely closed.
	Clothes dryer may be blowing moist air into the room.	Install the dehumidifier away from the dryer. The dryer should be vented outside.
	Room temperature is too low.	Moisture removal is best at higher room temperatures. Lower room temperatures will reduce the moisture removal rate. This model is designed to operate at temperatures above 41°F.

# TECHNICAL PARAMETERS

PROBLEM	POSSIBLE CAUSES	SOLUTION
Appliance runs too long	The area is too large	The capacity of the appliance can not meet the area of the room
	Doors and windows are open	Close the door and window
Frost appears on heat-exchanger	Appliance run recently or the room temperature is too low	It is normal, frost usually disappear in 60 min
Fan noise	The air is passing through the appliance	This is normal
Water on the floor	The drain connection may be aging	Check the drain connection if the appliance is at level
	The drain pipe is connected, but the water is not draining	If using the water tank, remove the drain pipe and put back the drain cover; or install the drain pipe correctly

If the following error code appears, contact the after-sales service department for inspection and repair.

CODE	DESCRIPTION
EH	Humidity sensor failure
E1	Temperature sensor failure
E2	

Operation temperature range: 41°F~90°F(5°C~32°C)

Operation humidity range: 30%RH~90%RH

**Distributed by:**



Perfect Aire, LLC  
5401 Dansher Rd.  
Countryside, IL 60525

**844-4PA-AIRE | 844-472-2473**  
**[www.perfectaire.us](http://www.perfectaire.us)**

PA/User\_1PAD8/02212020

Specification and performance data is subject to change without notice.

Printed in China