

5. Specifications

5.4 Humidifier

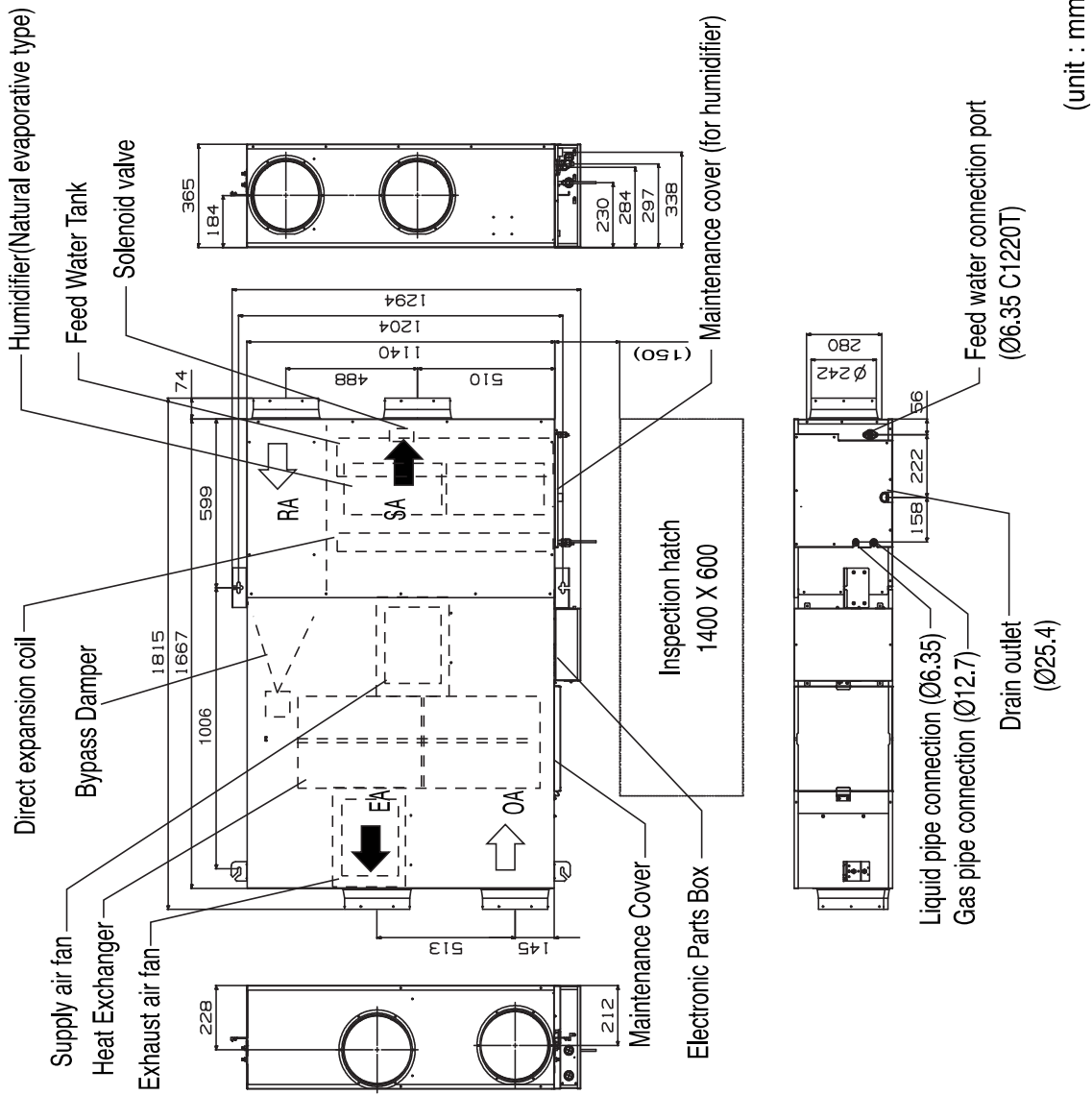
	LZ-H050GXH4	LZ-H080GXH4	LZ-H100GXH4
Humidifier type	Natural evaporating type humidifier		
Wetted element	Porosity plate 120pcs. (60 x 2pcs.)	Porosity plate 120pcs. (60 x 2pcs.)	Porosity plate 120pcs. (60 x 2pcs.)
Supply water pressure(kg/cm ²)	0.2(Min.) ~ 5.0(Max.)		

Note:

1. Feed clean water (city water, tap water or equivalent) Dirty water may clog the valve or cause dirt deposits in the water container, resulting in poor humidifier performance.
(Never use any cooling tower water and heating - purpose water.)
Also, if the supply water is hard water, use a water softener because of short life.
Life of humidifying element is about 3 years (4,000 hours), under the supply water conditions of hardness: 150 mg/l. (Life of humidifying element is about 1 year (1,500 hours) under the supply water conditions of hardness: 400 mg/l.)
Annual operating hours: 10 hours / day x 26 days / month x 5 month = 1,300 hours
2. Maintain the supply water temperature at 5 ~ 50°C and its pressure at 20 ~ 490 kPa (0.2 ~ 5.0 kg/cm²). If the water pressure is above 490 kPa (5.0 kg/cm²), add pressure reducing valve in between the kit and the supply water shut - off valve.
3. The supply water line cannot be directly connected with a utility water tap.
To unavoidably take water from such line, employ a CISTERN (gotten configuration authorization).
4. Be sure to provide thermal insulation around the indoor piping as well as the shut - off valves.
5. In order to prevent harmful bacteria from generating, do maintenance on humidifying unit portion at the beginning and the end of the heating season according to the installation manual.

6. Dimensions

LZ-H050GXH4
LZ-H080GXH4
LZ-H100GXH4



(unit : mm)

76, Seongsan-dong, Changwon City, Gyeongnam,
641-713, Korea

