

KNIT--MATIC

Easy Mobius Cowl

Pattern by Haley Waxberg

Size

S (M, L): tighter (average, looser)

Gauge

12 sts & 20 r = 4"/10cm in knit 4 rows, purl 4 rows rib.

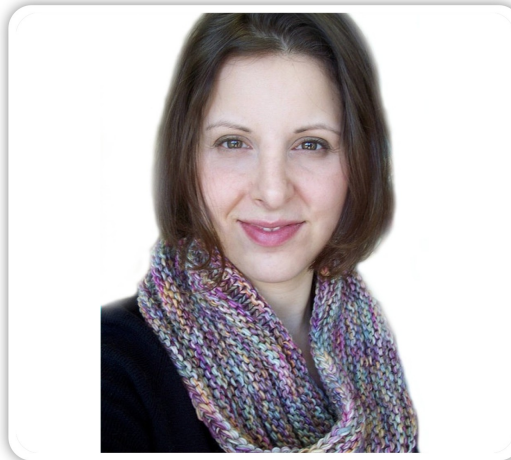
Materials

° 2 skeins Manos Silky Wool, colour 3113 (50g, 135m/150yds; 30% silk, 70% extra fine merino wool) (work holding 2 strands together)
OR 1 skein Malabrigo Mecha, colour 875 Arapey (100g/120m (130yds)

- ° 8mm/36" circular needles
- ° 1 Jumbo Stitch Marker

Notes

This pattern is very simple, fast, and satisfying for times when you just need to produce something FAST. It is knit in the round using a really long circular needle and a cast on just for mobius knitting: [Intro to Mobius Knitting](#) tutorial on you tube. Cat's instructions are clear and easy to follow and you'll be an expert in no time!



Directions

Our original version of this cowl was made with 2 strands of Manos Silky Wool, a Double Knitting weight yarn, holding 2 strands together (size Large). The later version was made with Malabrigo Mecha and only used a single strand (size Small) and working 3 rounds instead of 4. *Note: Round begins & ends at the stitch marker.*

Using Cat Bordhi's Mobius Cast On technique (<http://www.youtube.com/watch?v=LVnTda7F2V4>), cast on 60 (70, 80) stitches. Place marker and join careful not to twist the sts (more than it is meant to): see video tutorial for directions.

Knit the 1st stitch tight to avoid a gap at the join. Knit for 4 rounds (or ridges).

Purl for 4 rounds. Knit 4 rounds.

Purl 4 rounds. Knit 4 rounds.

Purl 4 rounds.

Cast off knit-wise. Weave in ends.

