

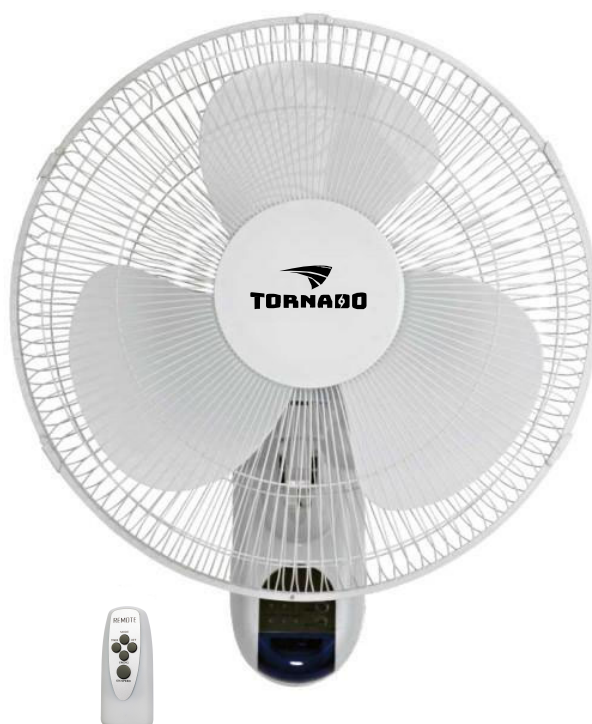
INSTRUCTION MANUAL



TORNADO

16" DIGITAL REMOTE WALL FAN

Models: HI-FAN-W16DIGIT-1P
HI-FAN-W16DIGIT-2P



PLEASE READ AND SAVE THIS INSTRUCTION.

Attention: Pictures in the IM are for reference only.

READ AND FOLLOW ALL INSTRUCTION BEFORE OPERATING FAN

CAUTION

Read rules for safe operation and instructions carefully.

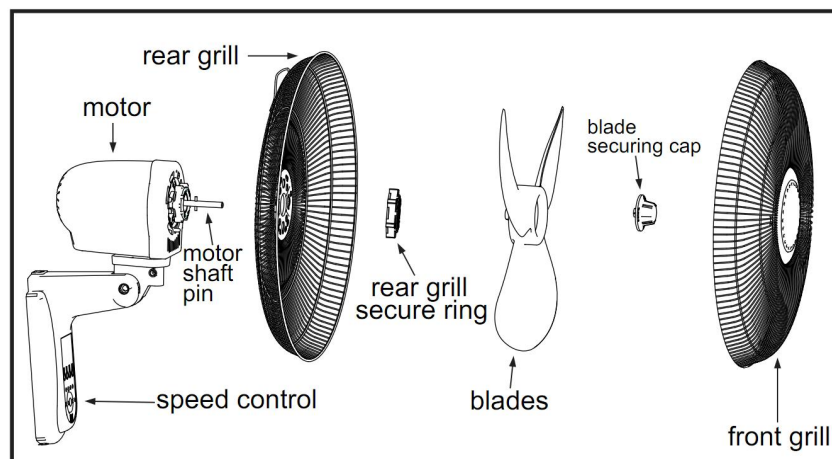
WARNING

1. This appliance has a polarized plug (one blade is wider than the other). To reduce the risk of electric shock, this plug is intended to fit in a polarized outlet only one way. If plug does not fit fully in the outlet, reverse the plug. If it still does not fit, contact a qualified electrician. Do not attempt to defeat this safety feature.
2. To reduce the risk of fire or electric shock, DO NOT use this fan with any solid-state speed control device.
3. To reduce the risk of injury to persons, install fan at least 2.1m (7 feet) above the floor.

RULES FOR SAFE OPERATION

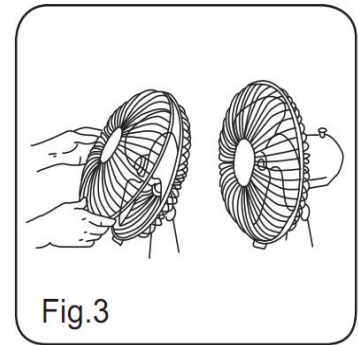
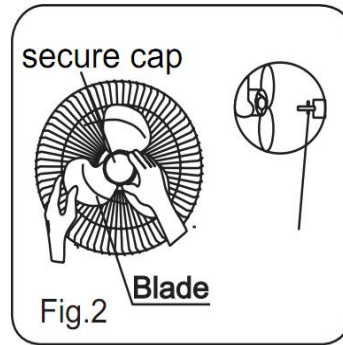
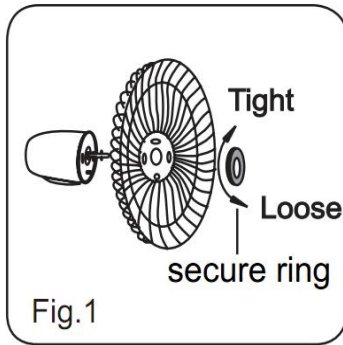
1. Never insert fingers, pencils, or any other object through the guard when fan is running.
2. Disconnect the fan when moving from one location to another.
3. Disconnect the fan when removing grills for cleaning.
4. Be sure fan is on a stable surface when operating to avoid overturning.
5. DO NOT use fan in window. Rain may create electrical hazard.
6. Ensure that the fan is switched off from the supply mains before removing the grille.
7. Do not operate any fan with a damaged cord or plug. Discard fan or return to an authorized service facility for examination and/or repair.
8. Do not run cord under carpeting. Do not cover cord with throw rugs, runners, or similar coverings. Do not route cord under furniture or appliances. Arrange cord away from traffic area and where it will not be tripped over.
9. This product employs overload protection (fuse). A blown fuse indicates an overload or short-circuitsituation. If the fuse blows, unplug the product from the outlet. Replace the fuse as per the user servicing instructions (follow product marking for proper fuse rating) and check the product. If the replacement fuse blows, a short-circuit may be present and the product should be discarded or returned to an authorized service facility for examination and/or repair.

PART FIGURE



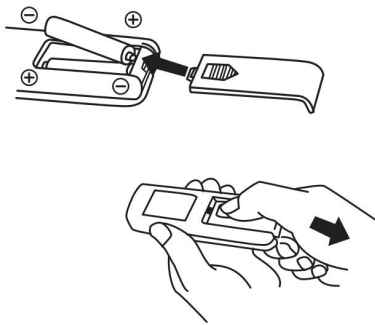
ASSEMBLY COMPONENTS

1. Unscrew the secure ring clockwise from the fan motor. Fix the rear grill to the motor then tighten the secure ring again (see fig.1);
2. Insert the blades into the motor shaft pin, and turn the fan blade securing cap counterclockwise to tighten the blade (see fig.2).
3. Fix the front grill and the rear grill with circlip clip and then use the fasten clip to tighten the fan grill (see fig.3).



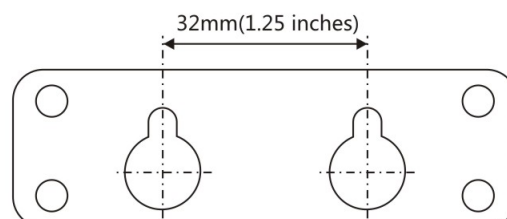
BATTERY WARNING

1. Do not dispose of batteries in fire, batteries may explode or leak;
2. Do not mix old and new batteries;
3. Do not mix alkaline, standard(carbon-zinc) or rechargeable (nickel-cadmium) batteries.



MOUNTING ON THE WALL

1. Drill two holes in the wall according to the standard size on the paper.
The centers of the two holes are 32mm (1.25 inches) apart.
2. Put the rubber plugs in the holes, then drill the screws on the rubber plugs.
3. Hang the fan upward onto the wall and make sure the screws on the wall are aligned to the bracket of fan.



We are happy to help, contact us : info@tornadofans.com

TIMER

Press the Timer button repeatedly to change the timer setting. The time increases by every 0.5h and maximum timer setting is 7.5h.

ON/SPEED

Press the ON button on the remote. The fan will start to operate at a low speed if it is the first time you have plugged it in. If the fan was plugged in before, it will operate at the speed as last turned off.

After starting the fan, this ON button is for setting the speed. Press this button repeatedly to switch the speed from "LO-ME-HI" .

OSCILLATION

Press the SWING button on the remote to control the oscillation of the fan. Press the button again when the fan head turns to your desired angle and the fan will stop oscillating.

OFF

Press the OFF button to turn the fan off.

FUNCTION MODES

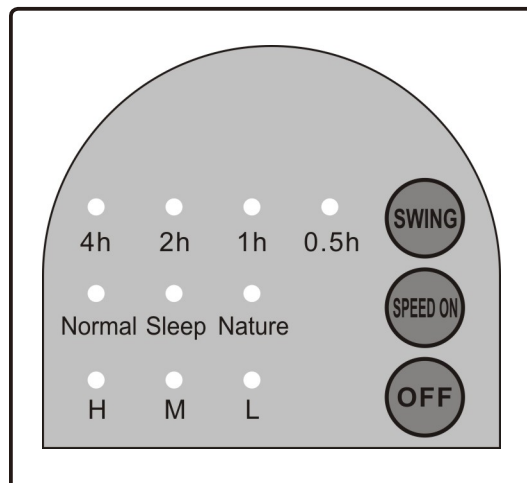
This fan has three different modes: NORMAL, SLEEP and NATURAL BREEZE. Each mode functions differently.

NORMAL WIND-The fan will deliver constant airflow on high, medium or low speed settings.

SLEEP WIND-The fan will reduce airflow step by step until the fan shuts off.

NATURAL WIND-The fan delivers airflow consistent with natural wind. The airflow cycles from high speed to low speed, repeating the cycle to create a natural breeze in the environment.

OFF-The fan will completely turn off.



USER SERVICING INSTRUCTIONS

1. Grasp plug and remove from the receptacle or other outlet device. Do not unplug by pulling on cord
2. Open fuse cover. Slide open fuse access cover on top of attachment plug towards blades. (see fig.1)
3. Remove fuse carefully. Remove the fuse by prying it out carefully. (see fig.2)
4. Risk of fire. Replace fuse only with 2.5 Amp, 125 Volt fuse.
5. Close fuse cover. Slide closed the fuse access cover on top of attachment plug. (see fig.3).
6. Risk of fire. Do not replace attachment plug. Contains a safety device (fuse) that should not be removed. Discard product if the attachment plug is damaged.



Fig.1



Fig.2

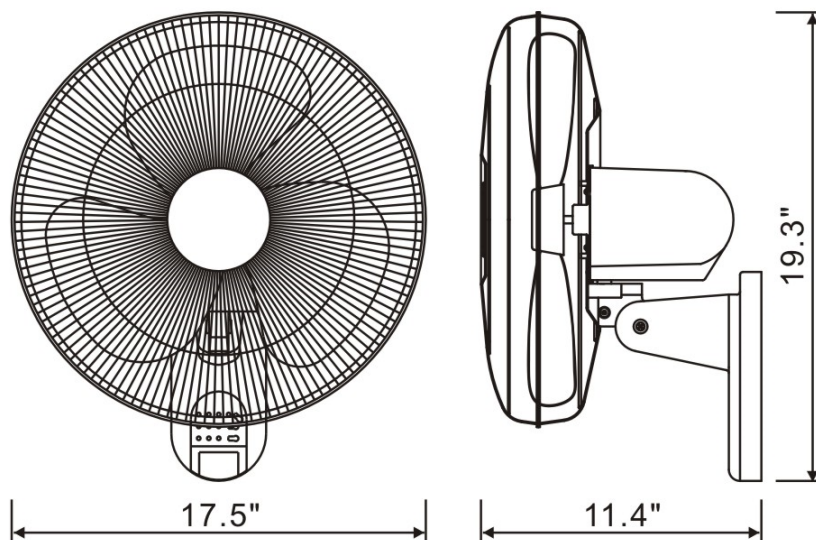


Fig.3

Tips: Do not overexert when replacing the fuse or damage may occur. If it's hard to close the access cover, make sure the fuse is fully inserted.

CLEANING:

1. Be sure to unplug from the electrical supply source before cleaning.
2. Plastic parts should be cleaned with mild soap and damp cloth or sponge. Thoroughly remove soap film with clean water.
3. Be sure not to get water or other liquid into the motor.



LIMITED ONE-YEAR WARRANTY

Hexago LLC warrants this product to be free of defects in material and workmanship for the applications specified in the Owner's Manual for a period of 12 months for the whole fan from date of purchase. This warranty only applies to the original purchaser of this product.

This warranty excludes damage, accidental or otherwise, to the unit not caused by a defect in material or workmanship.


The warranty also excludes damage caused by misuse, tampering, modification, missassembly, repairs or alternations, or failure to adequately maintain and care for the unit. Operating this product under any conditions others than those recommended or at voltages other than indicated will also void this warranty. For warranty issues, contact the place of purchase for repair/ replacement opportunities. The original dated receipt or proof of purchase must accompany all returns.

All warranties, expressed or implied, are limited for 12 months for the whole fan from the date of purchase. Please contact us at www.tornadofans.com if you have any questions. Tornado is a registered trademark of Hexago LLC.

Some states do not allow for the limitation or exclusion of incidental or consequential damages, or do not allow limitation on implied warranties. The above limitations and exclusions may not apply to you. This warranty gives you specific legal rights, and may also include other rights that vary state by state.

Customer service email: info@tornadofans.com

Website: www.tornadofans.com

FOR CALIFORNIA CONSUMERS  **WARNING:** This product can expose you to chemicals including lead and phthalates, which are known to the State of California to cause cancer and birth defects or other reproductive harm. For more information go to www.P65Warnings.ca.gov.

202112