



Owner's Manual and Assembly Instructions for Models :

- KL1000
- KL1001
- KL2000
- KL2001
- KL1501
- KL2501

IMPORTANT!

Before installing and using Kayak Landing, read and understand this Owner's Manual. Save these instructions.

This Owner's Manual contains important safety instructions.

GSA DORSETT, LLC CANNOT BE HELD RESPONSIBLE FOR DAMAGES OR INJURY SUFFERED AS THE RESULT OF FAILURE TO FOLLOW OWNER'S MANUAL.



WARNING

IMPROPER USE CAN LEAD TO SERIOUS INJURY OR DEATH. ALWAYS FOLLOW INSTRUCTIONS CAREFULLY.

- 1. KAYAK LANDING IS FOR LAUNCHING AND DOCKING KAYAKS AND CANOES ONLY. KAYAK LANDING IS NOT INTENDED FOR ANY OTHER USE.**
- 2. DO NOT DOCK MOTORIZED WATERCRAFT ON KAYAK LANDING.**
- 3. MAX LOAD CAPACITY IS 300 POUNDS.**
- 4. KL1001/KL2001 ARE FOR KAYAKS AND CANOES WITH A MAXIMUM WIDTH OF 31 INCHES.**
- 5. DO NOT STAND DIRECTLY ON KAYAK LANDING. WHEN ENTERING OR EXITING KAYAK OR CANOE, STEP DIRECTLY FROM DOCK INTO KAYAK OR CANOE.**
- 6. DO NOT DIVE OR JUMP OFF KAYAK LANDING INTO THE WATER.**
- 7. DO NOT SWIM UNDER KAYAK LANDING.**
- 8. REMAIN SEATED WHILE DOCKING OR LAUNCHING KAYAK OR CANOE.**

Contents:

- Parts list
- Assembly Instructions
- Installation Instructions
- Proper Use and Adjustments
- How to use your Kayak Landing
- Tips for Tandem Kayaks

GSA Dorsett LLC dba Kayak Landing

PO Box 45305, Madison, WI 53744
608-616-5705

kayaklanding@gmail.com

Limited Warranty

Kayak Landing is warranted against defects in material and manufacturing workmanship for a period of one (1) year from the date of purchase.

This Limited Warranty specifically does not cover damage to Kayak Landing caused by: Improper assembly and/or installation, use inconsistent with Kayak Landing's instructions and product specifications, vandalism, severe weather and natural disaster, impact by watercraft, ice, falling trees, floating debris and other foreign objects, animals or aquatic life, unauthorized product modification and attachment, and improper repair.

If Kayak Landing fails under normal use and within the applicable warranty period, Buyer must submit a written claim to Kayak Landing at P.O. Box 45305, Madison, WI 53744 USA. Claims must identify the failed product(s), describe the claimed defect(s) and include copies of dated proofs of purchase/receipts.

Upon receiving sufficient proof of covered product failure, Kayak Landing will, in its sole discretion, either repair or replace failed products within a reasonable time after notice, and ship, at Buyer's expense, repaired and/or replacement products to Buyer. "Repair" may be limited to providing a repair kit to Buyer. Costs related to the removal of failed products, and the installation of repaired and/or replaced products shall be at Buyer's expense.

Warranty period begins on the date of product purchase. Repaired and replacement products are warranted only for the balance of the original limited warranty period. The limited warranty extends only to the original Buyer of Kayak Landing ("Original Buyer"). Warranty is not transferable to anyone who subsequently purchases product from the Original Buyer, or to any subsequent purchaser.

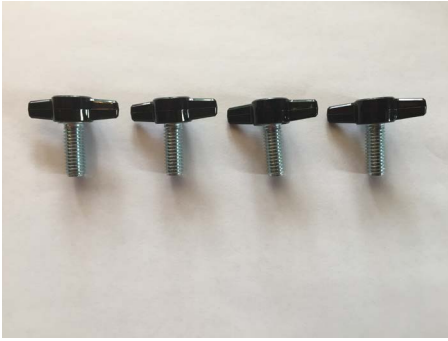
To ensure proper warranty coverage, Buyer should activate the Limited Warranty by properly registering the purchase of Kayak Landing within thirty (30) days of the date of purchase via registering by going to website and clicking "Product Registration".

Buyer, by acceptance and use of this limited warranty, waives any rights it would otherwise have to claim or assert that the limited warranty fails of its essential purpose. Buyer agrees that venue for any court action to enforce this limited warranty shall be in Dane County in the State of Wisconsin.

LIMITATION OF LIABILITY; DISCLAIMER OF WARRANTIES

THE FOREGOING LIMITED WARRANTY IS THE SOLE AND EXCLUSIVE WARRANTY FOR SELLER'S PRODUCT AND IS IN LIEU OF ALL OTHER WARRANTIES, EXPRESS OR IMPLIED, IN LAW OR IN FACT. TO THE EXTENT ALLOWED BY LAW, SELLER SPECIFICALLY DISCLAIMS ALL OTHER WARRANTIES, EXPRESS OR IMPLIED, INCLUDING WITHOUT LIMITATION, ALL IMPLIED WARRANTIES OF MERCHANTABILITY AND FITNESS FOR A PARTICULAR PURPOSE, AND ANY IMPLIED WARRANTIES ARISING OUT OF COURSE OF DEALING OR PERFORMANCE OR TRADE USAGE. SELLER SHALL NOT BE LIABLE FOR ANY INCIDENTAL, CONSEQUENTIAL, EXEMPLARY, SPECIAL OR PUNITIVE DAMAGES, OR ANY LOSS OF REVENUE, PROFIT OR USE, ARISING OUT OF A BREACH OF THIS WARRANTY OR IN CONNECTION WITH THE SALE, INSTALLATION, MAINTENANCE, USE, OPERATION OR REPAIR OF THE PRODUCT. SELLER SHALL NOT BE SUBJECT TO ANY OTHER OBLIGATIONS OR LIABILITIES WHETHER ARISING OUT OF BREACH OF CONTRACT, TORT (INCLUDING NEGLIGENCE AND STRICT LIABILITY) OR OTHER THEORIES OF LIABILITY, WITH RESPECT TO THE PRODUCT.

Part Identification



T-Handles (Set of 4)
MB9005



2 1/2" x .3/8"
Bolt, Washer and
Locknuts (Set of
4)



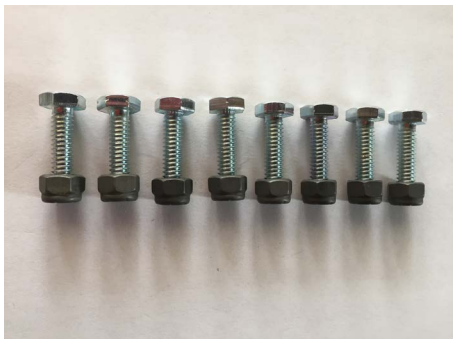
2 1/2" x 3/8" Bolts,
Washers (2) and
Locknuts (Set of 6)



2 1/2" x 1/4"
Bolts, and
Locknuts
(Set of 8)



(4) Gray Caps and (8)
self-tapping screws



1 x 1/4" Bolts and
locknuts
(Set of 8)



71" Pre-drilled Deck
Boards (set of 4)

Note: Not included
for Model KL1501
& KL2501



Deck Board
Brackets
(Set of 4)



J-Cradle
Assembly Parts
(2 sets of 3)
Small J: W1001E
Connector:
W3003
Big J: W1001A



Pier Bracket (2)



Optional
Reinforcement
Bracket
[Sold
separately]

Installation Instructions

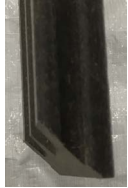
Tools Required for Assembly and Installation

- 1 Socket Wrench
- 7/16" Socket
- 9/26" Socket
- 7/16" Open End Wrench
- 9/16" Open End Wrench
- T-Square
- 3/8" Drill
- 7/16" Drill Bit
- 4 Deck Boards 72" long - Menards UltraDeck® Rustic™, Grey. 6' Board Model number 1122567

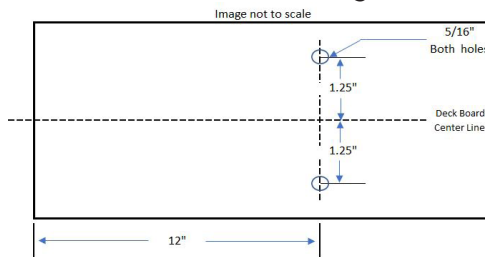


Step 1 - Prepare Boards (If purchased separately)

**Skip this step if you purchased KL1000/KL1001/KL2000/KL2001*



- 4 boards - 72" long each.
- 2 Sets of holes per board.
- 12" from each end and 2.5" apart on center. See drawing.
- Cut chamfer 45° angle on both ends across the ribs of the board. See image.



Step 2 - Building J-Cradle Assembly



- Connect W1001A and W1001B (for Model KL1001) or W2001A and W2001B (for Model KL2001) with W3003 (J-Cradle connector) using 4 - 2.5" x 3/8 bolts.
- Connect W1001A to the J-Cradle connector then W1001B. The 2 J-Cradle pieces should be touching or very close in order for the pre-drilled holes to line up. Place washer and locknut on bolt after installation and hand tighten.
- Skip this step for Gen 1 Models KL1000 and KL2000. Use the bolts in step 4.

Step 3 - Connecting Deck Side Boards



- Using 8 - 2 1/2" x 1/4" bolts and locknuts, attach one deck board (with no bracket) to the longer J-Cradle frames as pictured. Smooth side of Deck board should be against the J-Cradle. Bolt head should be in the recess side of deck board.
- Attach the second deck board (with no bracket) to the shorter bent tube frames as pictured.
- Do not over tighten. Once both boards are attached to the J-Cradle, tighten until the bolt threads stick out of their lock nuts by 1/16" to 1/8".
- Deck boards should be able to move during installation and for daily height adjustments.

Step 4 - Connecting Deck Board Brackets to 2 Deck Boards



- Attach 4 deck brackets to 2 deck boards using 1" x 1/4" bolt and locknut set of 8.
- Place deck brackets over pre-drilled holes on the smooth side of each board.
- Be sure each bracket is square to the board edge. The bolt head should be in the recess side of the board.
- Tighten until snug. Do not over tighten. 1/16" to 1/8" of bolt should show beyond the locknut.

Step 5 - Connecting Deck Boards & Brackets to J-Cradles



- Tip the Kayak Landing onto the long J-Cradle side.
- Remove the 4 locknuts and washers attached to J-Cradle and J-Cradle connector. Leave the 4 bolts in place.
- Install the lower deck board first. Remove 1 bolt. Line up the deck board bracket with the J-Cradle holes and reinsert the bolt. Make sure the bolt head is on the outside of the frame.
- Repeat step 3 for the other frame.
- Replace the washer on both bolts and hand tighten locknuts.
- Repeat steps 3, 4 and 5 for the top board.
- Tighten 4 locknuts until 1/16" to 1/8" of bolt threads stick out of the locknut.

Step 6 - Installing Pier Mount Brackets



- Install pier mount brackets (2) and attach with 4 t- handles
- The pier bracket may need to be installed with the sleeve pointing above the pier. This occurs when the water surface to pier deck distance is 13" or less for KL1001 and 6" or less for KL2001. A separate reinforcement bracket (W3004) is required and sold separately. See instructions for this under "Installation on Dock".
- Slide each bracket sleeve over the long J-Cradle side. Install 2 t-handles and hand tighten.

Step 7 - Installing PVC Caps



- Install the 4 gray PVC caps on the J-Cradle ends with 2 self-tapping screws for each cap. Holes are pre-drilled in the plastic cap.

Congratulations!

Assembly is complete and should look like this:



Installation on Dock/Pier

Note: Two people are recommended for this step.

1. Carry unit to your dock/pier
2. Make sure the pier mounting brackets are secured in the middle of the long side of the J-Cradle between the deck board and the gray cap.
3. If the distance between the water surface and the top of the pier is less than 13" then you may need to reinstall the pier mount bracket as shown in the image of step 15.
4. Find best location to ensure it is out of the way for other activities and not easily run into.
5. Set unit in the water with the pier bracket horizontal edge sitting on the dock/pier.
6. Ensure that all 6 pre-drilled bracket holes line up with places that provide solid installation. You may be able to align the unit to minimize holes drilled by using the gaps between the deck treads.
7. Check the underside of your pier to make sure you do not have pier structure interfering with the installation.
8. If there is structural interference you may need to obtain different 3/8" bolt lengths to finish your installation.
9. Lag bolts may be necessary if you do not have access to the underside of your pier. (Not provided) Please be sure this is a secure method before drilling holes. If using lag bolts - you will want to use 1/4 " drill bit to ensure proper engagement between the pier material and the lag bolt.
10. Mark the holes to be drilled into your dock/pier.
11. Remove the Kayak Landing and then drill the holes. Do not drill through the pier mounting bracket holes. This could damage the powder coating.
12. Place the Kayak Landing back in place. Have the second person stand on one of the plates while securing the first mounting plate.
13. Install the 2.5" x 3/8" bolts with a washer on the top surface.
14. A washer and the locknut should be hand tightened to all 6 bolts from the underside.
15. If the pier mounting brackets are mounted with the sleeve above the pier surface, then you will need to install the reinforcement bracket. See image below. It should be attached to the outside edge of the pier bracket.



16. Some pressure may need to be applied to allow the bracket to slide over both edges of the pier mount bracket. The short flange should be between the deck and the bracket and should slide over the outside edge of the bracket. Make sure the bolts and nuts are hand tightened. Use the J-Cradle to apply pressure by pulling on the tube toward the pier.
17. Tighten each locknut until the pier brackets are snug.

Proper use adjustments

- Determine the entry/exit side of the Kayak Landing.
- Entry/Exit side bottom boards should be approximately 2" under the water's surface.
- Hand tighten T-handle on the J-Cradle closest to Entry/Exit end.
- The opposite end should be approximately 2" above the water's surface.
- Hand tighten the 2 - T-handles on the J-Cradle.
- Your Kayak Landing is ready for use.
- Water levels change. The Kayak Landing is easily adjustable to match your waters depth. Follow the steps above.

How to use your Kayak Landing

- Place kayak on the Kayak Landing. Keep the cockpit closest to the J-Cradle end out of the water. But still between the J-Cradles.
- Step straight down into the cockpit, holding onto one of the bent tubes where comfortable.
- Once seated and ready to go - push yourself backwards on to the water by using the J-Cradle on both sides of your kayak as leverage points.
- Enjoy your time on the water.
- Upon your return - paddle your kayak into the end of the Kayak Landing where the bottom boards are under water.
- Pull yourself forward until the cockpit is closest to the J-Cradle out of the water. You should still be between the J-Cradles. The kayak should be sitting in a stable position at this point.
- Place your feet close to your seat.
- Grab hold of the coaming to push yourself to a standing position. Grab hold of the Kayak Landing J-Cradle where comfortable. Step onto the dock. Secure your kayak.

Tips for Tandem Kayak loading and unloading

Note: Width of tandem kayak cannot exceed 31"

- Following the rules above along with:
- Load stern first, unload the bow first.
- You are home without falling into the water.

**Thank you for your purchase of a Kayak Landing.
Enjoy the great outdoors!**



GSA Dorsett LLC dba Kayak Landing
PO Box 45305, Madison, WI 53744
608-616-5705
kayaklanding@gmail.com