

Lining a Kimberbell Tote Bag



Materials:

Kimberbell Blank Tote Bag

1/2 yard Lining Fabric



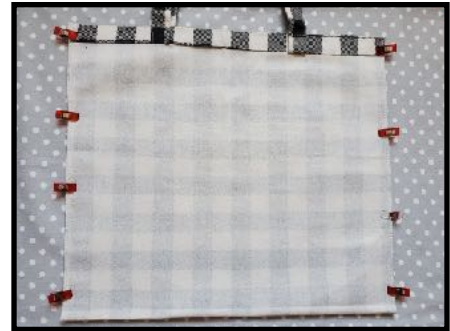
Cutting Directions:

The lining should be cut 1" longer than the Kimberbell tote.

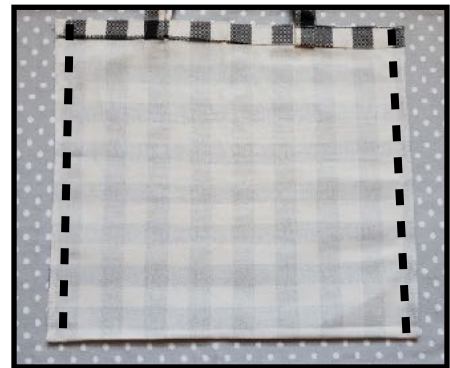
Cut the width of the lining the same as the tote.

Instructions:

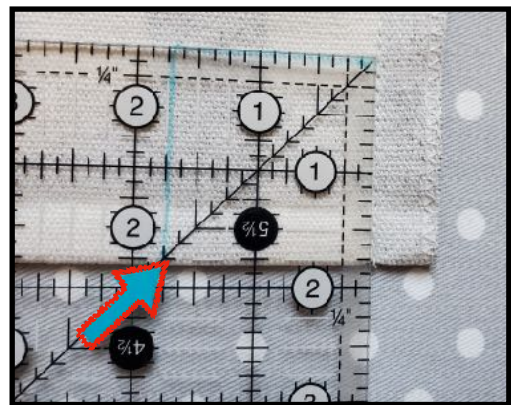
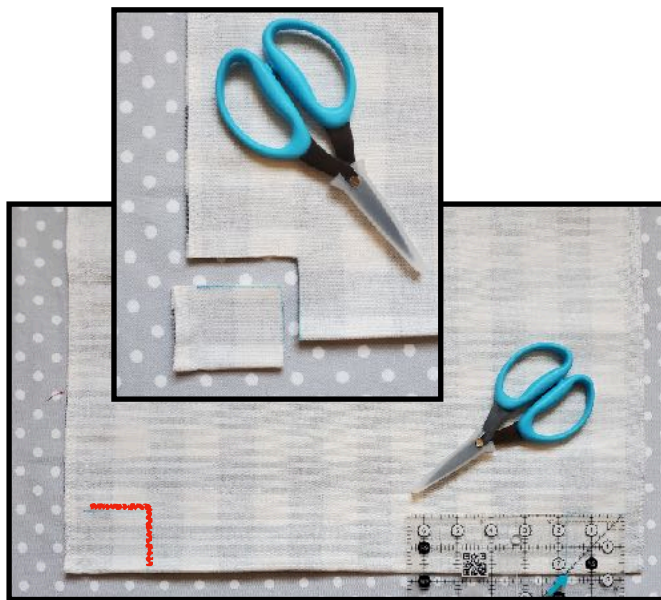
1 Fold the tote in half widthwise, right sides together, ensuring the handles are aligned. Pin or clip in place.



2 Using a $\frac{1}{2}$ " seam allowance and a triple stitch for reinforcement, sewing the sides together, ensuring to backstitch. Press this seam open to reduce bulk. Note: Starting at the top of the tote will ensure these edges align well.



3 Optional: Box the tote as desired. This is done by laying the tote, wrong sides out, and cutting a $1\frac{3}{4}$ " square from each of the two bottom corners, measuring from the seam and the bottom fold of the bag.



Align the side seam and bottom seam and stitch closed, using a 1/2" seam allowance.



4 With right sides together, fold the lining in half widthwise and stitch the side seams closed, using a 1/2" seam allowance.

Note: If optional boxed corners were made in the tote, follow step 3 to also box the corners in the lining.



5 To create a finished edge at the top of the lining, fold and press the top edge down $\frac{1}{2}$ ".



Handy Tip: use a ruler designed to take the heat of the iron. We like the Press Perfect Hot Ruler.



6 With wrong sides together, insert the lining into the tote and pin/clip along the top edges, ensuring side seams and boxed corners (optional) are aligned.

Using coordinating threads, topstitch $\frac{1}{4}$ " from the top edge to attach the lining and the tote.



1601 E Lohman Ave, Las Cruces, NM 88001
BeSewCreative-NM.com