



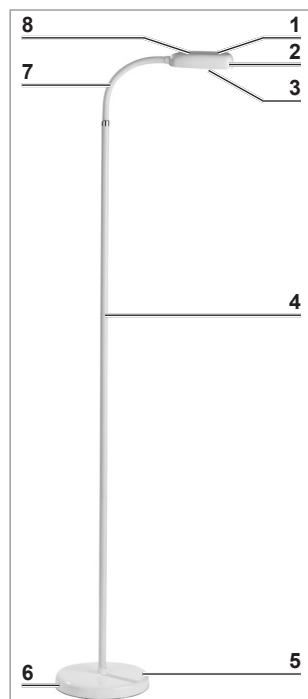
# FlexLamp™

## User Guide

### CAUTION – RISK OF PERSONAL AND PROPERTY DAMAGE

- Do not connect the product to a computer, as the high charging current could damage the computer.
- Do not use if there is visible damage to the product or the connection.
- Do not cover the product during operation, and ensure that there is sufficient air circulation.
- Protect the product from: impact, direct sunlight, sub-zero temperatures.
- Do not place any heavy objects on the product or its connection.
- Lay the connection in such a way that it is not crushed or bent and does not come into contact with hot surfaces.
- Turn off and unplug the product immediately in case of damage or malfunction.
- Unplug the power adapter from the outlet before a storm.
- Only use original accessories from the manufacturer so as not to impair the functioning of the product and to prevent possible damage.
- To protect the surface, do not use corrosive or abrasive cleaners. Wipe the product with a damp cloth as required. Then dry it off.

### Product Overview



- 1 Touch Switch
- 2 Lamp Head
- 3 LED Array
- 4 Lamp Post
- 5 Lamp Base
- 6 Charging Port
- 7 Flexible Neck
- 8 Indicator Light

### Customer Service / Importer:

QX Brands, Marietta GA 30068 USA  
2020 QX LLC | All Rights Reserved.  
[www.qxbrands.com](http://www.qxbrands.com)



### Before First Use:

1. Remove any packaging films, stickers or transport protections from the product. **Never remove the type labels!**
2. Assemble the FlexLamp according to intended usage (Floor Lamp, or Desk Lamp), see next page for assembly instructions.
3. Charge the battery (see the chapter "Charging the battery").

### Charging the Battery:



#### PLEASE NOTE!

- Use a USB power adapter that has an output current at least 1A. Do not use a computer USB port to charge!
  - Make sure the power outlet the USB power adapter is plugged into has been properly installed. The outlet should be easily accessible, so that the charger can be quickly disconnected if need.
1. Connect the USB cable to the lamp's charging port (6) and a USB power adapter.
  2. Plug the USB power adapter into a power outlet. The indicator light (8) will illuminate while charging. The battery is fully charged when the indicator light shuts off.
  3. After charging, unplug the USB power adapter from the outlet and then the USB cable from the lamp's charging port (6).

### Usage

1. Place the lamp on a dry, level surface.
2. Turn the lamp head (2) to the desired position.
3. Tap the Touch Switch (1) to operate the lamp:  
Tap once: warm white light  
Tap again: universal white light  
Tap again: cool white light  
Tap again: Off
4. To set the brightness, tap and hold the Touch Switch (1) while the lamp is on. Release the switch when the desired brightness is reached.

### Technical data

Model number:	PL5001
Color temperature:	2800K / 5200K / 6500K
Brightness:	Max. 330 lm
Ra:	>85
Power Input:	DC 5V 1A
Battery Capacity:	LiPo battery 3.7V 5000 mAh
Charging time:	Approx. 8 hours
Operating time:	Approx. 5 – 6 hours with one charge, up to 20 hours depending on the brightness level
Power:	5W



### Disposal

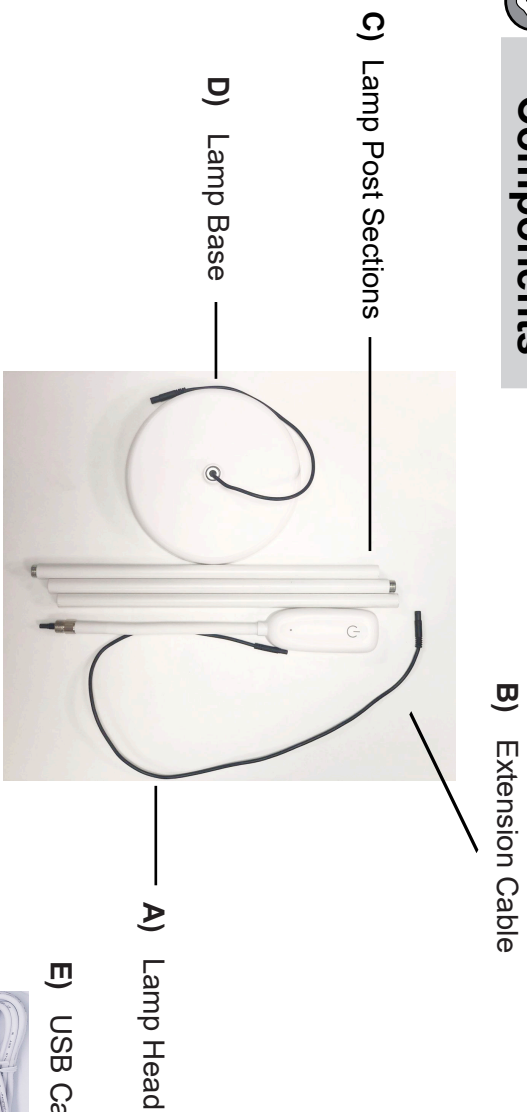


Please dispose of packaging materials in an environmentally friendly way and take recyclables to collection facilities.



This product is subject to European Directive 2012/19/EU on Waste Electrical and Electronic Equipment (WEEE). Do not dispose of the product with built-in battery as normal household waste, but through an authorised waste disposal company in an environmentally friendly way.

## Components



B) Extension Cable

A) Lamp Head

E) USB Cable

## What's in the Box:

- A) Lamp Head x1
- B) Extension Cable x1
- C) Lamp Post Section x3
- D) Lamp Base x1
- E) USB Cable x1
- F) User Guide (This sheet) x1

USB power adapter (not included) is required for charging.



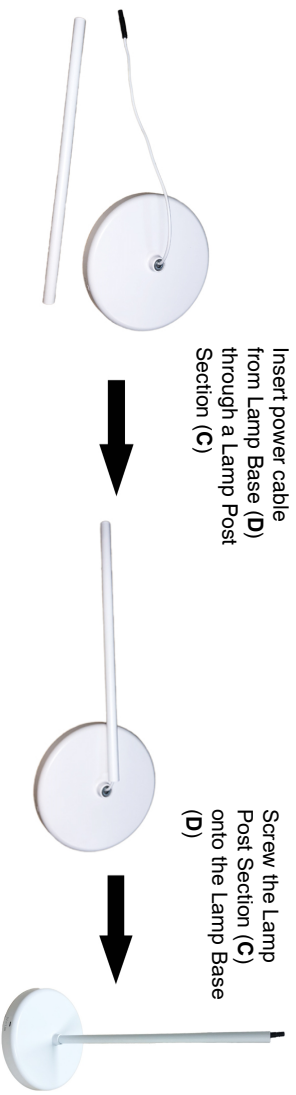
Check the box contents for completeness and the components for transport damage. Do not use if the product is damaged and contact customer service immediately.

## Need Help?

SCAN ME



## 1) Desk Lamp (approx. 16" tall)



Insert power cable from Lamp Base (D) through a Lamp Post Section (C)

Screw the Lamp Post Section (C) onto the Lamp Base (D)

Install Lamp Head (A)

Connect the power cables first, then attach the Lamp Head (A) and rotate to tighten.

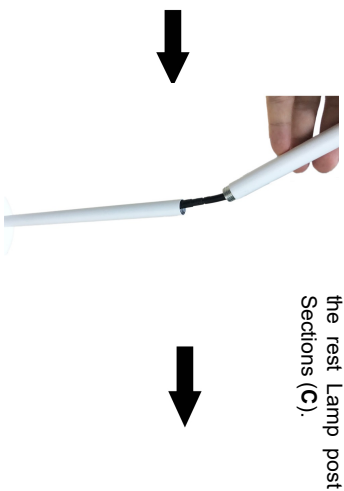


approx. 16"

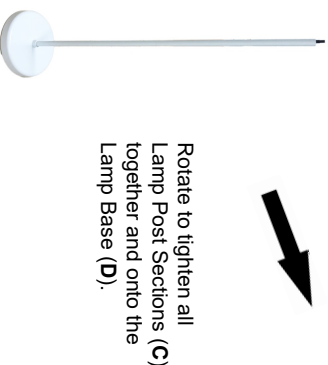
## 2) Mini Floor Lamp (approx. 48" tall)



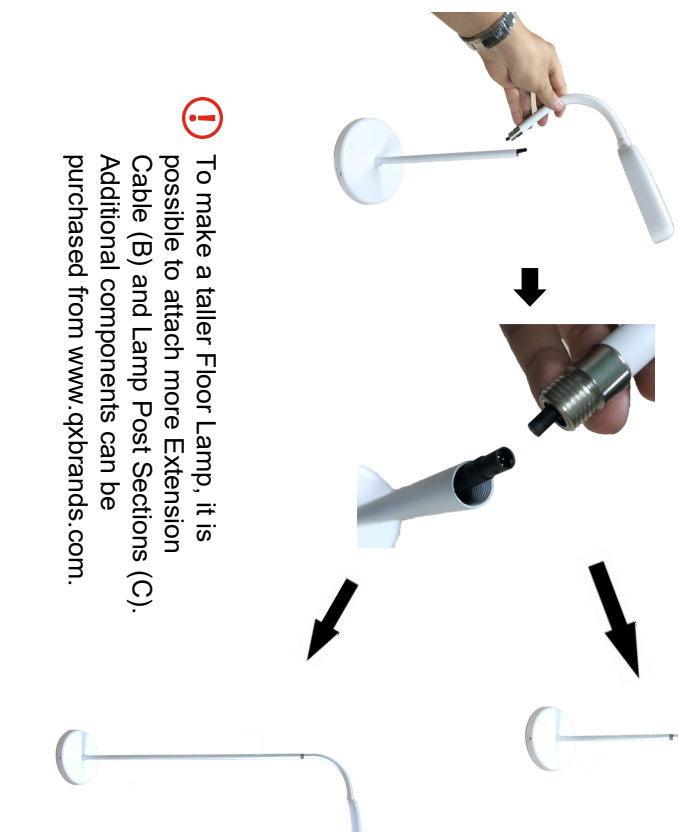
Connect Extension Cable (B) to the power cable from the Lamp Base (D).



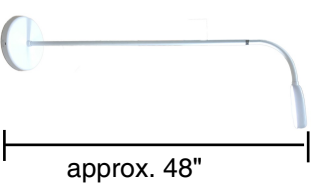
Insert the Extension Cable (B) through the rest of the Lamp post Sections (C).



Rotate to tighten all Lamp Post Sections (C) together and onto the Lamp Base (D).



To make a taller Floor Lamp, it is possible to attach more Extension Cable (B) and Lamp Post Sections (C). Additional components can be purchased from [www.qxbrands.com](http://www.qxbrands.com).



approx. 48"