

Raine Tactical Bridger™ Installation Instructions

Please read over the entire instruction booklet and watch the instruction videos before starting.

The Bridger™ Instruction Videos are located at:

- www.rightbridgerinstall.com
- www.leftbridgerinstall.com
- Installation Customer Support:
bridger@rainetactical.com

Bridger™ Components Provided in Your Packaging:

1. Bridger™ Main Body
2. Two Zip Ties
3. Quick Release Pull Cord Extender
4. Short Zip Tie Sleeve
5. Long Zip Tie Sleeve
6. Two VELCRO® ONE-WRAP® Attachment Garages



Suggested Tools for Installation:

1. Box Cutter, Sharp Knife, or Razor Blade
2. Needle Nose Pliers
3. Mini Flathead Screwdriver
4. Regular Sized Flathead Screwdriver
5. Cutting Pliers



Pre-Installation Information

Please read over the entire instruction booklet and watch the instruction videos before starting.

The Bridger™ Instruction Videos are located at:

- www.rightbridgerinstall.com
- www.leftbridgerinstall.com
- It is recommended that you attach your preferred MOLLE/PALS pouch to your Bridger™ prior to installation onto a FirstSpear® cummerbund. This is the easiest time to do so.
- If you are installing one Bridger™, it is recommended you install the Bridger™ on the opposite side (cummerbund) from your dominant shooting hand. Right-handed shooters should install on the left cummerbund. This process is up to you. For example, you can mount your radio pouch on the Bridger™ on the opposite side you hold your rifle.
- These instructions focus on the installation of a Bridger™ on the right cummerbund. You would only need to mirror the instructions to install the same Bridger™ on a left side cummerbund.

Installation

Step 1: Put the Bridger™ main body facing towards you in the direction you wish to install it. Make sure the metal bracket legs are pointing towards the main body of the cummerbund.

Step 2: Locate the two zip ties. Once you know the side you want to install your Bridger™, push the two zip ties side by side into the MOLLE/PALS channel closest to the metal bracket legs at the bottom of the Bridger™ body as shown in the pictures below. Push the two zip ties all the way through so they emerge on the topside of the Bridger™ body.



Left Cummerbund Setup



Right Cummerbund Setup

Step 3: Turn the Bridger™ main body around so the backside is facing you and the zip ties are facing away from you.

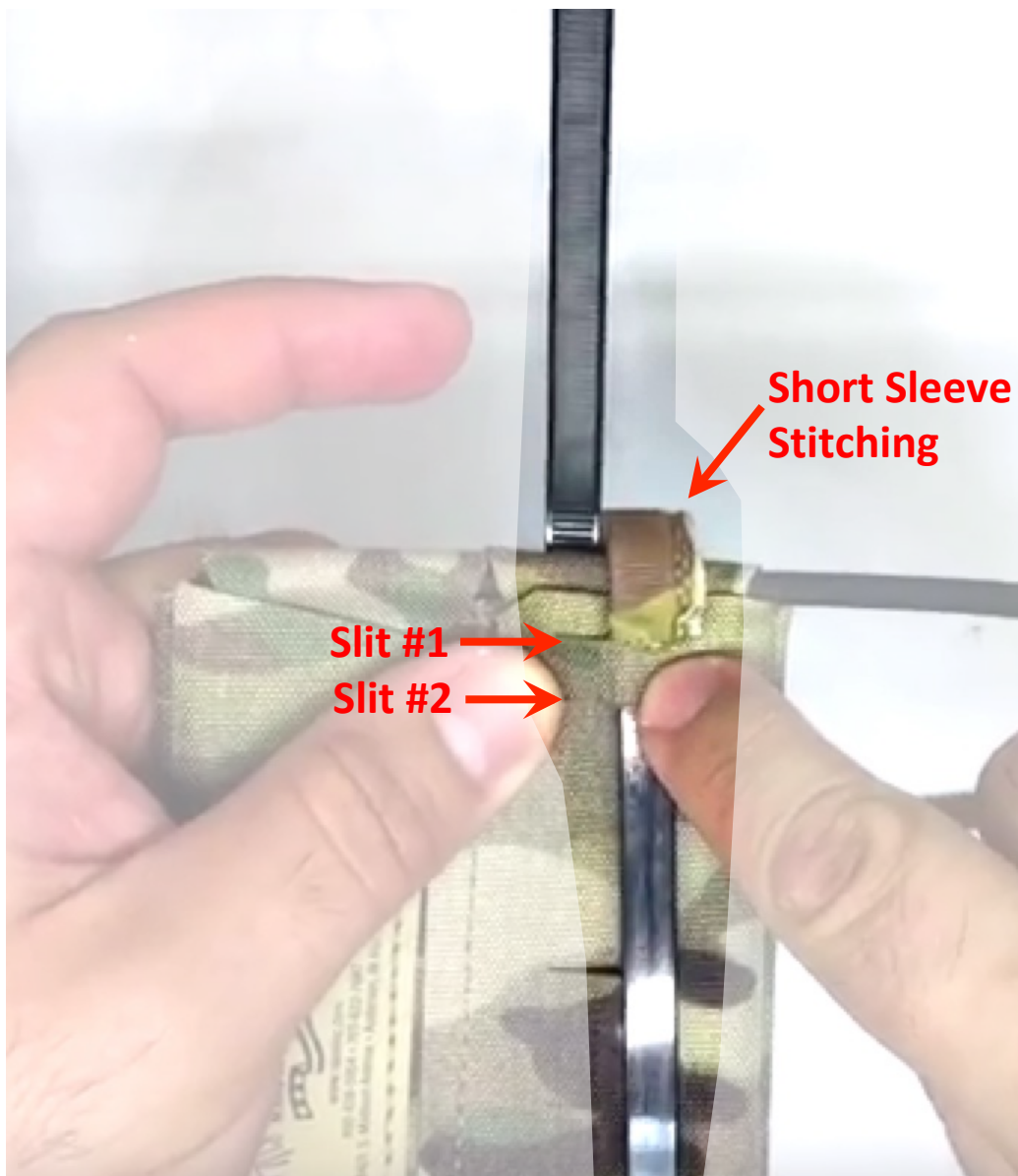
Step 4: Grab the shortest zip tie sleeve and slide the sleeve over the zip tie nearest to the metal bracket legs. Make sure the short sleeve stitching is facing towards the metal bracket legs.



Step 5: Slide the short sleeve down the zip tie and tuck it 1/8" to 1/4" into the front of the Bridger™ main body under the laser cut MOLLE/PALS material.



Step 6: After the short sleeve is tucked into the front of the Bridger™, weave the zip tie through the top two slits on the backside of the Bridger™ body. Make sure the stitching on the short sleeve is facing towards the metal bracket legs.



Step 7: Grab the longer sleeve for the inside positioned zip tie that is farthest away from the exposed metal bracket legs and slide the long sleeve over the zip tie.

Make sure the stitching on the long sleeve is facing away from the metal bracket legs.



Step 7.
Right Cummerbund

Step 8: Tuck the long sleeve zip tie 1/8" to 1/4" into the front of the Bridger™ main body under the laser cut MOLLE/PALS material.



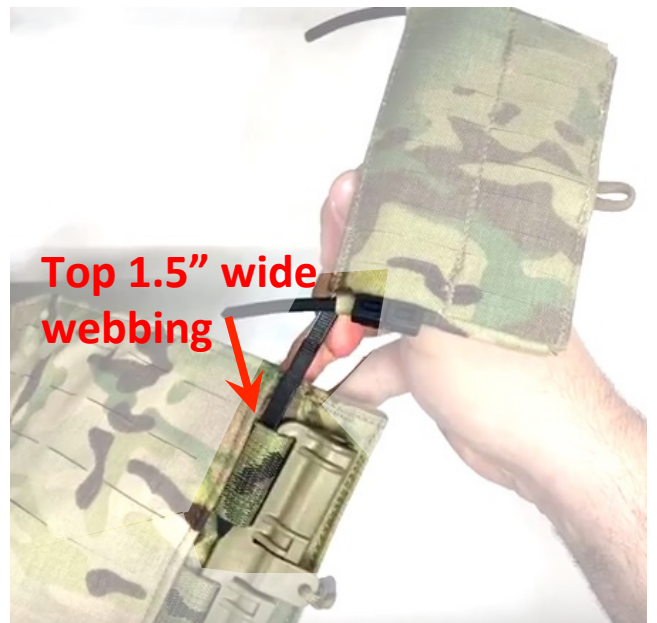
Right Cummerbund

Step 9: Grab the short sleeve zip tie. You should have woven this zip tie through the top two slits on the backside of the Bridger™ body in Step 6.



Steps 9.
Right Cummerbund

Step 10: Weave the the short sleeve zip tie through the top 1.5" wide webbing on your cummerbund as shown in the picture.



Step 10.
Right Cummerbund

Step 11: Continue to weave the short sleeve zip tie through the two middle slits on the backside of the Bridger™ body.

Middle Slit #1 →
Middle Slit #2 →



Step 11.
Right Cummerbund

Step 12: After clearing the middle slits on the backside of the Bridger™, weave the short sleeve zip tie through the bottom 1.5" wide webbing on your cummerbund.

Bottom 1.5" Wide Webbing →



Step 12.
Right Cummerbund

Step 13: After clearing the bottom 1.5" wide webbing on the cummerbund, weave the short sleeve zip through the bottom two slits on the backside of the Bridger™ body.



DO NOT close or secure any zip ties at this point.

Step 14: Fold the long sleeve zip over the backside of the Bridger™ body and Tubes™ Buckle.

Ensure that everything is aligned and woven properly before moving to the next step.



Step 14.
Right Cummerbund

Step 15: The long sleeve zip tie can now be secured and closed at the bottom of the Bridger™ body.

DO NOT tighten the zip tie after you secure it. This will be done in Step 16.

DO NOT cut your zip ties, this is done on Step 26.



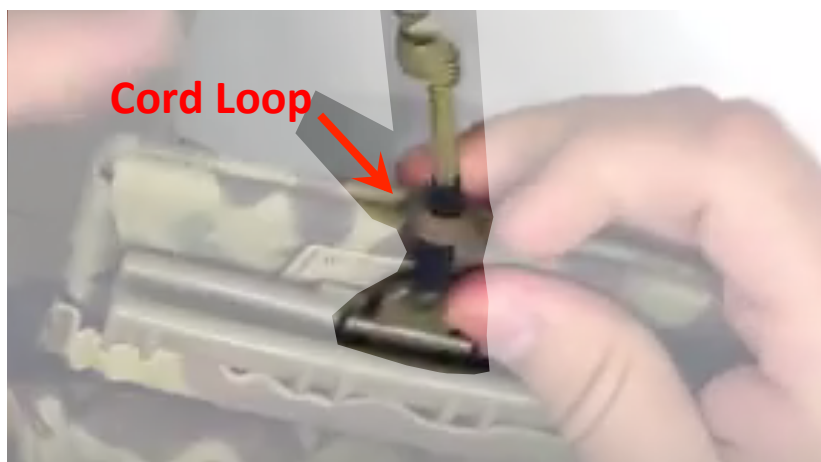
Step 15
Right Cummerbund

Step 16: Now you may secure and close the short sleeve zip tie at the bottom of the Bridger™. Tighten each zip tie until they are firmly snug. Be careful to not over tighten the zip ties.

DO NOT cut your zip ties, this is done on Step 26.



Step 17: Weave the FirstSpear® Tubes™ buckle quick release pull cord through the cord loop on the middle edge of the Bridger™.



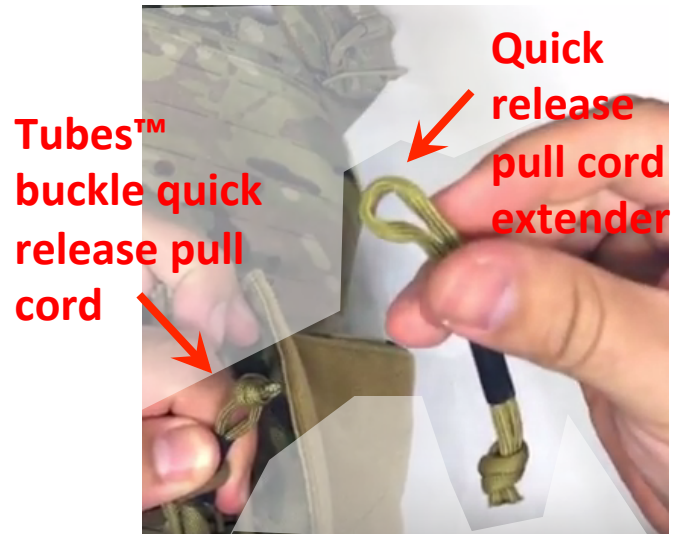
Quick Release Pull Cord Extender Installation:

Step 18: Use your hand or an available tool to open up space at the end of the FirstSpear® Tubes™ buckle quick release pull cord if needed to allow the Tubes™ Quick Release Pull Cord Extender to be woven through the opening.



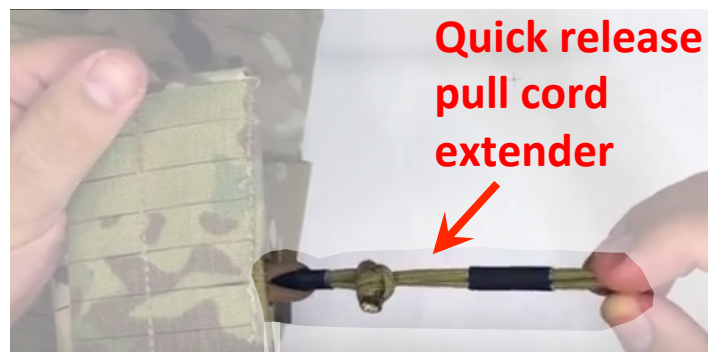
Step 18.

Step 19: Grab your Bridger™ Tubes™ Quick Release Pull Cord Extender. Insert the opened loop portion of the Bridger™ Tubes™ Quick Release Pull Cord Extender through the opening you created in the previous step on the FirstSpear® Tubes™ quick release pull cord.



Step 19.

Step 20: Weave the Pull Cord Extender through itself and tighten to secure the Tubes™ quick release cord and the extender together.



Step 20.

Step 21: Grab the two VELCRO® ONE-WRAP® Attachment Garages. Slide each of these garages onto the metal bracket legs with the VELCRO® ONE-WRAP® straps pointing towards the middle of the cummerbund. The hook side of the Velcro (coarse side) should be facing up towards you. The loop side of the Velcro (soft and fuzzy side) must be facing down towards the cummerbund.



Step 22: Once both garages are slipped onto the metal bracket legs, flip them both to point away from the cummerbund. This is the best time to attach any MOLLE/PALS pouches that will be located between or over the metal bracket legs onto your cummerbund.



Step 23: Open up the cummerbund to get access to the inside of the cummerbund, like you would to insert soft armor. On the top positioned garage, weave the VELCRO® ONE-WRAP® straps through the top most MOLLE/PALS slits located on the cummerbund or the row of MOLLE/PALS slits that line up best with the metal bracket leg. Fold the VELCRO® ONE-WRAP® straps downward and securely attach them to the interior of the cummerbund.

Continue this step for the bottom garage, you may need to select a row of MOLLE/PALS slits slightly above or below the metal bracket leg. Select the row that works best for your setup of other pouches on the cummerbund and location of the MOLLE/PALS slits. **Be careful in this step to ensure the cummerbund material does not get crumpled** (if it looks like fried bacon after you have attached the garages it's bad, if it looks flat and smooth it's good).



Note: You may not need both garages if you mount pouches to the side of the cummerbund. You may run the metal bracket legs underneath the pouch webbing or attachment straps of the pouch to accomplish the same thing the garages do. The garages secure the metal bracket legs to the cummerbund and keeps them from rolling over the top or bottom edge of the cummerbund. For example, you may only need to use one garage instead of two if you have a small pouch mounted to the cummerbund over the metal bracket legs.

DO NOT cut your zip ties, this is done on Step 26.

Step 24: Put on your plate carrier and close both sides of your FirstSpear® Tubes™ quick release buckles. Test the side with the Bridger™ to ensure it is comfortable, installed correctly, and that you can properly open and close the FirstSpear® Tubes™ buckles (Verify you can Don and Doff the plate carrier with the Bridger™ installed).

Note: See the instructions on page 17. to properly undo the zip ties and remove the Bridger™ if you had any issues in the install (Things are not lining up, opening or closing correctly).

Step 25: If you did not attach your MOLLE/PALS pouch before installation onto the Bridger™, you may do so at this time. A flat head screwdriver can be helpful to open up space between the MOLLE/PALS slits to weave your pouch webbing and secure it.

Step 26: You may now cut off the excess portion of the zip ties from the Bridger™ with your cutting tool.

If you feel the cut zip tie ends are too sharp, use a box cutter, knife, or disposable razor blade to smooth out the edge of the cut zip tie.



Step 26.
Right Cummerbund

Be very careful in doing this step to not cut yourself or the fabric.

Instructions: How to Undo the Zip Ties

Step 1: Use a thin small flat head screwdriver to push down the zip tie securing tongue. This disengages the zip tie securing tongue and allows you to undo and pull out the zip tie body.

Step 2: Once you push down the securing tongue of the zip tie, pull the zip tie body out to undo and release the connection.



This concludes the installation instructions for the Bridger™.

Thank you for choosing Raine Tactical.

You may contact us any time at 800-826-5354 or at rainemail@raineinc.com.

Check out www.rainetacticalgear.com to view other high end tactical products today!

NOTES: _____

Disclaimer: The Strandhögg™ plate carrier pictured is made by FirstSpear, LLC and the Bridger™ products are made by Raine, Inc. FirstSpear®, Tubes™, 6/12™, 6/9™, and Strandhögg™ are trademarks of FirstSpear, LLC.