

STARCO

PROJECT LED STRIP KIT

LED STRIP + EXTRUSION + PC COVER + DRIVER

SKU: SL-S6W12-CH+D

SKU: SL-S12W12-CH+D



DIMMING



<IP65



warranty

4 Years



3000k



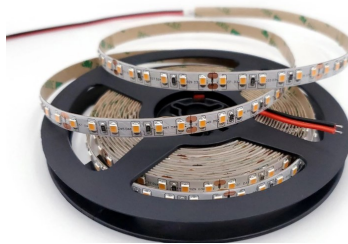
4000k



5000k



RGB

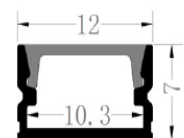
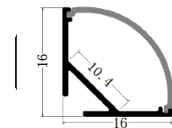
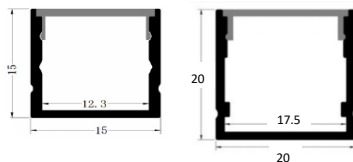
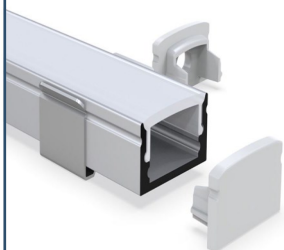
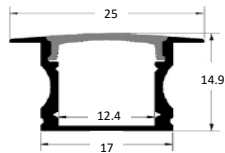


3000k, 4000k, 5000k 6000k, CCT Changable



RGBW

Voltage	Power	LED	Emitting colour	Kelvin (CTI)	Material	IP rating	Angle	MacAdam
12/24VDC	6w	2835	Warm white	3000k	Aluminum / PC cover	IP20/IP65	120°	3 step
12/24VDC	6w	2835	Cool white	4000k	Aluminum / PC cover	IP20/IP65	120°	3 step
12/24VDC	6w	2835	Daylight	5000k	Aluminum / PC cover	IP20/IP65	120°	3 step
12/24VDC	12w	2835	Warm white	3000k	Aluminum / PC cover	IP20	120°	3 step
12/24VDC	12w	2835	Cool white	4000k	Aluminum / PC cover	IP20	120°	3 step
12/24VDC	12w	2835	Daylight	5000k	Aluminum / PC cover	IP20	120°	3 step
12/24VDC	14.4w	5050	Multi-colour	RGB	Aluminum / PC cover	IP65	120°	3 step

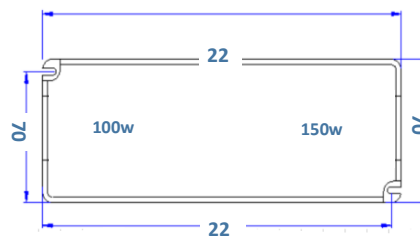
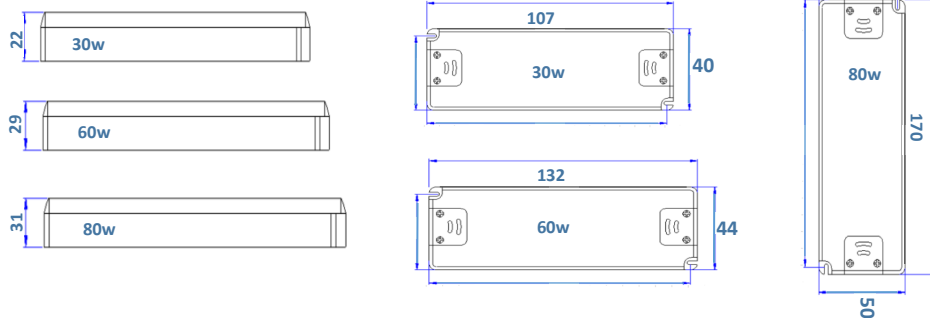


LED DRIVERS FOR LED STRIP

High quality LED drivers for driving LED strip and low voltage outdoor decorative lights such as deck lights. Our project strip kits have the appropriate driver already matched within the kit.

- Available for indoor and IP67 weatherproof.
- Internal protection: Short circuit, over temperature, over current, overload, over voltage.

Driver	Input Voltage	Output voltage	Output current	Power	IP rating
SL-LD30W12	240VAC	12VDC	2.5 amps	30w	IP20
SL-LD60W12	240VAC	12VDC	5 amps	60w	IP20
SL-LD80W12	240VAC	12VDC	6.67 amps	80w	IP20
SL-LD100W12WP	240VAC	12VDC	8.33 amps	100w	IP67
SL-LD150W12WP	240VAC	12VDC	12.5 amps	150w	IP67
SL-LD200W12WP	240VAC	12VDC	16.66 amps	200w	IP67



STARCO LIGHTING

07 3808 3906

info@starcolighting.com.au

www.starcolighting.com.au

Unit 6, 11 Eileen Street

Underwood QLD 4119