

# INDUSTRIAL COOLING SYSTEMS



## YOUR COOLING SPECIALIST

DESIGN & MANUFACTURE OF COOLING SYSTEMS  
FOR  
MARINE, OFFSHORE, INDUSTRIAL, OIL & GAS  
&  
POWER GENERATION  
APPLICATIONS

Email: [info@dolphinradiator.com](mailto:info@dolphinradiator.com)

Web: [www.dolphinml.com](http://www.dolphinml.com)

Group Web: [www.dolphinheattransfer.com](http://www.dolphinheattransfer.com)

## Horizontal Series

Horizontal Remote Radiators are suited to a wide variety of applications. Using a modular design method ensures flexibility for different heat transfer surfaces such as water & oil.

Cooler Performance is optimized by the use of draw-through fans-This maximizes fan efficiencies and air distribution across the heat transfer matrix.

The horizontal series offers extended service life, low noise levels, fan power levels, and the modular construction provides for easy maintenance and services activities.



## Vertical Series

The Vertical Series represents a range of cooling units able to incorporate heat transfer surface suitable for water, Oil, Compressed air and process fluids.

The 'Axial Flow' arrangement uses a duct mounted fan which provides scope to cater for additional air side resistance, as encountered in canopies, plant rooms and noise attenuated installations.

This Product series is of heavy duty construction and provides inherent flexibility in installation, whether by direct mounting to the engine skid, wall-mounted, or alternatively, in a free standing situation. The modular construction allows ready access for ease of servicing.



# Remote Radiator Series

1	DES-SERIES	Engine Driven Fan-Single Radiator
2	DET-SERIES	Engine Driven Fan-Twin Radiator
3	DMS-SERIES	Motor Driven Fan-Single Remote Radiator
4	DMT-SERIES	Motor Driven Fan-Twin Remote Radiator
5	DBS-SERIES	Belt Driven Fan-Single Remote Radiator
6	DBT-SERIES	Belt Driven Fan-Twin Remote Radiator
7	DMH-SERIES	Motor Driven Fan-Horizontal Remote Radiator
8	DBH-SERIES	Belt Driven Fan-Horizontal Remote Radiator

\*Inlet Coolant Temperature=98° C

\*\*Air Ambient Temperature=Max. 55° C

\*\*\*Coolant=Water or Glycol+Water Mixture



WAUKESHA  
L36 GL GAS GENSET



CAT 3516 HD ENGINE -  
1637 KW HORIZONTAL RADIATOR



CAT 3516 HD ENGINE  
REMOTE VERTICAL RADIATOR



CUMMINS KTA50 G3



WAUKESHA L7044 GSI  
GAS GENSET

## Major Components

- Axial flow Fan(s) with Motor(s)
- Single/Multipass Cooling Coils
- Mounting Skid
- Fan Cowl(s)
- Coil Protection Grill(s)
- Auxiliary/Expansion Tank
- Coolant level Indicator
- Control Panel

## Technical Details

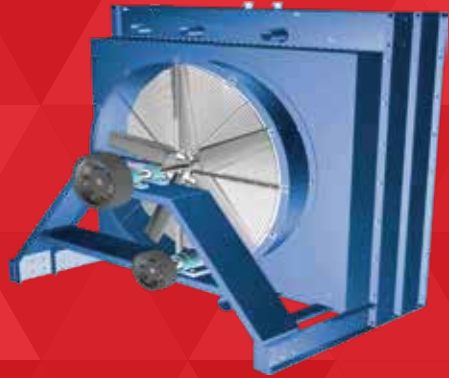
- **Heat capacity range** : 1 kw to 2.5 mw
- **Size** : 100 x 100 mm to 12 mtr. x 2.5 mtr.
- **Air face velocity** : 0.5 m/sec. to 6 m/sec.
- **Tube option** : Elliptical Solder Coated  
Brass, Round Copper, Finned, Carbon Steel,  
Stainless Steel or Customer specified etc.
- **Fin option** : Corrugated Copper, Flat  
Copper, Flat Steel, Flat Aluminium, Round  
Copper, Round Aluminium or Customer  
specified etc.



# Remote Radiator Series



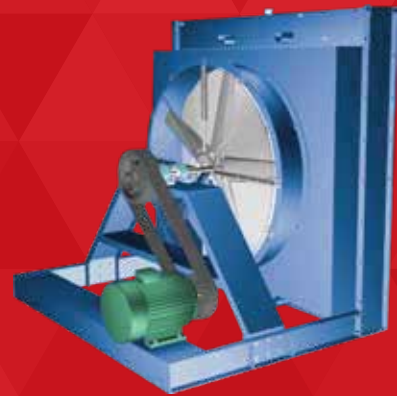
**DES-SERIES**



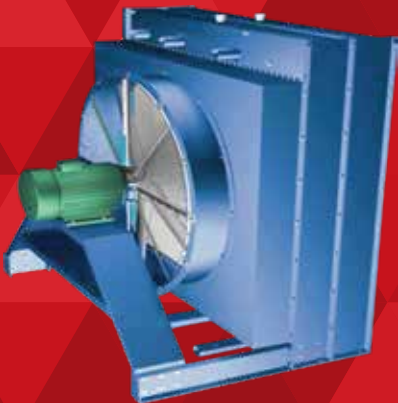
**DET-SERIES**



**DMS-SERIES**



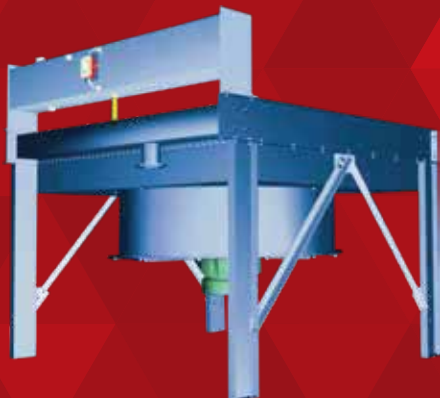
**DBS-SERIES**



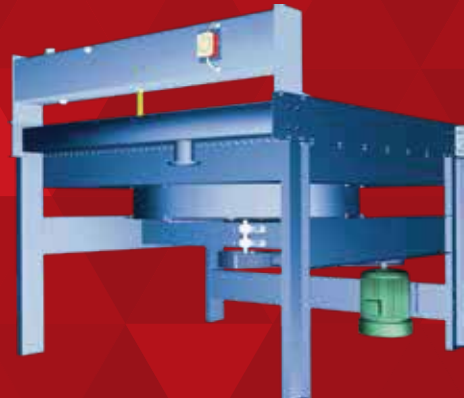
**DMT-SERIES**



**DBT-SERIES**



**DMH-SERIES**



**DBH-SERIES**

# Our Quality Policy

Ensuring product quality is the cornerstone of everything we do, we believe that this quality comes hand in hand with the internal procedures which we have in place.

We are continuously investing in product certification, manufacturing techniques and in our quality system. Our company policy, which focuses on quality, aims at the optimisation of our procedures, allowing us to manage many different types of project. This allows us to guarantee the quality of all of our products, with the maximum attention to every detail. In order to reach our goals we daily produce project Specific Quality and Test Plans, offer materials traceability and quality certificates and carry out continuous visual and dimensional checks.

## Manufacturing Facility

To meet our customer's demand with regards to quality and service, state of the art production machinery is not enough on its own. In addition we have developed and implemented, aided design and ERP software.

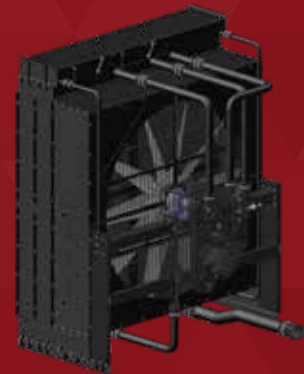
## Our Certification's



# Some of Our Executed Projects



**\*\*\*We offer cooling systems in Aluminium & Copperbrass**



## US SALES OFFICE

2307 Blue Smoke Ct N

Fort Worth, TX 76105

Tel: : 1-(844)-5-DOLPHIN /

1-(844)-536-5744

Email : [customerservice@dolphinradiator.com](mailto:customerservice@dolphinradiator.com).

Web: [www.dolphinradiator.com](http://www.dolphinradiator.com)

## CORPORATE OFFICE

Middle East,

Africa & Asia Pacific Sales Office

### Dolphin Group

New Industrial Area

P.O.BOX 20678, Ajman, UAE

Phone : +971-6-7032999

Fax : +971-6-7032929

Email : [info@dolphinradiator.com](mailto:info@dolphinradiator.com)

Website : [www.dolphinml.com](http://www.dolphinml.com)

## INDIA SALES OFFICE

Dolphin Heat Transfer Private Ltd

Plot No- PAP-G 107

Chakan MIDC phase -III

Near Mercedes - Benz plant,

Tal. - Khed, Dist. - Pune

Pin code - 410501

Mobile: +919923100907

Email : [india.office@dolphinradiator.com](mailto:india.office@dolphinradiator.com)

Web: [www.dhtind.com](http://www.dhtind.com)

Global E-Catalogue : [www.dolphincatalogue.com](http://www.dolphincatalogue.com)

USA E-Catalogue : [www.dolphinradiator.com](http://www.dolphinradiator.com)