



DFStudio Inc.
243 Grandview Ave
Staten Island NY 10303

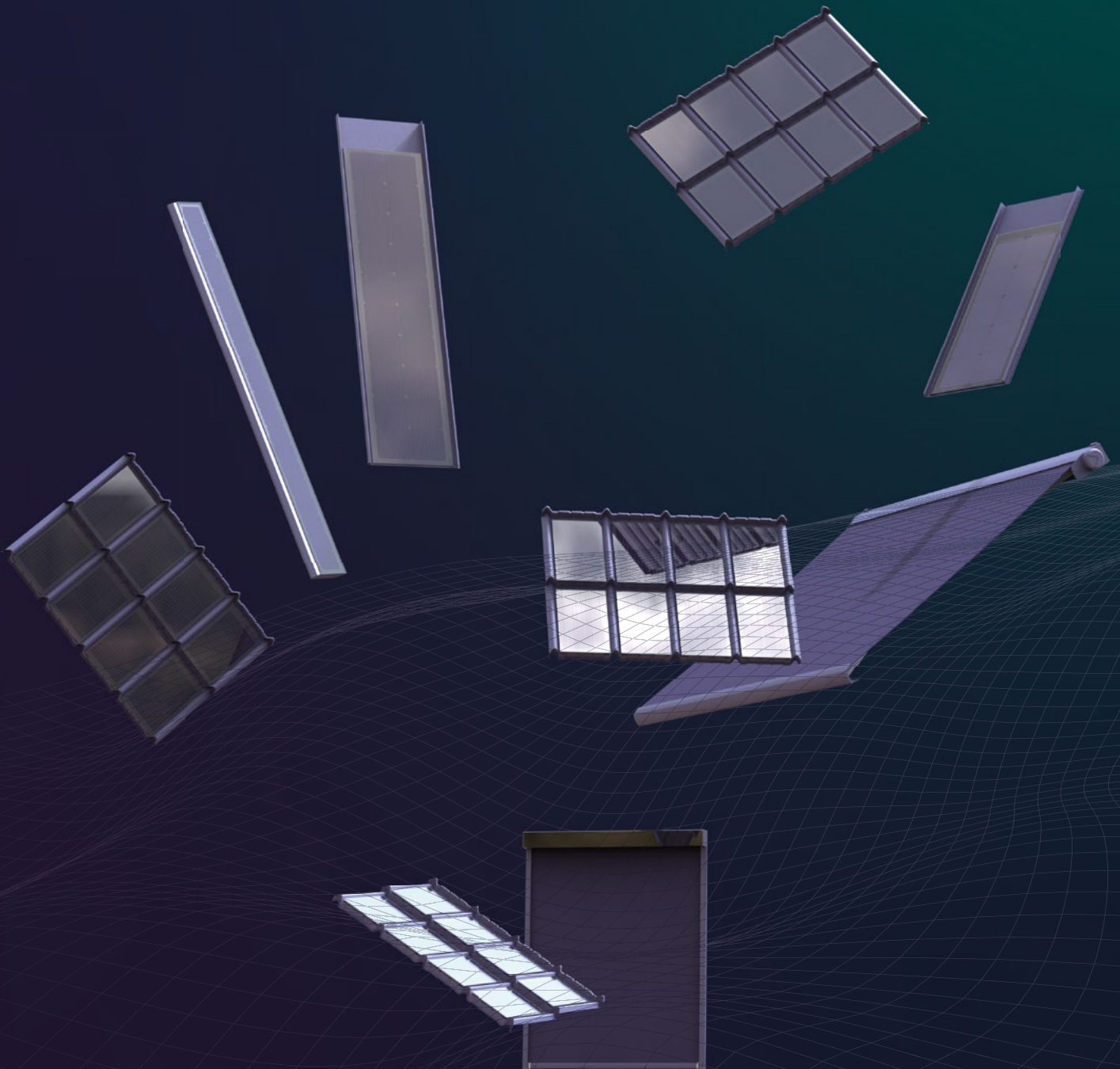




Table of contents

Introduction	4-5
Our brands	6-7
Products overview	8-9
Electrotile R&D	10-11
Solar roof tiles	12-25
Solar fences & balustrades & walls	26-41
Solar shading systems	42-53
Solar urban furniture	54-57
Solar carports	58-63
Energy storage system	64-65
Cooperation offer	66-73
Our projects	74-77
Contact Us	78-79

Where Design Meets Architecture

Having worked with clients for years, we know very well how important the aesthetics of a building are. When we raise a new building or renovate it we are making decisions for many years, not only for us but also for future generations. We understand this perfectly, we respect customers' expectations and their funds therefore we create products that are timeless and beautiful. Our work and commitment and understanding of the market have been repeatedly recognized in international competitions, of which we are extremely proud. Nevertheless, for us this is just a signpost that we are heading in the right direction.



reddot winner 2021



reddot winner 2020



Our
Brands



DFStudio Inc.
243 Grandview Ave
Staten Island NY 10303

**We don't create
products, We
reinvent them.**

 **enovio**

Photovoltaic fences & balustrades

solarbreaker

Photovoltaic sun shading systems

+ADDSOLIS

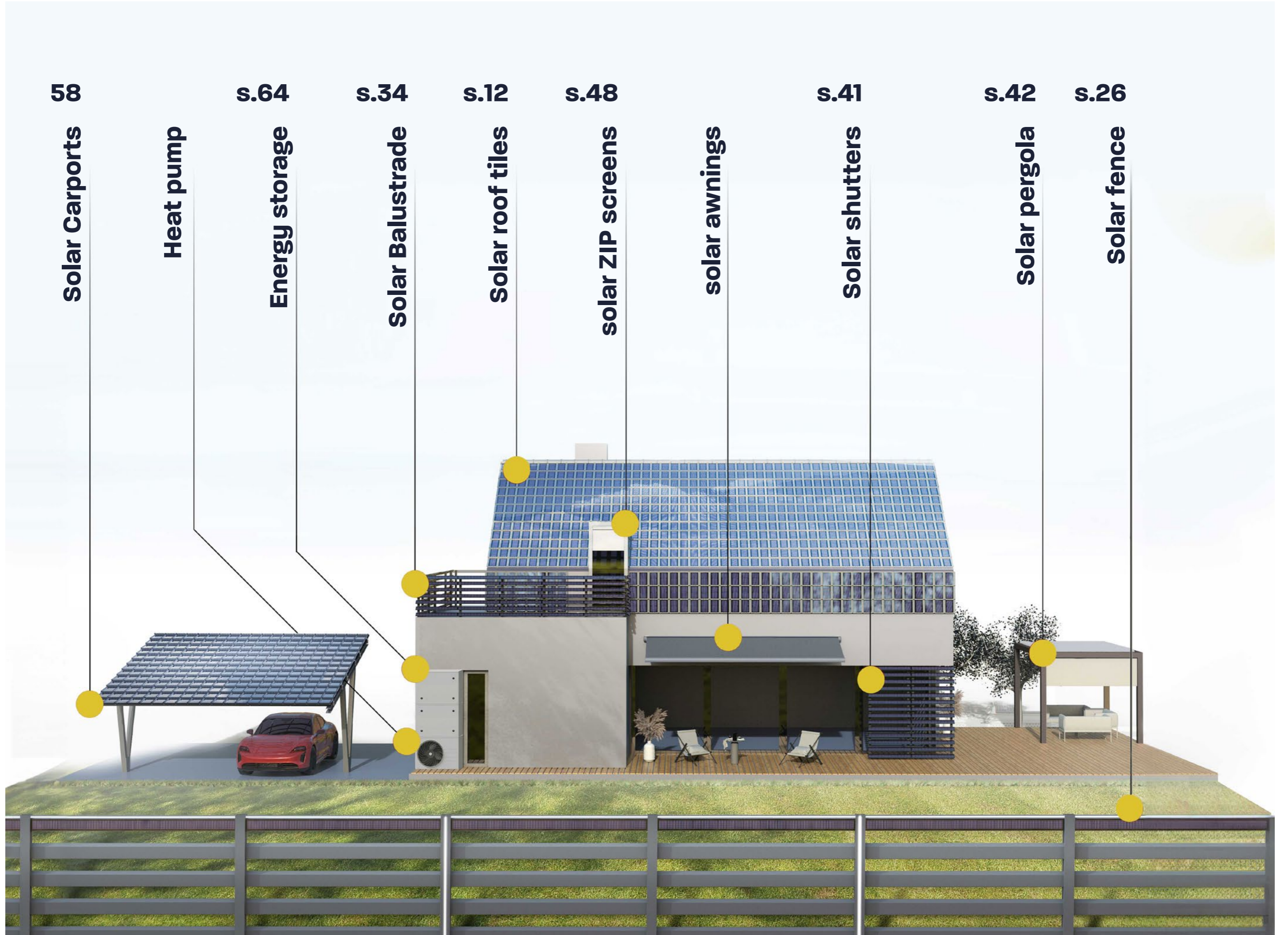
Photovoltaic carports

Breeze

Energy storage systems

MINIVO

Photovoltaic mobile tiny houses



58

Solar Carports

Heat pump

s.64

Energy storage

s.34

Solar Balustrade

s.12

Solar roof tiles

s.48

solar ZIP screens

solar awnings

s.41

Solar shutters

s.42

Solar pergola

s.26

Solar fence

Electrotile LABS

Development through technology and research

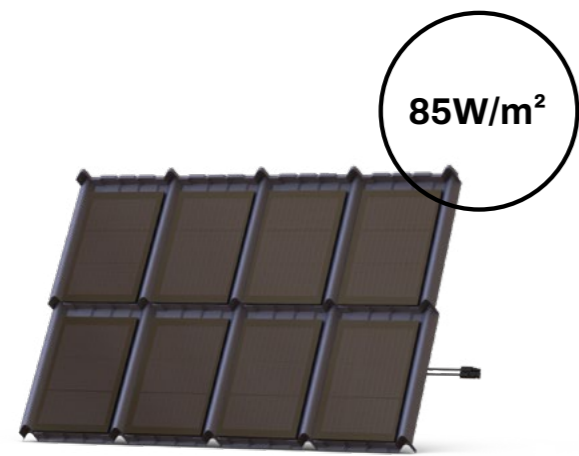
We have been building research and development centers and developing our factories for nearly 10 years. Currently, our production is divided into 4 locations - each for different products. We have a developed photovoltaic module production line equipped with technology to automate the process and advanced testing equipment for module testing. In addition, we have CNC machining centers for profile, laser, press brakes, and many other machines that allow us to prototype and implement

innovative solutions in the field of integrated photovoltaics. What's more, we make sure that the manufacturing process is refined and optimized. We have advanced storage systems where material awaits processing. Each product is properly tested before it is shipped to the customer, and only after it meets strict factory standards can it set off on its journey to the customer.



eTile Classic

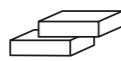
eTile is a modular metal roof tile with integrated photovoltaic panels developed by us. Timeless design and easily adapting to almost any building, eTile integrates a thin photovoltaic panel in a steel roof shingle. The user-friendly panels can be installed on many types of building, an additional advantage is the ease of installation. Furthermore, the combination of two functions within a single two-in-one panel reduces the purchase and installation costs for a solar system.



powered
by the sun



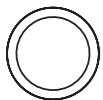
sustainable
design



flat
packaging



efficient



2 in 1



awarded
many
times



easy
installation



on grid



eTile classic PV8

eTile pv8 is the standard, most powerful module. All its fields are covered with photovoltaic panels. The total power of the module is 85 watts. The micromodules are connected to each other under the metal sheet and there is one mc4 connection with the entire module

Height	820mm
Width	1190mm
Thickness	40mm
Material	Tapered glass based on metal sheet
Coverage	two-layer coverage 50 microns thick
Minimum roof slope	12°
Module efficiency	85W
Connectors	MC4

85W/m²



eTile classic steel

eTile steel is a perfect complement to the eTILE solar roof, the modules can be freely cut to fit all nooks and crannies of the roof. In addition, steel modules can be used on roof slopes which are not directly facing the sun or have large shading.

Height	820mm
Width	1190mm
Thickness	40mm
Material	Tapered glass based on metal sheet
Coverage	two-layer coverage 50 microns thick
Minimum roof slope	12°



eTile classic PV4

eTile pv4 is a complementary variant, designed to complete installations where edge trimming is required. eTile PV4 can be used at the edge of the roof, next to dormers, or around skylights and chimneys.

Height	820mm
Width	1190mm
Thickness	40mm
Material	Tapered glass based on metal sheet
Coverage	two-layer coverage 50 microns thick
Minimum roof slope	12°
Module efficiency	43W
Connectors	MC4

43W/m²



eTile classic PV4

eTile pv4 is a complementary variant, designed to complete installations where edge trimming is required. eTile PV4 can be used at the edge of the roof, next to dormers, or around skylights and chimneys.

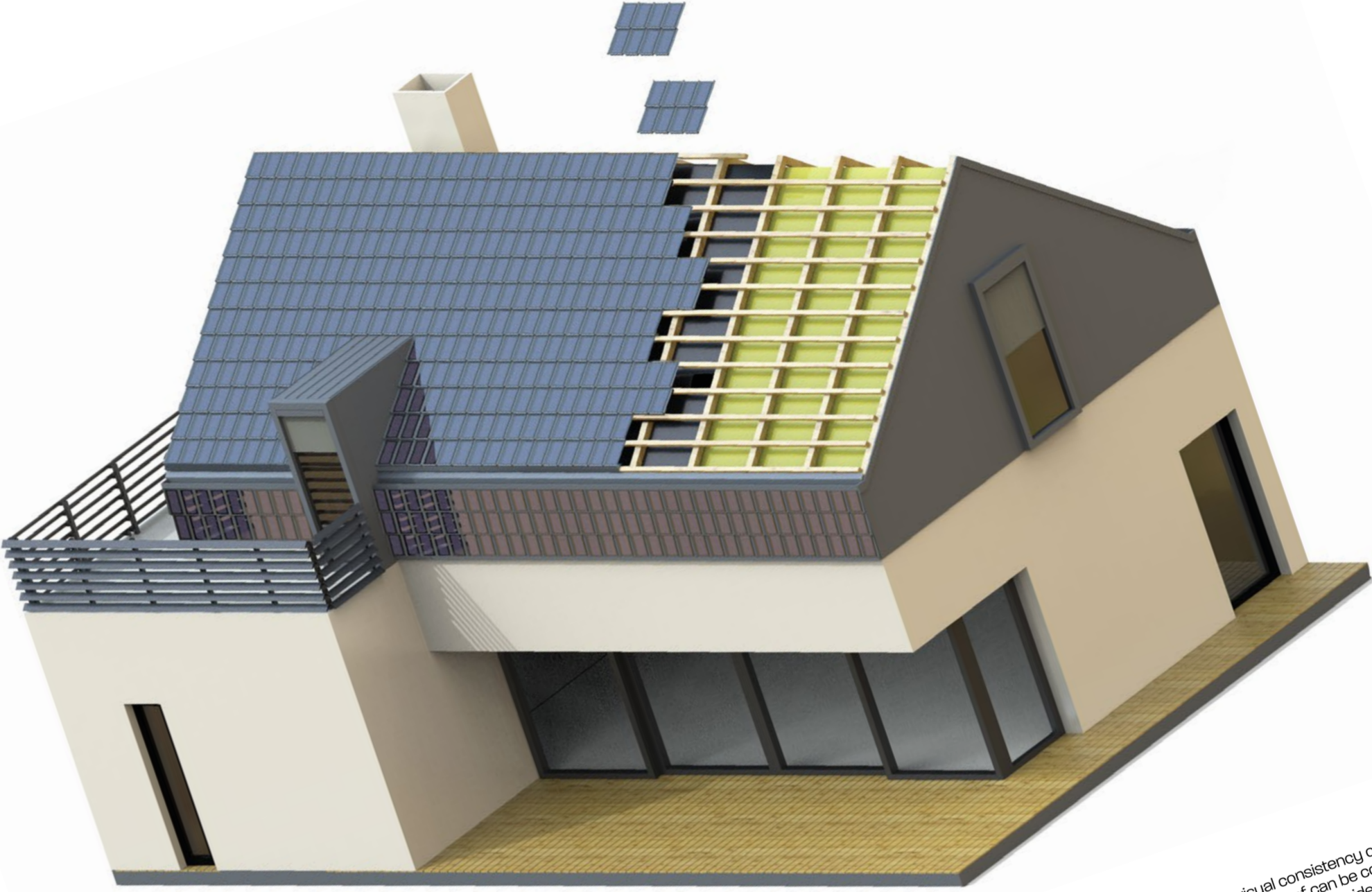
Height	820mm
Width	1190mm
Thickness	40mm
Material	Tapered glass based on metal sheet
Coverage	two-layer coverage 50 microns thick
Minimum roof slope	12°
Module efficiency	43W
Connectors	MC4

43W/m²



Built-in solar solution

Roof cover and PV panels in one!
Revolution in integrated photovoltaics.



Eco solution, reducing emissions, durable for years, easy to recycle.

Cover and PV panels in one - saving time and formalities during the construction or replacement of the roof.

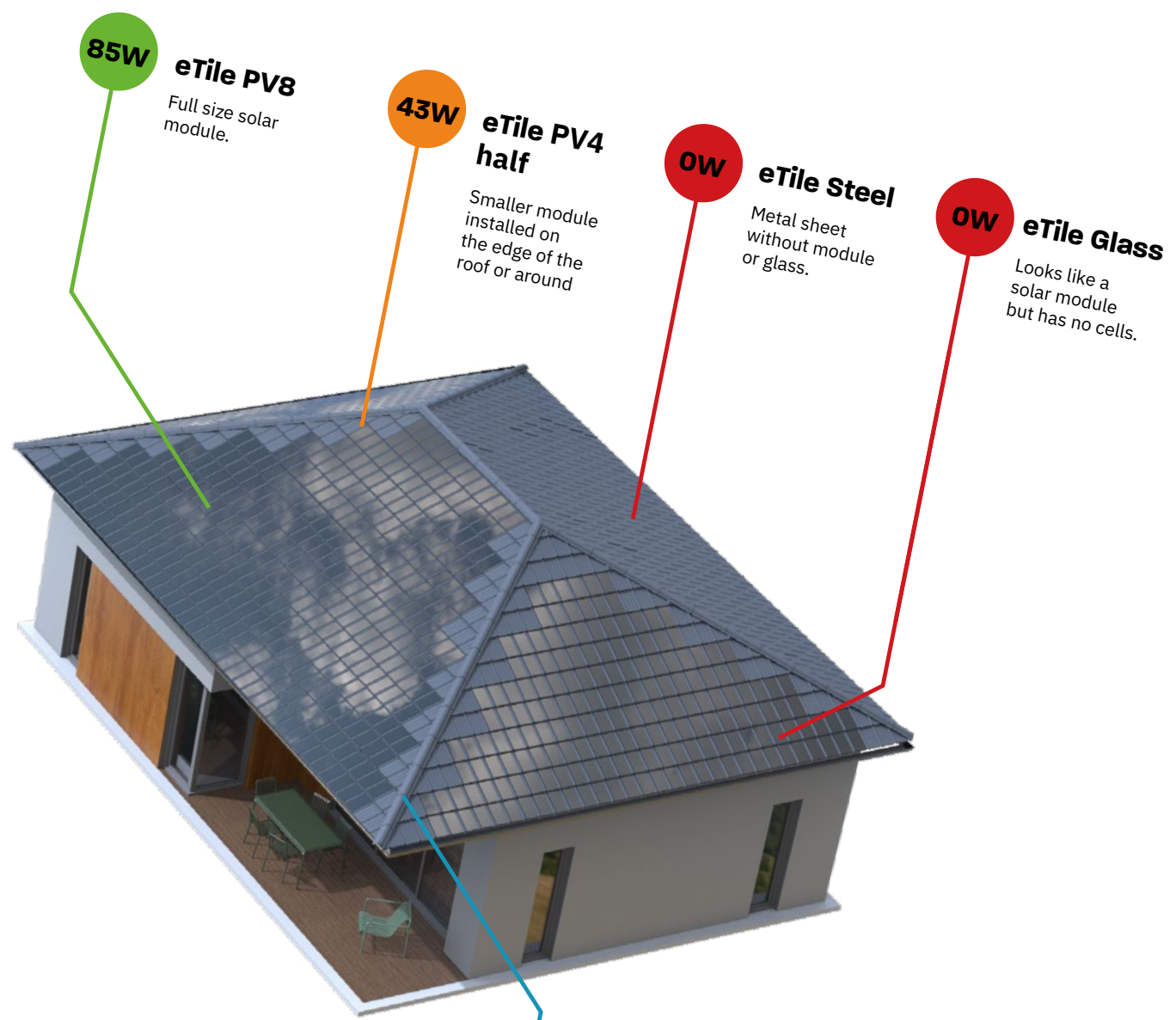
Easy to service thanks to the interchangeability of individual components.

Personalized service and many variants to choose from.

Possibility of installation on various types of buildings: tenement houses, apartment blocks, single-family houses.

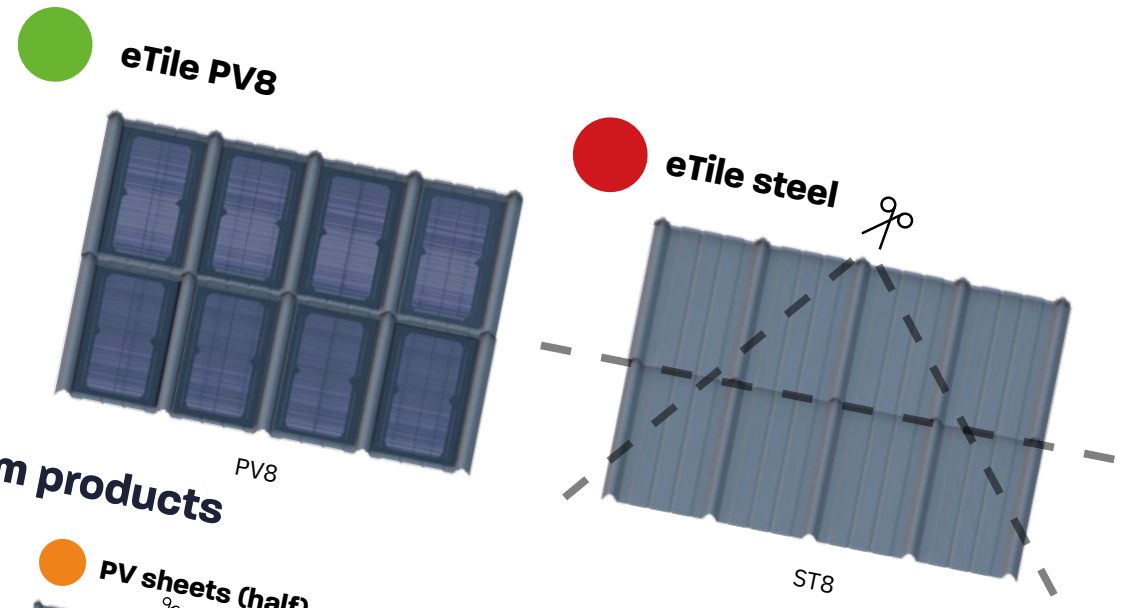
The visual consistency of the entire roof, the entire roof can be covered, including the east and west sides.

example of using eTile modules

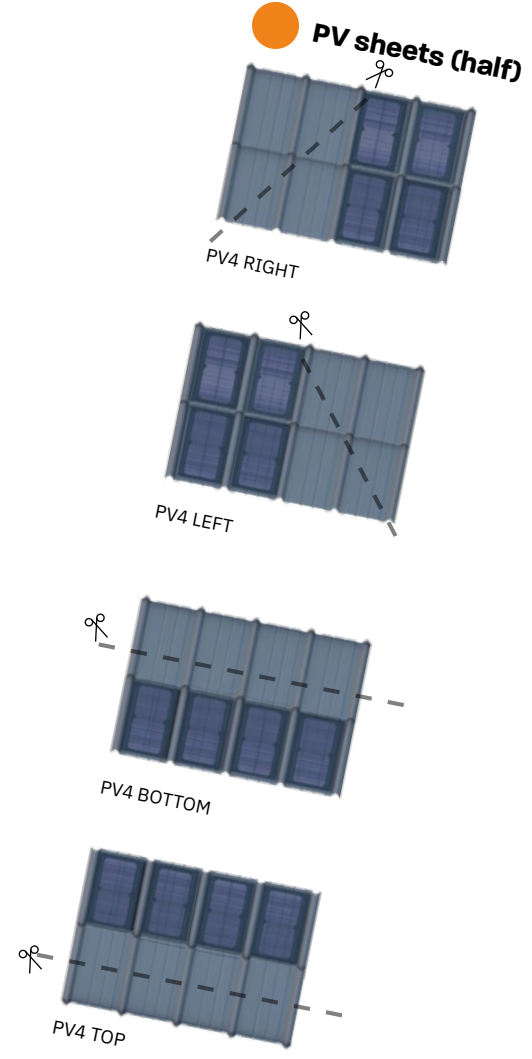


Finishings
Complements the roof for a consistent look.

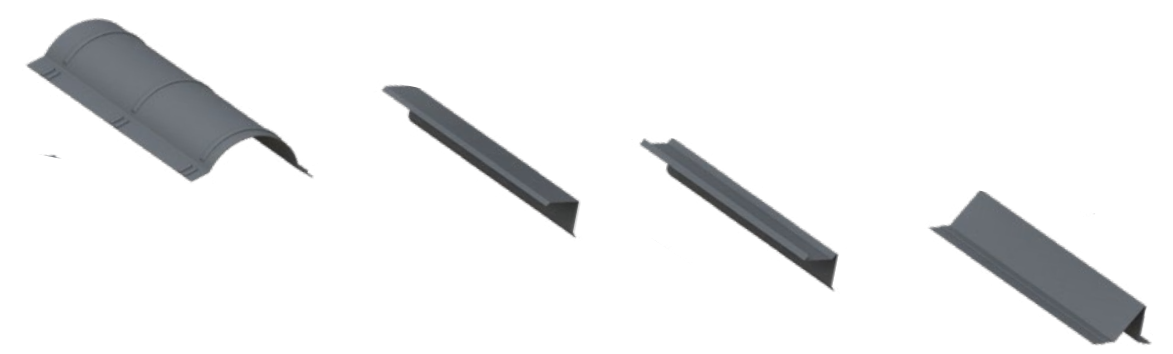
Standard offer



Custom products



Finishings

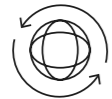


eTile Flat

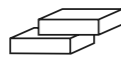
The eTile flat is a modular photovoltaic tile based on standing seam sheet. The minimalist and timeless design combined with high efficiency results in a versatile product. A single module is just over 2m



powered by the sun



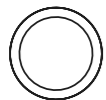
sustainable design



flat packaging



efficient



2 in 1



awarded many times



easy installation



on grid



eTile Flat

eTile flat is a basic full-height module. The 2100mm long panel is practically entirely covered with a photovoltaic module, making it very efficient. In addition, working with the module is easy due to its compact size. The panels have a special wrap at the end to allow watertight connection between each other.

Height	2100mm
Width	475mm
Thickness	30mm
Material	Tapered glass based on metal sheet
Coverage	two-layer coverage 50 microns thick
Minimum roof slope	5°
Module efficiency	130W
Connectors	MC4

130W/m²

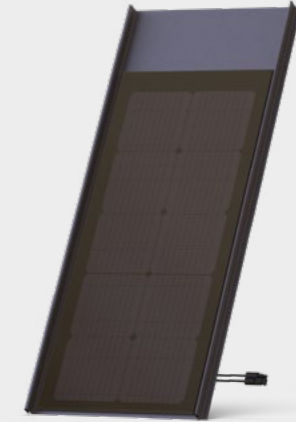


eTile Flat half

The eTile flat half is a smaller module exactly half the length of the eTile flat. It is useful at the bottom and top edge of the roof. It perfectly complements the roof and increases the generated yield wherever a large module would not fit.

Height	1100mm
Width	475mm
Thickness	30mm
Material	Tapered glass based on metal sheet
Coverage	two-layer coverage 50 microns thick
Minimum roof slope	5°
Module efficiency	130W
Connectors	MC4

60W/m²



eTile Flat steel

The eTile steel is a module without a photovoltaic panel that can be cut freely on site. It will fit into any space and can be freely combined with eTile Flat and eTile Flat half.

Height	2100mm
Width	475mm
Thickness	30mm
Material	metal sheet
Coverage	two-layer coverage 50 microns thick
Minimum roof slope	5°



Wide range of applications of eTile.

Single-family house



Modern villa



Tenements

Modern barn house



Building Renovations



eBLADE solar fence

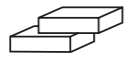
eBLADE photovoltaic fence is a sustainable and innovative solution for generating electricity and securing property boundaries. Photovoltaic fencing is an excellent alternative to standard photovoltaic solutions. It can be used wherever we do not have the possibility of installing photovoltaics on the roof or when we want to additionally increase the power of the home installation.



powered
by the sun



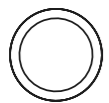
sustainable
design



flat
packaging



efficient



2 in 1



awarded
many
times



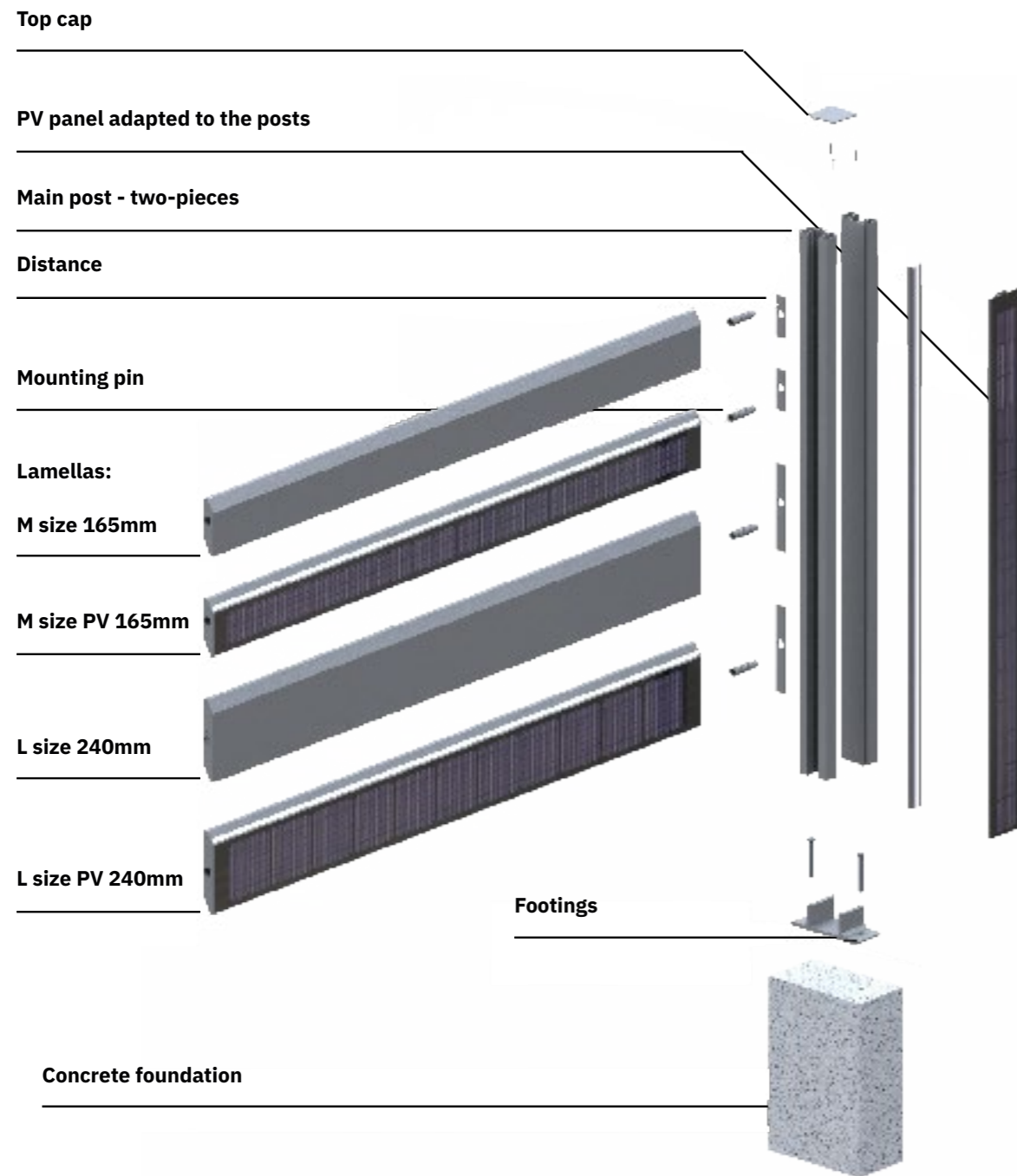
easy
installation



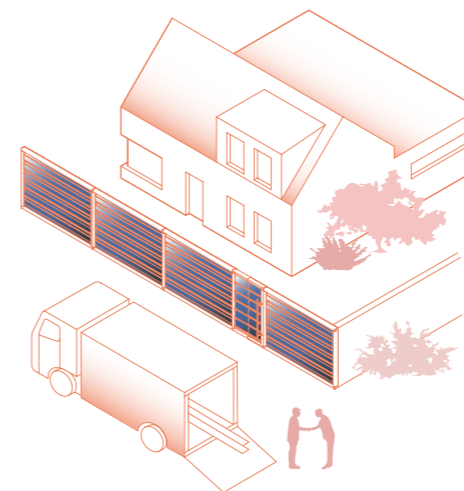
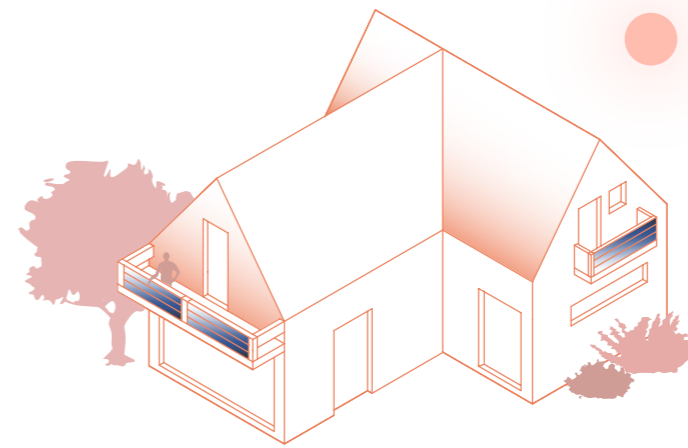
on grid



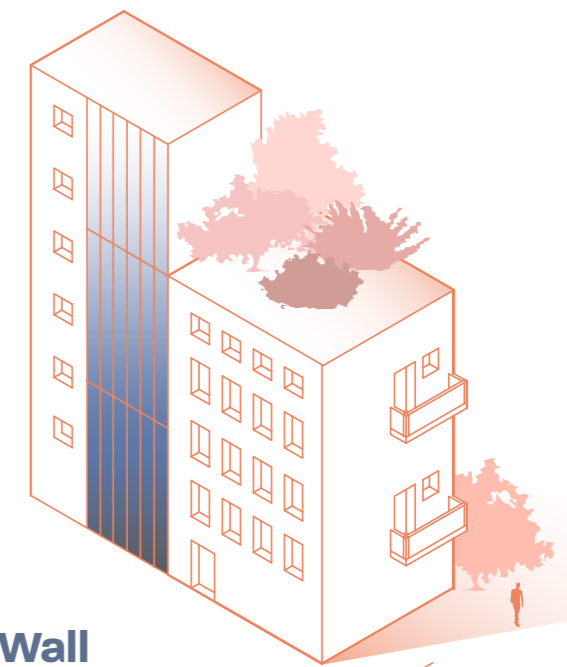
Fully integrated in aluminium system.



Solar balustrades



Solar fence



Solar Wall

Discover the endless
possibilities of the
eBLADE system.

eBLADE fence horizontal PV

Classic look with refined details. Fence slats are placed horizontally, parallel to each other, and attached to the fence posts.

Height	1600mm
Width	10mm
Material	Tapered glass based on aluminium frame
Module efficiency	210W
Connectors	MC4

210W

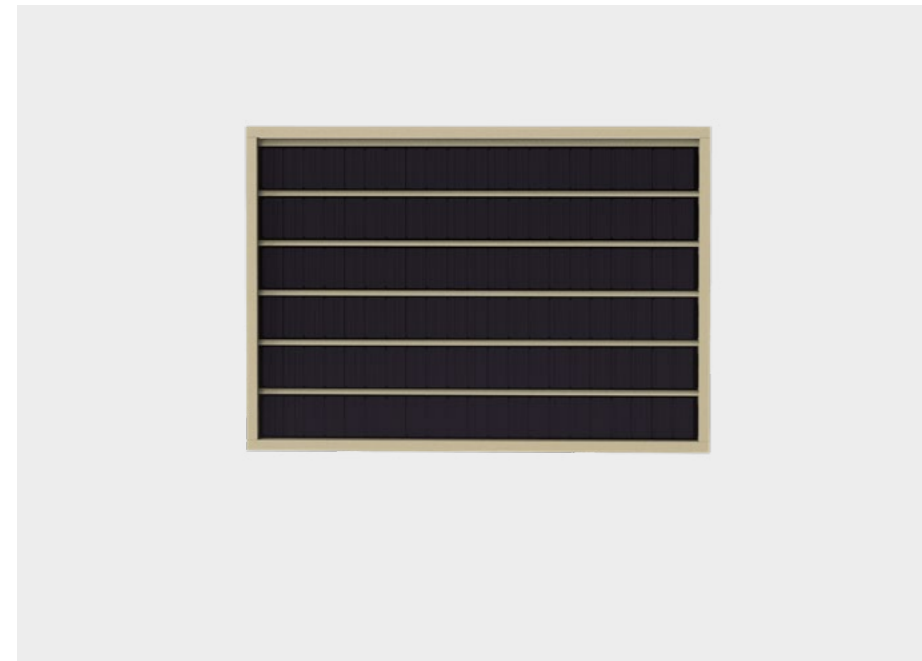


eBLADE fence horizontal

This type of fence design offers a high level of privacy and security. The lack of gaps or spaces between the slats means that it is difficult to see through the fence, making it an ideal choice for those seeking privacy.

Height	1600mm
Width	10mm
Material	Tapered glass based on aluminium frame
Module efficiency	40W
Connectors	MC4

40W



eBLADE fence discrete PV

This type of fence design offers a high level of privacy and security. The lack of gaps or spaces between the slats means that it is difficult to see through the fence, making it an ideal choice for those seeking privacy.

Height	1600mm
Width	10mm
Material	Tapered glass based on aluminium frame
Module efficiency	420W
Connectors	MC4

420W



eBLADE fence discrete

This type of fence design offers a high level of privacy and security. The lack of gaps or spaces between the slats means that it is difficult to see through the fence, making it an ideal choice for those seeking privacy.

Height	1600mm
Width	10mm
Material	Tapered glass based on aluminium frame
Module efficiency	70W
Connectors	MC4

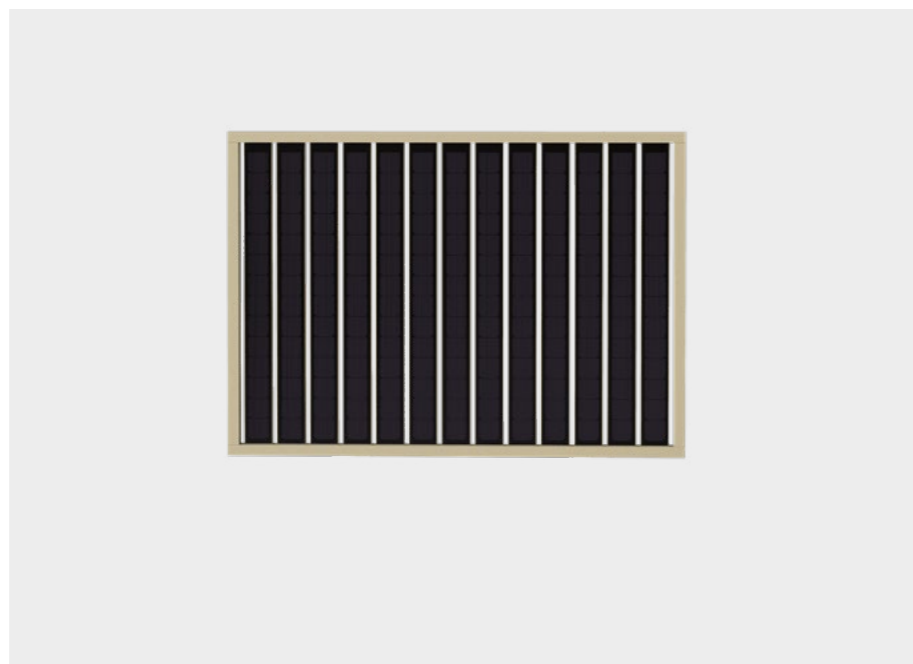
70W

eBLADE fence vertical PV

This type of fence design can provide This type of fence design is typically simple and clean, with a focus on minimalism and functionality.

Height	1600mm
Width	10mm
Material	Tapered glass based on aluminium frame
Module efficiency	280W
Connectors	MC4

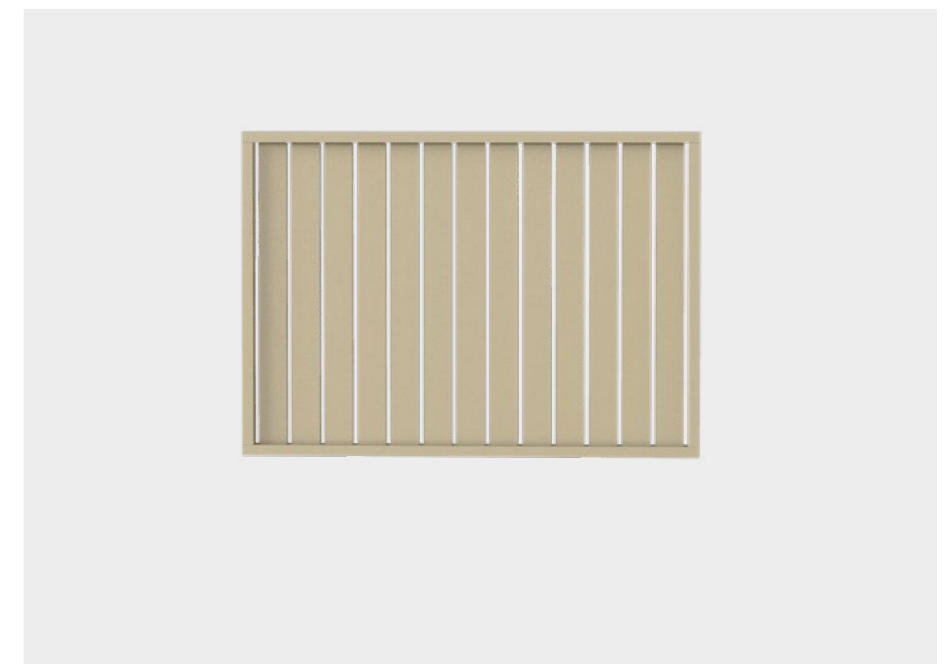
280W



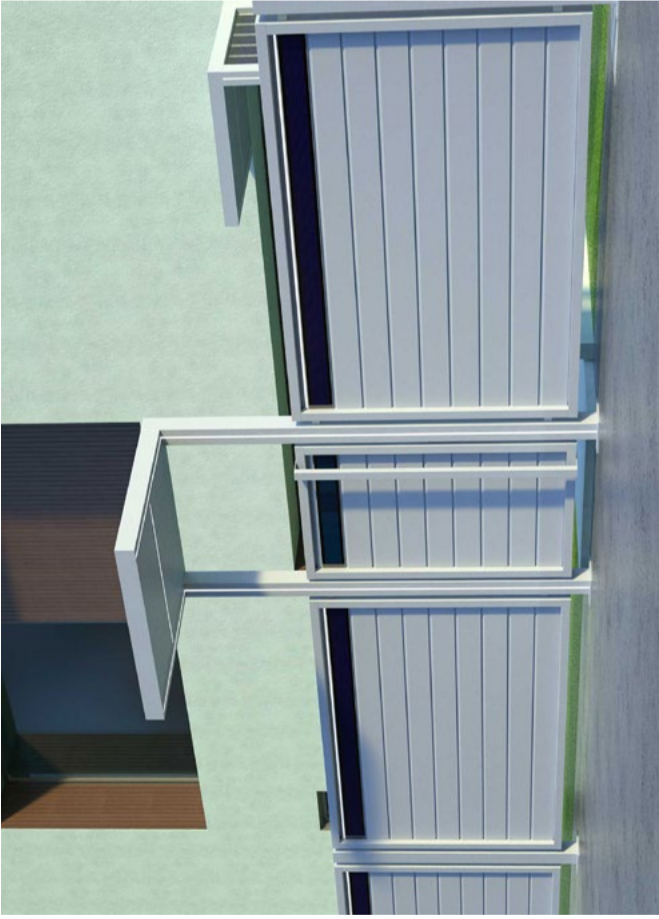
eBLADE fence vertical

This type of fence design can provide This type of fence design is typically simple and clean, with a focus on minimalism and functionality.

Height	1600mm
Width	10mm
Material	aluminium
Module efficiency	-



Additional Canopy



eBLADE smart post



ePARK modular carport to connect with fence



eBLADE canopy

Photovoltaic door canopy is a sustainable solution for both residential and commercial buildings. It can help reduce energy costs by generating clean energy, and they also provide a functional and stylish addition to the entrance of a building. The built-in photovoltaic panel allows you to power the lighting, video intercom and electric lock.

Height	220cm
Width	100cm
Length	100cm

eBLADE smart post

The smart post is a complementary solution to the eBlade fence. Using solar energy, the fence can be powered directly by photovoltaics providing features such as video intercom, lighting and remote opening. The system is smart home ready.

Height	160cm
Width	30cm
Length	20cm
Material	stainless steel & glass

ePARK aluminium carport

Envio ePARK carport with a photovoltaic roof is a sustainable solution that combines the benefits of solar power and carport technology to provide a valuable asset to homeowners and businesses alike.

Height	300cm
Width	360cm
Length	550cm
Material	aluminium & glass
Total power	4.5KW

eRAIL solar balustrade

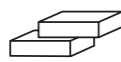
Photovoltaic balustrades eBLADE are a type of railing system with integrated photovoltaic panels which produce electricity from sunlight. eBLADE solar balustrades are made from aluminium, a lightweight and durable material that is resistant to corrosion. The PV cells in aluminium photovoltaic balustrades are embedded within the structure of the railing and are connected to a battery or grid-tied inverter system. The electricity generated by the PV cells can be used to power lights or other devices, or it can be fed back into the electrical grid.



powered
by the sun



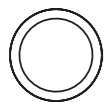
sustainable
design



flat
packaging



efficient



2 in 1



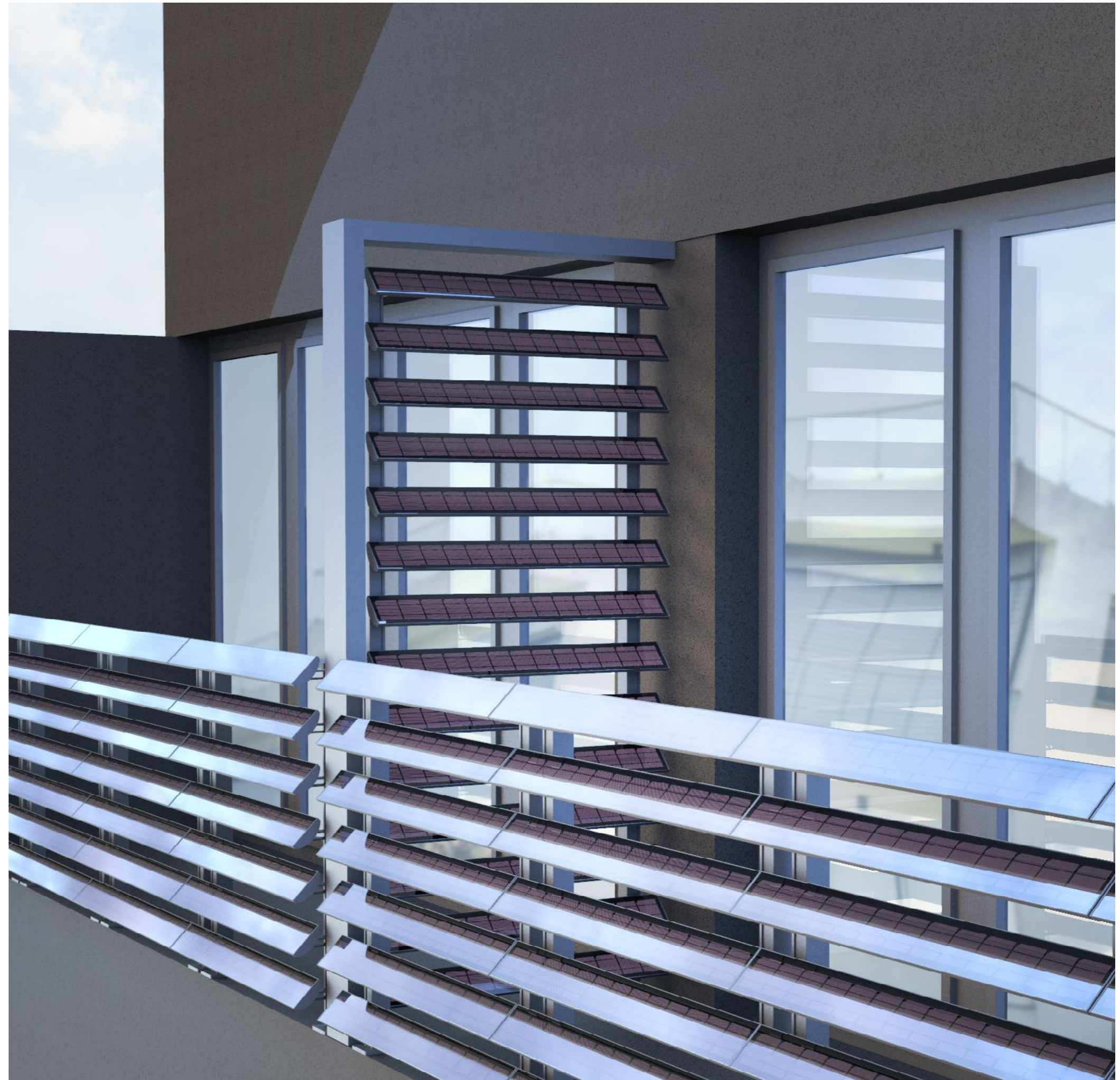
awarded
many
times



easy
installation



on grid



eRAIL solar balustrade

Photovoltaic balustrades eBLADE are a type of railing system with integrated photovoltaic panels which produce electricity from sunlight. eBLADE solar balustrades are made from aluminium, a lightweight and durable material that is resistant to corrosion. The PV cells in aluminium photovoltaic balustrades are embedded within the structure of the railing and are connected to a battery or grid-tied inverter system. The electricity generated by the PV cells can be used to power lights or other devices, or it can be fed back into the electrical grid.



eRAIL horizontal

Classic look with refined details. Balustrade slats are placed horizontally, parallel to each other, and attached to the fence posts.

Height	1600mm
Width	10mm
Material	Tapered glass based on aluminium frame
Module efficiency	90W
Connectors	MC4



eRAIL vertical

This type of balustrade design can provide simple and clean, with a focus on minimalism and functionality.

Height	1600mm
Width	10mm
Material	Tapered glass based on aluminium frame
Module efficiency	120W
Connectors	MC4



eRAIL discrete

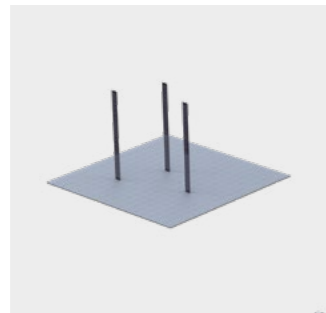
This type of balustrade design offers a high level of privacy and security. The lack of gaps or spaces between the slats means that it is difficult to see through the fence, making it an ideal choice for those seeking privacy.

Height	1600mm
Width	10mm
Material	Tapered glass based on aluminium frame
Module efficiency	160W
Connectors	MC4



eLIGHT solar lighting

Envio solar lighting offers incredible design possibilities with its mini-lite, elongated strips with LED strips. You can connect them together, configure them in any way you want, install them on the wall or on the ground and create surprising lighting effects that do not require wires.



eBLADE
lighting posts

vertical posts can be used in the garden or in the city as additional lighting. The integrated battery will power the LED strip and thanks to the twilight sensor, the lighting will turn on at the right moment.

Height	220cm
Width	25cm
Depth	45cm
Extras	LED lighting



eBLADE
wall lighting

Wall posts can be used in the garden or in the city as additional lighting. The integrated battery will power the LED strip and thanks to the twilight sensor, the lighting will turn on at the right moment.

Height	75cm
Width	230cm
Depth	105cm
Extras	LED lighting



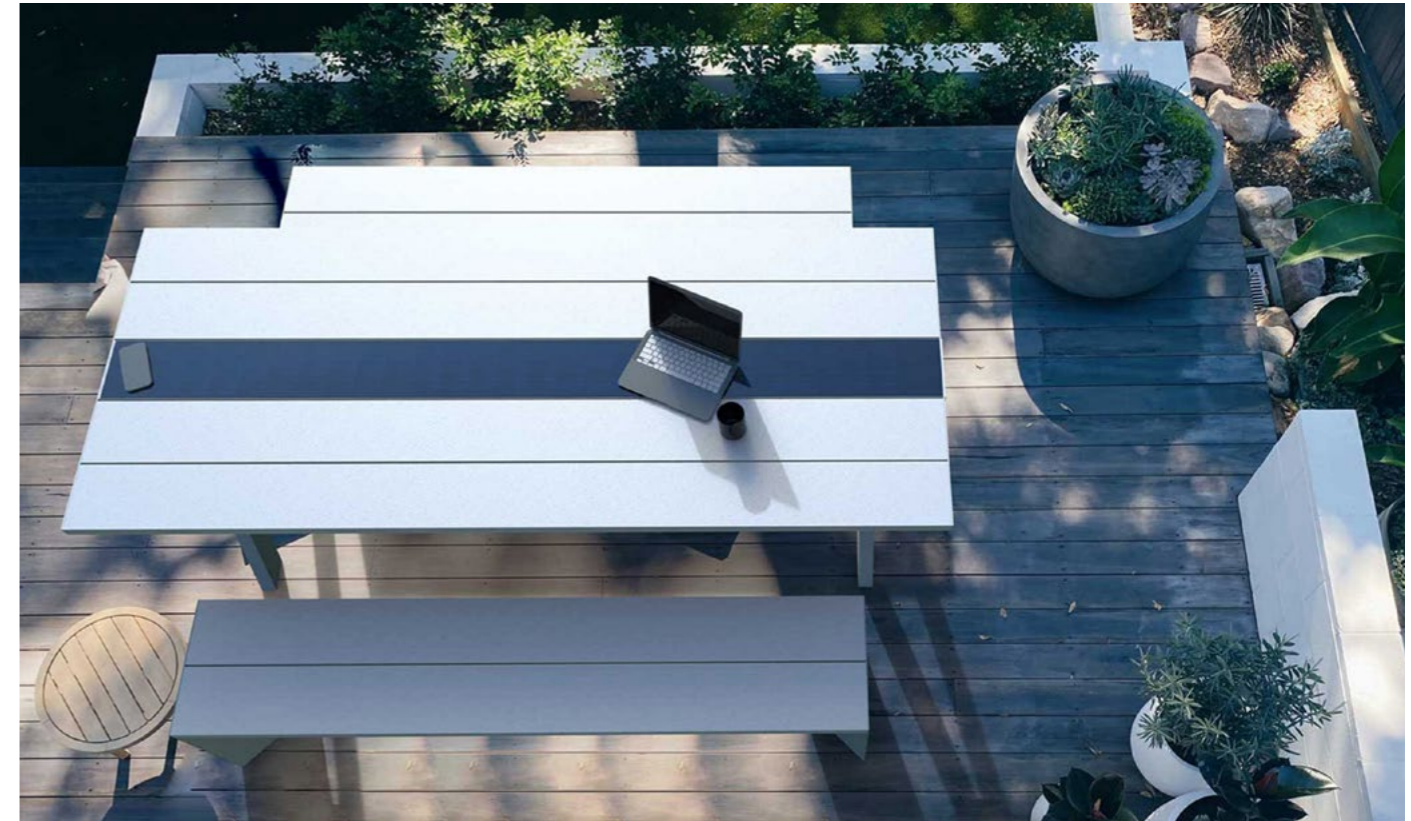
eBLADE
lighting divider

PV divider can be used in the garden or in the city as additional lighting. The integrated battery will power the LED strip and thanks to the twilight sensor, the lighting will turn on at the right moment.

Height	75cm
Width	230cm
Depth	105cm
Extras	LED lighting

eGARDEN solar garden furniture

Aluminium garden table with integrated photovoltaics is a stylish and practical addition to any outdoor space, providing both functional and environmental benefits. Envio garden tables are a great choice for eco-conscious homeowners who want to reduce their environmental impact and save money on energy costs. They can be used in a variety of outdoor settings, from patios and decks to gardens and poolside areas. They are also durable and weather-resistant, making them a practical choice for outdoor use.



eTABLE
A model

The classic and simple look of the table makes it a perfect match for private and commercial buildings.

Height	75cm
Width	230cm
Depth	105cm
Extras	Wireless charging



eTABLE
A picnic set

The vertical arrangement of the slats will make the panels better cover us at an angle.

Height	75cm
Width	230cm
Depth	155cm
Extras	Wireless charging



eTABLE
I model

The type I table is a table with a built-in photovoltaic panel on top. The tabletop is fully functional and the frame additionally illuminates the surface.

Height	175cm
Width	230cm
Depth	105cm
Extras	Wireless charging



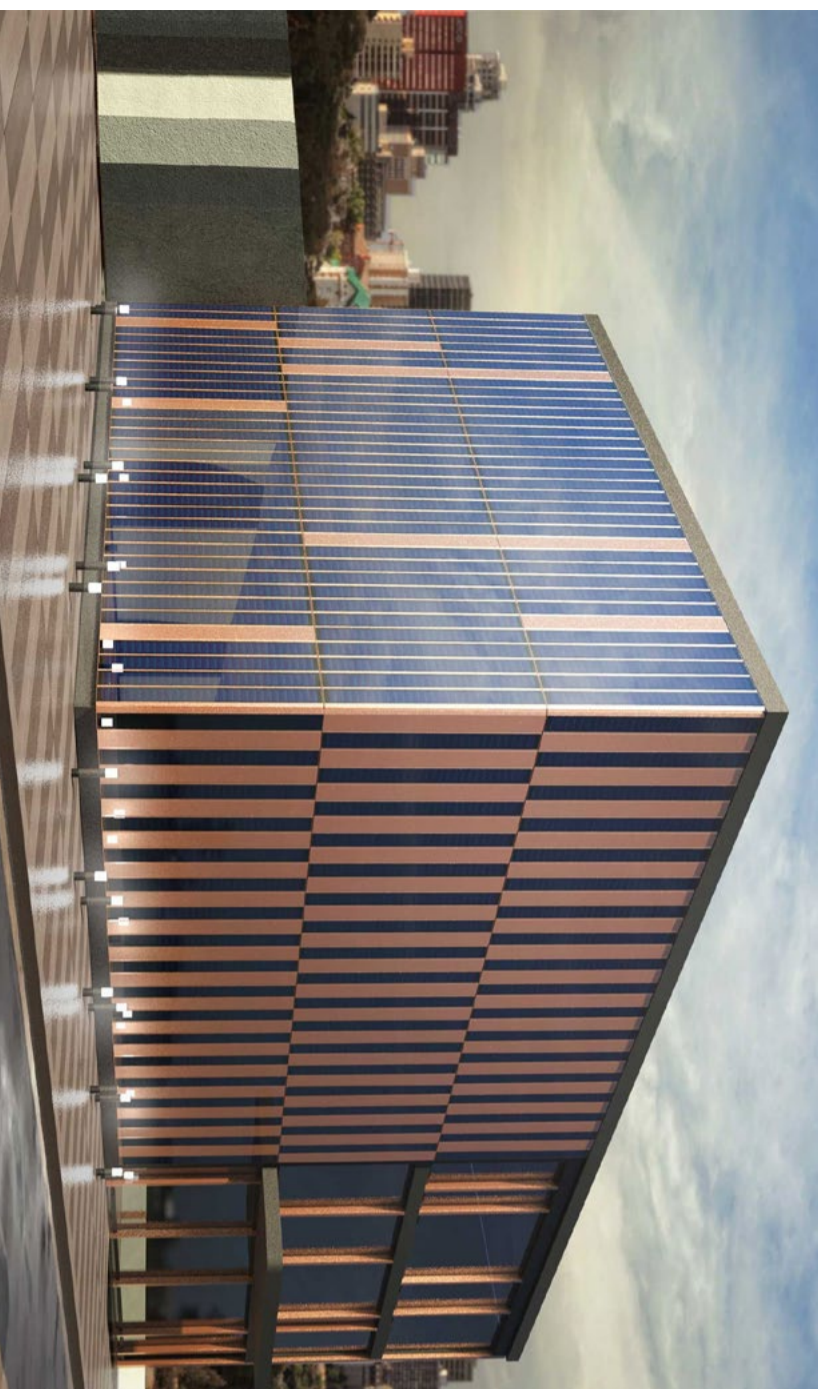
eTABLE
low

The classic and simple look of the table makes it a perfect match for private and commercial buildings.

Height	45cm
Width	230cm
Depth	105cm
Extras	Wireless charging

eWALL solar walls

Photovoltaic aluminium wall systems are a sustainable solution for buildings that want to incorporate solar energy into their design without sacrificing aesthetics. They provide a sleek and modern look while also generating clean energy, which can help reduce energy costs and carbon emissions. Additionally, they can help regulate the temperature of the building, which can lead to lower heating and cooling costs.



eWALL
M size panels

A 2-in-1 solution that combines the function of aluminum wall cladding and photovoltaic panels.

Height	2000mm
Width	1000mm
Depth	100mm
Efficiency	210W/m ²



eWALL
L size panels

A 2-in-1 solution that combines the function of aluminum wall cladding and photovoltaic panels.

Height	2000mm
Width	1000mm
Depth	100mm
Efficiency	210W/m ²



eWALL
Mixed size panels

A 2-in-1 solution that combines the function of aluminum wall cladding and photovoltaic panels.

Height	2000mm
Width	1000mm
Depth	100mm
Efficiency	210W/m ²

eSHADE solar window shutters

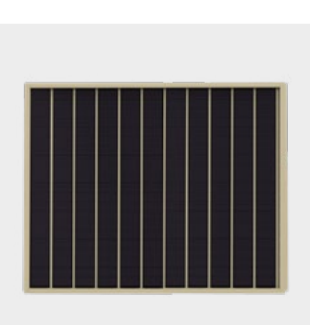
eSHADE – a photovoltaic window shutter with integrated photovoltaic panels which generates electricity while also blocking sunlight. eSHADE shutters are can be installed on windows, walls. The angle of lamellas can be adjusted to control the amount of light entering the building.



eSHADE
M size panels

A 2-in-1 solution that combines the function of window blinds and photovoltaic facade.

Height	2000mm
Width	1000mm
Depth	100mm
Efficiency	100W/m ²



eSHADE
L size panels

A 2-in-1 solution that combines the function of window blinds and photovoltaic facade.

Height	2000mm
Width	1000mm
Depth	100mm
Efficiency	180W/m ²



eSHADE
Vertical m size panels

A 2-in-1 solution that combines the function of window blinds and photovoltaic facade.









Height	2000mm
Width	1000mm
Depth	100mm
Efficiency	180W/m ²

Pergola solar

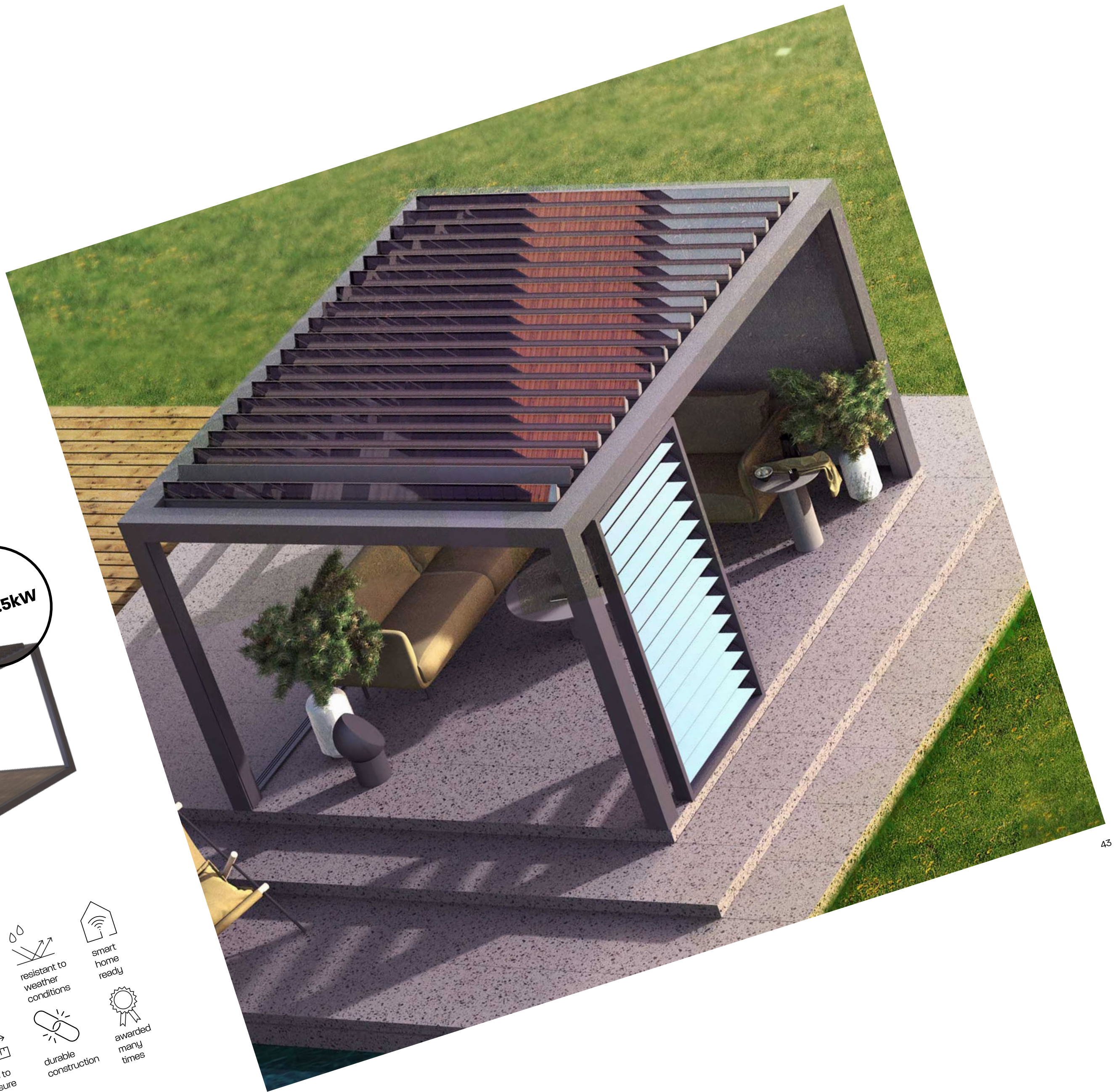
The Solar Pergola is one of the most advanced solutions on the market. The world's first pergola with integrated photovoltaic panels in the roof lamellas, it can produce up to 1.5kW of energy to power additional functionalities such as automatic blinds, speakers, IR heater or serve as a charging socket for mobile devices. The Solar Pergola is also a great extension for a home photovoltaic installation. By installing a solar pergola, you can significantly reduce your electricity bills.

up to 1.5kW



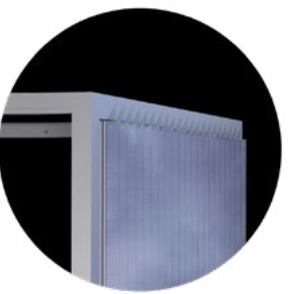
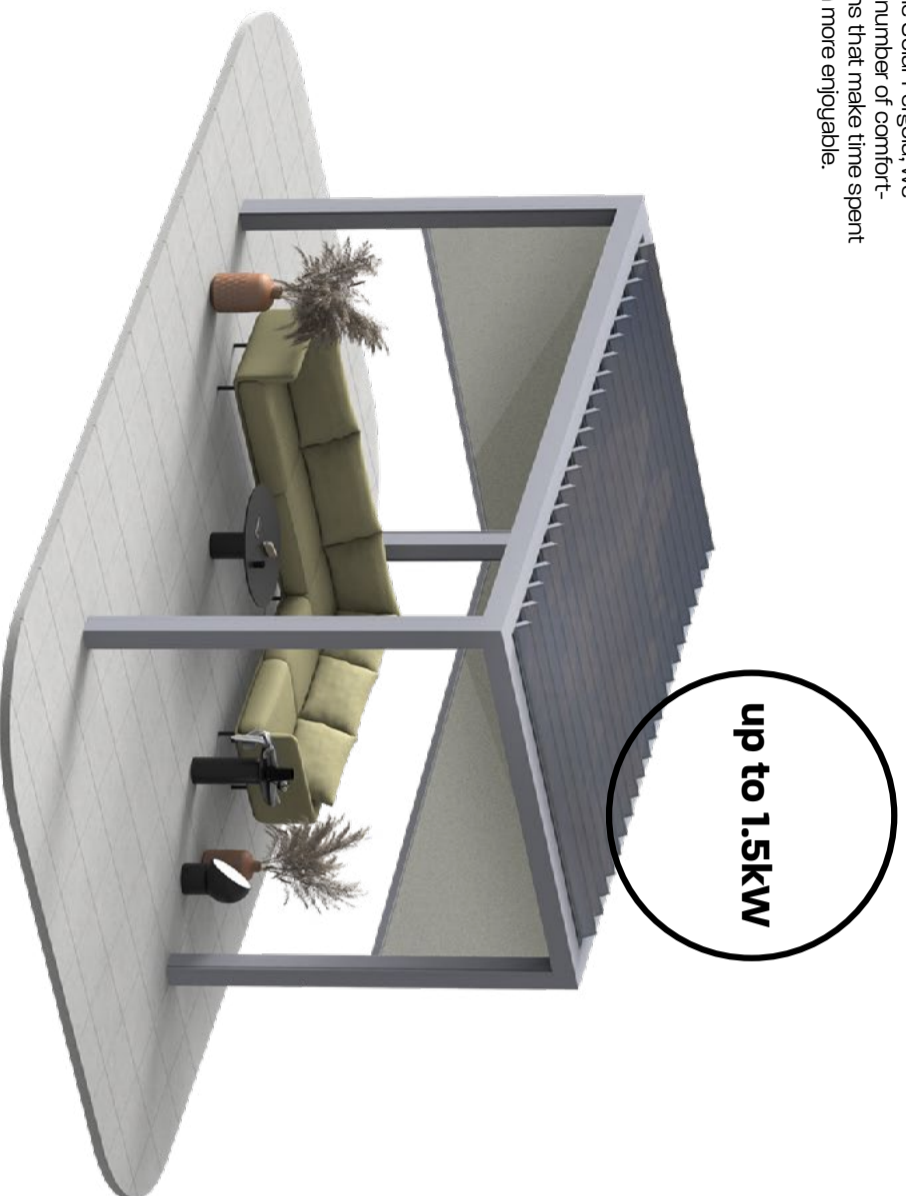
-  powered by the sun
-  sustainable design
-  resistant to weather conditions
-  smart home ready
-  wind resistant
-  made to measure
-  durable construction
-  awarded many times

solarbreaker

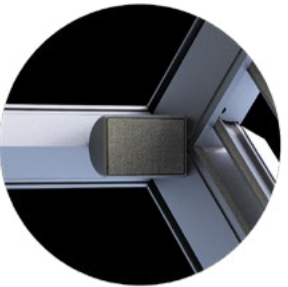


Pergola Solar

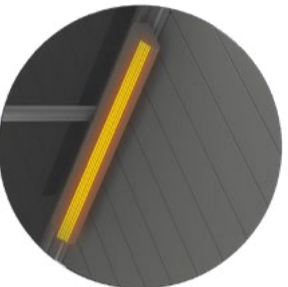
When designing the Solar Pergola, we equipped it with a number of comfort-enhancing solutions that make time spent in the garden even more enjoyable.



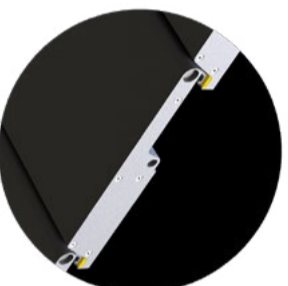
Integrated PV panels



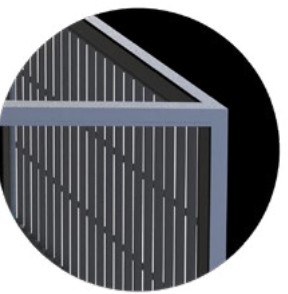
Integrated speakers



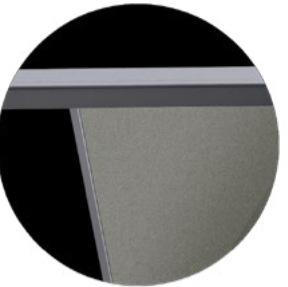
Integrated IR heater



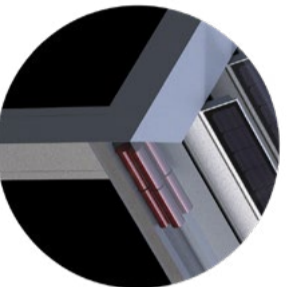
Sealed lamellas



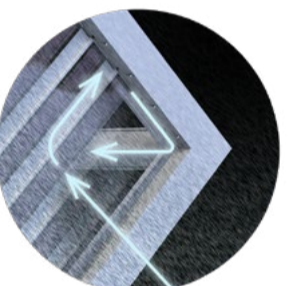
Integrated LED lightings



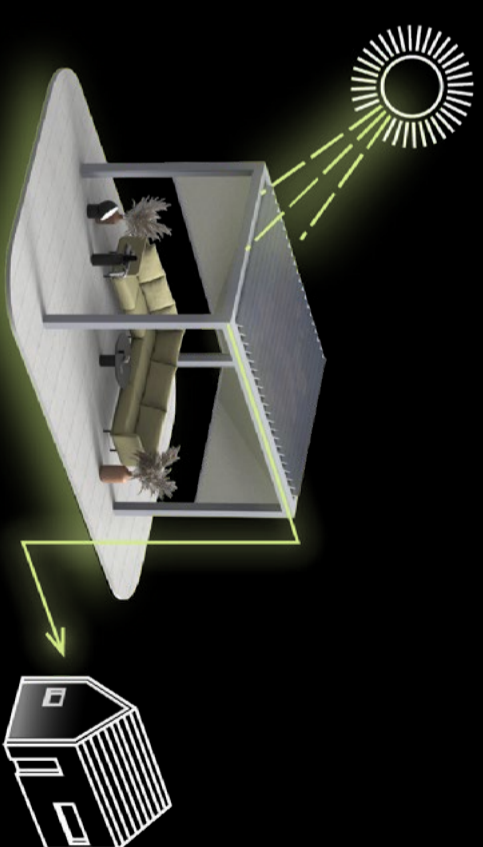
Integrated ZIP screens



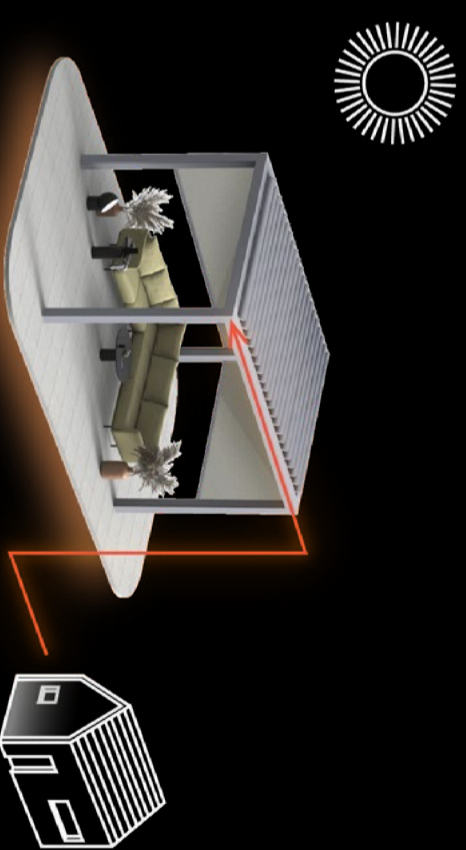
Integrated batteries



Drainage system

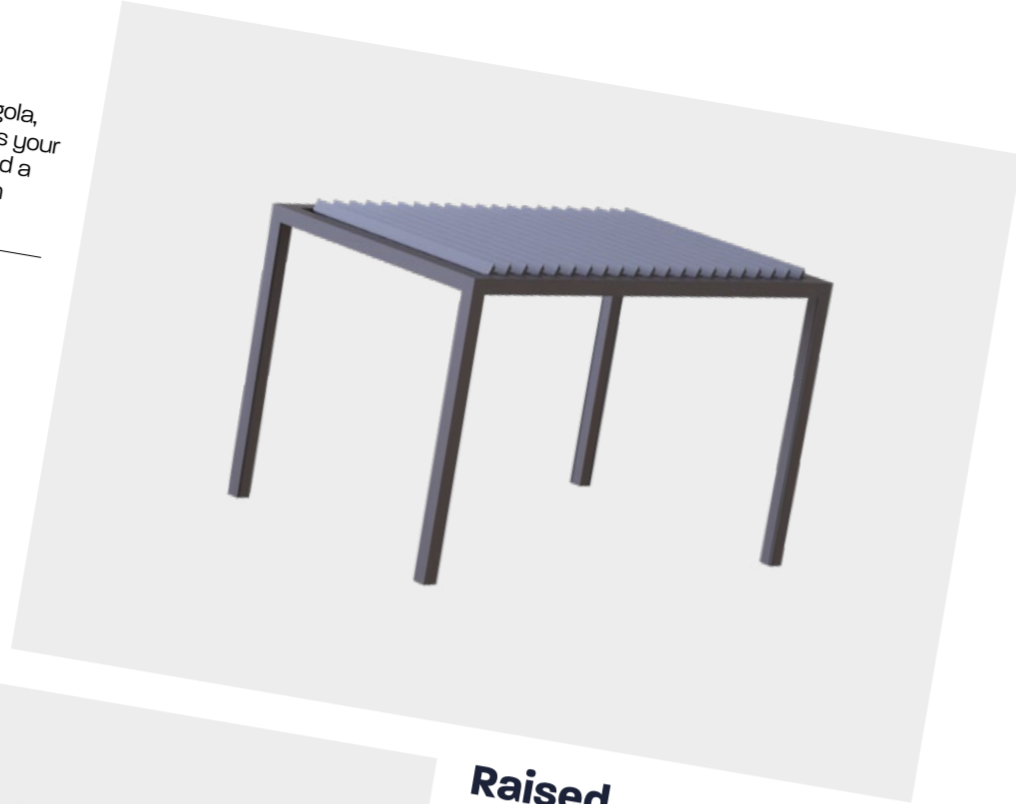


The solar pergola, unlike standard solutions, produces energy using the entire surface of the roof and also optional side shades. The energy can be used off-grid for its own



Standard Roof

Our flagship product is the solar pergola, however, we do not limit the choice. Is your garden heavily shaded or do you need a standard pergola? You can choose an aluminum roof.



Photovoltaic roof

Photovoltaic roof laths are the biggest advantage of our pergola. They can produce enough energy to power all functions and in addition, they give an amazing look of reflective glass.



Raised floor

The raised floor nicely accentuates the seating area under the pergola. In addition, it insulates the lawn, hides the foundation and adds a warm character. Choose between natural or composite boards as a complement.



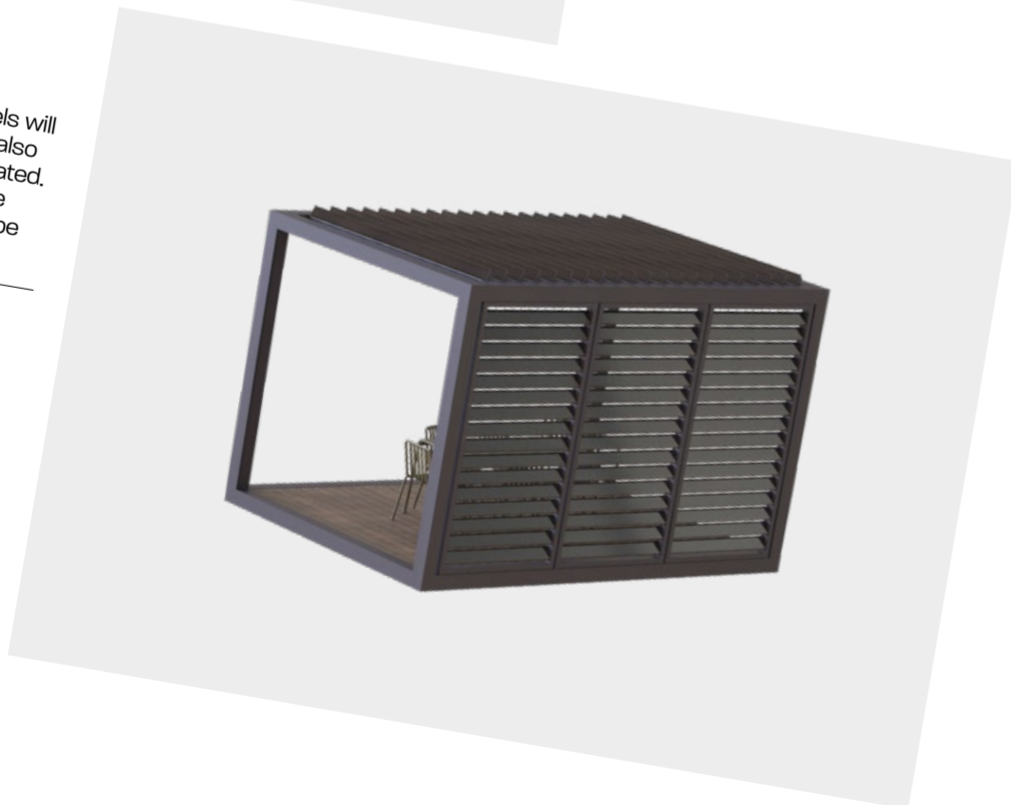
Photovoltaic walls

A side screen with photovoltaic panels will not only shield you from the sun but also increase the amount of energy generated. You can choose any length of the side screen and the sides on which it is to be installed.



ZIP Screen wall

Zip screens perfectly integrated into the arms of the pergola are our hallmark. The fabric wall can open and close whenever you want to regulate the degree of sunlight inside. You can choose the color of the fabric and the degree of transparency.



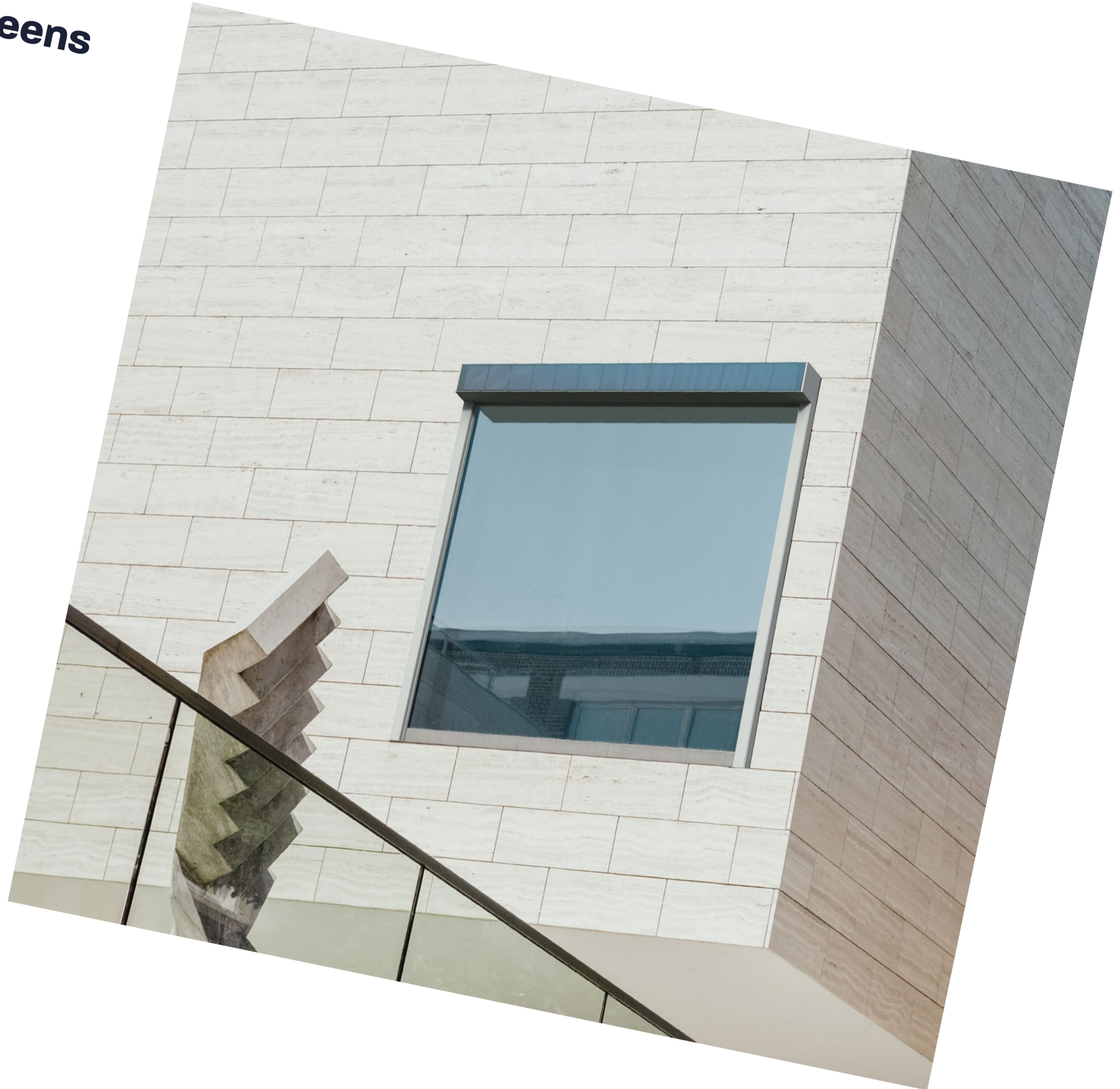
Wooden slats wall






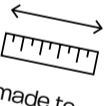


A fixed wall of wooden slats will add warmth and shield from the sun. You can choose any width of the wooden screen and decide on which walls it should be installed.



ZIP Pro Solar solar zip screens

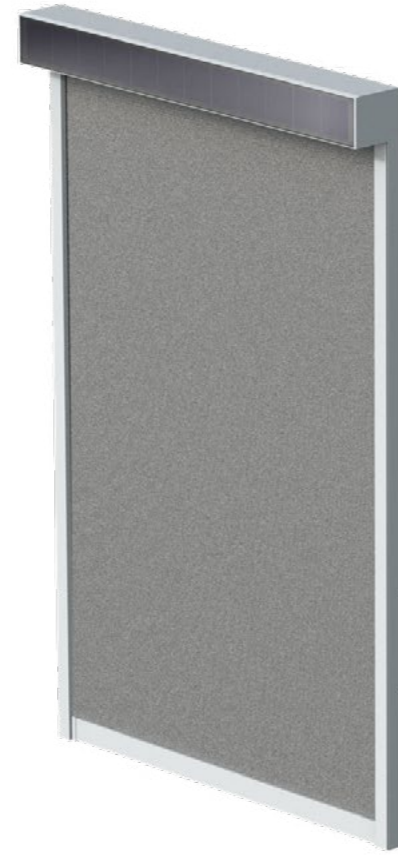
ZIP SOLAR is the most advanced shutter solution in our offer. It uses a photovoltaic panel across the entire width of the cassette for power supply. The integrated battery bank allows for trouble-free motor operation, even in cloudy weather. It does not require a power connection, so its installation on the window takes only a few minutes. The ZIP SOLAR system is based on the ZIP PRO system and offers all its advantages.



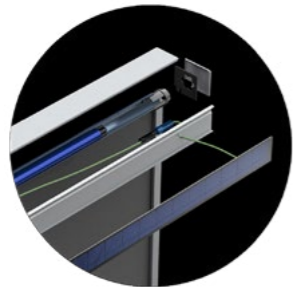
-  powered by the sun
-  sustainable design
-  resistant to weather conditions
-  smart home ready
-  wind resistant
-  made to measure
-  durable construction
-  awarded many times

ZIP Pro Solar

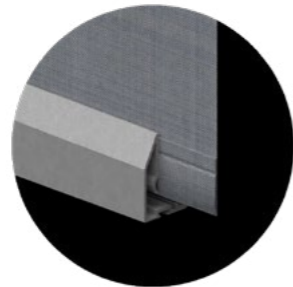
ZIP SOLAR is the most advanced shutter solution in our offer. It uses a photovoltaic panel across the entire width of the cassette for power supply. The integrated battery bank allows for trouble-free motor operation, even in cloudy weather. It does not require a power connection, so its installation on the window takes only a few minutes. The ZIP SOLAR system is based on the ZIP PRO system and offers all its advantages.



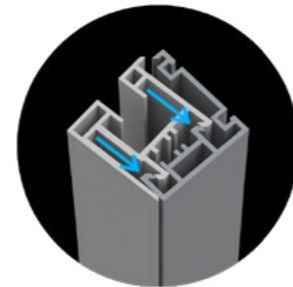
Integrated PV panel



Hidden battery



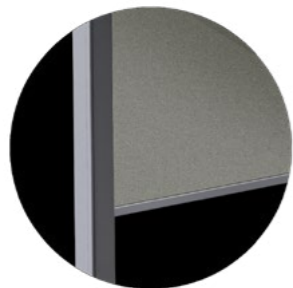
Hidden weldings



Click-on system



Any RAL color



No visible screws

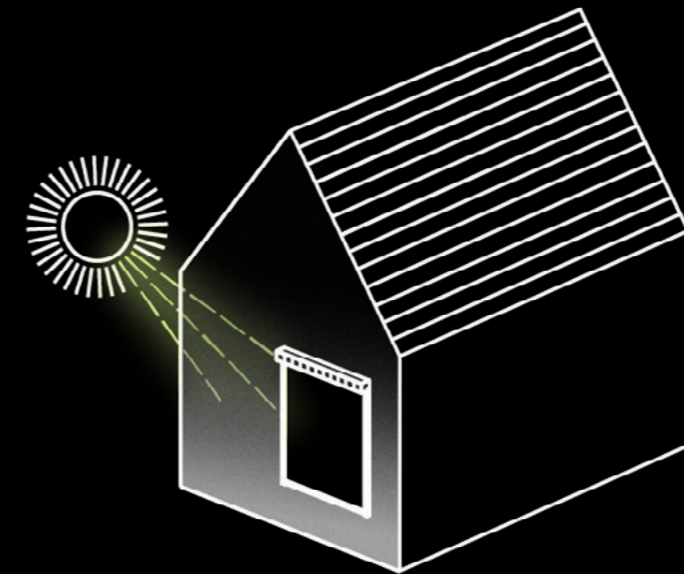


Universal components



Perfectly flat

ZIP Pro Solar

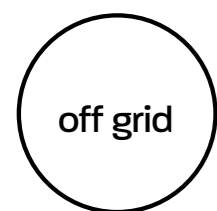


Easy installation without the need to drill holes. ZIP pro Solar only requires embedding in a window recess or on the façade without any work inside the



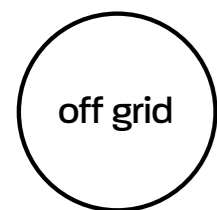
ZIP Pro Solar

ZIP SOLAR is the most advanced shutter solution in our offer. It uses a photovoltaic panel across the entire width of the cassette for power supply. The integrated battery bank allows for trouble-free motor operation, even in cloudy weather. It does not require a power connection, so its easy to install.



ZIP Pro Solar Color

Is nothing more than zip solar further modified with tinted glass. Thus, the colored zip can be perfectly color-matched to the window frame or the color of the facade.



ZIP Pro Alu

ZIP PRO is the most advanced ZIP system in our offer. It uses aluminum inlay technology, thanks to which the fabrics are always taut and stay in place even in strong winds. All elements of the system are made of aluminum, even the end caps of the bottom bar and side guides - so we can deliver them in the same color as the rest of the system. The fasteners are made of stainless steel, but thanks to special solutions, they are invisible to the user. In ZIP PRO we used a double side guide, which facilitates assembly and is more aesthetic.



ZIP Pro Inbouw

The ZIP PRO F-M is based on the ZIP PRO system, using the same components, and additionally offering a cassette box with access from the bottom. This makes it ideal for flush-mounted installations. The system of removing the pipe with the wound material facilitates assembly and service of the ZIP PRO F-M. When the material is rolled up, the bottom rail is completely hidden in the cassette, thanks to which it creates an aesthetic whole with it. Its well-thought-out design additionally means that no welds on the fabric are visible.

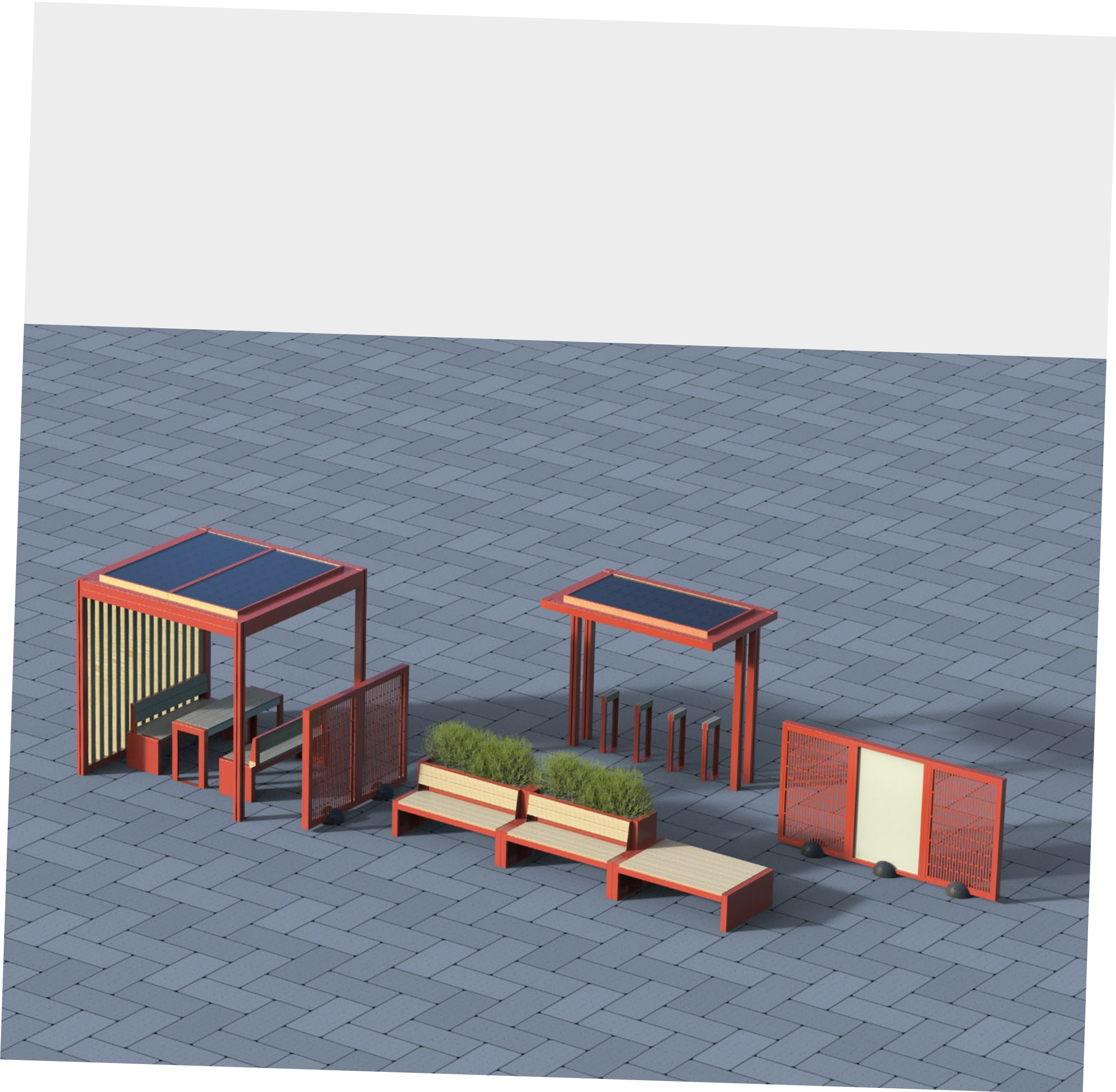


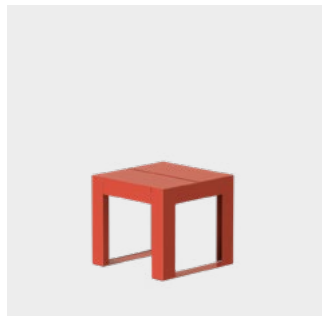
URBAN-e smart city furniture

Envio Urban Furniture is a modern solution with integrated photovoltaics dedicated to cities, developers, hotels and restaurants. We offer a range of products with photovoltaic panels to power functions such as lighting, USB charging, inductive charging, dusk and motion sensors. Our products are not only good design, but also useful functionalities that make city life easier for residents.



0.9kW

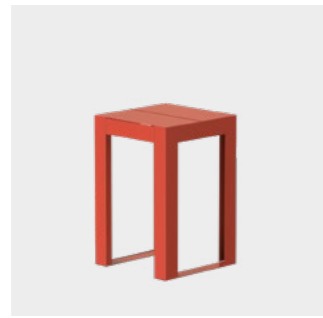




Urban-e
small table

A simple and functional table that can be anchored to the ground.

Height	45cm
Width	45cm
Depth	45cm
Material	Stainless steel



Urban-e
small table high

Higher version of a simple and functional table that can be anchored to the ground.

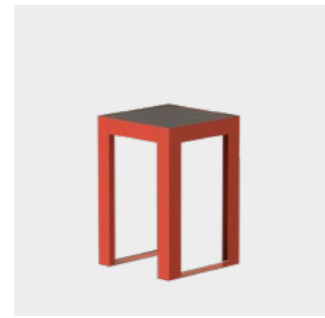
Height	75cm
Width	45cm
Depth	45cm
Material	Stainless steel



Urban-e
small table high

Photovoltaic version of a simple and functional table that can be anchored to the ground.

Height	45cm
Width	45cm
Depth	45cm
Material	Stainless steel



Urban-e
small table high

High photovoltaic version of a simple and functional table that can be anchored to the ground.

Height	75cm
Width	45cm
Depth	45cm
Material	Stainless steel



Eco City PV
bench 160

Height	45cm
Height total	55cm
Width	160cm
Depth	50cm
Material	Stainless steel
Extras	USB charging



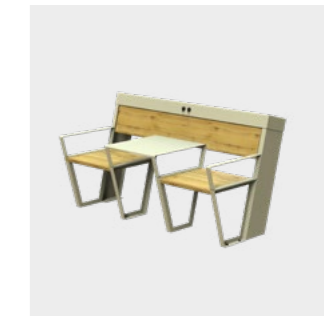
Eco City PV
bench 160 + backrest

Height	45cm
Height total	80cm
Width	120cm
Depth	50cm
Material	Stainless steel
Extras	USB charging



Eco City PV
bench 160 + backrest

Height	45cm
Height total	80cm
Width	120cm
Depth	50cm
Material	Stainless steel
Extras	USB charging



Eco City PV
bench 160 + backrest

Height	45cm
Height total	80cm
Width	120cm
Depth	50cm
Material	Stainless steel
Extras	USB charging



Urban-e
low bench 30

A simple and functional low version of bench made from steel.

Height	30cm
Width	120cm
Depth	60cm
Material	Stainless steel



Urban-e
bench 45

Medium high version of bench made from steel.

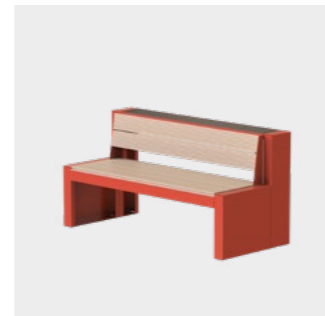
Height	45cm
Width	120cm
Depth	60cm
Material	Stainless steel



Urban-e
bench 45 + backrest

Medium high version of bench made from steel with backrest.

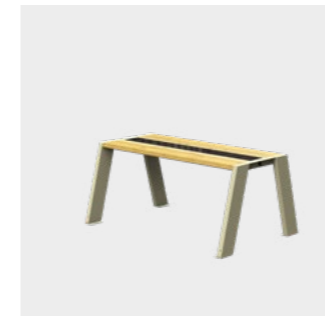
Height	45cm
Height total	80cm
Width	120cm
Depth	50cm
Material	Stainless steel



Urban-e
bench 45 + PV backrest

Medium high version of bench made from steel with backrest and photovoltaic panel.

Height	45cm
Height total	80cm
Width	120cm
Depth	50cm
Material	Stainless steel
Extras	USB charging



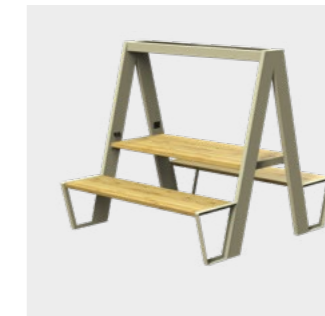
Eco City PV
solar Table

Height	45cm
Height total	80cm
Width	120cm
Depth	50cm
Material	Stainless steel



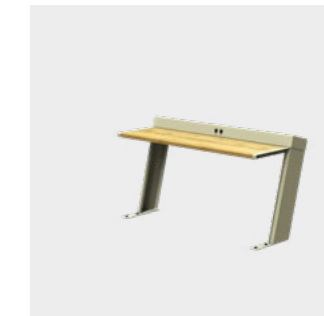
Eco City PV
picnic table

Height	45cm
Height total	80cm
Width	120cm
Depth	50cm
Material	Stainless steel
Extras	USB charging



Eco City PV
picnic table high

Height	185cm
Width	160cm
Depth	160cm
Material	Stainless steel
Extras	USB charging



Eco City PV
workspace

Height	75cm
Height total	85cm
Width	160cm
Depth	70cm
Material	Stainless steel
Extras	USB charging



Urban-e
pavilion PV

A functional city pavilion for relaxation. Equipped with benches, flowerbeds and lighting.

Height	240cm
Width	240cm
Depth	240cm
Material	Aluminium
Extras	900W PV panels lighting / planters / benches /



Urban-e
E-bike shelter

The canopy, along with bike racks and a photovoltaic installation, is a perfect solution for electric bicycles.

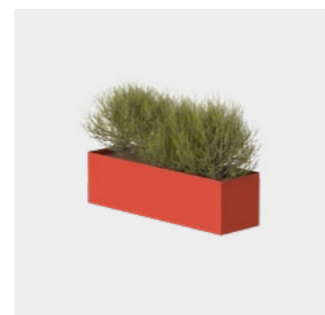
Height	240cm
Width	240cm
Depth	160cm
Material	Aluminium
Extras	450W PV panels



Urban-e
bench 45 + backrest

Medium high version of bench made from steel with backrest.

Height	45cm
Height total	80cm
Width	120cm
Depth	50cm



Urban-e
bench 45 + PV backrest

Medium high version of bench made from steel with backrest and photovoltaic panel.

Height	45cm
Height total	80cm
Width	120cm
Depth	50cm
Extras	USB charging



Eco City PV
deckchair

Height	45cm
Height total	85cm
Width	100cm
Depth	220cm
Material	Stainless steel
Extras	USB charging



Eco City PV
deckchair double

Height	45cm
Height total	85cm
Width	160cm
Depth	220cm
Material	Stainless steel
Extras	USB charging



Eco City PV
half seater

Height	75cm
Height total	85cm
Width	160cm
Depth	60cm
Material	Stainless steel
Extras	USB charging



Eco City PV
bikerack

Height	75cm
Height total	85cm
Width	160cm
Depth	70cm
Material	Stainless steel
Extras	USB charging

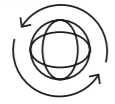
Addsolis solar carport premium

Our latest solution that meets the needs of the most demanding customers. Carport addsolis allows you to adjust the angle of the roof at the installation stage - this allows you to adjust the optimal angle to the sunlight for your location or choose the angle according to your visual preferences. In addition, the carport can be equipped with a nice hidden lighting, which perfectly emphasizes its shape.

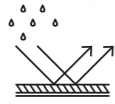
For electric car users, we have provided a dedicated enclosure for the charger, energy storage and necessary safety features. As a result, everything is aesthetically integrated into the form of the carport.



powered by the sun



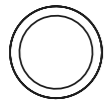
sustainable design



corrosion protection



efficient



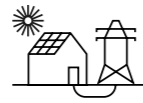
2 in 1



awarded many times



easy installation



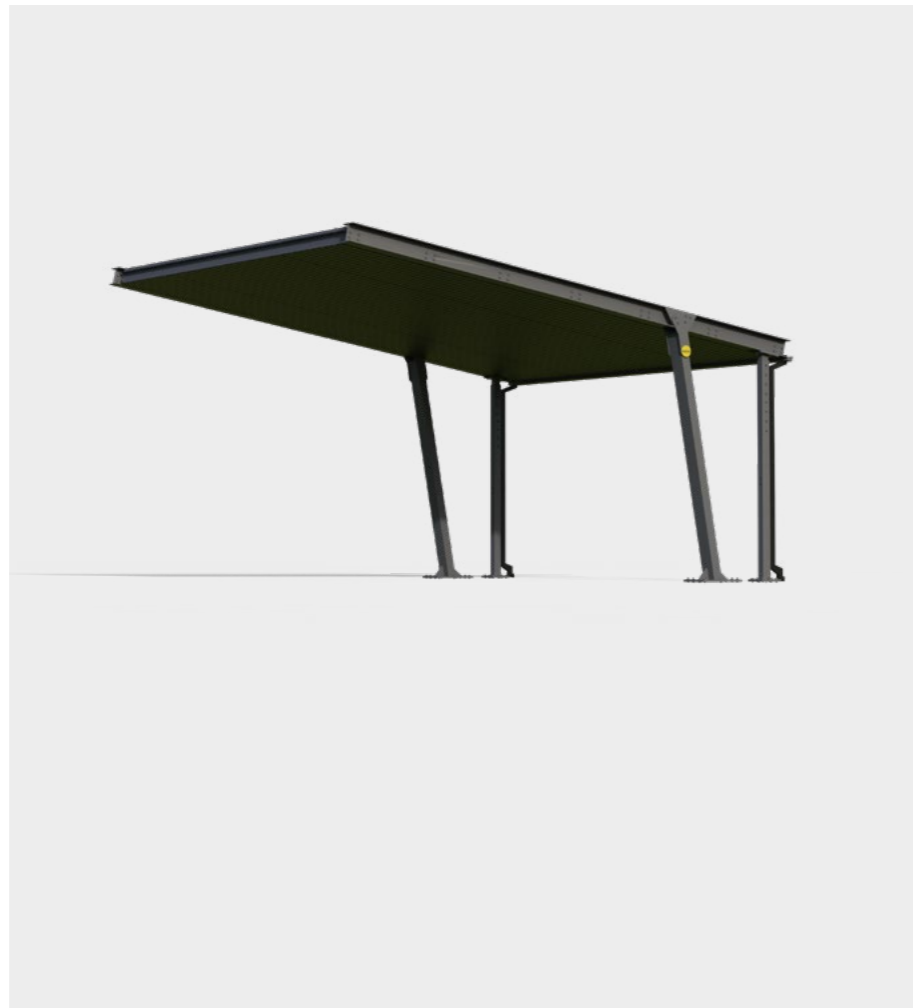
on grid



Addsolis Tilt

A basic version with an industrial look. All the profiles, screw connections are visible here, however, thanks to this you get the raw character of the carport, which will fit perfectly in an industrial environment.

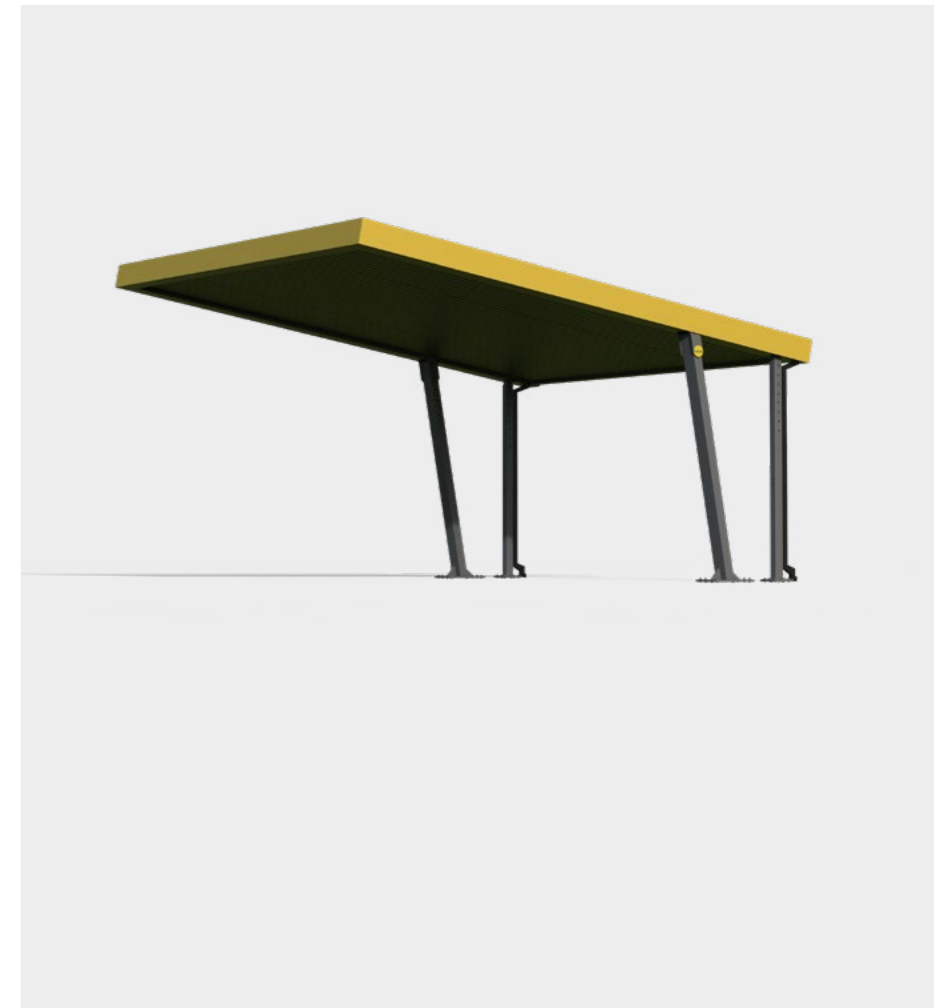
Height	340cm
Minimum height	240cm
Width	550cm
Roof angle	-10° / 0° / 10°
Material	high quality galvanized steel
Solar panels	15 x 450W
Total power	6.75kW



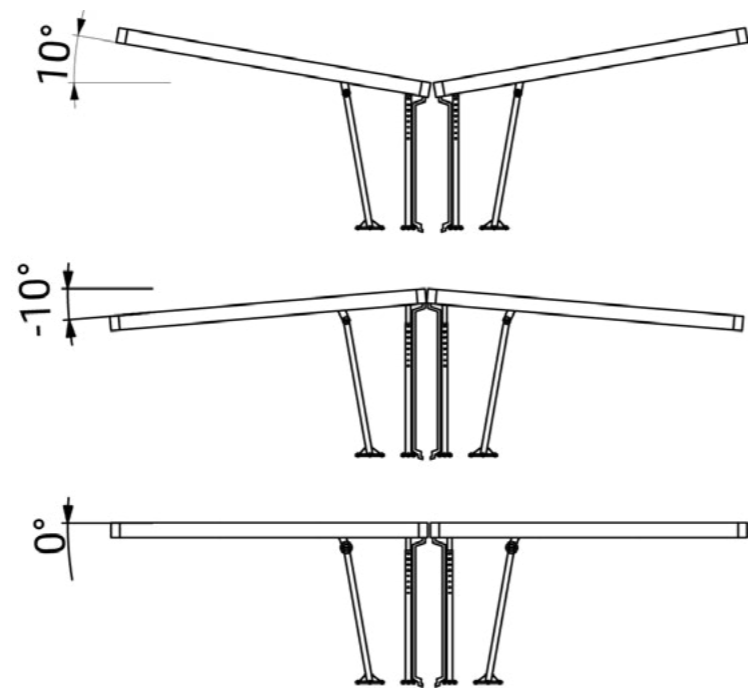
Addsolis Tilt Pro

Tilt pro is a version additionally encased in stainless steel panels, giving it a minimalist look. In addition, the panels can be painted in any RAL color, which gives great opportunities for carport personalization.

Height	340cm
Minimum height	240cm
Width	550cm
Roof angle	-10° / 0° / 10°
Material	high quality galvanized steel
Solar panels	15 x 450W
Total power	6.75kW



Roof Angle Adjust System



Addsolis Tilt Pro EV

The Tilt Pro EV is Addsolis' most advanced shed. Compared to the Tilt Pro carport, it differs further with a dedicated body that hides the car charger and optional energy storage. When designing the Tilt Pro EV, we focused on offering a complete solution with optimally selected components that fit together perfectly.

Height	340cm
Minimum height	240cm
Width	550cm
Roof angle	-10° / 0° / 10°
Material	high quality galvanized steel
Solar panels	15 x 450W
Total power	6.75kW
Specification	#123 ABC



Solar carport economy

A sturdy, certified and weatherproof construction that, in addition to protecting your car, will also deplete a large supply of energy for your home. You can stack sheds together to create larger structures for 6, 8 or more cars. The premium version offers eTile roofing, which can perfectly match your home.



Solar Carport Basic + eTile
Magnelis

A product catalogue is a collection of information about the products or services offered by a company.

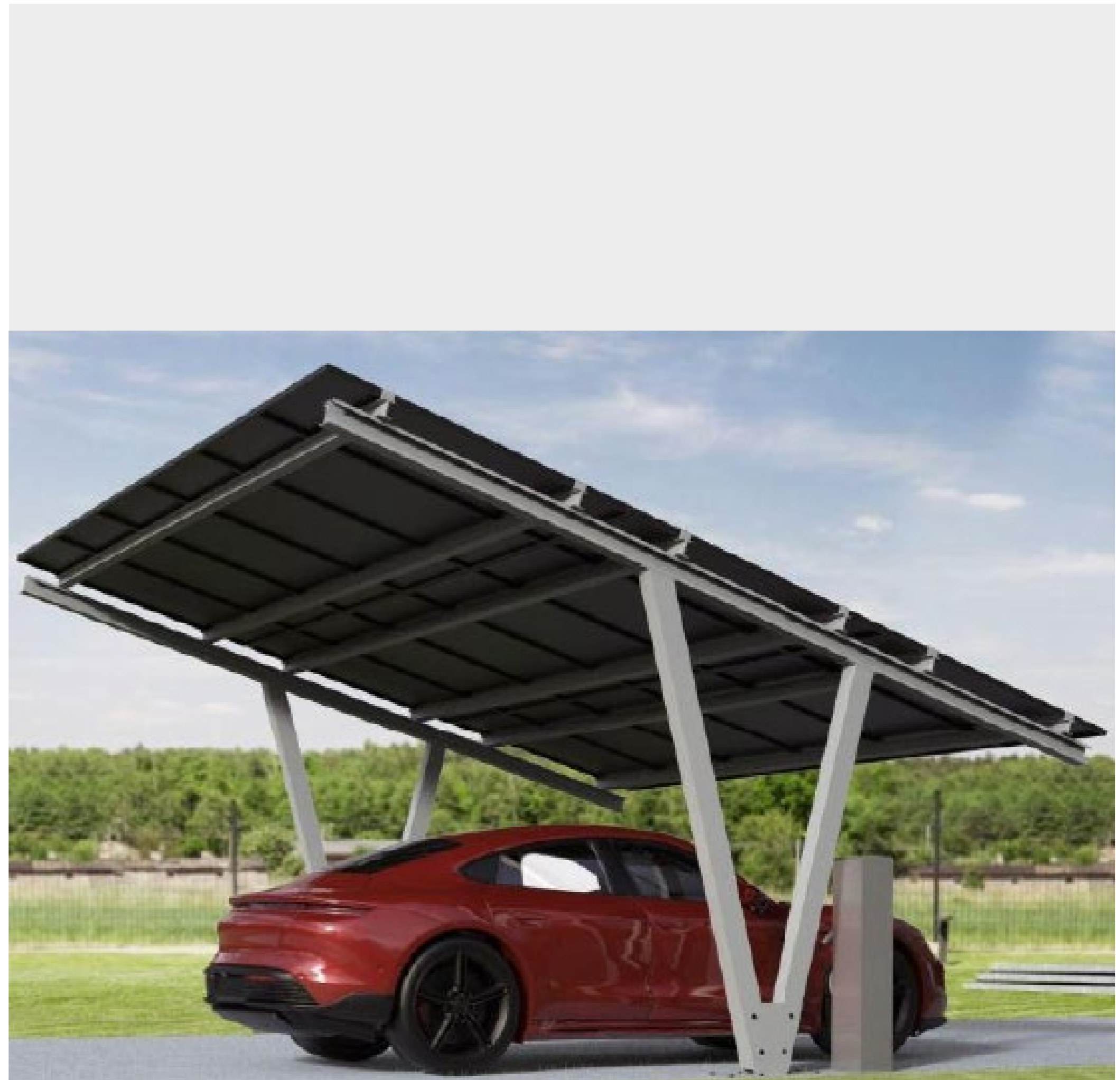
Height	290cm / 180cm
Width	575cm
Depth	520cm
Material	Magnelis steel
Total power	2.4kW



Solar Carport Basic
Magnelis

A product catalogue is a collection of information about the products or services offered by a company.

Height	290cm / 180cm
Width	575cm
Depth	520cm
Material	Magnelis steel
Total power	6.7kW



Breeze energy storage system

Breeze off-grid systems constitute an independent source of electricity. They are mainly used in places where there is no access to electricity or where the access is limited. Nevertheless, more and more people decide to use these systems also as an alternative, which allows to reduce energy costs, as well as provide protection in the event of power grid failure.



Light and small



Simple storage



Low-maintenance



Fast charging



Well designed



Easy to install



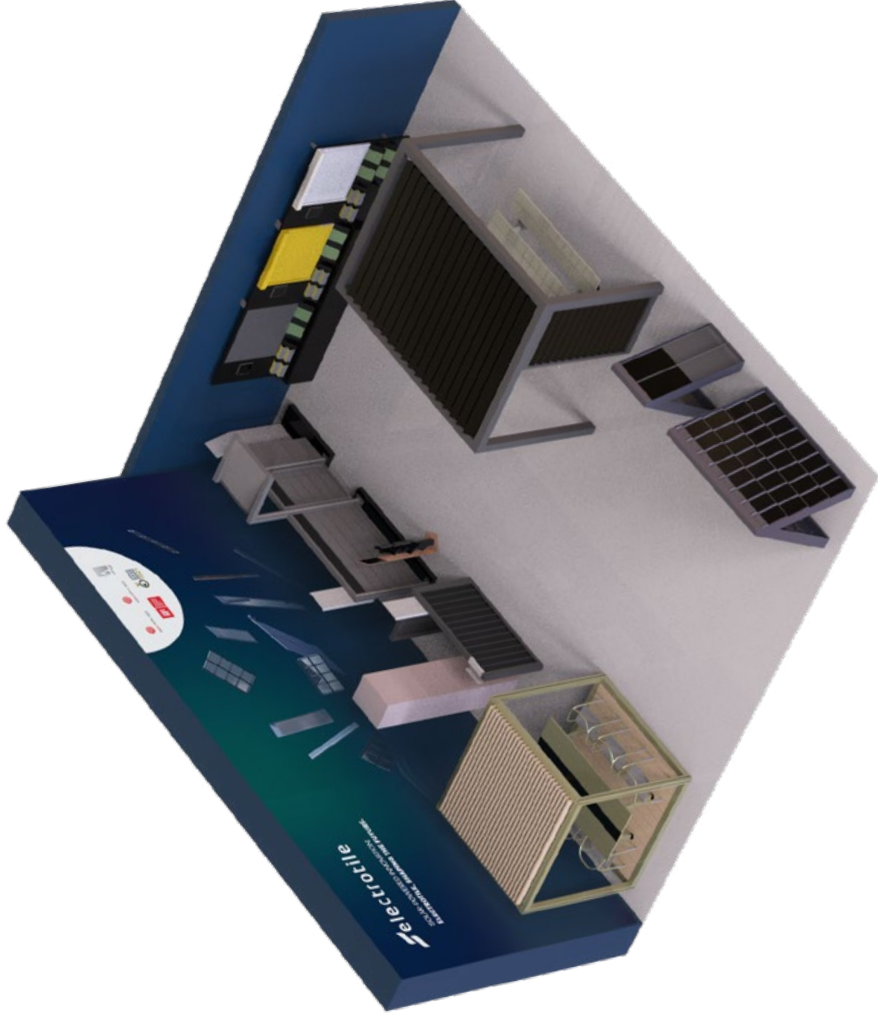
Breeze system vs popular products



Tension	Low (12V, 24V, 48V)	High (230V)
Network	Smooth switching of the home network to the warehouse.	Power outage in the event of a mains failure - regulations require disconnection for safety reasons.
Security	Low-voltage warehouses do not need to be protected from users, children and animals.	The need to protect the storage room against access.
Cells	Next generation of LiFePO4 cells higher number of cycles, longlife technology, better heat transfer. Easy to replace and recycle.	Previous generation - sticks - difficult to replace and recycle.
Use	Gesture control: swipe your hand and the magazine is on. Plug&play - disconnect the cable from the package and disassemble it.	Connection and configuration by a qualified electrician only the need to protect the storage room against access.
Price Durability	32% more cycles, reliable, low cost of ownership.	Cheaper set by 11%: Less durable links. Higher installation and possible repair costs.

Electrotile display stands offer

We offer our partners a diverse selection of specially designed stands showcasing a variety of innovative products. Among these are photovoltaic tiles, photovoltaic fences, balustrades, profile solutions, pergolas, and many other solutions. Our displays are meticulously crafted to highlight the key technical features and aesthetic qualities of each product. This thoughtful presentation greatly



**Become our partner and
create a unique showroom
with innovative products.**



eTile classic display stand

A double-sided, 8-module eTile display that perfectly shows the tile at an angle. The display has additional wheels so it is easy to transport and move. Made on a wooden structure, it accurately shows the installation technology from the inside.

Height	185cm
Width	240cm
Depth	130cm



eTile flat display stand

A double-sided, 4-module eTile Flat display that perfectly shows the tile at an angle. The display has additional wheels so it is easy to transport and move. Made on a wooden structure, it accurately shows the installation technology from the inside.

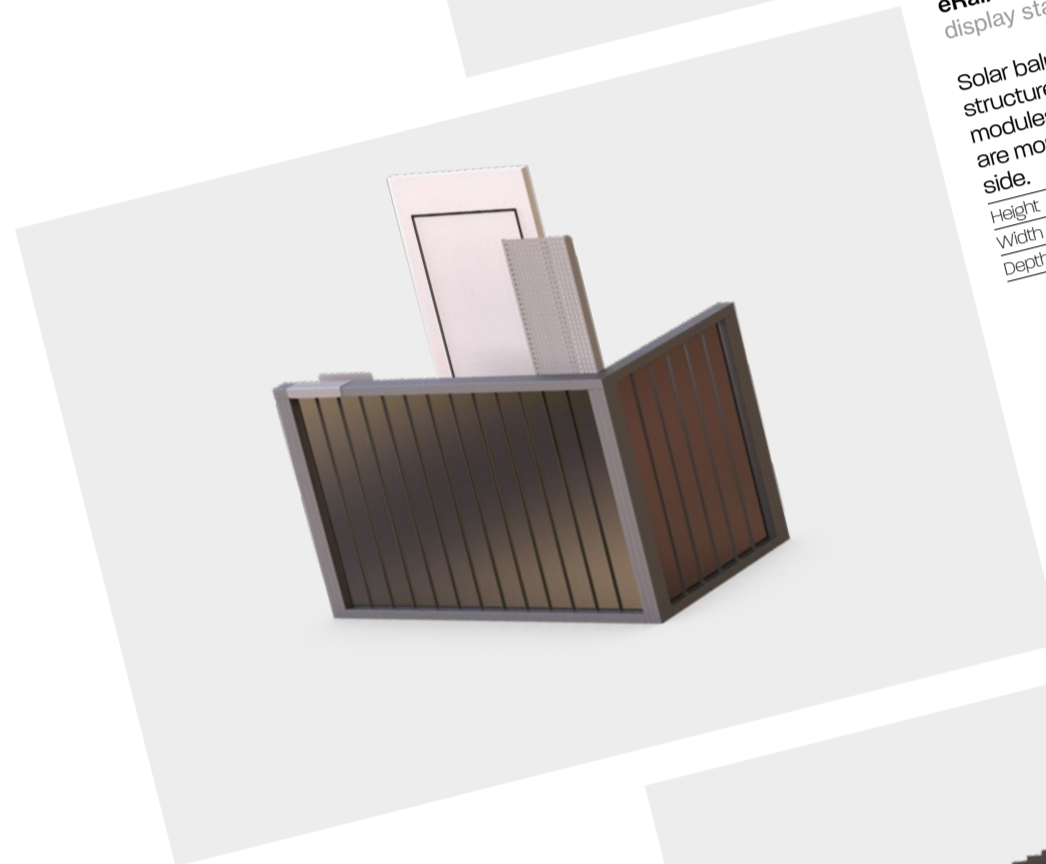
Height	220cm
Width	100cm
Depth	220cm



eRail balustrade display stand

Solar balustrade display shows the structure including the corner. Both modules with and without photovoltaics are mounted - dedicated to the shaded side.

Height	120cm
Width	200cm
Depth	100cm



eBlade fence display stand

The fence display shows the complete solution including canopy and post with intercom. Photovoltaic laths illuminate the structure and make it look impressive even in the showroom.

Height	220cm
Width	360cm
Depth	30cm



ZIP Pro Solar display stand

Stand for zip screens show ZIP Pro Solar in full operation hanging on the wall. In addition, the shelves showcase profile sections, finishing methods, materials.

Height	220cm
Width	150cm
Depth	45cm



Pergola Solar Display pergola

A full-size pergola standing in a showroom always makes an electrifying impression. Despite its large size - it only takes up as much as the area of its legs - you can use the rest of the area under the pergola as a meeting place with customers or as a place to display other products.

Height	280cm
Width	350cm
Depth	450cm



Addsolis carport
outdoor display

Use the space in front of the showroom as an eye-catching element for customers. By installing a carport, you gain a functional place for customers' cars while showcasing your product.

Height	300cm
Width	550cm
Depth	520cm



We provide high-quality marketing materials. Innovative products require innovative presentation!

We offer a whole range of professional materials, marketing, which took us many months to refine. We have libraries of 3d models, materials, visualizations and photos, and a mass of other materials that make working with clients easier. Being our partner, you can freely use our resources to promote your company as a leader in the integrated photovoice industry.

- technical data sheets
- 2d/3d files
- product catalogs
- assembly instructions
- manuals
- videos
- Full support in matching materials for your customer needs



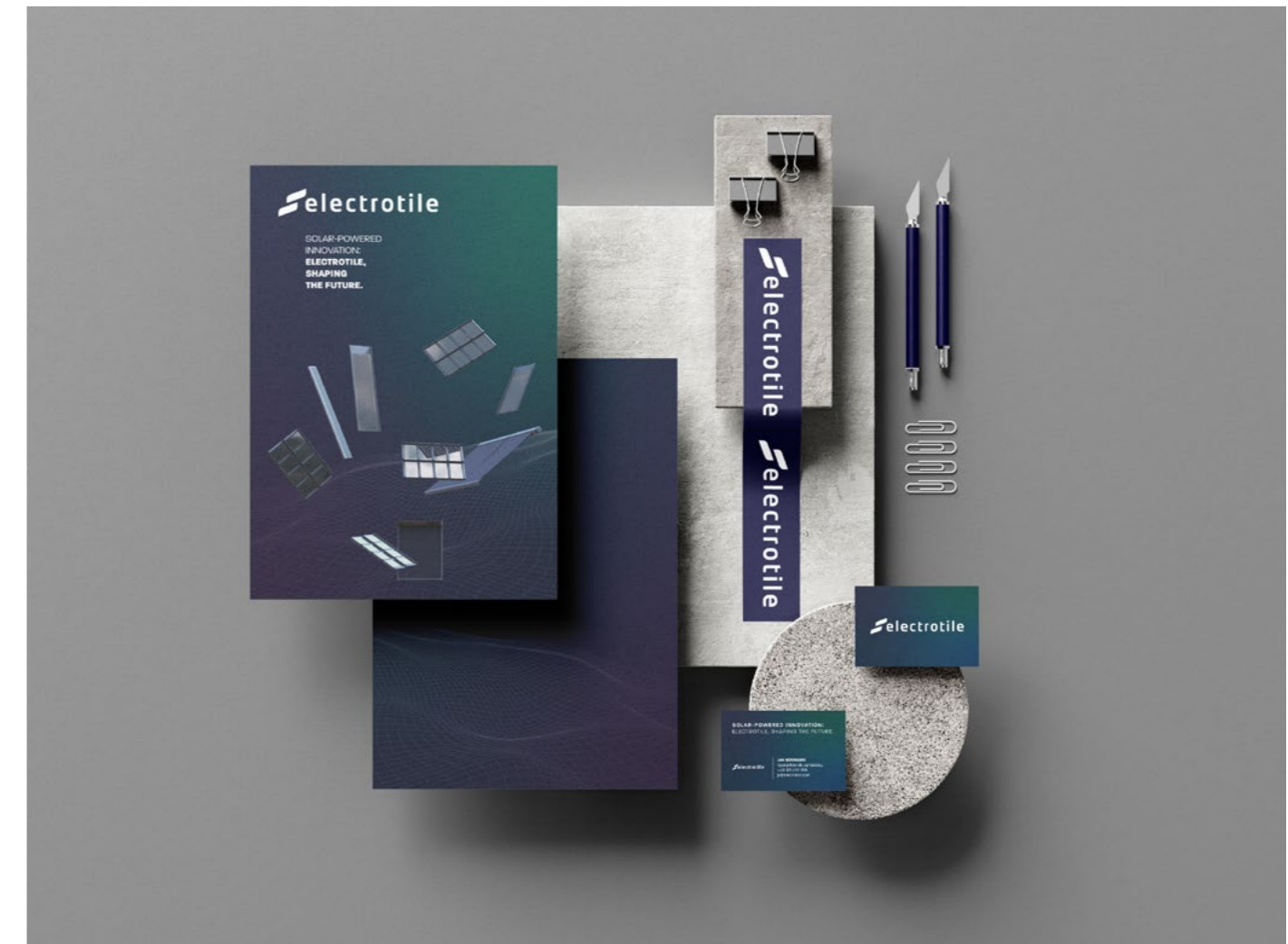
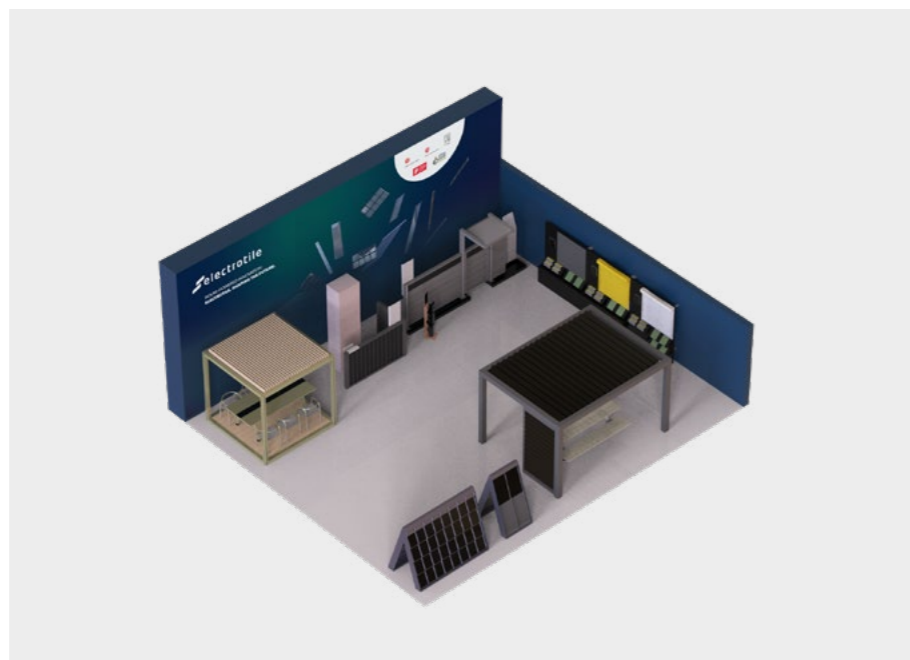
eBLOC
photovoltaic pavilion

Display pavilion is an expanded solution for presenting multiple products within a single development - present garden furniture, urban furniture, solar solutions and zip screens within a single development.

Height	240cm
Width	740cm
Depth	240cm

Complete stand equipment
Design & Installation

Do you want to equip a full-service showroom or invest in new premises? Let us help you arrange it using our products. Our designers and specialists will help you select products and equipment. You will receive a detailed design, which we can then realize for you.



Sales process & electrotile support program

Lead

building audit

project & quotation

deal closing / contract

technical audit

installation

Marketing Support - Open days

Events for customers in your area with full marketing support: training experts, video interviews and sales promotion.



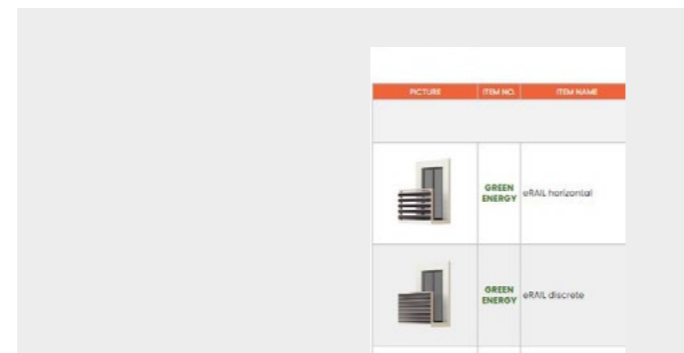
Lead generation campaign

Marketing outsourcing with lead campaign in google, facebook and internet network. Content library, web configurators, leadpages, marketing automation



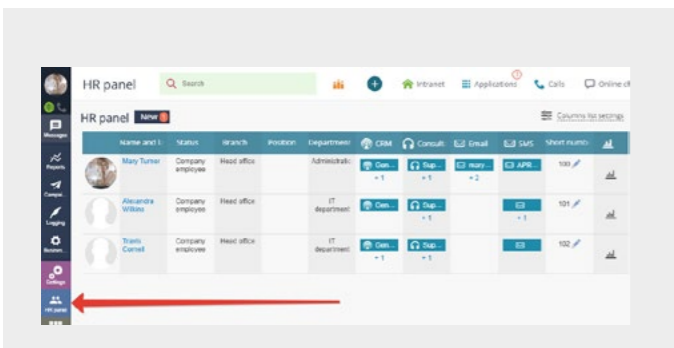
Customer card

Tools for communication and planning the project and making good and reliable offers with visualisation and technical specification. Cards for technical experts and for sales force.

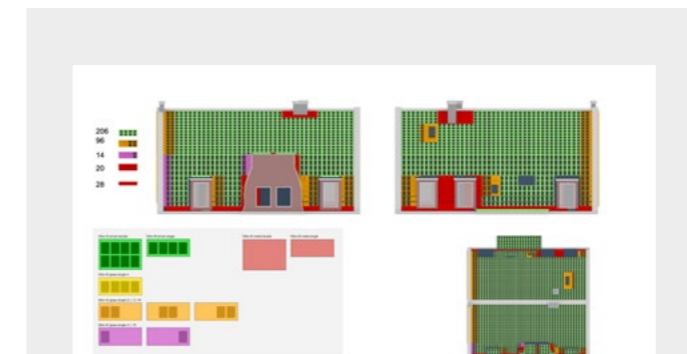


CRM and customer panels

Product configurators for pre-offering and multimedia files, CRM with lead integrations, customer panel for order tracking.



Videos / manuals / instructions



We provide complete instructional materials for the installation and operation of our products. Instructional videos are easily accessible and understandable even for novice installers.

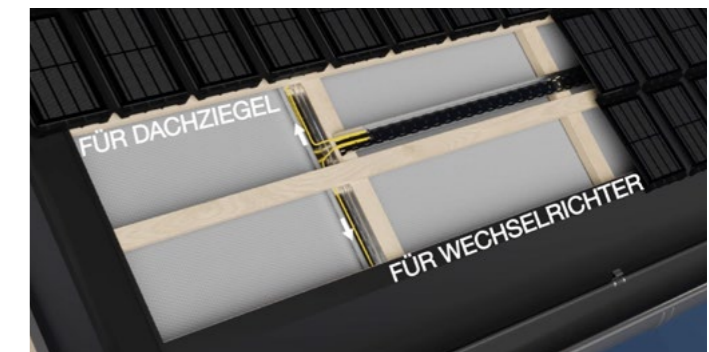


Financing support

If your customer needs a financial product like credit or programs KfW, BAFA, tax relief, we will give you financial calculators and assist you with other product suppliers for renovation projects.

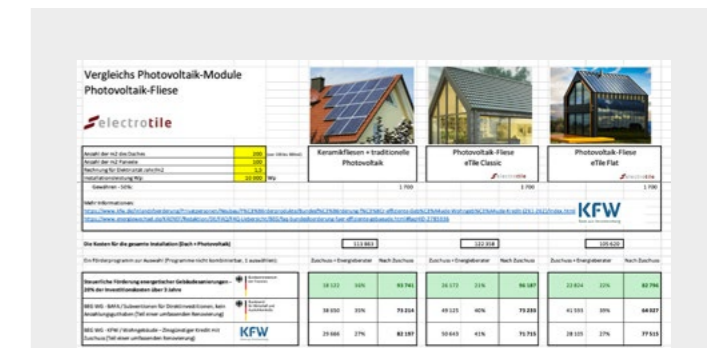
Planning & Design support

The design process is an extremely important step in the installation of eTile. A thorough audit of the building and the selection of appropriate components is the key to the success of a successful installation. We will help implement the process at your site through training and instruction - we will prepare the first few projects together so that the implementation process goes smoothly.

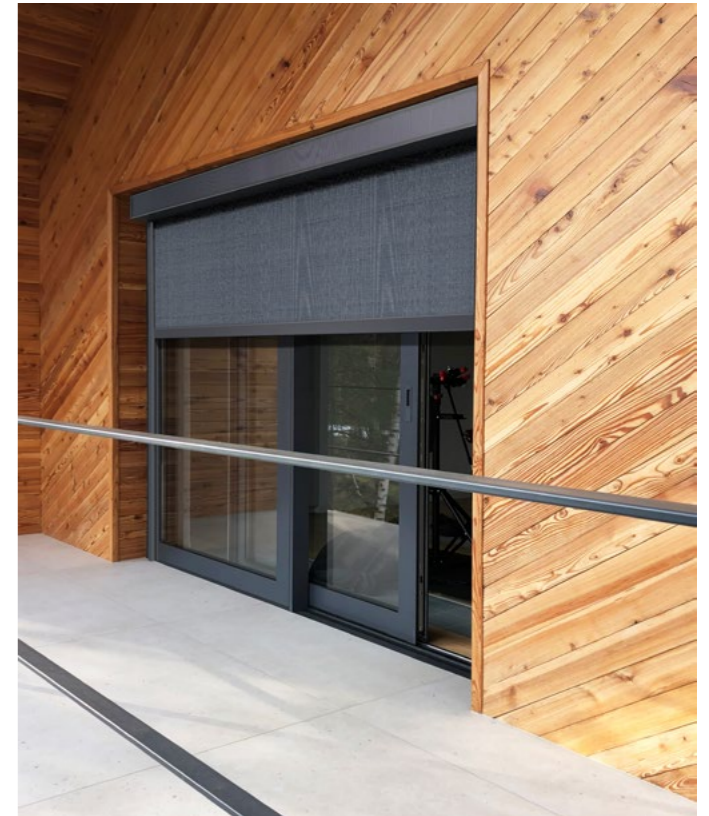
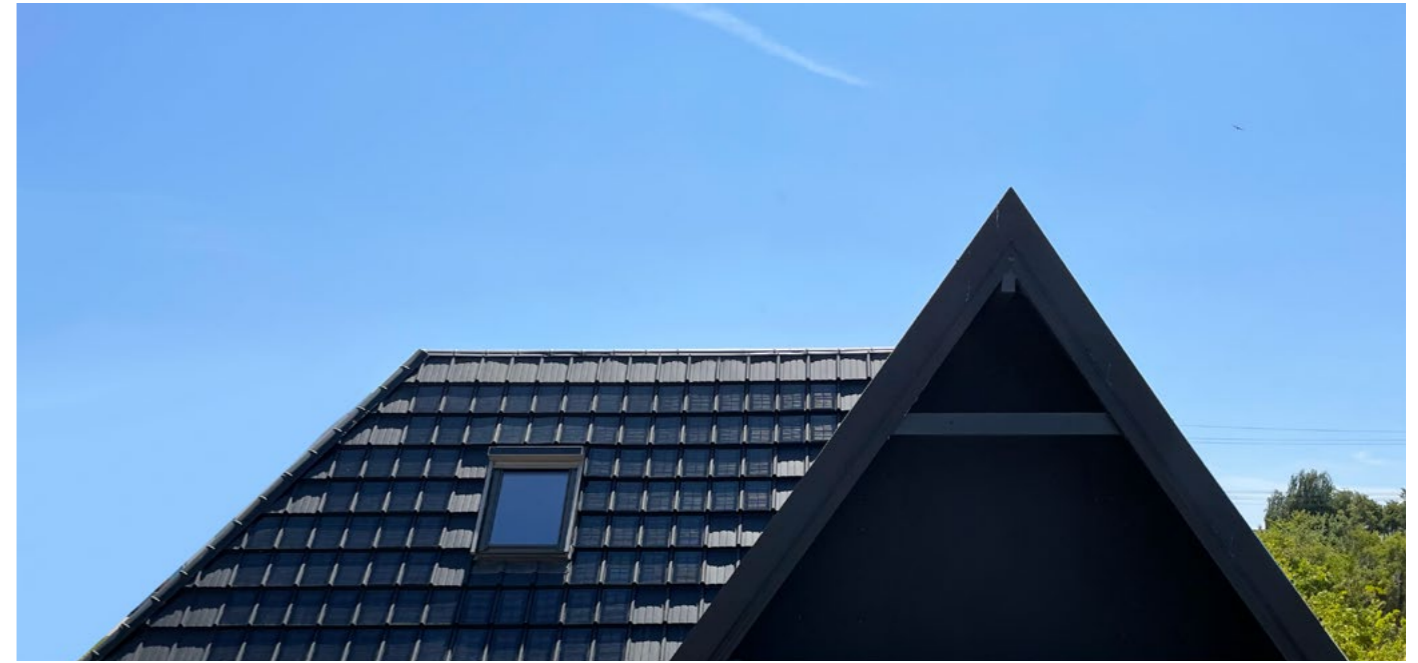
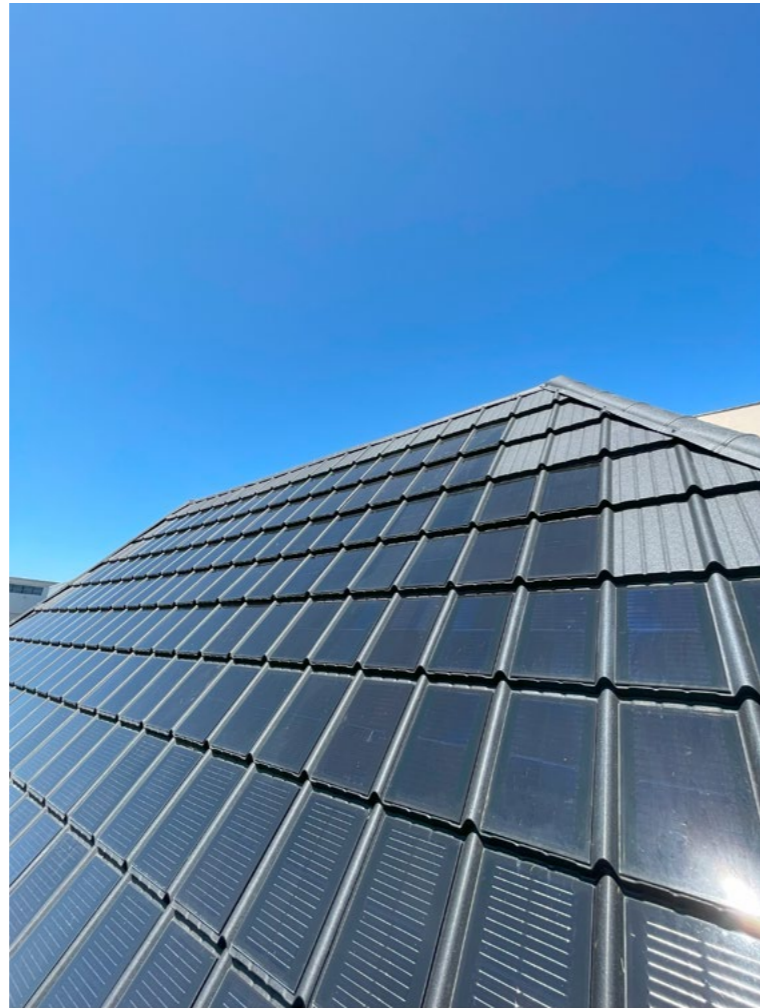


Experts advice

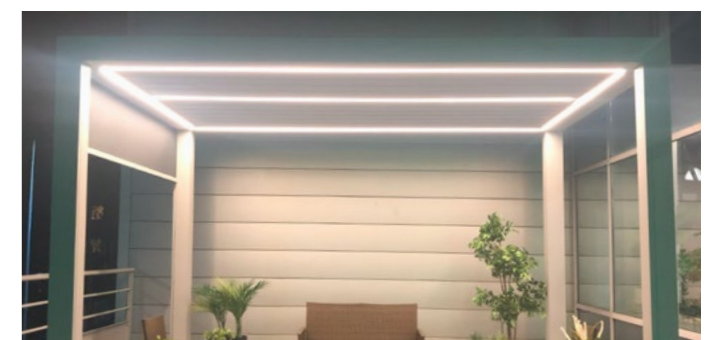
As part of our cooperation, we will teach you how to install solar roofs - we will assign an expert to be your mentor and help you carry out the first few installations together so that your company can gain new competence.



Selected projects



Selected projects



Contact Us

We are always open to working with committed installers, dealers, experts, and anyone interested in working with electrotile. Do you have an idea for joint business development? contact us. For us, even the craziest ideas can turn into something extremely important.

www.dfstudio.nyc.com

- technical data
- 2d/3d files
- product catalogs
- manuals
- videos

sales@dfstudio.nyc

- products price lists -
- expert advice -



distributor of quality
construction materials + training



DFStudio Inc.
243 Grandview Ave
Staten Island NY 10303

www.dfstudionyc.com