



# Strips Multi-sensor +Guard for LoRaWAN

Strips +Guard is a revolutionary magnetic contact sensor for monitoring windows, doors, and valuables.

The **invisible window & door sensor** with up to **10 km range & 10 years** of battery life.

High quality for both **in & outdoor** applications, it is the ideal sensor for any professional IoT application. Strips MS +Guard is a multi-sensor that can also be used for temperature measurements.

- **Open/close detection**
- **Magnetic contact sensor**
- **Indoor or outdoor use**
- **Ultra-thin (3mm/0.12in) design**
- **Up to 10-year battery lifetime**
- **Up to 10 km (6 miles) range**
- **Easy installation**



## DESCRIPTION

### STRIPS MS +GUARD FOR SMART BUILDINGS

Sensitive's MS +Guard - the ultra-slim multi-sensor that comes with a magnetic sensor for monitoring windows and doors, gates, and drawers. The unique form factor enables hidden installations inside the window or door frame or other narrow spaces. Its long battery life of up to 10 years and impressive range of up to 10 km sets it apart, making it perfect for indoor and outdoor IoT applications. The added feature of temperature measurement provides a comprehensive overview of the climate in and around your property.

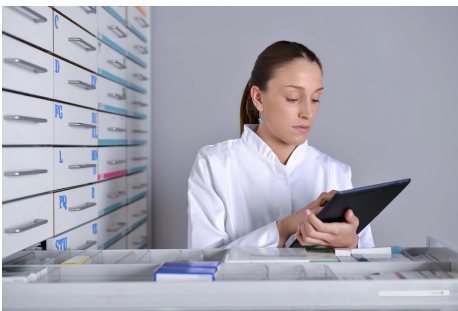
As a multi-sensor, MS +Guard is flexible and customizable to suit your specific needs, making it a valuable investment for your company's operations. It's ideal for businesses looking to modernize their IoT and PropTech, optimize energy usage, automate processes, and enhance property protection.

If you utilize your sensors with a smart building system or our horizontal IoT platform Yggio, you will have a multitude of possibilities thanks to the systems interoperability services. What this means is that you can connect Strips to other IoT devices, systems, and services no matter which technology or protocol, for example, to initiate an alarm if the door is opened or turn off the ventilation when a window has been opened.

#### BENEFITS:

- Blend-in design (<3mm)
- No maintenance (10 years)
- Long-range (10 km)
- Simple installation & mounting
- Low-lifecycle cost (multi-sensor, multi-purpose)

# IMAGE GALLERY



# SPECIFICATION

## Application

Application Security, Room sensor, Window and door monitoring

## Benefits

Benefits Blend-in design, No maintenance (10 years), Long-range (10 km), Simple installation & mounting, Low-lifecycle cost (multi-purpose multi-sensor)

In/Outdoor usage Indoor & Outdoor

## Features

Sensor Open/Close, Temperature

Functionality Tamper alert

Firmware update over the air (FOTA) No

## Connectivity data

Frequency EU868 - Europe 863-870 MHz or AS923 - Asia 915 - 928 MHz or US915 - US 902 - 928 MHz or AU915 - Australia 915 - 928 MHz or IN865 - India

Protocols / Connectivity LoRaWAN

LoRaWAN version V 1.0.4

LoRaWAN class Class A

Antenna Integrated

## Sensor data

Temperature accuracy  $\pm 1\text{ }^{\circ}\text{C}/ 1.8\text{ }^{\circ}\text{F}$  @ 0-30  $^{\circ}\text{C}/32\text{-}86^{\circ}\text{F}$

Sensor type Magnetic contact

## Power supply

Powered by Battery, Built-in battery (LiMnO<sub>2</sub>), 1,4 Wh (480 mA @ 3V), Non rechargeable battery

## Operating Conditions

Operating temperature (max) +60 $^{\circ}\text{C}$

Operating temperature (min) -20 $^{\circ}\text{C}$

IP Class 67, 67

## Mechanical data

Weight (g) 11

Width (mm) 15

Height (mm) 3

## More information

Manual URL <https://public.yggio.net/docs/strips/multi-sensor/#strips-ms-guard>

Battery calculator <https://sensative.com/sensors/strips-lora-sensors/sensative-strips-lora-battery-calculator/>

Payload decoder <https://sensative.com/sensors/strips-lora-sensors/sensative-strips-lora-ms-resource-center/>

## PATENTED

Sensitive Strips are protected by one or more of the following patents:

### **Elongated wireless sensor assembly**

Sweden: SE 537 509

Europe: 3053152

EP 3 670 811 B1

USA: 9,953,496

USA: 10,720,033

USA; 11,170,617

### **PRODUCT SPECIFICATIONS; DISCLAIMER OF WARRANTIES.**

All Products specifications, illustrations, drawings, images, particulars, dimensions, performance data, and other information in this document or made available by us are intended to represent no more than a general illustration of the product and its features. They do not constitute a warranty or representation by us that the product will conform with the same. Products that are shipped to you may vary from these images or specifications. PRODUCTS ARE PROVIDED WITHOUT ANY WARRANTIES OR SUPPORT OF ANY KIND, WHETHER ORAL OR WRITTEN, EXPRESS OR IMPLIED, INCLUDING ANY WARRANTY OF MERCHANTABILITY, FITNESS FOR A PARTICULAR PURPOSE, OR NON-INFRINGEMENT, AND NO OTHER REPRESENTATIONS OR CLAIMS OF ANY KIND WILL BE BINDING ON OR OBLIGATE US. PRODUCTS ARE EXPRESSLY PROVIDED TO YOU "AS IS." WE DO NOT AND WILL NOT PROVIDE ANY TECHNICAL OR CUSTOMER SUPPORT FOR PRODUCTS WHATSOEVER. IF ANY TECHNICAL SUPPORT OR ASSISTANCE IS PROVIDED WITH RESPECT TO PRODUCTS AND THE USE THEREOF, IT IS PROVIDED "AS IS", WITHOUT WARRANTIES, REPRESENTATIONS, OR CONDITIONS OF ANY KIND, EXPRESS OR IMPLIED. WE DO NOT WARRANT THAT THE USE OR OPERATION OF PRODUCTS WILL BE UNINTERRUPTED OR ERROR FREE. YOU BEAR ALL RISKS RELATING TO THE USE OF PRODUCTS AND THE QUALITY AND PERFORMANCE OF PRODUCTS AND ASSUME THE ENTIRE COST OF ALL NECESSARY SERVICING, REPAIR, OR CORRECTION EXCEPT AS EXPRESSLY SET FORTH AS PART OF THE EXCHANGE POLICY. THESE TERMS STATE YOUR SOLE AND EXCLUSIVE REMEDIES. SOME JURISDICTIONS DO NOT ALLOW FOR THE DISCLAIMER OR LIMITATION OF WARRANTIES, SO THE ABOVE DISCLAIMER OR LIMITATION MAY NOT APPLY TO YOU.