

KERLINK reference : **KLK03410**

Cavity Filter - 865-870 MHz, EU coexistence LTE800, RGSM

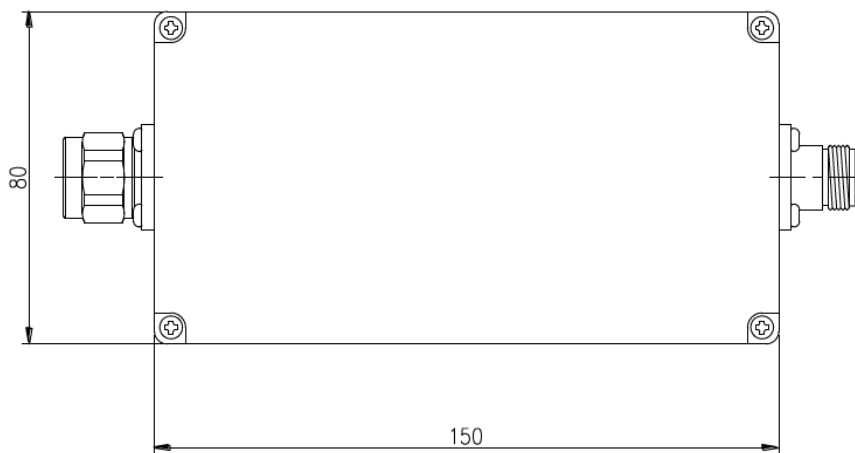
Particularly useful in case of colocalization with other transmitters (Cellular, ...), cavity filter avoids desensitization of the gateway.

The cavity filter selection is depending on the LoRaWAN regional parameters used by the gateway and bands used by transmitter colocalized with the gateway.

Performances of cavity filter are presented here after.

Specifications

Frequency range	865-870 MHz
Targeted countries	Europe Middle East Africa
LoRaWAN Regional Parameters	EU868 IN865
Colocalized disturbers	LTE800 RGSM
Insertion Loss (Max)	1 dB
Band Ripple (Max)	0.5dB
Return loss (Min)	20 dB
Rejection (Min)	50dB @ 10~824 MHz 20dB @ 832~862 MHz 20dB @ 880~925 MHz 50dB @ 925~960 MHz 50dB @ 960~2700 MHz
Power handling	>10W
Connector	N Male / N Female
Dimensions	80 x 150 x50 mm
Weight	1.5Kg
IP Protection	IP66
Operating temperature range	-40°C to +85°C



Document Version: 1.0
Updated: 06-May-2020

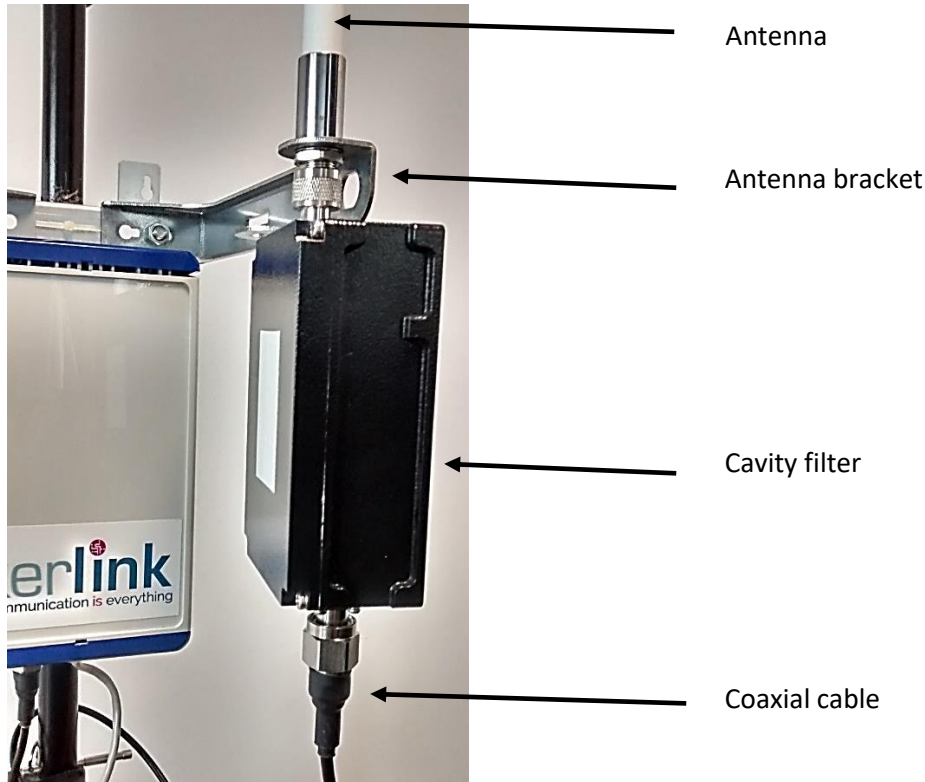
- Responsibility for the information and views set out in this document lies entirely with the manufacturer. Kerlink can't be held responsible for the exactness of information contained therein.
- Accessories are not covered by the maintenance nor warranty extension offers.
- The standard, legal manufacturer's warranty is 1 year.

KERLINK reference : **KLK03410**

Cavity Filter - 865-870 MHz, EU coexistence LTE800, RGSM

Installation recommendations:

Each time it is possible, cavity filters should be directly mounted (screwed) on the N connectors of the LoRa antenna as follows:



Avoid direct mounting on the gateway since the weight of the cavity filter may deform enclosure.

Reduce cable length between gateway and cavity filter as much as possible (by default, cable length provided by Kerlink with antenna kit is 1 meter)

Earthing is ensured by antenna brackets earthing connection (Cable section: 25mm² min)

To improve the durability of the RF connections against environmental aggression (moisture, pollution ...), protect connectors of cavity filters with an insulating tape like the reference 130C from 3M.

Document Version: 1.0
Updated: 06-May-2020

- Responsibility for the information and views set out in this document lies entirely with the manufacturer. Kerlink can't be held responsible for the exactness of information contained therein.
- Accessories are not covered by the maintenance nor warranty extension offers.
- The standard, legal manufacturer's warranty is 1 year.