



44101 S. GRIMMER BLVD • FREMONT • CA • 94539 TEL: 510-440-1605 • FAX: 510-440-9864 • www.bloxracing.com

INSTALLATION GUIDE

PN: BXPP-26116
BLOX RACING GURNEY FLAP
2015+ SUBARU WRX, STI

DISCLAIMER

This product requires the vehicle to be equipped with the OEM “low profile” trunk wing or aftermarket equivalent. This product requires drilling into the wing for installation. If you are unsure or not qualified, please contact a qualified mechanic or body shop for installation.

If you are going to perform the installation it is very IMPORTANT to adhere to the philosophy of “measure twice and cut once”.

Included with this product:

- Billet, wrinkle power coated gurney flap (1)
- M6x14 screws (8)
- M6 billet washers (8)
- Rubber washers (8)
- M6 rivet nuts (8)
- M6x20 hex bolts (2)
- Rivet nut tool (1)
- M4 hex wrench (1)

Tools required

- Masking tape
- Tape measure
- Straight ruler
- Pencil or pen
- Drill
- 1/8” drill bit
- 25/64” drill bit

Before you begin, please double check the contents of your purchase. It will save time and effort by reading and understanding the instructions prior to starting.

THANK YOU FOR SUPPORTING BLOX RACING.



510-440-1605 | BLOXRACING.COM



Step 1: Inspect the rear wing and notice the lines and how they transition. There is roughly a $\frac{3}{4}$ " flat space that we will refer to throughout the installation process.

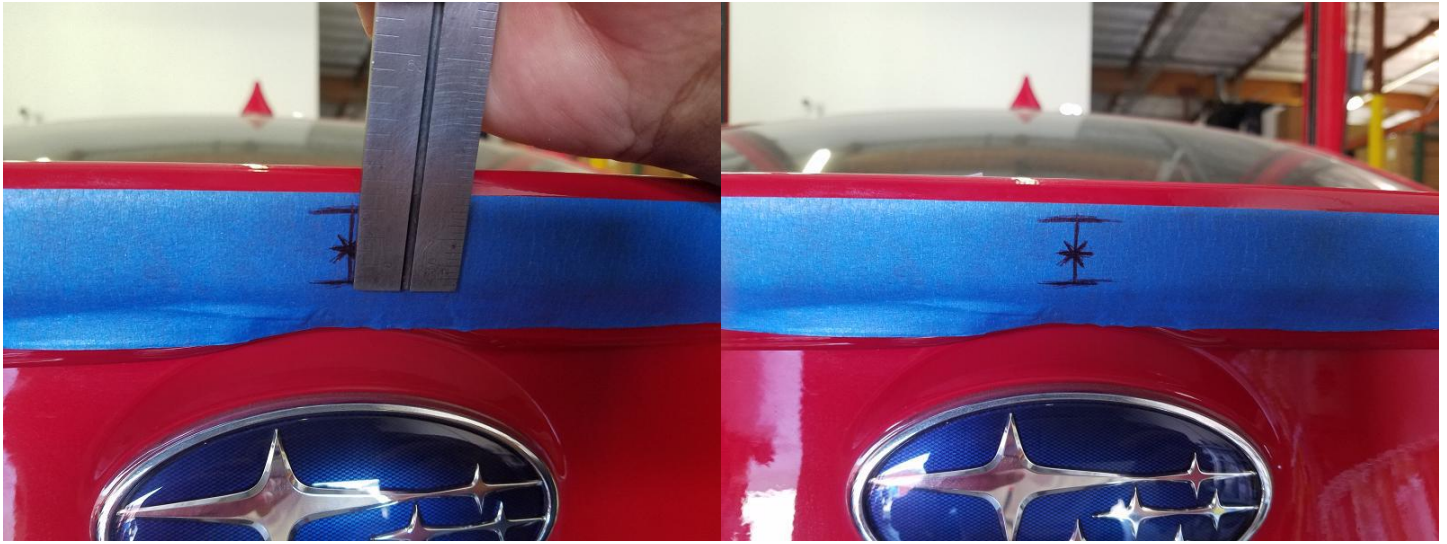
We highly recommend using tape to mask off the wing to protect the paint while measuring for the mounting holes.

Step 2: Using the tape measure, measure from the rear taillight, going diagonal, to the center of the wing. It will measure 22". Mark with a pencil or pen. Repeat the measurement from the opposite taillight. Mark again.

This will mark the center hole.

Reference images on next page.





Step 3: Using the straight ruler, measure $3/8$ " from the bottom of where the $3/4$ " flat space begins. Mark with pencil or pen. In case the marks do not meet, please measure again.



Step 4: Once you have confirmed the center, please drill a $1/8$ " hole at the center mark. This will help in the next step in drilling out the actual hardware mounting hole.



Step 5: Drill a 25/64" hole. Remove some tape around this hole.

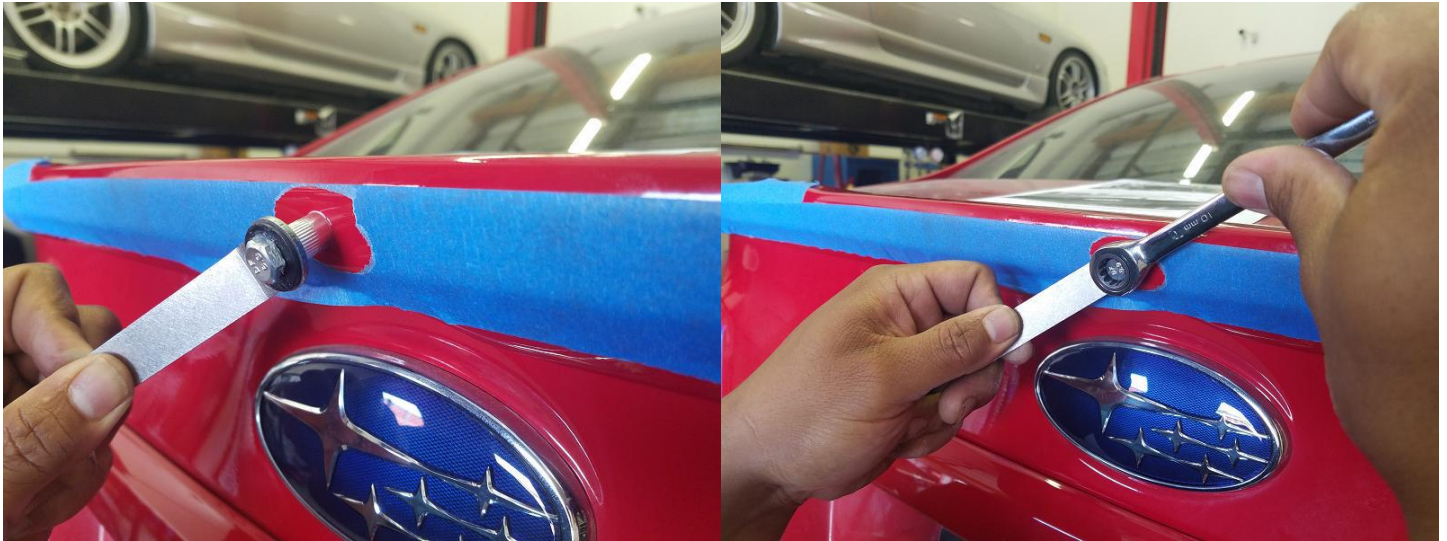




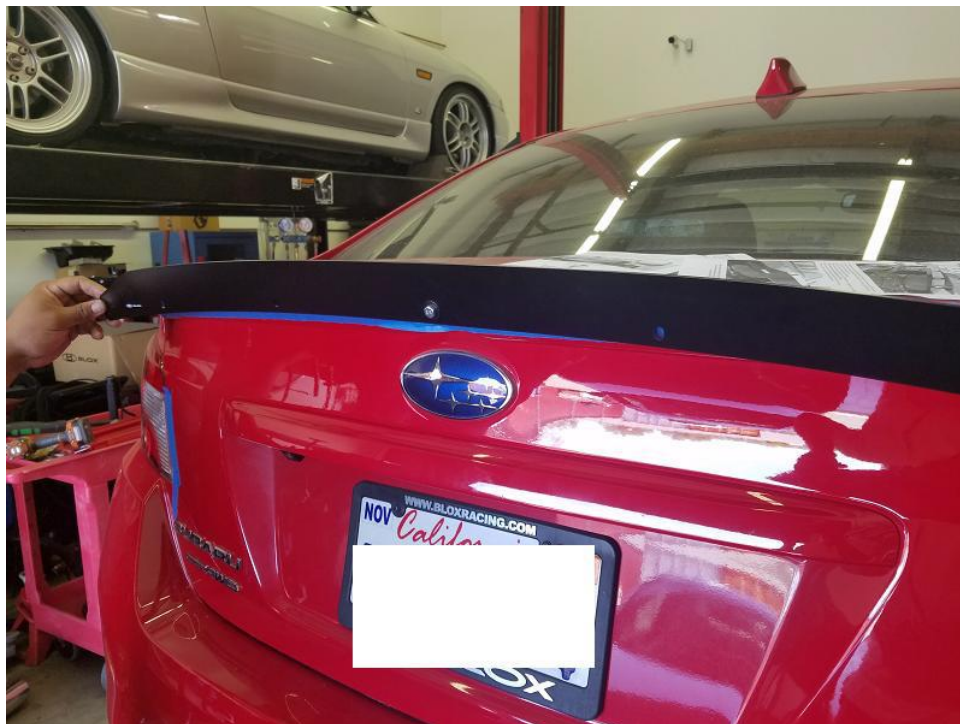
Step 6: Take (1) hex bolt, (1) washer and slide it into the rivet nut tool. Screw a rivet nut on to the threads, like the previous image shows.

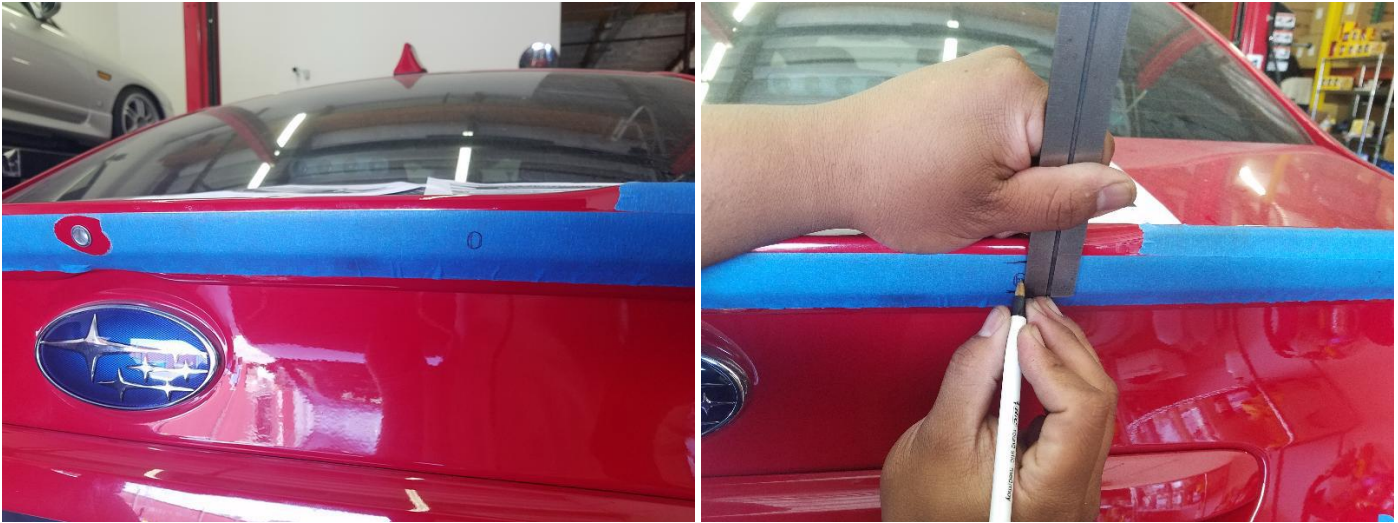
Step 7: Push the rivet nut into the hole. Using a M6 wrench or socket, slowly tighten the hardware. Initially, it will feel tight and seem to have resistance. This is absolutely normal as the rivet nut is now starting to compress and bite in to the wing.

Continue to tighten until it stops. Remove the hex bolt by turning the opposite direction. The rivet nut will now remain in place.



Step 8: Test fit and align the BLOX Racing Gurney Flap using the center hole and hardware you just removed. This will help you mark the remaining holes.



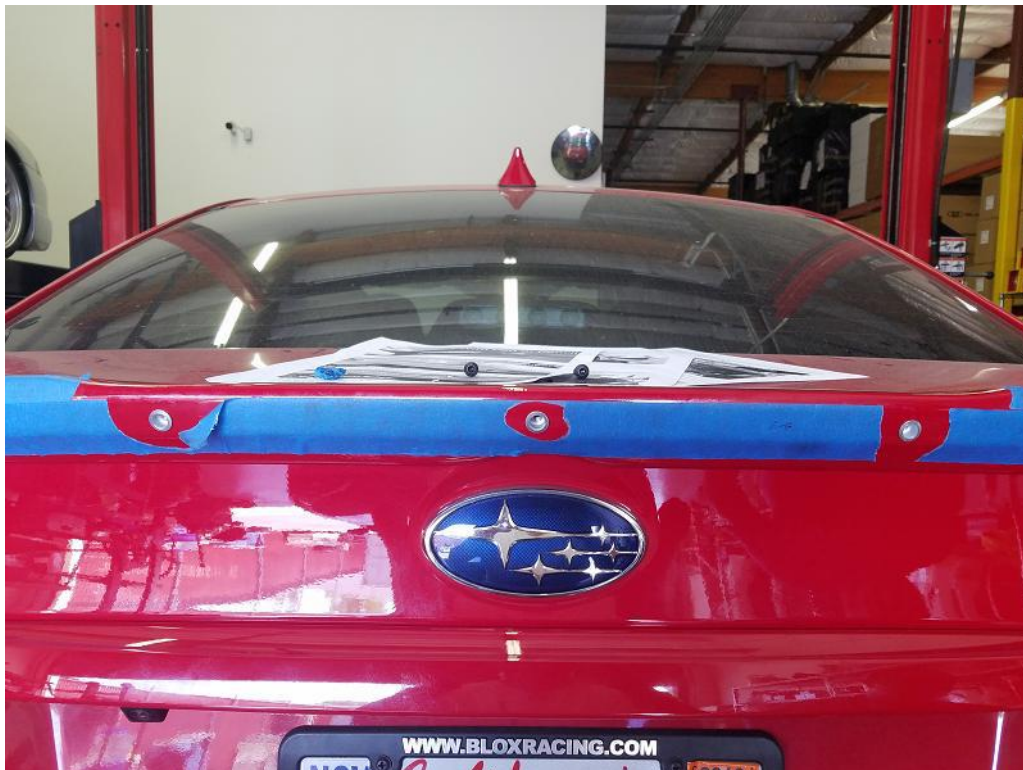


Step 9: While the Gurney Flap is temporarily mounted at the center, trace the remaining holes with a pencil or pen. The remaining hole-centers will be measured using the same methods and steps just completed in locating the center hole.

REMINDER: MEASURE TWICE, CUT ONCE. PATIENCE IS A VIRTUE.

Step 10: It is recommended to mock-up the Gurney Flap after each hole is drilled to make sure all the holes drawn remain in the same position. After all the holes have been measured and drilled, do a final mock-up to align the Gurney Flap.

Don't forget to use the provided rubber washers in between the Gurney Flap and wing. Tighten to 5ft/lbs.



510-440-1605 | BLOXRACING.COM

