

BLOXRACING

INSTALLATION GUIDE

PN: BXSS-20603

BLOX Racing Subframe Hard Collar Kit



APPLICATIONS

2002-2005 HONDA CIVIC SI (EP3)
2002-2006 ACURA RSX
2006-2011 HONDA CIVIC

2007-2008 HONDA FIT

PRODUCT INCLUDES

8-TOTAL COLLARS
2X FD1, 2X FD2, 2X FD3, 2X FD4

BEFORE INSTALLING THIS PRODUCT, PLEASE READ THE INSTALLATION GUIDE FIRST. IF YOU HAVE ANY QUESTIONS OR CONCERNS, REFERENCE THE VEHICLE'S FACTORY SERVICE MANUAL OR CONTACT AN EXPERIENCED MECHANIC OR TECHNICIAN.

IMPORTANT NOTES

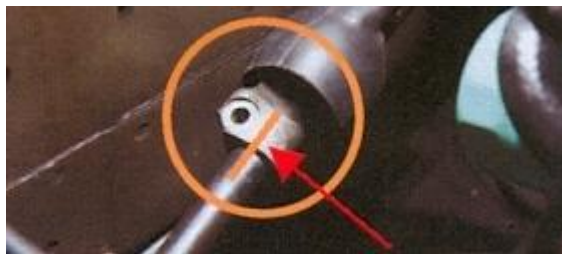
DURING INSTALLATION, DO NOT USE IMPACT TOOLS. ONLY USE HAND TOOLS. RE-TORQUE MOUNTING BOLTS AFTER THE 1ST 500 MILES OR AFTER EACH TRACK RACING EVENTS.

REQUIRED TOOLS

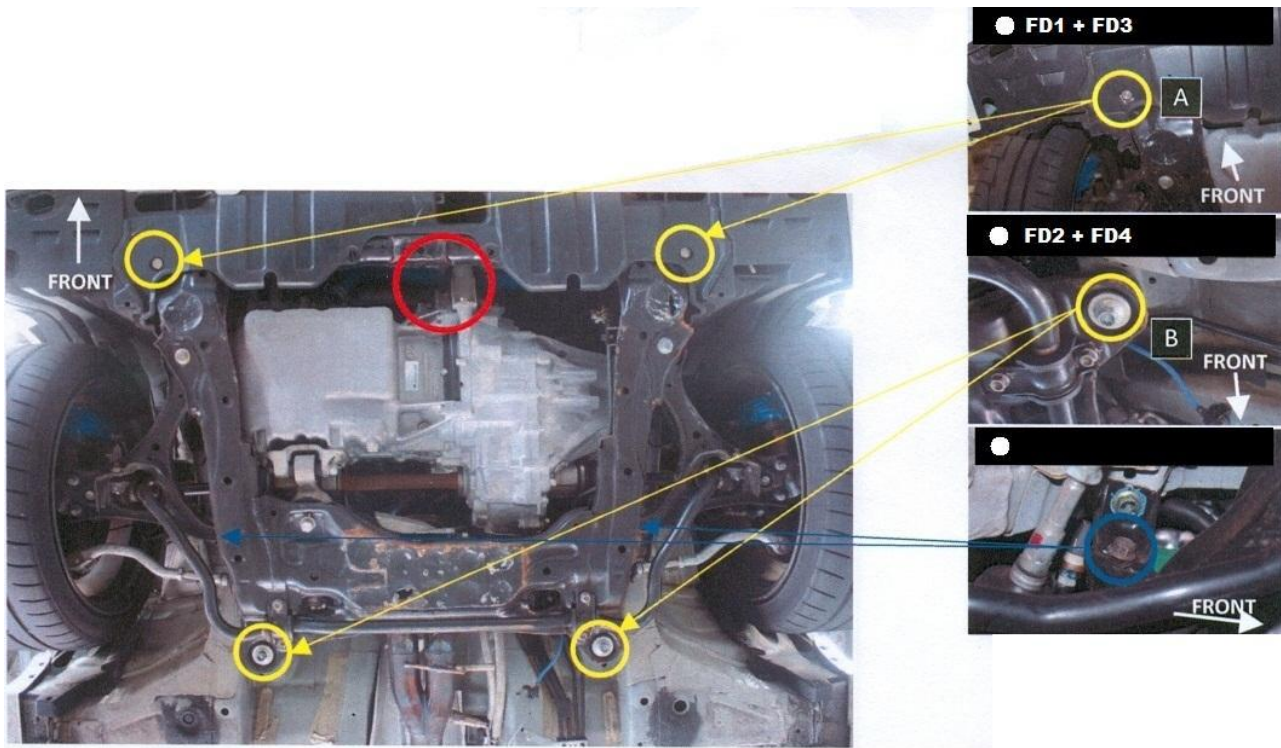
- Lug, Socket and Box Wrenches
- Torque wrench
- Jack and jack stands (or access to lift)

ASSEMBLY: 2002-2005 Honda Civic SI (EP3), 2002-2006 Acura RSX, 2006-2011 Civic

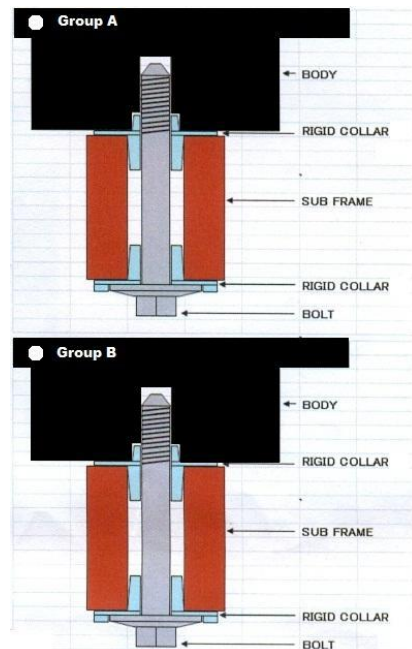
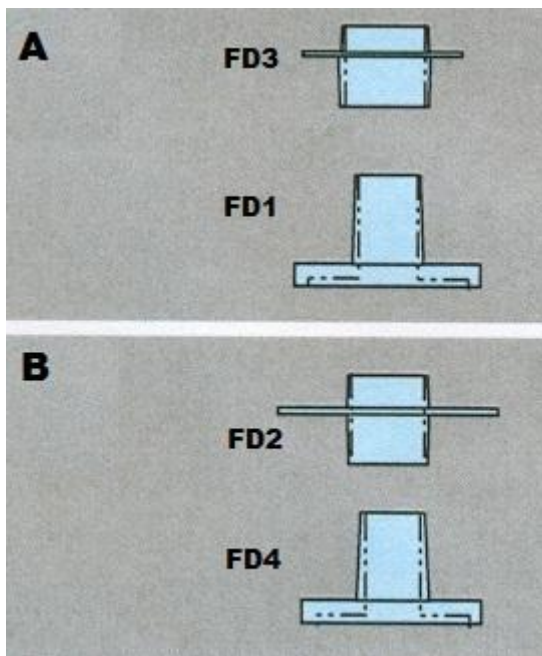
1. Using an automotive lift or hydraulic jack, raise vehicle and remove tires.
2. Disconnect the link join on the steering column shaft. Make sure to mark the position of the shaft vs. the linkage to properly align the two during reinstallation



3. Loosen the bolts on the subframe. DO NOT REMOVE THE BOLTS. Drop the subframe 8mm from the chassis of the vehicle.

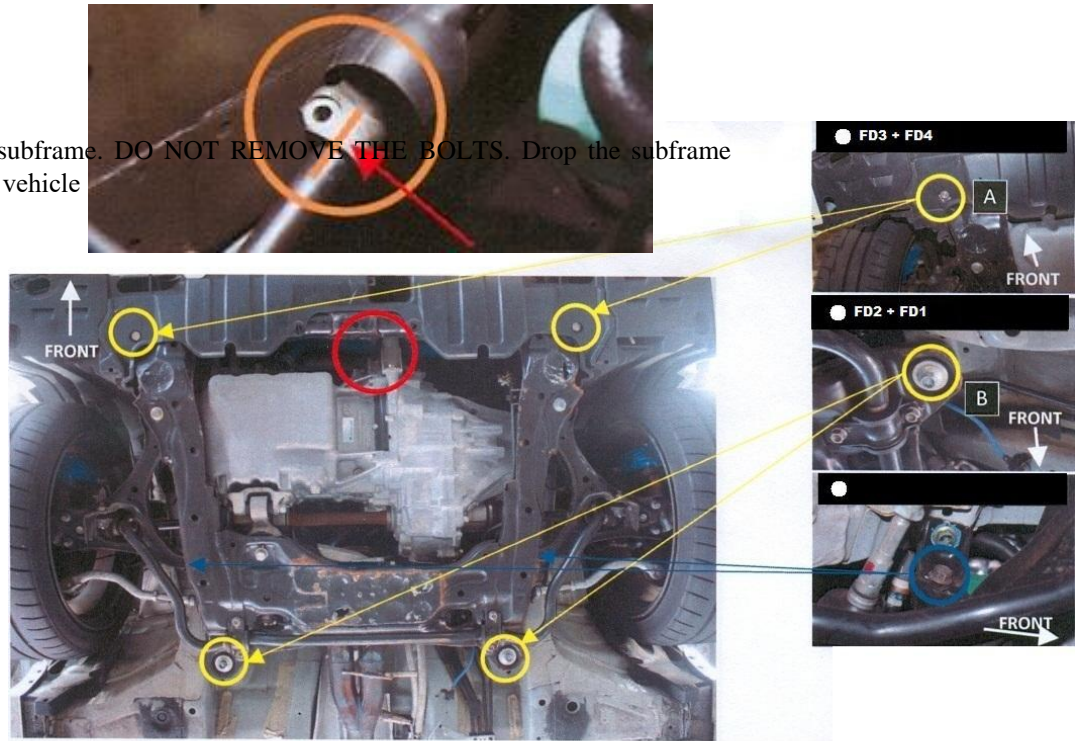


4. Please match the imprinted part numbers on each collar to the appropriate position and orientation shown in the diagram.
5. Install collar FD3 to the front outer position in between the body and subframe with part number and logo facing toward ground, and FD1 in between the subframe and the bolt flange with part number facing up.
6. Install collar FD2 to the rear outer position in between the body and subframe with part number and logo facing toward ground, and FD4 in between the subframe and the bolt flange with part number facing up.
7. **TORQUE ALL BOLTS EVENLY TO THE CORRECT FACTORY SPECS ENSURING PROPER AND LEVEL/EVEN INSTALLATION.**



1. Using an automotive lift or hydraulic jack, raise vehicle and remove tires.
2. Disconnect the link join on the steering column shaft. Make sure to mark the position of the shaft vs. the linkage to properly align the two during reinstallation

3. Loosen the bolts on the subframe. **DO NOT REMOVE THE BOLTS.** Drop the subframe 8mm from the chassis of the vehicle



4. Please match the imprinted part numbers on each collar to the appropriate position and orientation shown in the diagram.
5. Install collar FD3 to the front outer position in between the body and subframe with part number and logo facing toward ground, and FD4 in between the subframe and the bolt flange with part number facing up.
6. Install collar FD2 to the rear outer position in between the body and subframe with part number and logo facing toward ground, and FD1 in between the subframe and the bolt flange with part number facing up.
7. **TORQUE ALL BOLTS EVENLY TO THE CORRECT FACTORY SPECS ENSURING PROPER AND LEVEL/EVEN INSTALLATION.**

