

# BLOXRACING

## INSTALLATION GUIDE

PN: BXFL-50221, BXFL-50221-HP

BLOX Racing 3" Turbo Inlet Hose



### INCLUDED

- 1x BLOX Racing 3" turbo inlet hose with nozzles
- 1x turbo inlet adapter
- 2x M6x20 socket cap screws
- 1x M5 hex key wrench
- 1x 3/8" plastic union
- 1x 3/8" 90-degree connector (for use with aftermarket boost control solenoid)

- 1x 5/8" plastic union
- 1x size-52 (70-90mm) clamp
- 1x size-48 (60-80mm) clamp
- 1x size-20 (23-35mm) clamp
- 5x size-6 (12-22mm) clamp
- 2x cable ties

### APPLICATIONS

2015-2020 SUBARU WRX

### PRODUCT DISCLAIMER

Some products may not be legal for use on public highways. It is the purchaser's responsibility to check and comply with all local, state and federal laws before installing components and operating vehicle.

The installation and the use of some BLOX Racing performance products may also affect or void a vehicle's manufacturer warranty and insurance policy. BLOX Racing assumes no responsibility for any damage or injury to persons or property resulting in improper installations or misuse of any product and will not be responsible for any claims of loss of profit, labor and delay, indirect, incidental or consequential damages that might be claimed as a result of failure of any part.

BLOX Racing reserves the right, without notice, to make changes in materials, specifications, product design, part numbers, packaging and labeling without incurring any obligation to the buyer for the previously purchased merchandise.

It is always recommended to refer to and follow the recommended how-to steps in your factory service manual. You can also access the service manual here: <https://techinfo.subaru.com/stis/#/login>

### Installation Steps:

Always use proper automotive equipment and tools and take necessary safety precautions.

#### REMOVING SPLASH GUARD & SKID PLATE

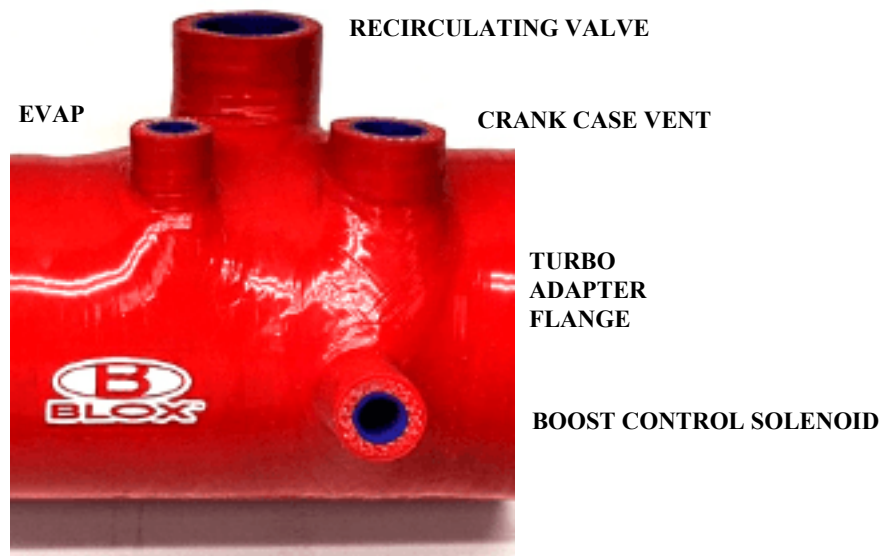
- Raise your vehicle up using a lift or jack and jack stands. Never support your vehicle with only the jack as death or serious injury can occur.
- Locate and remove the (3) plastic fasteners in each left and right wheel well.
- Locate and remove the (7) plastic fasteners and the (2) 12mm bolts from the lower portion of the splash guard. Remove the splash guard from underneath the car and leave to the side.
- Remove the (4) 12mm bolts holding the skid plate to chassis. Leave the skid plate aside.

#### REMOVING FACTORY INLET HOSE & CONNECTIONS

- Locate and remove the rubber flexible intake hose from the plastic manifold and intake system.
- Locate and remove the three hoses (EVAP, Crank Case Vent and Boost Control Solenoid) from the plastic manifold connected to the turbo.

NOTE: 2017+ models will have an electrical connector on the larger crank case vent hose

- Remove the (2) 10mm bolts that secure the plastic turbo manifold to the inlet of turbo.
- Using long needle nose pliers, pinch the large hose clamp that secure the OEM recirculating valve to the plastic turbo manifold. Slide it down and away.
- Pull the plastic turbo manifold down and off the OEM recirculating valve. Some gentle twisting may be necessary to remove it.
- Unplug the electrical connection from the boost control solenoid which is located behind the plastic turbo manifold.



## INSTALLING BLOX RACING INLET HOSE

- Remove the rubber gasket/O-ring from the plastic turbo manifold and install into the provided turbo adapter flange.
- Install the provided turbo inlet adapter flange and the size-52 hose clamp to the end of the BLOX Racing inlet hose. Leave the hose clamp loose.
- Install the provided size-48 hose clamp to smaller side of the BLOX Racing inlet hose. Leave loose.
- Install the provided 5/8" union into the crank case vent and secure it with one of the provided size-6 hose clamps.

NOTE: Trimming roughly 1/2" off the crank case hose is recommended and will make the installation easier.

- Install the provided 3/8" union into the EVAP and secure with one of the provided size-6 hose clamps. Install the provided size-20 hose clamp over the recirculating valve.

NOTE: Trimming roughly 1/2" off the EVAP hose is recommended and will make the installation easier.

- Connect the BLOX Racing inlet hose to the intake system and recirculating valve.

NOTE: Loosening the clamp securing the recirculating valve to the charge pipe may be necessary to ensure proper alignment of the BLOX Racing inlet hose to the recirculating valve.

- Rotate the turbo adapter flange until both holes line up with the holes in turbo inlet. Make sure that these are very close to eliminate stripping threads in next step.
- Secure the turbo adapter to the turbo inlet using the provided M6 bolts with the M5 hex key wrench.

NOTE: Double check that the OEM turbo manifold gasket/O-ring is installed. The rear M6 bolt can be difficult to tighten. Using an M5 socket hex can make this step much easier.

- Double check that the BLOX Racing inlet hose lines up to the intake system, the recirculating valve and turbo adapter. Secure all three connections with the hose clamps.

NOTE: If the recirculating valve to the charge pipe clamp is loose, please tighten at this time.

For 2015-16 models

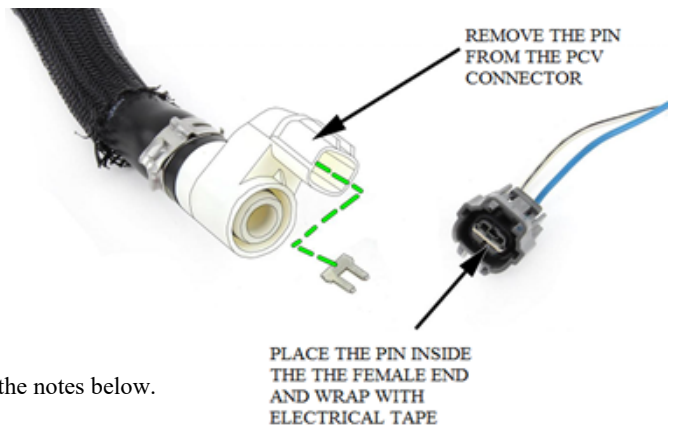
- Install the provided size-6 clamps over the OEM hoses.
- Install the EVAP and crank case hoses to the fittings on the BLOX Racing inlet hose. Secure them using the provided size-6 clamps.

For 2017+ models

- Locate and remove the white plastic PCV diagnosis connector from the crank case hose.

NOTE: The clamp securing the hose is very difficult to remove. Using a small poker tool or needle nose are the best tools to remove this clamp.

- Locate the metal jumper pin inside the white plastic connector. Remove it with pliers.
- Place the male pin into the female plugs on the wire harness side. Use electrical tape to secure the pin and to protect it.
- Use the provided cable tie to secure the plug to the side of the EVAP hose.
- Install the provided size-6 clamps over the OEM hoses.
- Install the EVAP and crank case hoses to the fittings on the BLOX Racing inlet hose. Secure them with the provided size-6 clamps.
- Remove the (2) screws that secure the OEM boost control solenoid to the plastic turbo manifold. Slide the solenoid out of housing. If it seems difficult to remove, spray a small amount of oil around the base.
- Place the nipple of the boost control solenoid into the side fitting on the BLOX Racing turbo inlet hose. Secure it with the provided size-6 clamp. Connect the solenoid.



NOTE: If you're installing an aftermarket boost control solenoid, please refer to the notes below.

- Start your engine and make sure there are no leaks and that the engine idles normally. If the vehicle does not start or idle normally, please double-check all hose and electrical connections.
- Reinstall the lower skid plate and plastic splash guard.

## USING AN AFTERMARKET BOOST CONTROL SOLENOID

- Install the provided 3/8" 90-degree connector and route the vent hose from the boost control solenoid to the fitting.

NOTE: The fitting allows the vent from the boost control solenoid to connect to the BLOX Racing inlet hose without any adapters. A mounting bracket may be needed depending on what other parts are used and installed. Additional hose and fittings may be required for this to reach. Please make sure to check this before getting too far into the installation.