

ONT Shroud Specification



Product Description

The OPT Services developed ONT Shroud, is a bespoke wall mounted bracket that can be used to secure the Nokia 1GbE or the ADTRAN 1GbE ONT units in place. The Shroud consists of a single injection moulded component that clips around the ONT to offer it additional protection.

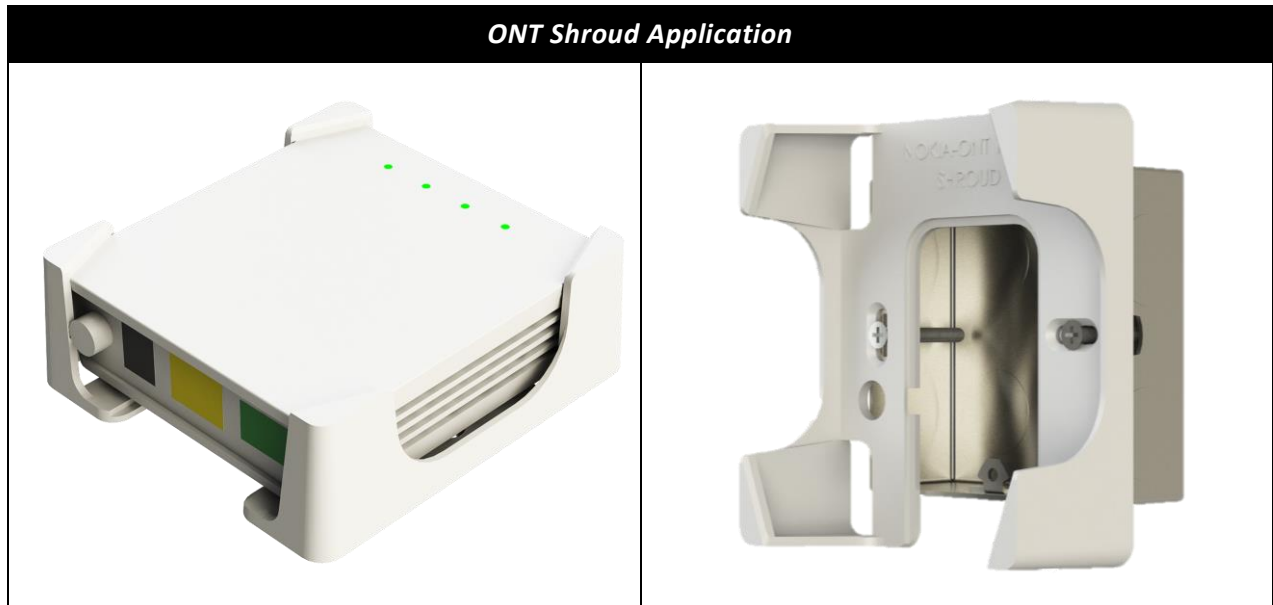
The unit is moulded and packed in the UK.



ONT Shroud Design Features

- Simple cost effective solution
- Single piece injection moulded snap fit design to securely hold the ONT in place
- Simple installation using two screws (included)
- Fixing holes align with BS1363 dimensions (UK single gang electrical plate dimensions)
- Available as single unit or packs of 10
- Support for Nokia or ADTRAN ONTs
- To avoid confusion, the ONT type is moulded into the Shroud
- ONT power cable retention as supplementary security feature
- Can be retro fitted where required
- Moulded in Self-extinguishing ABS

This document is intended for guidance only. Whilst the information it contains is correct at the time of publication, OPT Services UK Limited reserves the right to make changes to this document without notice. This document is protected by copyright (c) OPT Services [2023]. The products depicted herewith are protected by intellectual property rights. Any unauthorised copying of this document or of our products is prohibited and OPT Services UK Limited will take action to prevent any infringement of its rights to claim damages for the loss that it suffers.



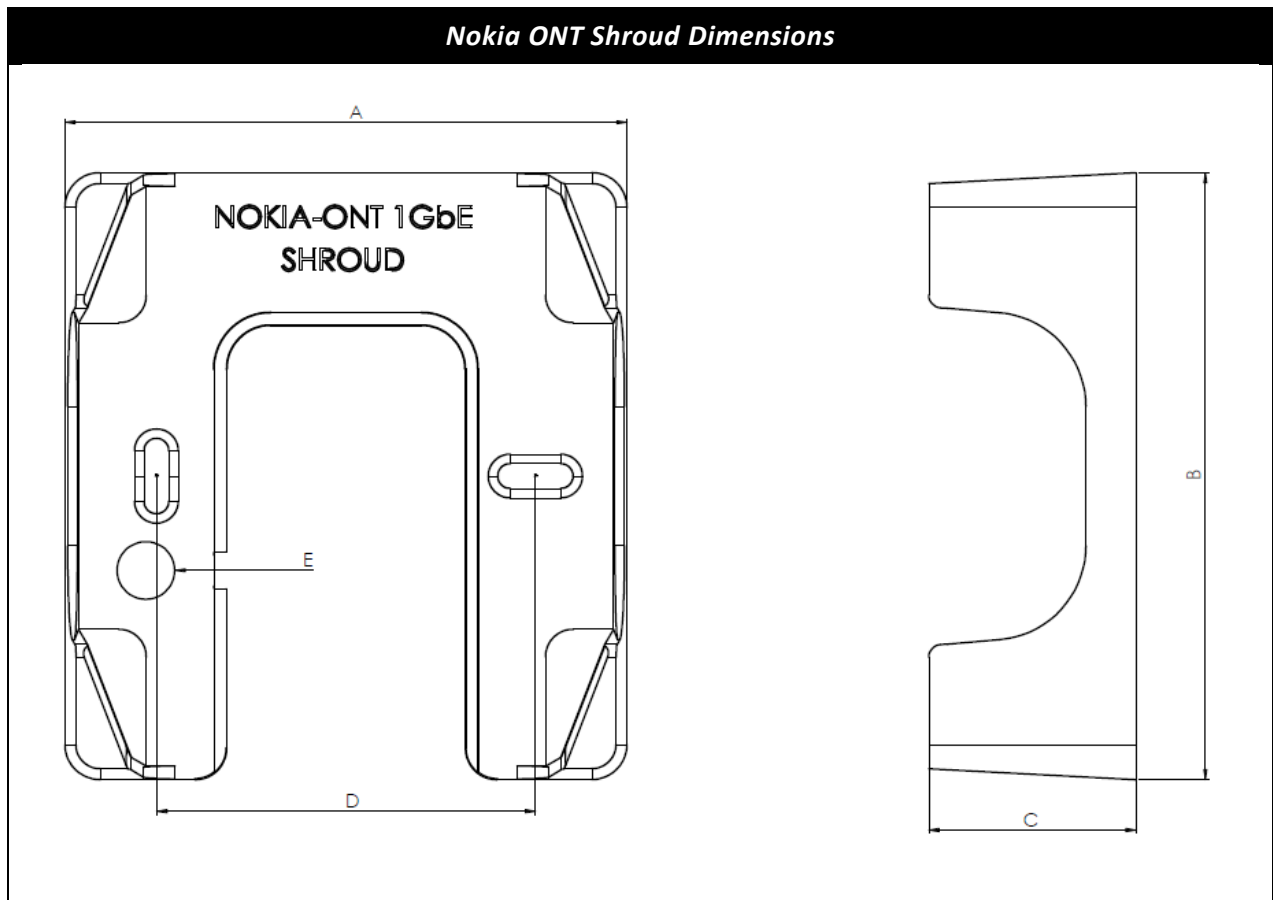
Components & Part Numbers

ONT Shroud Component kits	
OPT-T0302 Nokia	OPT-T0304 ADTRAN

Part Number(s)	Description	BT Item Code
OPT-T0302-S	Nokia ONT Shroud (single)	N/A
OPT-T0302-PK	Nokia ONT Shroud pack of 10	121288
OPT-T0304-S	ADTRAN ONT Shroud (single)	N/A
OPT-T0304-PK	ADTRAN ONT Shroud pack of 10	121289

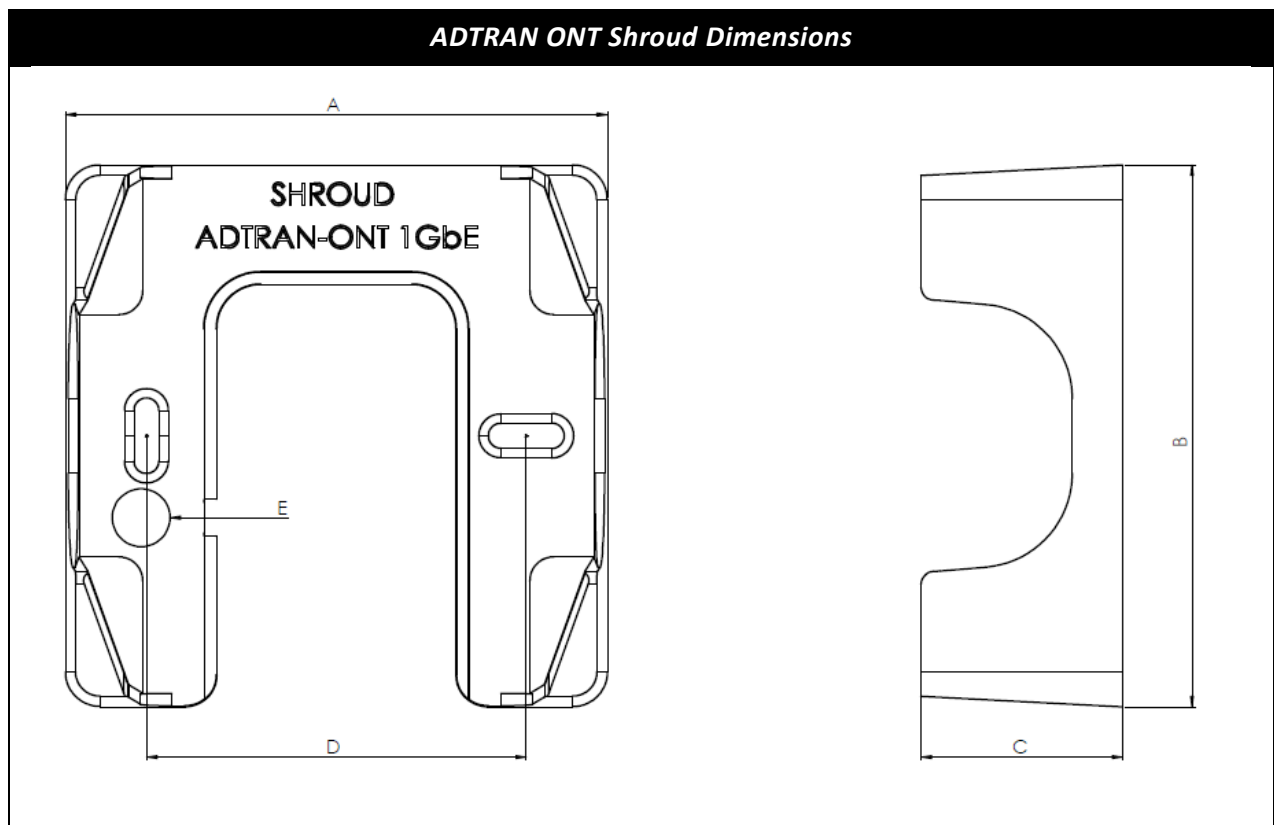
Note: A pair of M3.5 x 25mm screws are included with each Shroud.

Dimensions



Letter	Description	Dimension
A	Footprint Width	89.5mm
B	Footprint Length	96.5mm
C	Footprint Depth	33mm
D*	Fixing Hole Centres	60.3mm
E	Hole for ONT power cable retention	Ø9.2mm

* Standard single gang backbox (Mounting slots)



Letter	Description	Dimension
A	Footprint Width	86mm
B	Footprint Length	86mm
C	Footprint Depth	32mm
D*	Between Centres	60.3mm
E	Hole for ONT power cable retention	Ø9.2mm

* Standard single gang backbox (Mounting slots)

Technical Details

Characteristic	
Installation Environment	Indoor
Temperature Operating range	-25 to +75 °C
Protection Rating	N/A

Component	Colour	Material
ONT Shroud	RAL: 9016 - TRAFFIC WHITE	ABS V0 (Self-extinguishing)
M3.5 x 25mm Fixing Screw	Silver	Steel

Note: the fixing screws could be A2 or BZP, Pozi or slotted depending on availability of stock.

All External surfaces of moulded components have the commercial polish, light spark [30 VDI](#) finish applied. This is to reduce production marks and increase visual appeal and user grip.

This document is intended for guidance only. Whilst the information it contains is correct at the time of publication, OPT Services UK Limited reserves the right to make changes to this document without notice. This document is protected by copyright (c) OPT Services [2023]. The products depicted herewith are protected by intellectual property rights. Any unauthorised copying of this document or of our products is prohibited and OPT Services UK Limited will take action to prevent any infringement of its rights to claim damages for the loss that it suffers.

Packaging & Labelling

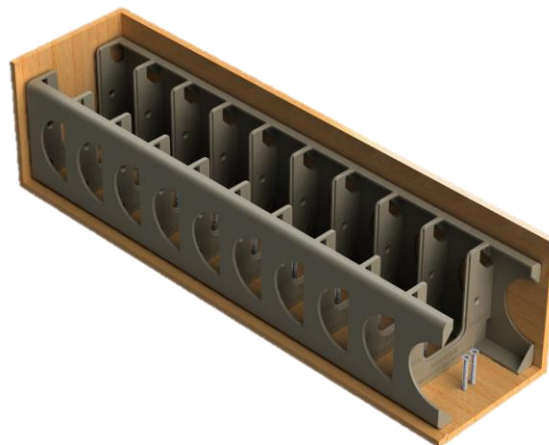
All OPT Services products are dispatched in recyclable materials and clearly labelled with our name, product code and description where applicable. A QR-Code on the label can be used to access the on-line installation instructions, meaning they are readily available at all times.

OPT Services are accredited for Sustainable Packaging and documentation.



10 x Shroud Packaging H x W x D	Dimension
Length	365mm
Width	97mm
Depth	105mm
Thickness	1.5mm Cardboard

- The ONT Shroud is shown below packaged in quantities of 10
- A maximum of 200 packs (i.e. 2000 Shrouds) are packed per pallet box
- Pallet box dimensions are 1200 x 970 x 900mm



Appendix 1 - Abbreviations

Abbreviation	Explanation
ABS	Acrylonitrile Butadiene Styrene - heat-resistant thermoplastic
A2	A type of stainless steel fixing made from two or more metals
BS1363	UK single gang electrical plate dimensions.
BZP	Bright Zinc Plated – Finish applied to Countersunk Machine screws
LSOH-FR	Low Smoke Zero Halogen – Flame Retardant
ONT	Optical Network Termination
RAL	RAL is a colour management system used in Europe
VDI	Verein Deutscher Ingenieure – scale of surface finishes

This document is intended for guidance only. Whilst the information it contains is correct at the time of publication, OPT Services UK Limited reserves the right to make changes to this document without notice. This document is protected by copyright (c) OPT Services [2023]. The products depicted herewith are protected by intellectual property rights. Any unauthorised copying of this document or of our products is prohibited and OPT Services UK Limited will take action to prevent any infringement of its rights to claim damages for the loss that it suffers.



OPT Services are product specialists for fibre networks**R&D Concept to Completion**

- Over 130 years of Experience
- Inhouse Prototyping
- CNC & Injection Moulding
- 3D Print Lab
- 70+ Established Products

Services

- Cable Install & Assessment Site
- Training Studio Facilities
- Graphic Design
- Assembly & Rework
- Cable Winding

Logistics

- Storage & Delivery
- 2800m² of floor space
- 1700+ Pallet Spaces
- PROSKU Management System
- Fleet of Logistics Options

Call us with any queries: 01473 612188*End of Specification*