

# WOW COTTAGE

Porcelain



ARCHITESSA

an Architectural Ceramics brand





WOW COTTAGE Grey Hex



WOW COTTAGE Graphite Hex

WOW COTTAGE

ARCHITESSA  
an Architectural Ceramics brand



WOW COTTAGE White



WOW COTTAGE Sand



WOW COTTAGE Graphite Hex



WOW COTTAGE Cotto Hex

## COLORS

---



White



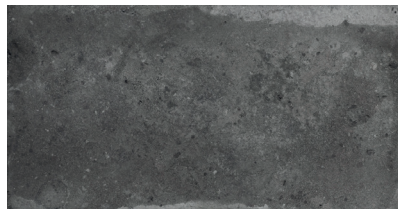
Sand



Cotto



Grey



Graphite



## COLORS

---



White



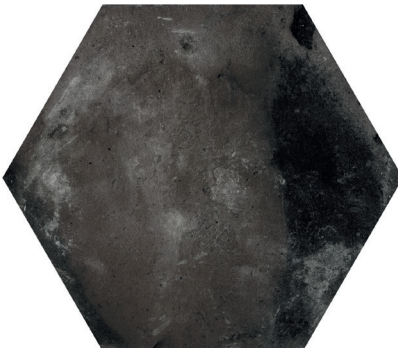
Sand



Cotto



Grey



Graphite

## AVAILABLE SIZES

	FIELD	HEX
	2.7x5.5	5.5x6.3
Cotto	M	M
Graphite	M	M
Grey	M	M
Sand	M	M
White	M	M

M= Matte

Lead times & product availability subject to change. Please contact an Architessa rep for lead times, samples, and availability.

## DESCRIPTION

The WOW COTTAGE Collection is a modern revival of the farmhouse countryside with the durability of porcelain. Whitewashed replicating natural aging of the timeless terracotta in European villas. Available in two shapes: Hexagon and subway, both in porcelain perfect for an outside patio or a kitchen or sunroom. A magical inspiration for today's home with high demands.

## INSTALLATION & MAINTENANCE

WOW COTTAGE may be installed using standard porcelain tile installation methods and materials, as recommended by the Tile Council of North America (TCNA). An Architessa sales representative will advise you on general installation questions

## TECHNICAL INFORMATION

TYPE: GLAZED PORCELAIN  
ORIGIN: SPAIN  
EDGE: PRESSED  
THICKNESS: 8.5MM  
LOOK: COTTO  
SHADE VARIATION: V3 -MODERATE VARIATION  
SURFACE ABRASION: 2-4  
TRAFFIC RATING: HEAVY RESIDENTIAL & LIGHT COMMERCIAL

DCOF: >0.42  
BREAKING STRENGTH: 35 N/MM<sup>2</sup>  
WATER ABSORPTION: <0.5%  
STAIN RESISTANCE: YES  
FROST RESISTANCE: YES  
ENVIRONMENT: 62% RECYCLED CONTENT, EPD, LBC RED LIST FREE

## CONTACT INFORMATION:

[www.architessa.com](http://www.architessa.com)

1.800.287.1742

For general sales inquiries: [sales@architessa.com](mailto:sales@architessa.com)

For commercial & hospitality sample requests: [samples@architessa.com](mailto:samples@architessa.com)

Headquarters: 1803 Research Blvd. Suite 402 Rockville, MD 20850