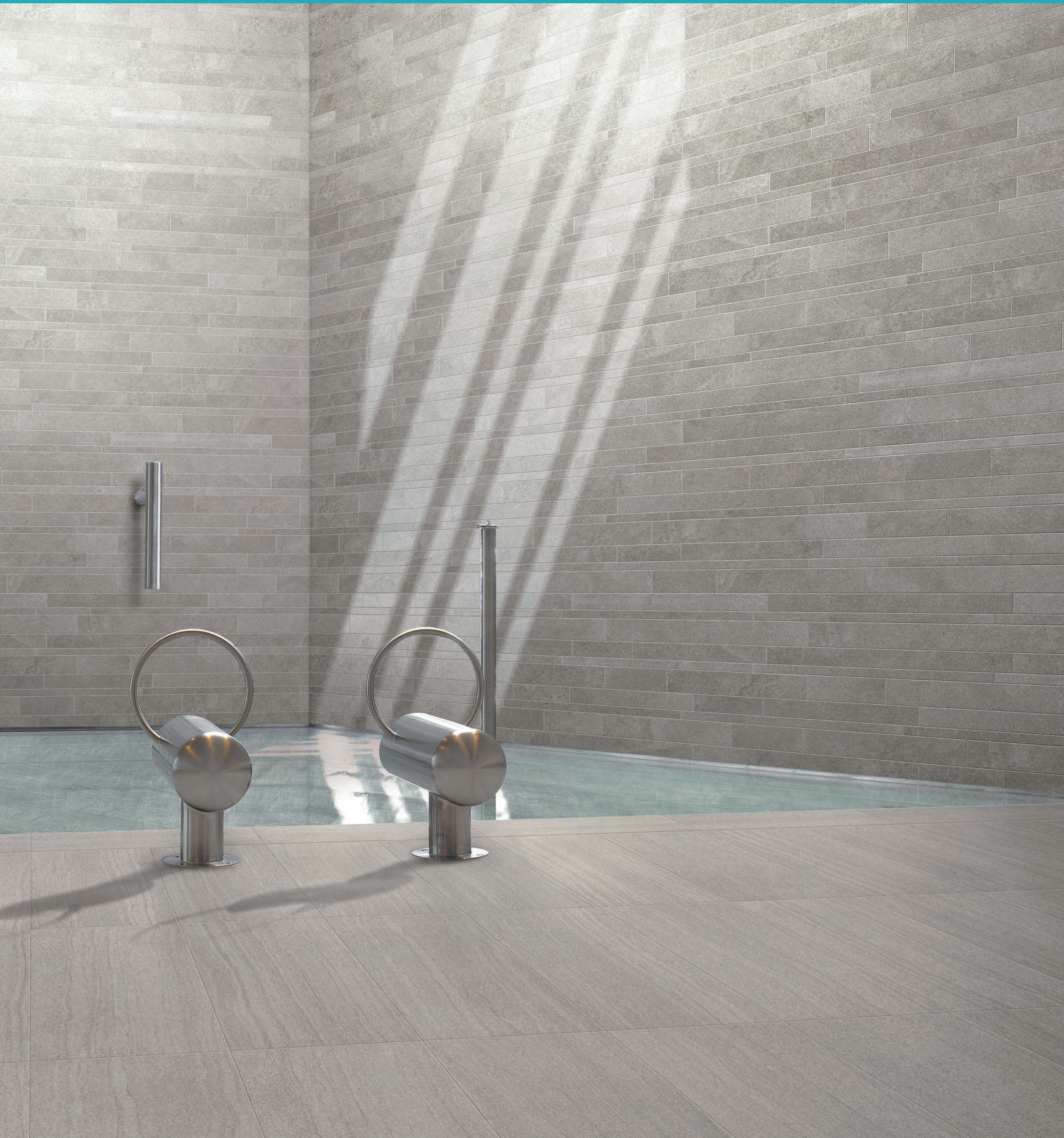


SILK STONE

Porcelain

 ARCHITESSA
an Architectural Ceramics brand





SILK STONE White Contrafalda 24x48, 8x48



SILK STONE Greige Falda 24x48



SILK STONE Sand Contrafalda 24x48



SILK STONE Black 24x48



SILK STONE Grey Falda 24x48

SILK STONE

 ARCHITESSA
an Architectural Ceramics brand



SILK STONE Grey Falda 24x48

www.architessa.com

COLORS



White Falda



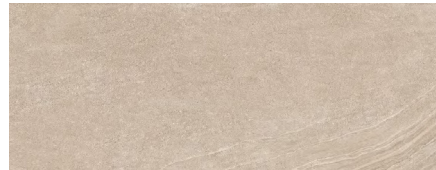
White Controfalda



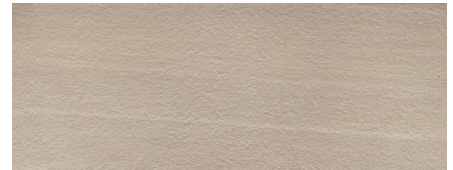
White Strutturato



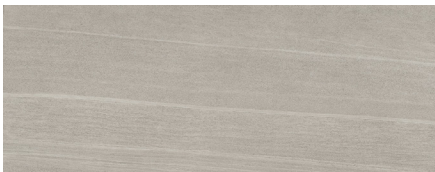
Sand Falda



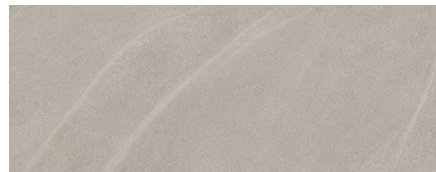
Sand Controfalda



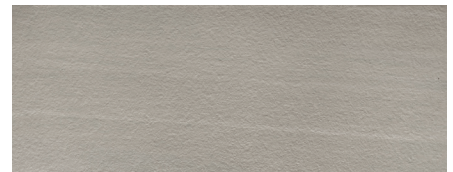
Sand Strutturato



Greige Falda



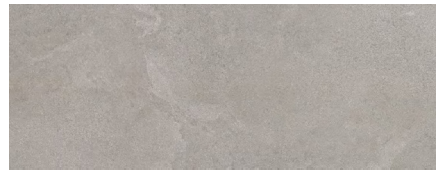
Greige Controfalda



Greige Strutturato



Grey Falda



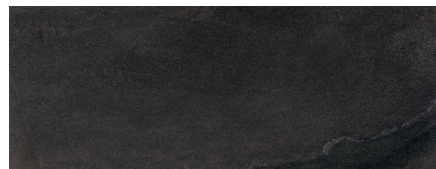
Grey Controfalda



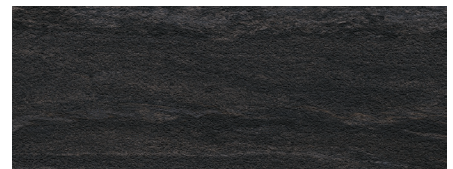
Grey Strutturato



Black Falda



Black Controfalda



Black Strutturato

MOSAIC

LISTELLI



White



Sand



Greige



Grey



Black

2x2 MOSAICS



White



Sand



Greige



Grey



Black

SQUADRO MOSAIC



White



Sand



Greige



Grey



Black

AVAILABLE SIZES

| | FIELD | | | | PLANK | MOSAICS | | | TRIM | | |
|--------------------------------|------------|------------|------------|-------------|------------|---------|--------------|---------------|-----------------|-----------------------------|--------------------------------------------------|
| | 24x48 | 18x36 | 24x24 | 12x24 | 8x48 | 2x2 | 6x48 Squadro | 12x24 Listeli | 3.5x24 Bullnose | 6x12 Cove Min. order qty | 1x6 Cove (In or out corner) Min. order qty |
| White Falda (Vein-cut) | <i>L,N</i> | <i>L,N</i> | <i>L,N</i> | <i>L,N</i> | <i>L,N</i> | N | L | | | N* | N |
| White Contrafalda (Cross-cut) | <i>L,N</i> | <i>L,N</i> | <i>L,N</i> | <i>L*,N</i> | <i>L,N</i> | | | N/L | <i>L,N</i> | N | N |
| White Strutturato | N | | | N | | | | | | | |
| Sand Falda (Vein-cut) | <i>L,N</i> | <i>L,N</i> | <i>L,N</i> | <i>L,N</i> | <i>L,N</i> | N | L | | | N | N |
| Sand Contrafalda (Cross-cut) | <i>L,N</i> | <i>L,N</i> | <i>L,N</i> | <i>L,N</i> | <i>L,N</i> | | | N/L | <i>L,N</i> | N | N |
| Sand Strutturato | N | | | N | | | | | | | |
| Greige Falda (Vein-cut) | <i>L,N</i> | <i>L,N</i> | <i>L,N</i> | <i>L,N</i> | <i>L,N</i> | N | L | | | N | N |
| Greige Contrafalda (Cross-cut) | <i>L,N</i> | <i>L,N</i> | <i>L,N</i> | <i>L,N</i> | <i>L,N</i> | | | N/L | <i>L,N</i> | N | N |
| Greige Strutturato | N | | | N | | | | | | | |
| Grey Falda (Vein-cut) | <i>L,N</i> | <i>L,N</i> | <i>L,N</i> | <i>L,N*</i> | <i>L,N</i> | N | L | | | N | N |
| Grey Contrafalda (Cross-cut) | <i>L,N</i> | <i>L,N</i> | <i>L,N</i> | <i>L,N</i> | <i>L,N</i> | | | N/L | <i>L,N</i> | N | N |
| Grey Strutturato | N | | | N | | | | | | | |
| Black Falda (Vein-cut) | <i>L,N</i> | <i>L,N</i> | <i>L,N</i> | <i>L,N</i> | <i>L,N</i> | N | L | | | N | N |
| Black Contrafalda (Cross-cut) | <i>L,N</i> | <i>L,N</i> | <i>L,N</i> | <i>L,N</i> | <i>L,N</i> | | | N/L | <i>L,N</i> | N | N |
| Black Strutturato | N | | | N | | | | | | | |

L=Lappato, N=Natural

Italicized items are special order from Italy with extended lead times. Please consult an Architessa sales rep for sample & product availability.

Lead times for specialty & non-stocked items varies depending on product ordered, quantity, and destination. Please contact Architessa to determine the lead time to order samples and material.

Please note that the minimum order is 500 for the 6x12 Cove Base

DESCRIPTION

The SILK STONE collection combines technology and creativity to provide natural stone-look tiles with endless and subtle variation—experience architecture without constraints with our SILK STONE collection.

INSTALLATION & MAINTENANCE

SILK STONE may be installed using standard porcelain tile installation methods and materials, as recommended by the Tile Council of North America (TCNA). An Architessa sales representative will advise you on general installation questions.

TECHNICAL INFORMATION

TYPE: COLOR BODY PORCELAIN

ORIGIN: ITALY

EDGE: RECTIFIED

THICKNESS: 9.5MM

LOOK: MARBLE, MIXED STONE

SHADE VARIATION: V3 - MODERATE

SURFACE ABRASION: N/A

TRAFFIC RATING: HEAVY COMMERCIAL

DCOF: ≥ 0.50 , ≥ 0.65 STRUTTURATO

BREAKING STRENGTH: 400 LBS

WATER ABSORPTION: $\leq 0.5\%$

STAIN RESISTANCE: YES

FROST RESISTANCE: YES

ENVIRONMENT: 12% PRE-CONSUMER RECYCLED

CONTENT, GREENGUARD GOLD CERTIFIED, EPD

CONTACT INFORMATION:

www.architessa.com

1.800.287.1742

For general sales inquiries: sales@architessa.com

For commercial & hospitality sample requests: samples@architessa.com

Headquarters: 1803 Research Blvd. Suite 402 Rockville, MD 20850