

# SETON

Porcelain

 ARCHITESSA  
an Architectural Ceramics brand





SETON Amaranto, Calce Matte 3x8





SETON Corda Matte 3x8, Carbone Matte, Glossy 3x8





SETON Amaranto, Carbone Matte 3x8, Amaranto Plisse 3x8





SETON Lavanda Plisse 3x8

## MATTE

---



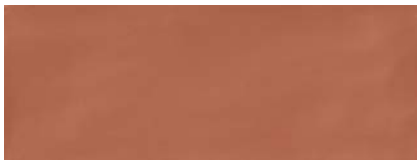
Calce



Corda



Cipria



Amaranto



Senape



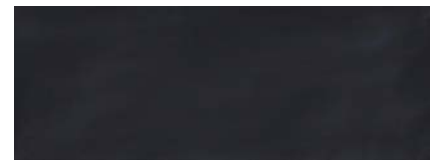
Petrolio



Lavanda



Piombo



Carbone

## GLOSSY



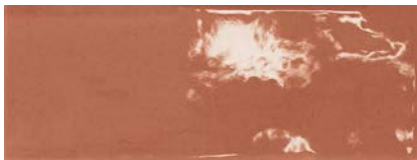
Calce



Corda



Cipria



Amaranto



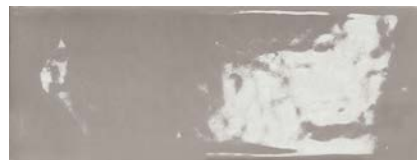
Senape



Petrolio



Lavanda



Piombo



Carbone

## PLISSE



Calce



Corda



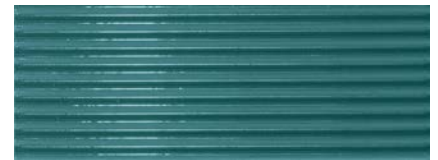
Cipria



Amaranto



Senape



Petrolio



Lavanda



Piombo



Carbone



## AVAILABLE SIZES

	FIELD	DECO	TRIM
	3x8	3x8 Plisse	3x8 BN
Amaranto	M, G	G	M, G
Calce	M, G	G	M, G
Carbone	M, G	G	M, G
Cipria	M, G	G	M, G
Corda	M, G	G	M, G
Lavanda	M, G	G	M, G
Petolio	M, G	G	M, G
Piombo	M, G	G	M, G
Senape	M, G	G	M, G

M= Matte, G= Glossy

Lead times & product availability subject to change. Please contact an Architessa rep for lead times, samples, and availability.

## DESCRIPTION

SETON porcelain tiles offer a burst of color for playful wall applications. Embrace the expressive power of color with 9 vibrant tiles in matte and lux. The ridged Plisse Decor tile adds extra dimension.

## INSTALLATION & MAINTENANCE

SETON may be installed using standard porcelain installation methods and materials, as recommended by the Tile Council of North America (TCNA). An Architessa sales representative will advise you on general installation questions.

## TECHNICAL INFORMATION

TYPE: GLAZED PORCELAIN

ORIGIN: ITALY

EDGE: PRESSED

THICKNESS: 9.5MM, 11.5MM (DECO)

LOOK: BRICK

SHADE VARIATION: V2 - SLIGHT VARIATION

DEEP ABRASION:  $\leq 175$

TRAFFIC RATING: COMMERCIAL; RESIDENTIAL;  
WALL ONLY

DCOF:  $\geq 0.42$  MATTE

BREAKING STRENGTH: 400LBS

WATER ABSORPTION:  $< 0.5\%$

STAIN RESISTANCE: YES, CLASS 5

FROST RESISTANCE: YES

ENVIRONMENT: GREENGUARD GOLD CERTIFIED,  
5% RECYCLED CONTENT

## CONTACT INFORMATION:

[www.architessa.com](http://www.architessa.com)

1.800.287.1742

For general sales inquiries: [sales@architessa.com](mailto:sales@architessa.com)

For commercial & hospitality sample requests: [samples@architessa.com](mailto:samples@architessa.com)

Headquarters: 1803 Research Blvd. Suite 402 Rockville, MD 20850