

SCRAFFITO

Ceramic

 ARCHITESSA



FRIGIDAIRE







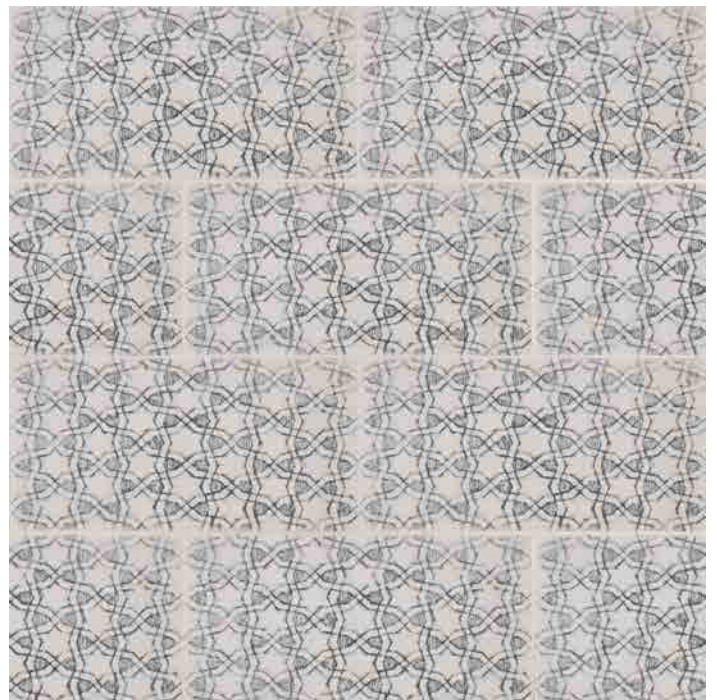
G2-104 Scraffito E W88



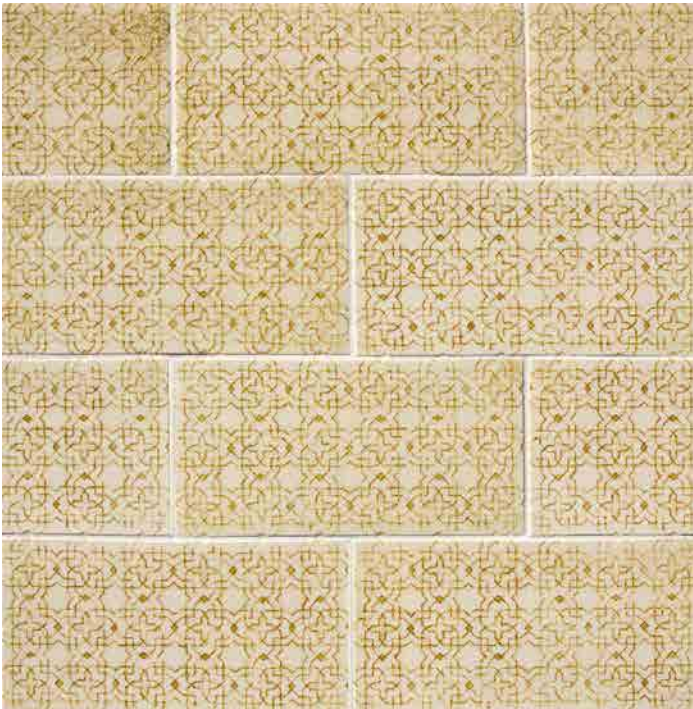
G2-108 Scraffito H S14



G2-105 Scraffito E W86, PW89 w/Charcoal



G2-112 Scraffito G PW5 w/Silver



G2-78 Scraffito B PW20 w/Golden



G2-110 Scraffito H R350 and C600



G2-111 Scraffito F PW79 w/Mushroom, C54



G2-74 Scraffito D PW40 w/Thyme



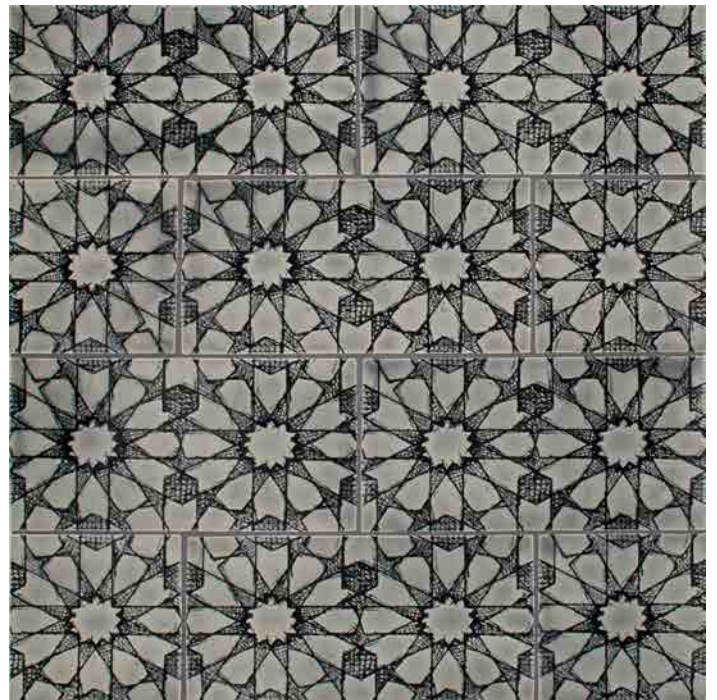
G2-72 Scraffito C PW1 w/Silver



G2-70 Scraffito D W90

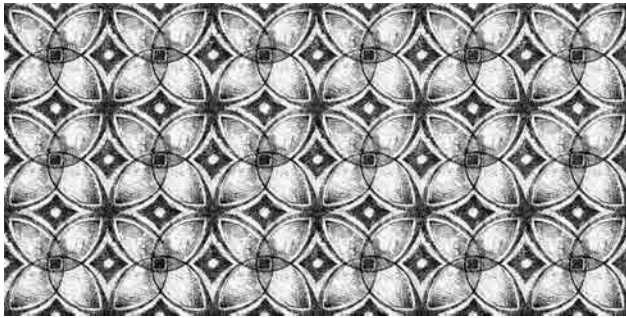


G2-107 Scraffito F PW1 w/Charcoal

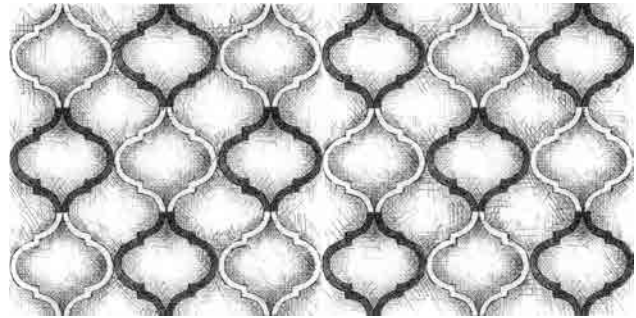


G2-109 Scraffito H PW89 w/Charcoal

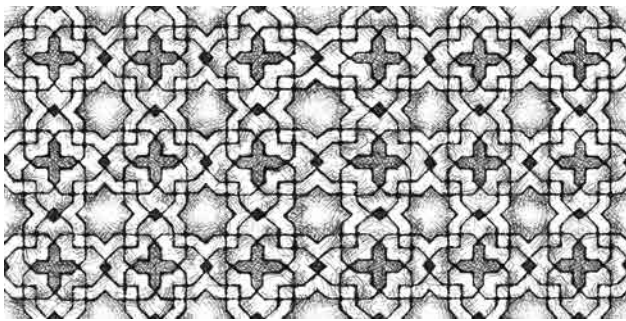
5X10 PATTERNS



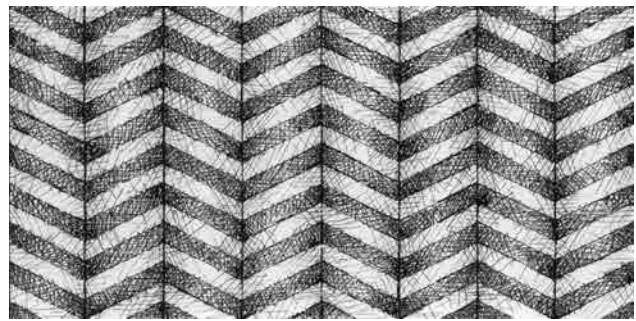
SC-510A Scraffito A 5x10



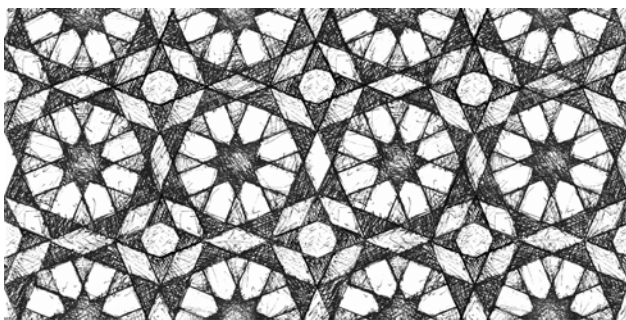
SC-510E Scraffito E 5x10
(*pattern is directional)



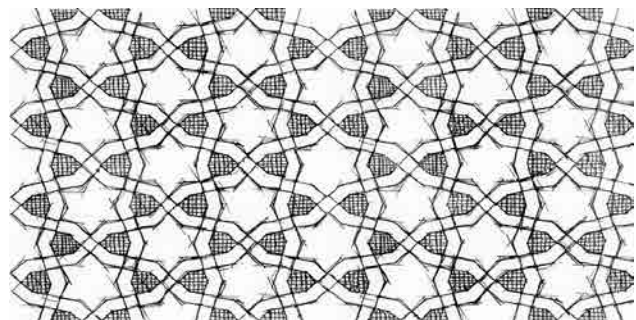
SC-510B Scraffito B 5x10



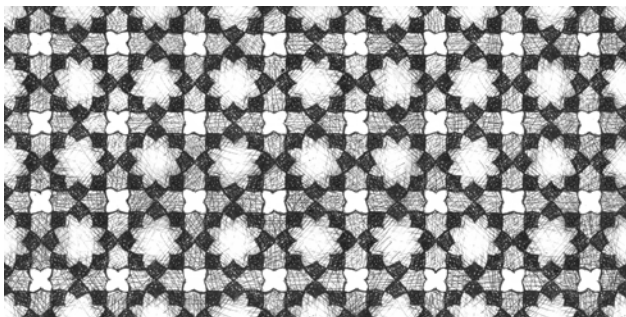
SC-510F Scraffito F 5x10
(*pattern is directional)



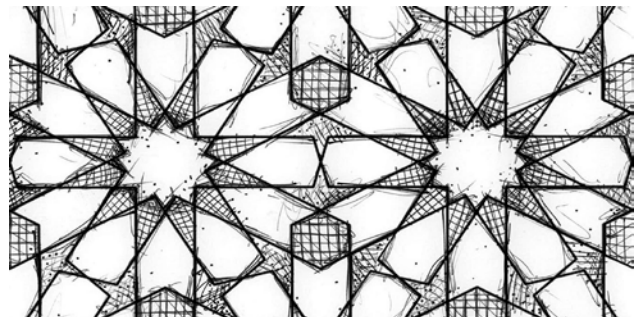
SC-510C Scraffito C 5x10



SC-510G Scraffito G 5x10

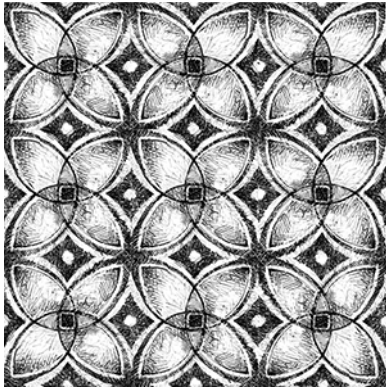


SC-510D Scraffito D 5x10

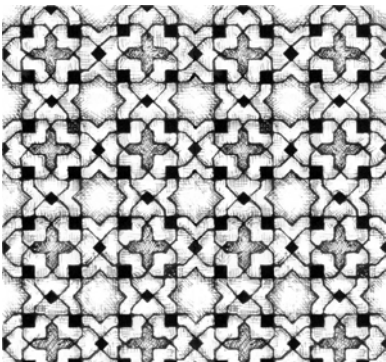


SC-510H Scraffito H 5x10

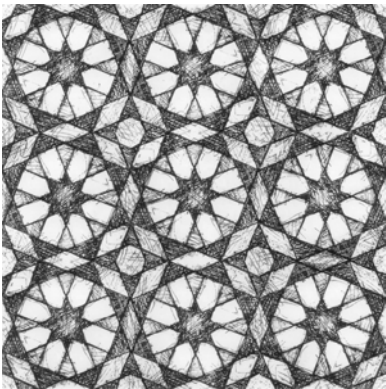
8X8 PATTERNS



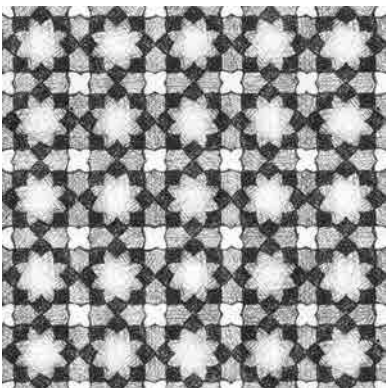
SC-88XA Scraffito A 8x8



SC-88XB Scraffito B 8x8



SC-88XC Scraffito C 8x8



SC-88XD Scraffito D 8x8



POLYWASH

Enhance the design elements of any Scraffito pattern by using our handpainted, Polywash technique.

Choose from any of the 16 gorgeous accent colors shown below. Each pattern will hold the color in its own way, fine lines hold less color and deep lines hold more.

The palette below uses W1 as the over glaze which is clear, allowing these accent colors to shine and sparkle. Changing the over-glaze adds a wash of color over the whole tile. With a darker over-glaze some of the accent colors can be obscured. The more contrast between the accent and the over glaze the better the pattern will stand out.

Polywash tiles are hand crafted and hand painted. Range and variation in color is to be expected.



Polywash 1 Palette

CONTACT INFORMATION:

www.architessa.com

1.800.287.1742

For general sales inquiries: sales@architessa.com

For commercial & hospitality sample requests: samples@architessa.com

Headquarters: 1803 Research Blvd. Suite 402 Rockville, MD 20850