

SALITA

Porcelain



ARCHITESSA





SALITA Sand 12x24



SALITA Storm 12x24



SALITA Twilight 12x24



SALITA Storm 24x48

COLORS



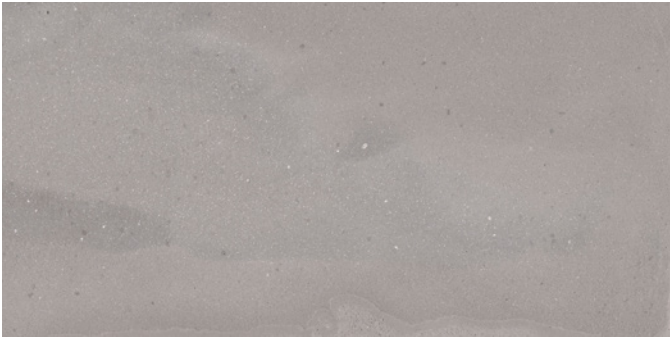
Mist



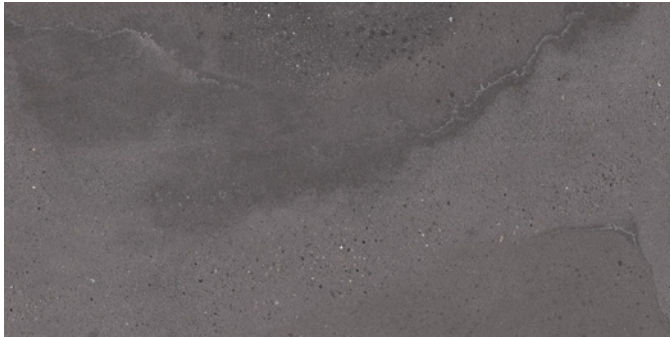
Sand



Sunlight



Storm



Twilight

AVAILABLE SIZES

	FIELD		MOSAIC	TRIM
	24x48	12x24	2x2	3x12 BN
Mist	N	N	N	N
Sand	N	N	N	N
Storm	N	N	N	N
Sunlight	N	N	N	N
Twilight	N	N	N	N

N= Natural

Lead times & product availability subject to change. Please contact an Architessa rep for lead times, samples, and availability.

DESCRIPTION

Italian Riviera sand is the canvas. The sun, clouds and sea are the palette. Nature is the artist constantly creating. The extraordinary beauty surrounding SALITA has inspired a sophisticated collection of tiles. Fascinating design replicates grains of beach sand. Visual texture gives a subtle perception of movement. Various sizes and mosaics invite you to expand your horizons. The shifting beauty of SALITA becomes a lasting design statement. Elevate your private paradise with style and personality.

INSTALLATION & MAINTENANCE

SALITA may be installed using standard porcelain installation methods and materials, as recommended by the Tile Council of North America (TCNA). An Architessa sales representative will advise you on general installation questions.

TECHNICAL INFORMATION

TYPE: COLOR BODY GLAZED PORCELAIN
 ORIGIN: USA
 EDGE: RECTIFIED
 THICKNESS: 8MM
 LOOK: SANDSTONE
 SHADE VARIATION: V3 - MODERATE VARIATION
 SURFACE ABRASION: 3
 TRAFFIC RATING: COMMERCIAL

DCOF: ≥ 0.42
 BREAKING STRENGTH: ≥ 275 LBF
 WATER ABSORPTION: $\leq 0.5\%$
 STAIN RESISTANCE: YES, CLASS A
 FROST RESISTANCE: YES
 ENVIRONMENT: USA MADE

CONTACT INFORMATION:

www.architessa.com

1.800.287.1742

For general sales inquiries: sales@architessa.com

For commercial & hospitality sample requests: samples@architessa.com

Headquarters: 1803 Research Blvd. Suite 402 Rockville, MD 20850

