

OSAKA
Porcelain



ARCHITESSA

an Architectural Ceramics brand





OSAKA Fracture Ash 24x24



OSAKA Washi Mix White 8x8 / Ash 24x24

OSAKA

 ARCHITESSA
an Architectural Ceramics brand



OSAKA Cream 24x24

www.architessa.com

COLORS



Cream



Fracture Cream



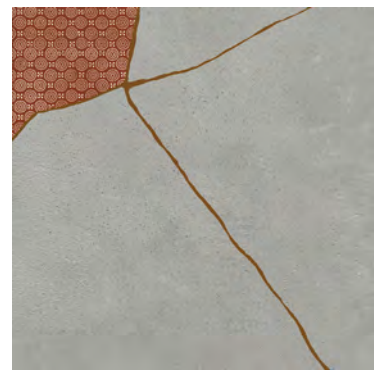
Washi Fracture Cream



Ash



Fracture Ash



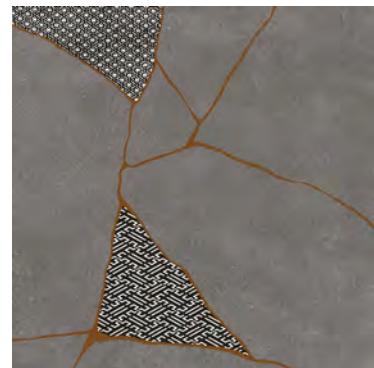
Washi Fracture Ash



Steel



Fracture Steel



Washi Fracture Steel



Charcoal

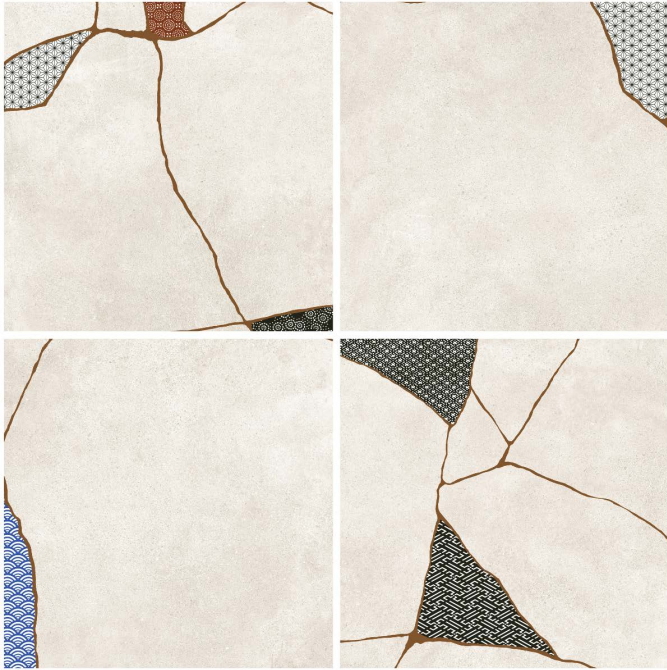


Fracture Charcoal

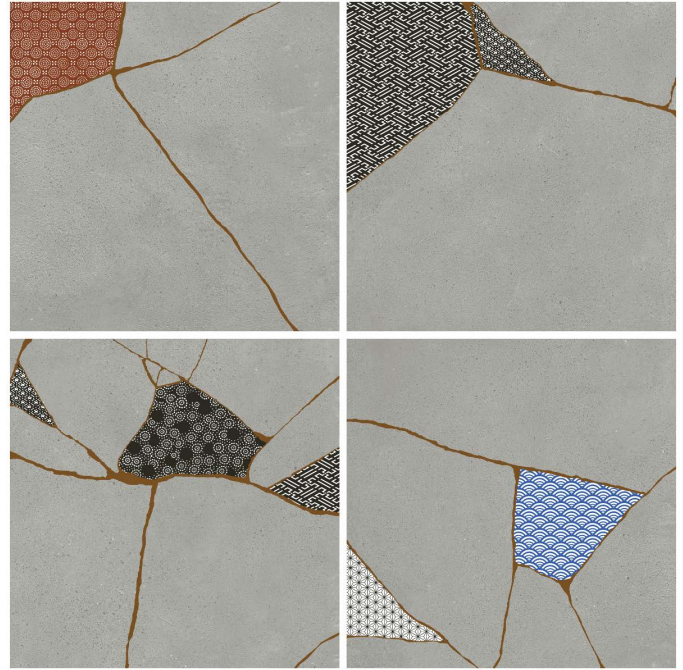


Washi Fracture Charcoal

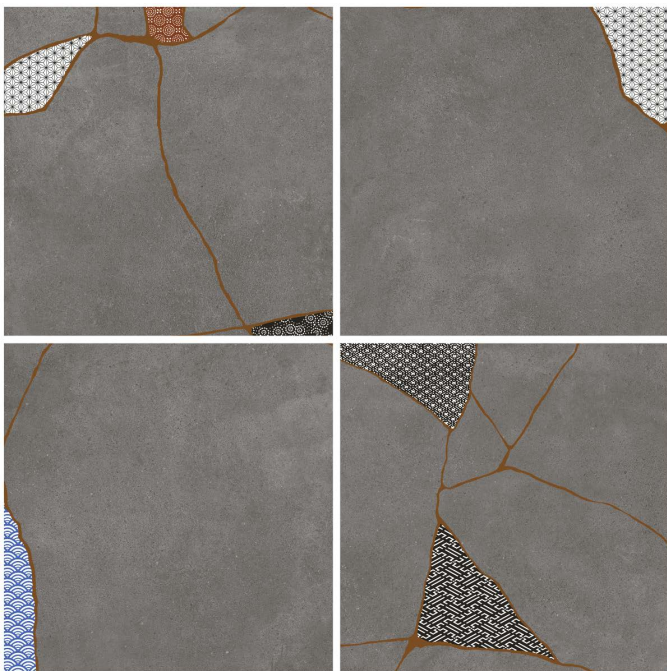
WASHI FRACTURE



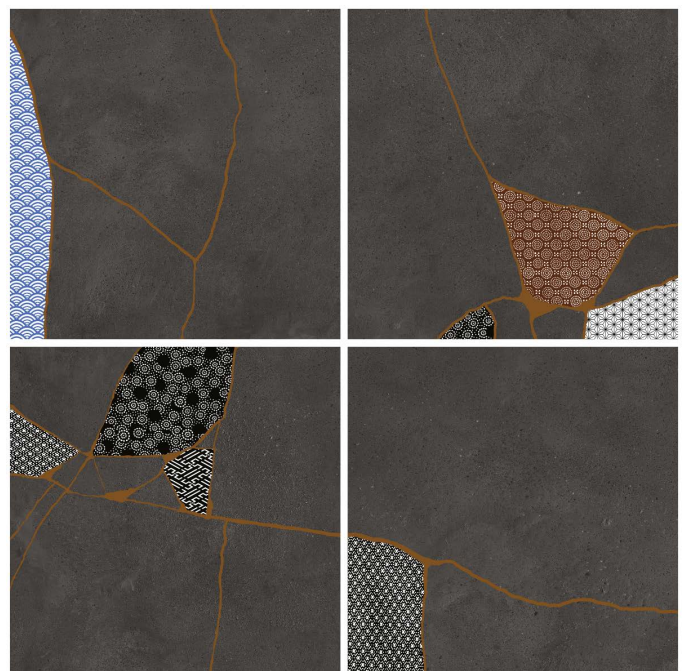
Washi Fracture Cream Panel



Washi Fracture Ash Panel

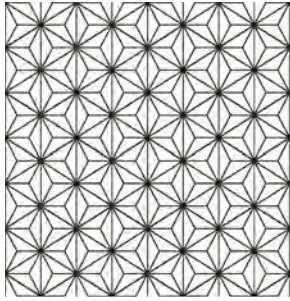


Washi Fracture Steel Panel



Washi Fracture Charcoal Panel

COLORS - DECO



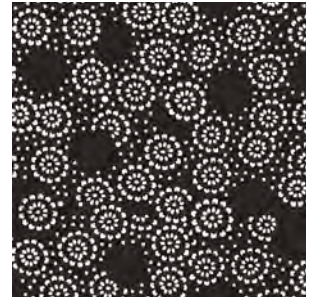
Washi White



Washi Terra



Washi Cobalt



Washi Black

COLORS - MIXED DECO



Washi-Mix Terra



Washi-Mix Cobalt



Washi-Mix White

AVAILABLE SIZES

	FIELD			
	36x36	24x48	24x24	8x8
Ash	N	N	N*	N
Charcoal	N	N	N*	N
Cream	N	N	N*	N
Steel	N	N	N*	N
Fracture Ash		N	N*	
Fracture Charcoal		N	N*	
Fracture Cream		N	N*	
Fracture Steel		N	N*	
Washi Black				G
Washi Cobalt				G*

	FIELD			
	36x36	24x48	24x24	8x8
Washi Terra				G
Washi White				G*
Washi-Mix Cobalt				G
Washi-Mix Terra				G
Washi-Mix White				G
Washi-Fracture Ash			N	
Washi-Fracture Charcoal			N	
Washi-Fracture Cream			N	
Washi-Fracture Steel			N	

N= Natural, G= Glossy | *Stock Sizes

Lead times for specialty & non-stocked items varies depending on product ordered, quantity, and destination. Please contact Architessa to determine the lead time to order samples and material.

DESCRIPTION

OSAKA concrete-look ceramic tiles are inspired by the Japanese art of repairing broken pottery with golden lacquer. OSAKA celebrates the organic sophistication of re-composition with golden veining across its textured surfaces.

INSTALLATION & MAINTENANCE

OSAKA may be installed using standard porcelain installation methods and materials, as recommended by the Tile Council of North America (TCNA). An Architessa sales representative will advise you on general installation questions.

TECHNICAL INFORMATION

ORIGIN: ITALY
 AVAILABLE FINISHES: MATTE
 TYPE: PORCELAIN
 EDGE: RECTIFIED
 LOOK: CONCRETE LOOK
 APPLICATION: WALL & FLOOR
 USE: RESIDENTIAL & COMMERCIAL
 THICKNESS: 10MM

COLOR VARIATION: NATURAL = V2,
 FRACTURE = V3, WASHI FRACTURE = V4
 PEI SCALE: N/A
 DCOF: >0.42 (SOLID FIELD)
 BREAKING STRENGTH: N/A
 WATER ABSORPTION: <0.05
 STAIN RESISTANCE: YES
 FROST RESISTANCE: YES

CONTACT INFORMATION:

www.architessa.com

1.800.287.1742

For general sales inquiries: sales@architessa.com

For commercial & hospitality sample requests: samples@architessa.com

Headquarters: 1803 Research Blvd. Suite 402 Rockville, MD 20850