

ORLA
Porcelain

 **ARCHITESSA**





ORLA White 24x48, Vertical 12x24



ORLA Sand 24x48, Vertical Sand 12x24



ORLA Grey 24x48



ORLA Stone Grey 12x24, Vertical Grey 12x24

COLORS



White



White - 2x2



Sand



Sand - 2x2



Grey



Grey - 2x2



Dark Grey



Dark Grey - 2x2

COLORS



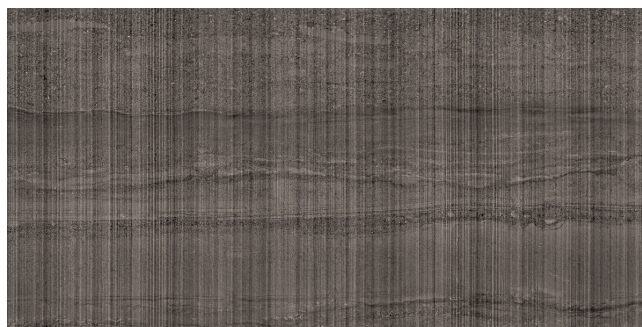
White Vertical



Sand Vertical



Grey Vertical



Dark Grey Vertical

AVAILABLE SIZES

	FIELD		MOSAIC
	24x48	12x24	2x2
Dark Grey	N	N	N
Grey	N	N	N
Sand	N	N	N
White	N	N	N

N= Natural

Lead times & product availability subject to change. Please contact an Architessa rep for lead times, samples, and availability.

DESCRIPTION

Passionate research and continuous technological innovation evolve in a material able to meet the most demanding market requests, in order to offer design solutions in keeping with modern architectural contexts. The ceramic traditions, artisanal know-how and excellence of Italian design are brought together in a cutting-edge production process to create a porcelain stoneware collection featuring meticulous attention to detail and realistic graphics.

INSTALLATION & MAINTENANCE

ORLA may be installed using standard porcelain tile installation methods and materials, as recommended by the Tile Council of North America (TCNA). An Architessa sales representative will advise you on general installation questions.

TECHNICAL INFORMATION

TYPE: PORCELAIN
 ORIGIN: USA
 EDGE: RECTIFIED
 THICKNESS: 8.5MM, 9.5MM (24x48)
 SHADE VARIATION: V2- SLIGHT VARIATION
 SURFACE ABRASION: N/A
 TRAFFIC RATING: COMMERCIAL, RESIDENTIAL

DCOF: ≥ 0.50
 BREAKING STRENGTH: ≥ 250 LBS
 WATER ABSORPTION: $\geq 0.5\%$
 STAIN RESISTANCE: YES - CLASS 5
 FROST RESISTANCE: YES
 ENVIRONMENT: N/A

CONTACT INFORMATION:

www.architessa.com

1.800.287.1742

For general sales inquiries: sales@architessa.com

For commercial & hospitality sample requests: samples@architessa.com

Headquarters: 1803 Research Blvd. Suite 402 Rockville, MD 20850

