

ARCHITECTURAL  
CERAMICS 

P A S S I O N  
F O R  
D E S I G N

MOSARTE<sup>®</sup>

Made in Brazil

H A N D M A D E  
T O U C H  
T H E S O U L

We are a Brazilian company synonymous with innovation in specialty coverings and awarded for our design. The company was founded in 1995 and since then we have been working on the basis of expertise and talent of our team to create products that enhance rooms, making them unique and pleasant to live in.

This is our motto, inspired by our own employees, who see the word “design” as one of the greatest values of the pieces they produce with the care of craftsmen. And it is this position that is turning us into a reference in the creation of differentiated and innovative products.

**“OUR PRODUCTS ARE MADE  
BY HAND TO TOUCH THE SOUL.”**

Marco Aurélio Sedrez, **President.**



# FIJI BAY



**Product:** Fiji Bay Preto

**Format (cm):** 30 x 31.2 x 3.5

**Format (inches):** 11.8 x 12.3 x 1.4

**Code:** 702232

**Material:** Brazilian Slate

**Finishing:** Natural



product  
design award

2018 ■



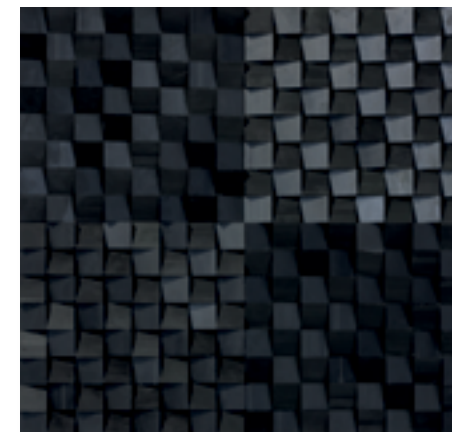
Fiji Bay Preto | Project: Guerra e Siarcos Arquitetura . Photo: Mariana Boro



Ópus Preto



## Ó P U S P R E T O



**Product:** Ópus Preto

**Format (cm):** 28.8 x 28.8 x 1.1

**Format (inches):** 11.3 x 11.3 x 0.4

**Code:** 702148

**Material:** Brazilian Slate

**Finishing:** Natural







Black Rust

## BLACK RUST



**Product:** Black Rust

**Format (cm):** 30 x 30 x 1.1

**Format (inches):** 11.8 x 11.8 x 0.4

**Code:** 702284

**Material:** Brazilian Slate and Metal

**Finishing:** Natural and Metal





## A R A S



**Product:** Aras Marrom  
**Format (cm):** 28.7 x 19 x 1  
**Format (inches):** 11.3 x 7.5 x 0.4  
**Code:** 701970  
**Material:** Marble and Wood  
**Finishing:** Natural



**Product:** Aras Preto  
**Format (cm):** 28.7 x 19 x 1.3  
**Format (inches):** 11.3 x 7.5 x 0.5  
**Code:** 701958  
**Material:** Brazilian Slate  
**Finishing:** Natural



## M A G M A



**Product:** Magma Nero  
**Format (cm):** 28.7 x 29.45 x 1.3  
**Format (inches):** 11.3 x 11.6 x 0.5  
**Code:** 701272  
**Material:** Brazilian Slate  
**Finishing:** Rustic







Mondrian Platinum

## MONDRIAN



**Product:** Mondrian Platinum

**Format (cm):** 29 x 29 x 2

**Format (inches):** 11.4 x 11.4 x 0.8

**Code:** 702239

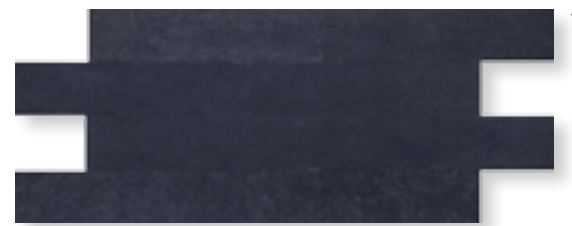
**Material:** Marble

**Finishing:** Polished





# WATERLOO



\* **Product:** Waterloo Preto  
**Format (cm):** 7.25 x 29.5 x 1  
**Format (inches):** 2.9 x 11.6 x 0.4  
**Code:** 702245  
**Material:** Brazilian Slate  
**Finishing:** Natural



\* **Product:** Waterloo Mix Branco  
**Format (cm):** 7.25 x 29.5 x 1.8  
**Format (inches):** 2.9 x 11.6 x 0.6  
**Code:** 702246  
**Material:** Marble  
**Finishing:** Polished



\*These products come on 2.9" x 11.6" bars. The pictures are just suggestions on how they could be layered.



Waterloo Preto



Alvorada Mix Bege | Project: **Vanessa Larré**



## ALVORADA



**Product:** Alvorada Mix Bege

**Format (cm):** 26.2 x 26 x 1.5

**Format (inches):** 10.3 x 10.2 x 0.6

**Code:** 701665

**Material:** Marble

**Finishing:** Natural and Polished



## DÓRICO



**Product:** Dórico Clássico

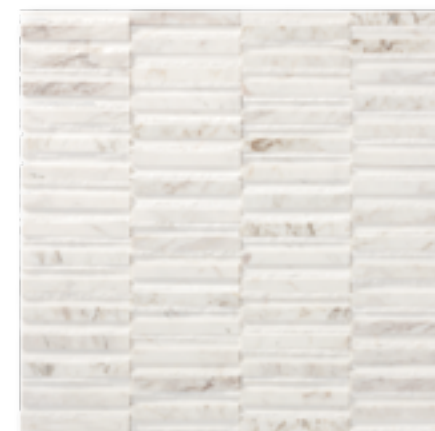
**Format (cm):** 28.5 x 29 x 1

**Format (inches):** 11.2 x 11.4 x 0.3

**Code:** 702173

**Material:** Marble

**Finishing:** Natural and Polished



**Product:** Dórico Piguês Macchiato

**Format (cm):** 28.5 x 29 x 1

**Format (inches):** 11.2 x 11.4 x 0.3

**Code:** 702172

**Material:** Marble

**Finishing:** Natural and Polished





# CUBUS



**Product:** Cubus Thassos

**Format (cm):** 29 x 29 x 1.5

**Format (inches):** 11.4 x 11.4 x 0.6

**Code:** 701569

**Material:** Marble

**Finishing:** Polished



# VIEW



**Product:** View Macchiato

**Format (cm):** 30.1 x 20 x 0.9

**Format (inches):** 11.9 x 7.9 x 0.4

**Code:** 702281

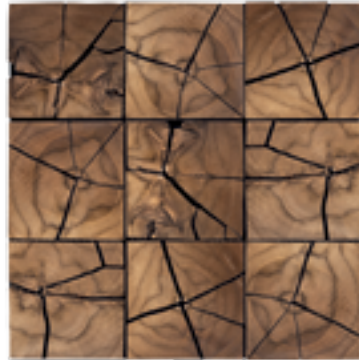
**Material:** Marble

**Finishing:** Polished





# CRASH



**Product:** Crash

**Format (cm):** 27.8 x 27.8 x 1

**Format (inches):** 10.9 x 10.9 x 0.4

**Code:** 702314

**Material:** Wood

**Finishing:** Natural



GERMAN  
DESIGN  
AWARD  
SPECIAL  
2016





Niterói Legno | Project: Daniela Colnaghi . Casa Cor SP



## NITERÓI



**Product:** Niterói Legno

**Format (cm):** 29 x 29 x 2

**Format (inches):** 11.4 x 11.4 x 0.8

**Code:** 701651

**Material:** Wood

**Finishing:** Natural



**Product:** Niterói Piguês

**Format (cm):** 29 x 29 x 1.5

**Format (inches):** 11.4 x 11.4 x 0.6

**Code:** 701650

**Material:** Marble

**Finishing:** Polished





# METRÓPOLE



**Product:** Metrópole Legno  
**Format (cm):** 26 x 26.4 x 2.6  
**Format (inches):** 10.2 x 10.4 x 1  
**Code:** 701653  
**Material:** Wood  
**Finishing:** Natural



**Product:** Metrópole Thassos  
**Format (cm):** 27 x 28.8 x 3.4  
**Format (inches):** 10.6 x 11.3 x 1.3  
**Code:** 701652  
**Material:** Marble  
**Finishing:** Natural



**Product:** Metrópole Preto  
**Format (cm):** 27 x 28.8 x 3.4  
**Format (inches):** 10.6 x 11.3 x 1.3  
**Code:** 701961  
**Material:** Brazilian Slate  
**Finishing:** Natural



Metrópole Preto





Serros Off Thassos | Project: **Alessandra Becker** . Photo: Claus Weihermann



## SERROS



**Product:** Serros Natura

**Format (cm):** 29.7 x 10.8 x 3.8

**Format (inches):** 11.7 x 4.3 x 1.5

**Code:** 701967

**Material:** Wood

**Finishing:** Natural



**Product:** Serros Off Thassos

**Format (cm):** 29.7 x 10.2 x 3.6

**Format (inches):** 11.7 x 4.3 x 1.4

**Code:** 701952

**Material:** Marble

**Finishing:** Natural





# CANDANGO



**Product:** Candango Grigio  
**Format (cm):** 29 x 26.1 x 1.4  
**Format (inches):** 11.4 x 10.3 x 0.5  
**Code:** 701827  
**Material:** Marble  
**Finishing:** Natural



**Product:** Candango Crema  
**Format (cm):** 29 x 26.1 x 1.4  
**Format (inches):** 11.4 x 10.3 x 0.5  
**Code:** 701957  
**Material:** Marble  
**Finishing:** Natural



**Product:** Candango Off Thassos  
**Format (cm):** 29 x 26.1 x 1.4  
**Format (inches):** 11.4 x 10.3 x 0.5  
**Code:** 701956  
**Material:** Marble  
**Finishing:** Natural



Candango Off Thassos . Photo: Claus Weihermann





Fabros | Project: **Oscar Mikail** . Photo: Carlos Piratininga

## FREEDOM AT YOUR HANDS

Semplice + Simples is a breakthrough system that facilitates the layout of special coverings. This new technology brings in the back of each piece an extremely resistant adhesive, spaced from the wall by deformable spheres.

So it is possible to move the piece during installation, before full adherence.

The result is a more dynamic project done quicker, cheaper and in a cleaner manner.

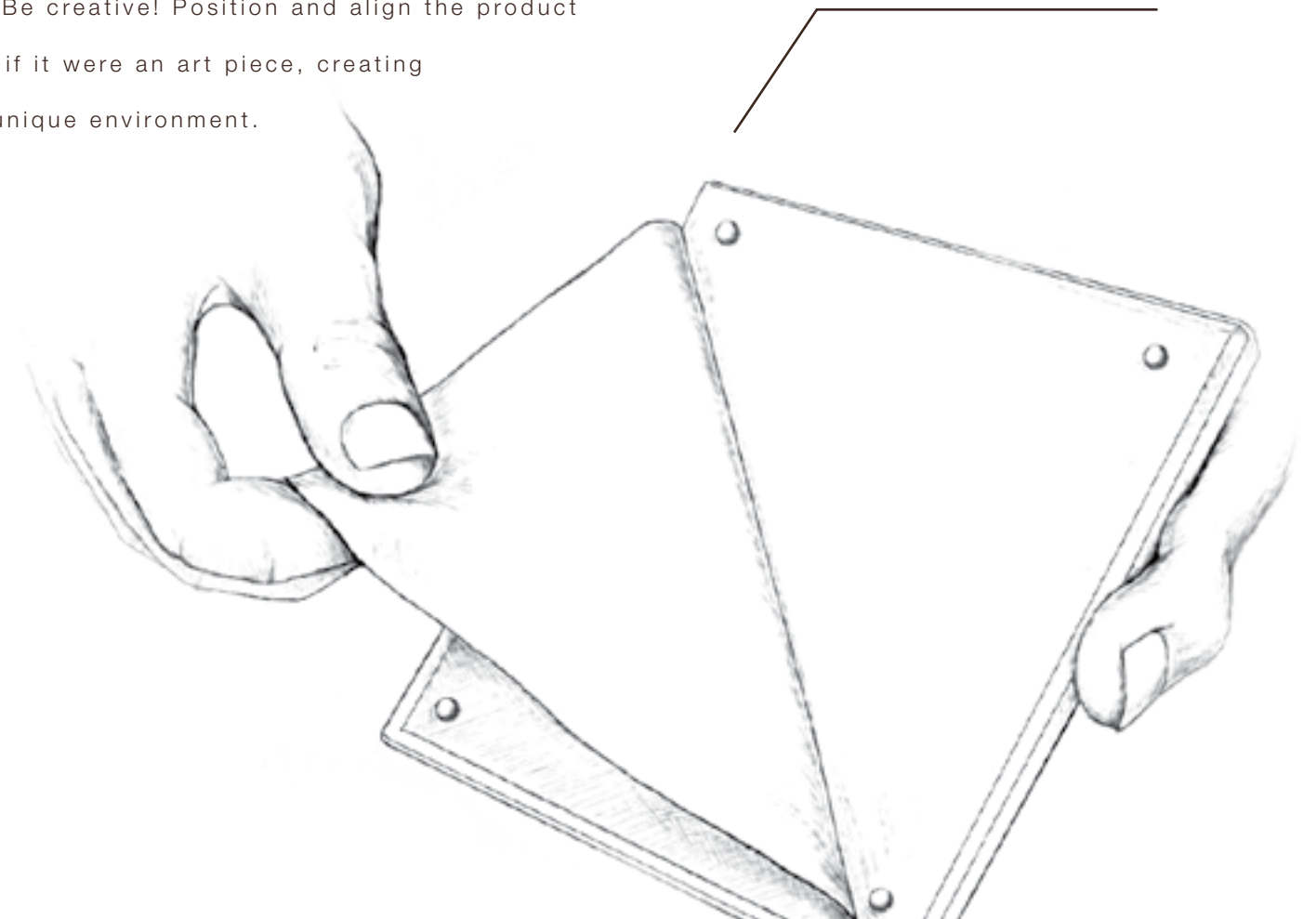
semplice

## HOW TO

Covering with Semplice is an amazing experience! Just follow these three quick steps:

- 1) Remove the protective film of the verse to unveil the wonders of this technology.
- 2) If it is necessary to cut some of the pieces, remove the film after the cut so as not to reveal the charm ahead of time.
- 3) Be creative! Position and align the product as if it were an art piece, creating a unique environment.

**THESE ARE THE DEFORMABLE SPHERES THAT ALLOW YOU TO FIND THE IDEAL POSITION FOR YOUR MOSARTE.**





## PÉTLAS



**Product:** Pétlas Semplice  
**Format (cm):** 26.7 x 13.4 x 0.7  
**Format (inches):** 10.5 x 5.3 x 0.3  
**Code:** 740010  
**Material:** Wood  
**Finishing:** Natural



## FABROS



**Product:** Fabros Semplice Preto  
**Format (cm):** 12.7 x 14.7 x 0.95  
**Format (inches):** 5 x 5.8 x 0.4  
**Code:** 740061  
**Material:** Brazilian Slate  
**Finishing:** Natural



Pétlas Semplice | Project: **Claudia Elias** . Casa Cor SP

## DESIGN AWARDS



product  
design award

2014



German  
Design Award

SPECIAL  
MENTION 2015

Our strength as a global design reference is evident in the mentions received in international publications and prestigious awards that we were given in recent years, such as Brazil Design Award, German Design Award and iF Design Award.



## INSTALLATION INSTRUCTIONS

1. Check to see if the product can be applied in the area you have chosen. The specifications for each product are available at [www.mosarte.com.br](http://www.mosarte.com.br).
2. Upon delivery, check for any broken material or any other nonconformity. If there is any fault, it is necessary to make the appropriate notations on the invoice to guarantee replacement of the product.
3. It is very important to hire a qualified professional to handle such products.
4. Make a panel on the floor using pieces from different boxes in the batch, in order

to compare covering shades and fittings. Distribute the pieces in a balanced and harmonious manner. Only seat products if this panel is conforming; products settled are products accepted by the client.

5. Carefully follow the steps available in the instruction manual that came with your Mosarte box.
6. It is very important to use the Personal Protective Equipment (PPE), such as gloves and glasses, to install the products.

**The complete Mosarte Brazil collection is available by request. Visit [www.mosarte.com.br](http://www.mosarte.com.br) to learn more about our products. Contact [usa@mosarte.com.br](mailto:usa@mosarte.com.br) for special requests.**

## CAPTIONS



Product available in Semplice technology



Not recommended for application on the ground



Not recommended for outdoor application



Inappropriate for areas in frequent contact with water



Inappropriate for areas in contact with high temperatures



Inappropriate for use in swimming pools

The images are only a reference, since the products vary in shape and are out of proportion.

@mosarte



/mosarte



/mosarte



/mosarte



/empresamosarte





---

## WEBSITE LINKS

[www.architecturalceramics.com/catalogs](http://www.architecturalceramics.com/catalogs)

PLEASE NOTE THIS LINK IS CASE SENSITIVE

## CONTACT INFORMATION:

[www.architecturalceramics.com](http://www.architecturalceramics.com)

1.800.287.1742

For general sales inquiries: [sales@architecturalceramics.com](mailto:sales@architecturalceramics.com)

For commercial & hospitality sample requests: [samples@architecturalceramics.com](mailto:samples@architecturalceramics.com)

Headquarters: 800 E Gude Dr Suite F Rockville, MD 20850