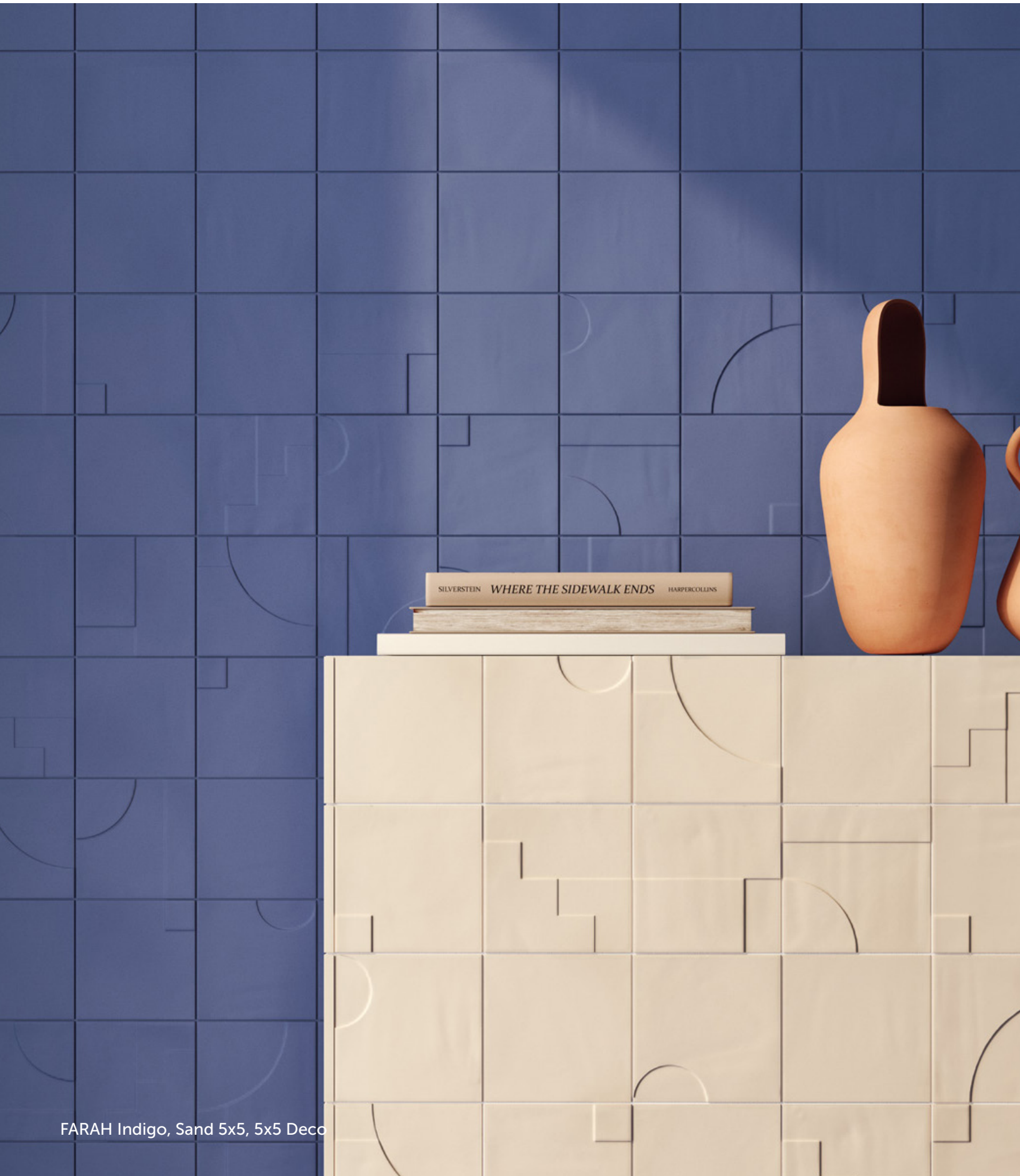


FARAH

Ceramic

 ARCHITESSA





FARAH Indigo, Sand 5x5, 5x5 Deco



FARAH Talc 5x5, Sky 5x5, 5x5 Deco



FARAH Terracotta 5x5, 5x5 Deco



FARAH Sky 5x5, 5x5 Deco

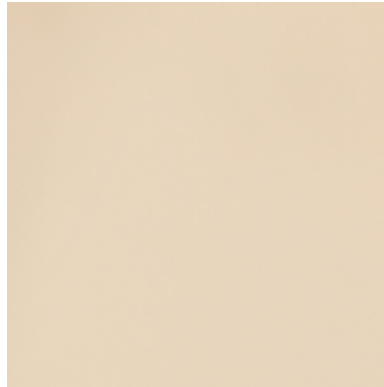


FARAH Sand 5x5, 5x5 Deco

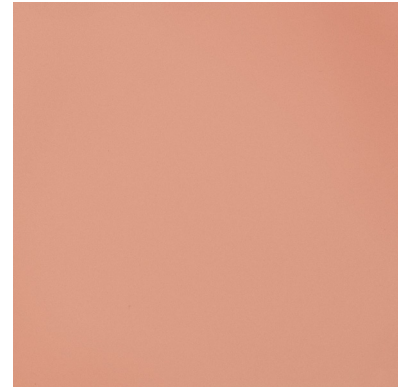
WALL



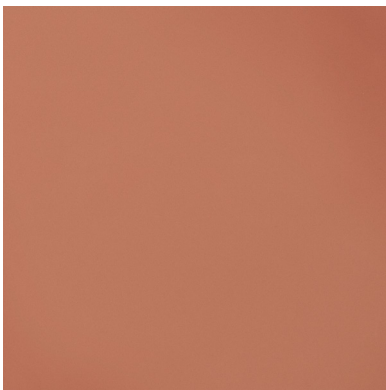
Talc



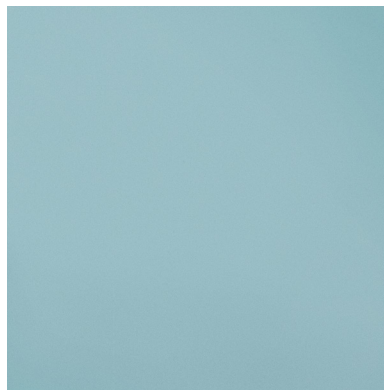
Sand



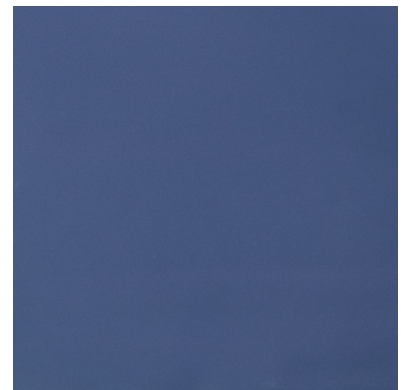
Teja



Terracotta



Sky



Indigo

DECO



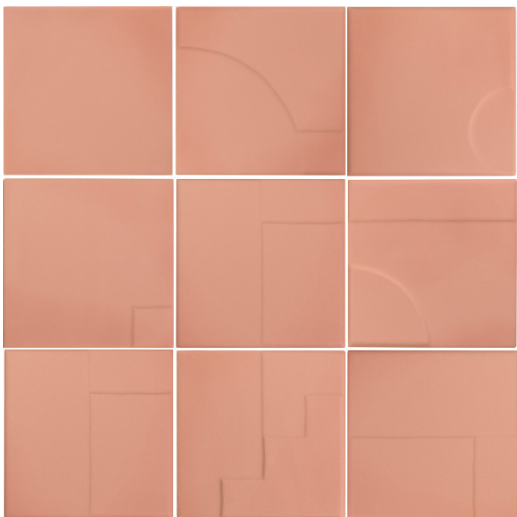
Talc

(6 Faces, Random Mix)



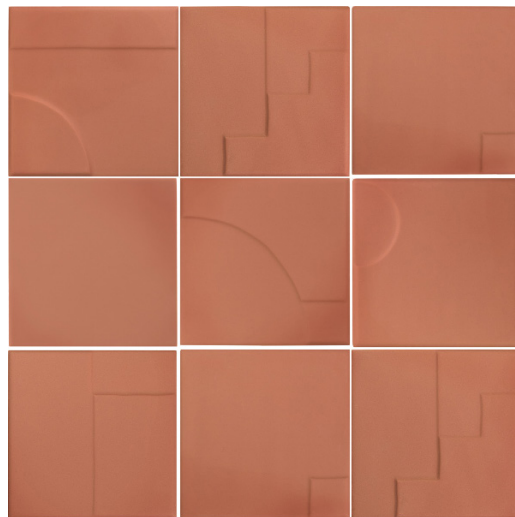
Sand

(6 Faces, Random Mix)



Teja

(6 Faces, Random Mix)



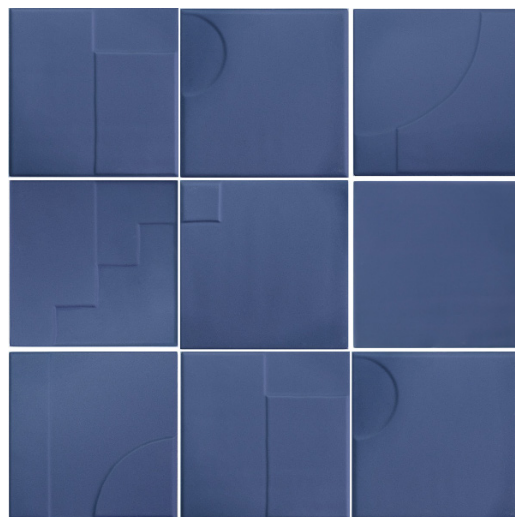
Terracotta

(6 Faces, Random Mix)



Sky

(6 Faces, Random Mix)



Indigo

(6 Faces, Random Mix)

AVAILABLE SIZES

	WALL	DECO	TRIM
	5x5	5x5	0.3x5
Indigo	M	M	M
Sand	M	M	M
Sky	M	M	M
Talc	M	M	M
Teja	M	M	M
Terracotta	M	M	M

M= Matte

Lead times & product availability subject to change. Please contact an Architessa rep for lead times, samples, and availability.

DESCRIPTION

Experience the timeless charm of FARAH ceramic tiles, a tribute to the classic Spanish architecture of “La muralla roja” by Ricardo Bofill in Calpe, Alicante. These tiles draw inspiration from Arab Mediterranean architecture, offering a modern interpretation of a traditional Kasbah. FARAH tiles captivate with their striking geometry, featuring cubic lines and a rich palette of vibrant colors. The interior spaces they create are almost labyrinthine, reminiscent of seaside charm. Our ceramic vision reimagines this architectural tradition with smooth, matte finishes that don’t reflect light, symbolizing modernity in design.

INSTALLATION & MAINTENANCE

FARAH may be installed using ceramic installation methods and materials, as recommended by the Tile Council of North America (TCNA). An Architessa sales representative will advise you on general installation questions.

TECHNICAL INFORMATION

TYPE: CERAMIC
 ORIGIN: SPAIN
 EDGE: PRESSED
 THICKNESS: 8.5MM, 8.5-10MM (DECO), 8MM (TRIM)
 LOOK: 3D LOOK, COTTO
 SHADE VARIATION: V2 - SLIGHT VARIATION
 SURFACE ABRASION: N/A
 TRAFFIC RATING: WALL ONLY

DCOF: N/A
 BREAKING STRENGTH: 15 N/MM²
 WATER ABSORPTION: >10%
 STAIN RESISTANCE: CLASS 5
 FROST RESISTANCE: NO
 ENVIRONMENT: RECYCLED CONTENT ≥20%,
 39% RECYCLED CONTENT, EPD, LBC RED LIST FREE

CONTACT INFORMATION:

www.architessa.com

1.800.287.1742

For general sales inquiries: sales@architessa.com

For commercial & hospitality sample requests: samples@architessa.com

Headquarters: 1803 Research Blvd. Suite 402 Rockville, MD 20850