

# EUPHORIA

Ceramic



ARCHITESSA

an Architectural Ceramics brand





HANDMADE  
BY ARTISANS  
IN COLORADO



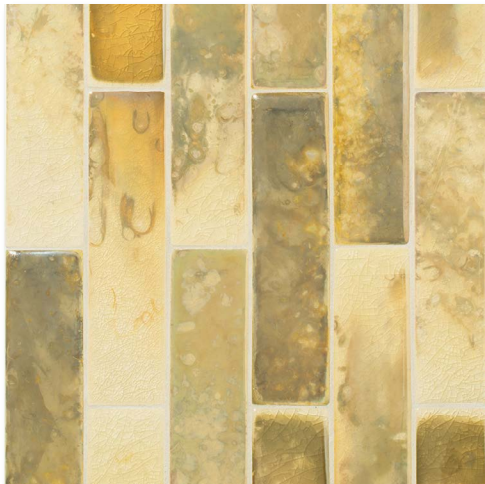
PHOTO TOP: 2 x 8 IN MARGARITAVILLE  
RIGHT: 2 x 8 IN VOO DOO



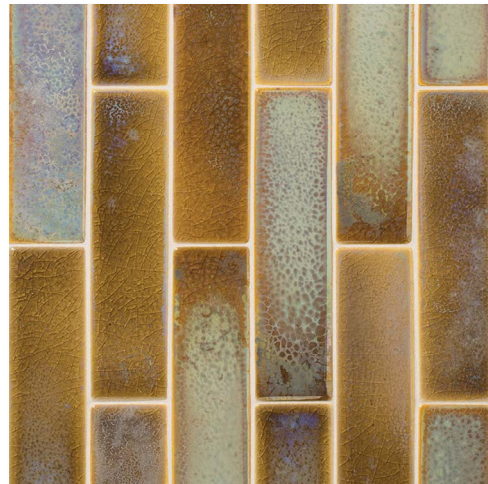
CLOUD NINE | CRACKLE



TRES CHIC | CRACKLE



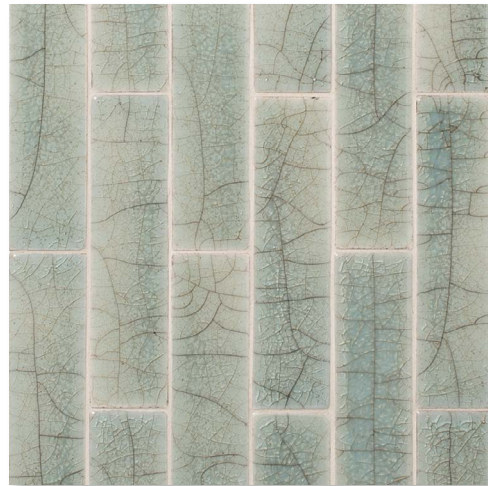
YELLOW SUBMARINE | LUSTER



AUTUMN LEAVES | LUSTER



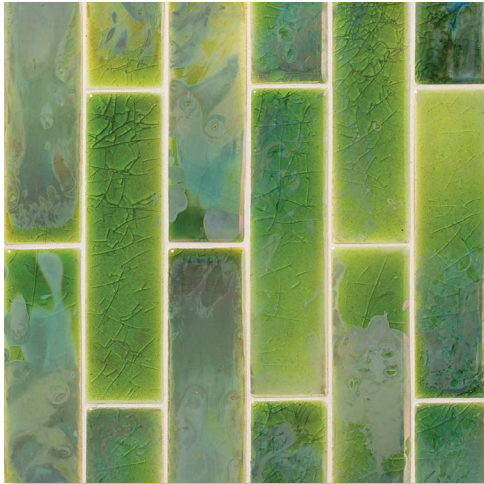
MELLOW YELLOW | CRACKLE



SUMMER BREEZE | CRACKLE

Euphoria glazes are subject to **EXTREME** range of color variation where no two pieces are exactly alike. An experienced craftsman should lay out tiles prior to setting to allow for blending of the color range.

# EUPHORIA



MARGARITAVILLE | LUSTER



PARROT CAY | LUSTER



RAINFOREST | LUSTER



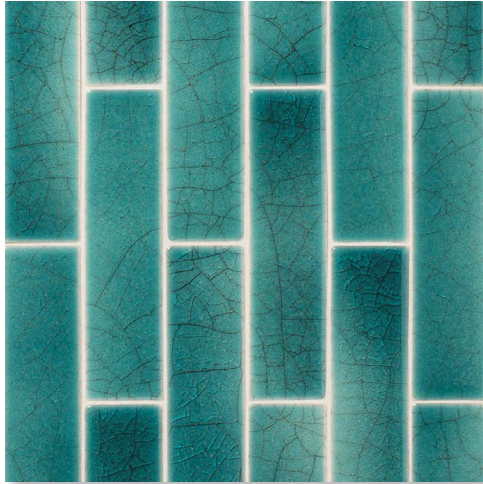
RUBY SKY | LUSTER



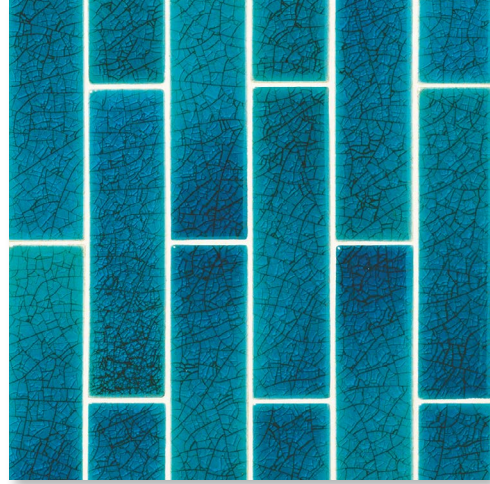
CREEKSIDE | CRACKLE



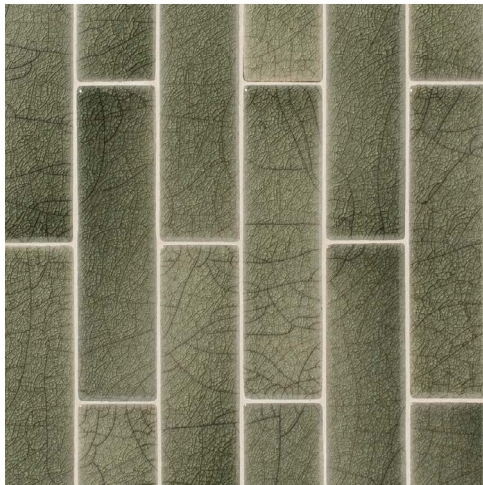
TAPESTRY | LUSTER



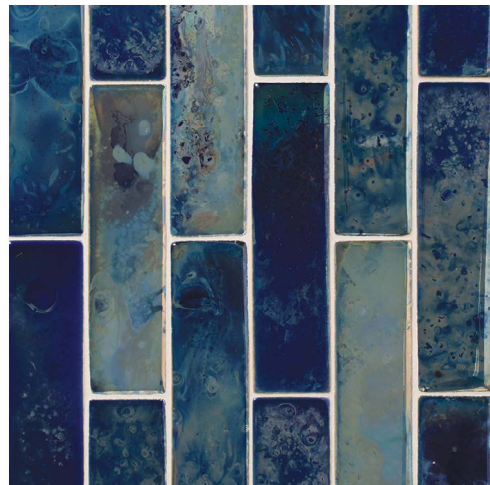
AMAZING GRACE | CRACKLE



VOO DOO | CRACKLE



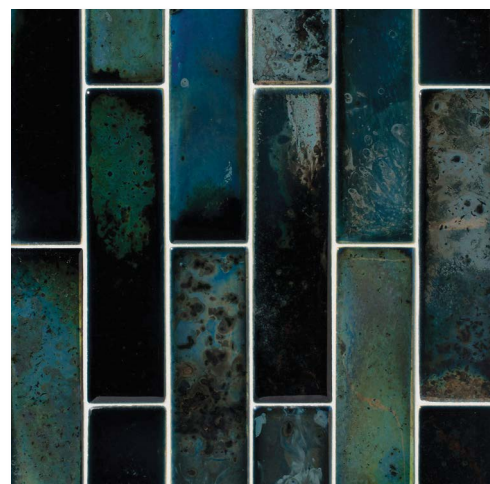
REGGAE DANCING | CRACKLE



THUNDER ROAD | LUSTER



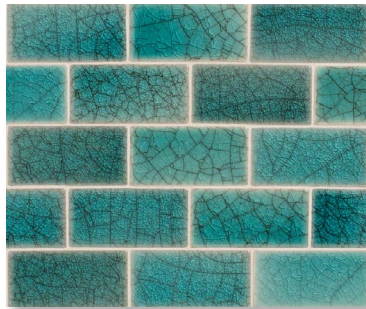
SPANISH EYES | LUSTER



AFTER MIDNIGHT | LUSTER

Euphoria glazes are subject to EXTREME range of color variation where no two pieces are exactly alike. An experienced craftsman should lay out tiles prior to setting to allow for blending of the color range.

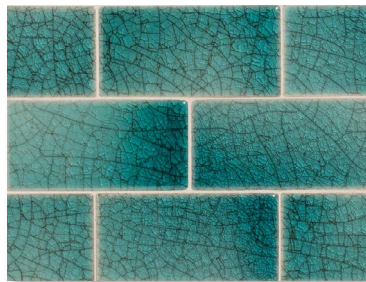
# EUPHORIA



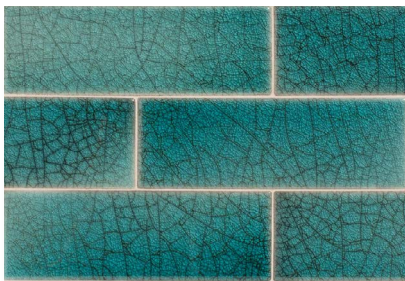
| 2" x 4"



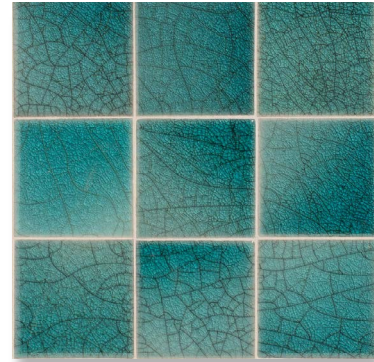
| 2" x 8"



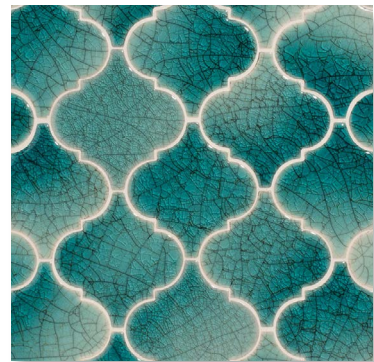
| 3" x 6"



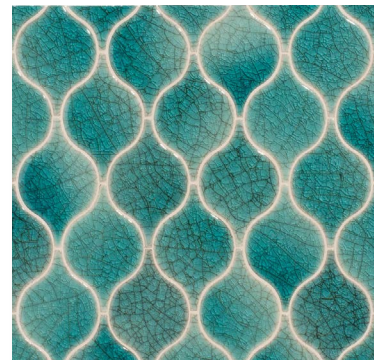
| 3" x 9"



| 4" x 4"



ARABESQUE | 5 1/4" x 5"



VINO | 4 3/4" x 3"

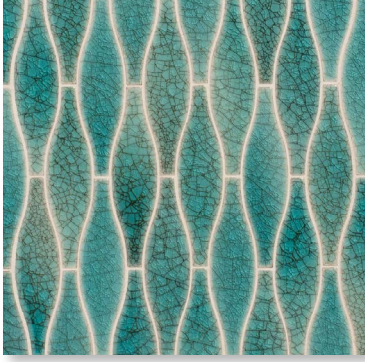


All sizes shown in Amazing Grace. Sizes sold individually.

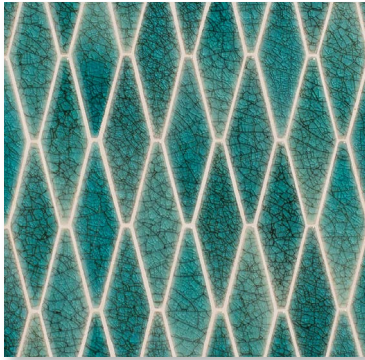
Euphoria glazes are subject to EXTREME range of color variation where no two pieces are exactly alike. An experienced craftsperson should lay out tiles prior to setting to allow for blending of the color range.

ALL SIZES AVAILABLE IN FULL COLOR PALETTE. BULLNOSE AVAILABLE IN SELECT SIZES.

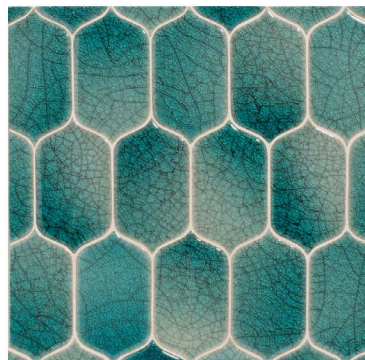
# EUPHORIA



MYSTIC | 6 1/4" x 1 5/8"



eHEX | 5 3/4" x 1 3/4"



FLASK | 5 1/2" x 3"



## SUGGESTED APPLICATIONS

- Residential interior walls
- Standard commercial interiors walls
- Showers
- Pools (except freeze thaw areas)
- Outdoor areas including freeze thaw (except on horizontal surfaces where water can accumulate)

## ASTM RESULTS

Test #C650	Chemical Resistance	May be affected by some common household and cleaning chemicals.
Test #C1026	Freeze Thaw Resistance	Pass (except as noted above)

## HANDCRAFTED CHARACTERISTICS

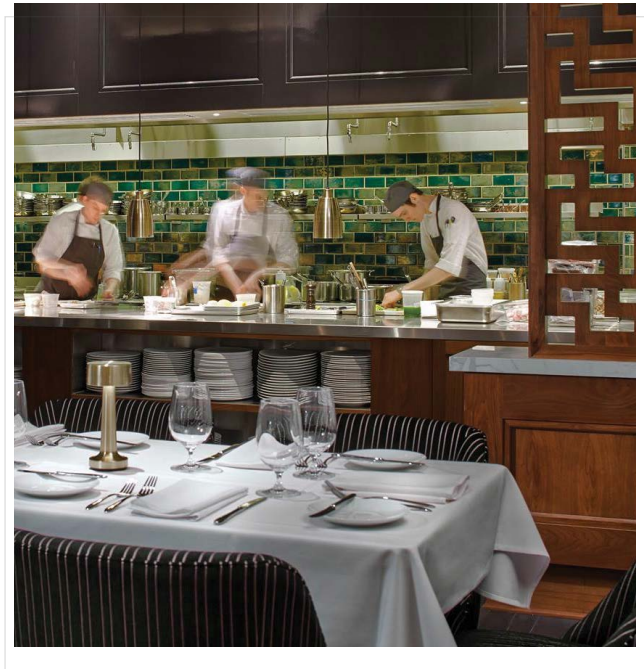
Variation in shade, color, texture and size are inherent characteristics of these handcrafted tiles. Euphoria glaze formulations and kiln firing techniques are an evolution of the traditional Raku process, a type of Japanese pottery. The result is a uniquely beautiful tile where no two pieces are exactly alike. As such, the tiles finally purchased will vary from both the catalog illustrations and samples. Once properly installed, the beauty of this handcrafted tile is enhanced by such variation.

## INSPECTION AND INSTALLATION

Always inspect your tiles before they are installed, as installation of material constitutes acceptance. Any questions as to acceptability must be resolved before installation. We are in no way responsible for the installation of our tiles or thereafter. The responsibility for correct installation rests with the end user.

## KEY USAGE & INSTALLATION NOTES

- The beauty of Euphoria glazes can result in **EXTREME** variation, particularly with the lusters. **AN EXPERIENCED CRAFTSPERSON MUST BLEND AND SET EUPHORIA TILES.**
- The ceramic body for Euphoria did pass freeze-thaw testing for outdoor use. However, we do not recommend using Euphoria on a horizontal surface where water can accumulate.
- All tiles must be laid out prior to setting to allow for blending of the color range. The resulting variation is beautiful, but tiles must be carefully blended prior to installation.
- The high fire process used to produce the lusters sometimes results in a hazy residue. Prior to blending for color, wipe off tiles with a soft, damp cloth. The true color of the tile will be more apparent without residue.
- It is very important to use a glass cutting thin diamond blade to cut Euphoria, not a tile/brick blade.
- Tile should be sealed with a penetrating sealer to accommodate maintenance, both pre and post grouting.
- Use a PH neutral cleaner and avoid any citric or abrasive cleansers.



## CONTACT INFORMATION:

[www.architessa.com](http://www.architessa.com)

1.800.287.1742

For general sales inquiries: [sales@architessa.com](mailto:sales@architessa.com)

For commercial & hospitality sample requests: [samples@architessa.com](mailto:samples@architessa.com)

Headquarters: 1803 Research Blvd. Suite 402 Rockville, MD 20850