

ENIGMA LAVAGNA

Porcelain



ARCHITESSA

an Architectural Ceramics brand



ENIGMA LAVAGNA

 ARCHITESSA
an Architectural Ceramics brand



COLORS



BIANCO

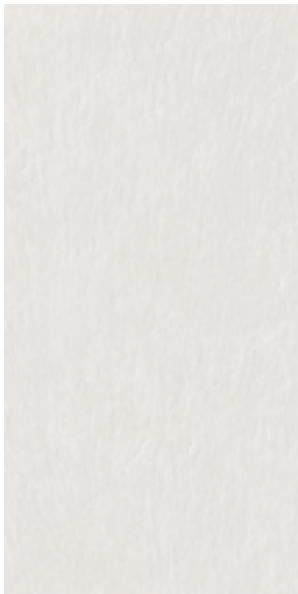


ROVERE

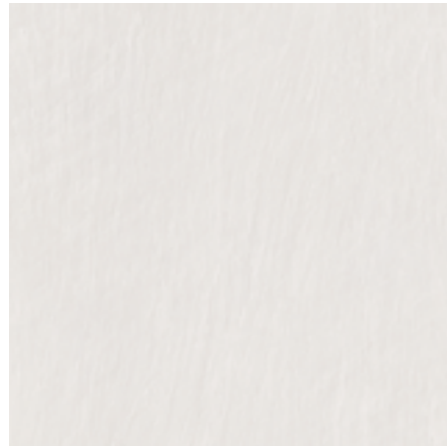


NERO

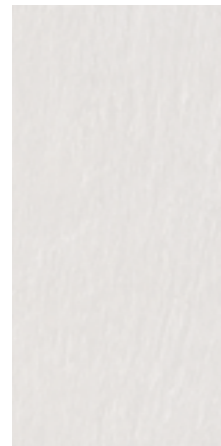
BIANCO



24x48



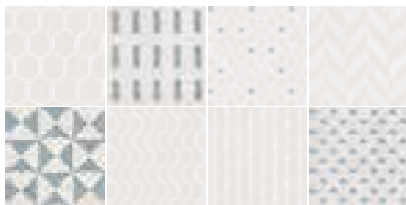
36x36



18x36



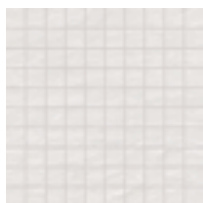
12x24



6x6 Decos



6x24 Decos



1x1 Mosaic

ROVERE



24x48



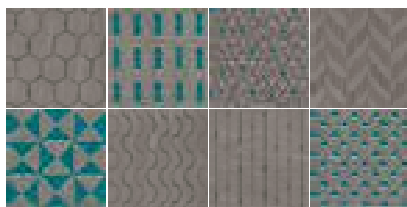
36x36



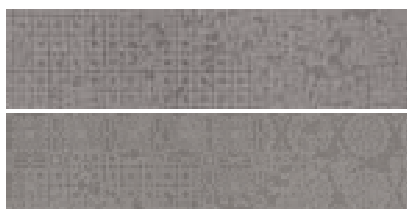
18x36



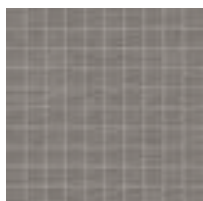
12x24



6x6 Decos



6x24 Decos



1x1 Mosaic

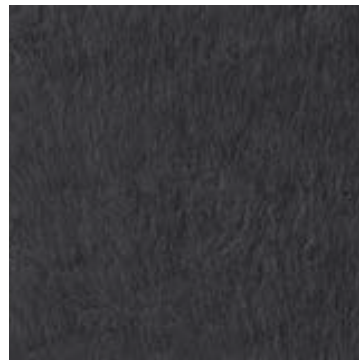
NERO



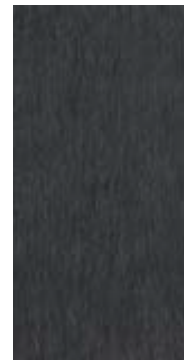
30x60



24x48



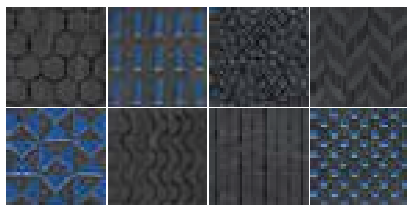
36x36



18x36



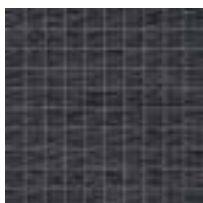
12x24



6x6 Decos



6x24 Decos



1x1 Mosaic

AVAILABLE SIZES	FIELD TILE					2CM	DECO		MOSAIC	TRIM	
	30x60	24x48	36x36	18x36	12x24	32x32 20mm	6x6	6x24	1x1	3x24 BN	2x36 BN
Rovere		N	N	N	N		N	N	N	N	N
Bianco		N	N	N	N	N	N	N	N	N	N
Nero	N	N	N	N	N	N	N	N	N	N	N

N= Natural

Lead times for specialty & non-stocked items varies depending on product ordered, quantity, and destination. Please contact Architessa to determine the lead time to order samples and material.

DESCRIPTION

ENIGMA LAVAGNA is a slate offered in deep black (Nero) color typical of when the sedimentary rock is extracted, and in two trendy colors; grigio and avorio. Slate, in all its sizes, reveals its nature as a ductile stone ideal for wall tiles in spaces with great architectural character.

INSTALLATION & MAINTENANCE

ENIGMA LAVAGNA may be installed using standard porcelain tile installation methods and materials, as recommended by the Tile Council of North America (TCNA). An Architessa sales representative will advise you on general installation questions.

TECHNICAL INFORMATION

TYPE: PORCELAIN
 ORIGIN: ITALY
 EDGE: RECTIFIED
 THICKNESS: 10MM
 LOOK: SLATE
 SHADE VARIATION: V3 - MODERATE VARIATION
 SURFACE ABRASION: N/A
 TRAFFIC RATING: HEAVY COMMERCIAL

DCOF: ≥ 0.42
 BREAKING STRENGTH: COMPLIANT TO ASTM C-648 > 250LBS
 WATER ABSORPTION: <0.5%
 STAIN RESISTANCE: YES
 FROST RESISTANCE: YES
 ENVIRONMENT: 7.5% PRE-CONSUMER RECYCLED CONTENT

CONTACT INFORMATION:

www.architessa.com

1.800.287.1742

For general sales inquiries: sales@architessa.com

For commercial & hospitality sample requests: samples@architessa.com

Headquarters: 1803 Research Blvd. Suite 402 Rockville, MD 20850