

CRASH

Porcelain

 ARCHITESSA
an Architectural Ceramics brand



WHITE



24x24 White



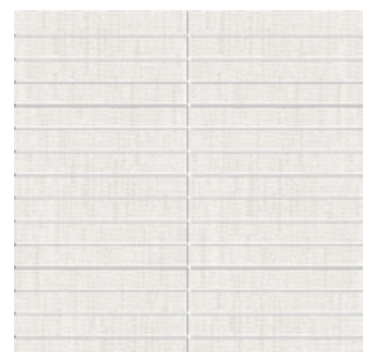
12x24 White



6x24 White



4x24 White



1x6 White Mosaic

ECRU



24x24 Ecrú



12x24 Ecrú



6x24 Ecrú

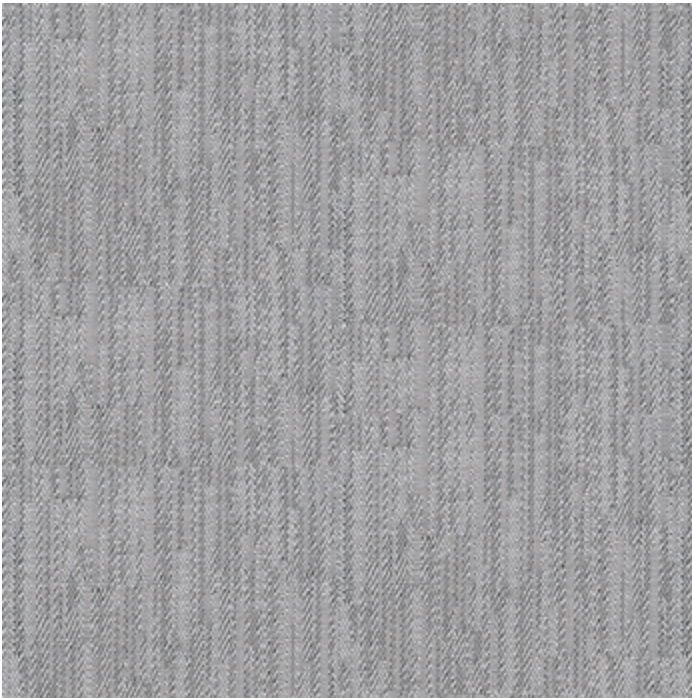


4x24 Ecrú



1x6 Ecrú Mosaic

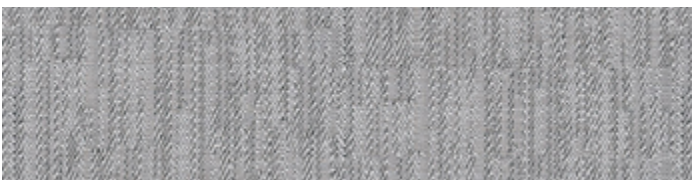
GREY



24x24 Grey



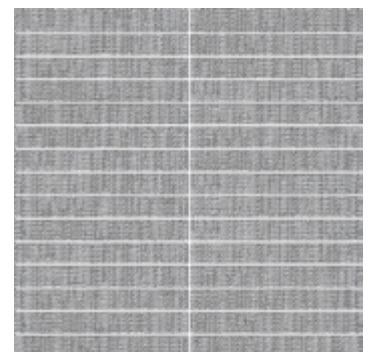
12x24 Grey



6x24 Grey

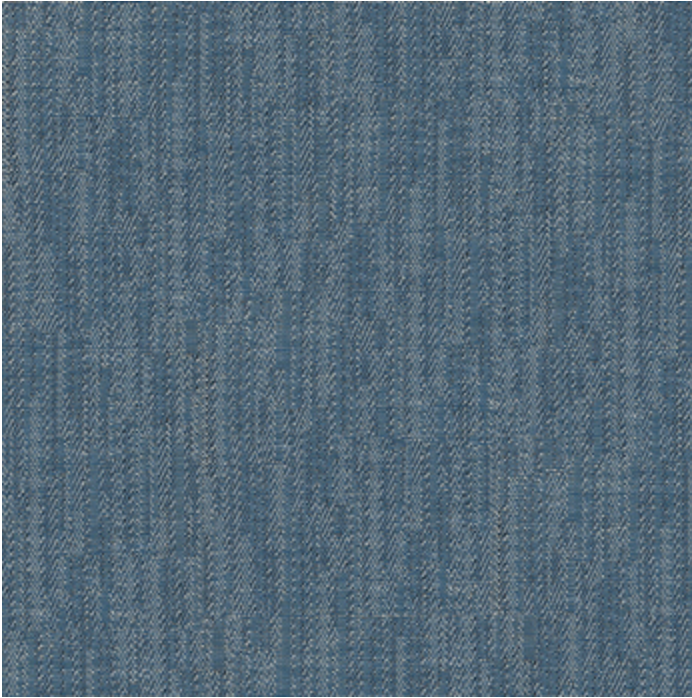


4x24 Grey



1x6 Grey Mosaic

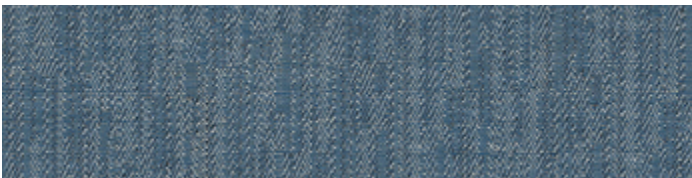
DENIM



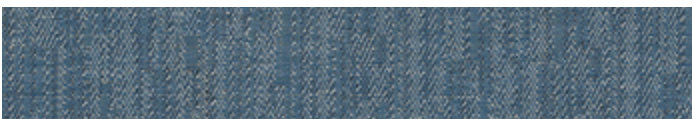
24x24 Denim



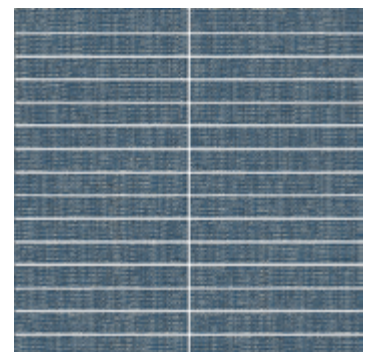
12x24 Denim



6x24 Denim



4x24 Denim



1x6 Denim Mosaic

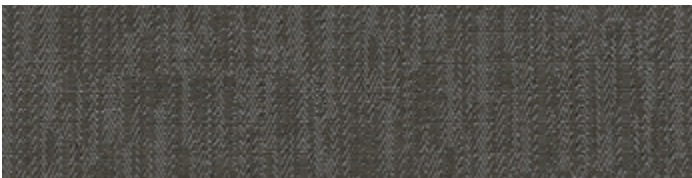
NIGHT



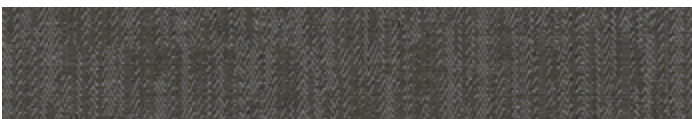
24x24 Night



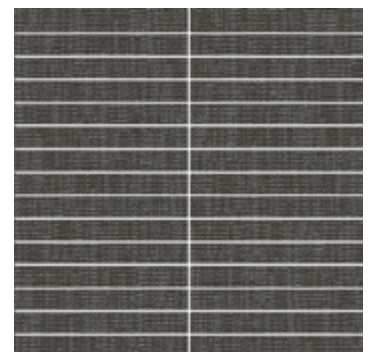
12x24 Night



6x24 Night



4x24 Night



11x6 Night Mosaic

MIX



24x24 Mix



1x6 Mix Mosaic





CRASH

 ARCHITESSA
an Architectural Ceramics brand





CRASH

 ARCHITESSA
an Architectural Ceramics brand





CRASH

ARCHITESSA
an Architectural Ceramics brand













CRASH

 ARCHITESSA
an Architectural Ceramics brand



CRASH







AVAILABLE SIZES

	FIELD				MOSAIC
	24x24	12x24	6x24	4x24	1x6 Stacked
White	M	M	M	M	M
Ecru	M	M	M	M	M
Grey	M	M	M	M	M
Denim	M	M	M	M	M
Night	M	M	M	M	M
Mix	M				M

M= Matte

Lead times & product availability subject to change. Please contact an Architessa rep for lead times, samples, and availability.

DESCRIPTION

CRASH is a fashion-forward porcelain tile featuring a fabric-look pattern. Being porcelain, its non-porous surface makes it easy to clean and maintain, unlike real carpet. This fabric-look tile is a great way to introduce texture into a space without introducing the added care needed to upkeep carpet.

INSTALLATION & MAINTENANCE

CRASH may be installed using porcelain installation methods and materials, as recommended by the Tile Council of North America (TCNA). An Architectural Ceramics sales representative will advise you on general installation questions.

TECHNICAL INFORMATION

TYPE: COLOR BODY PORCELAIN
 ORIGIN: ITALY
 EDGE: RECTIFIED
 THICKNESS: 3/8"
 LOOK: FABRIC
 SHADE VARIATION: 2 - SLIGHT VARIATION
 SURFACE ABRASION: N/A
 TRAFFIC RATING: RESIDENTIAL, COMMERCIAL

DCOF: $\geq .42$
 BREAKING STRENGTH: > 250 LBS
 WATER ABSORPTION: <.01%
 STAIN RESISTANCE: YES
 FROST RESISTANCE: YES
 ENVIRONMENT: 20% PRE-CONSUMER RECYCLED CONTENT

CONTACT INFORMATION:

www.architessa.com

1.800.287.1742

For general sales inquiries: sales@architessa.com

For commercial & hospitality sample requests: samples@architessa.com

Headquarters: 1803 Research Blvd. Suite 402 Rockville, MD 20850