

BRYANT PARK

Ceramic



ARCHITESSA

an Architectural Ceramics brand



BODY SPA



BRYANT PARK White Silver Face 1

COLORS



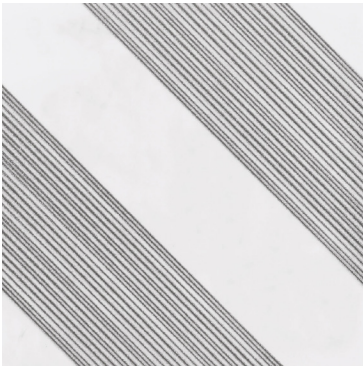
White Gold Face 1



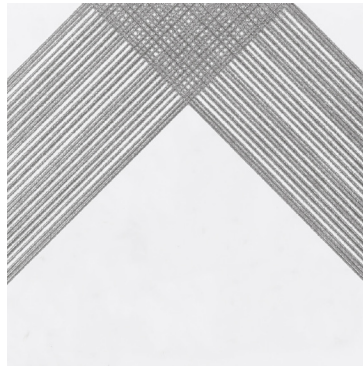
White Gold Face 2



White Gold Face 3



White Silver Face 1



White Silver Face 2



White Silver Face 3



Black Gold Face 1



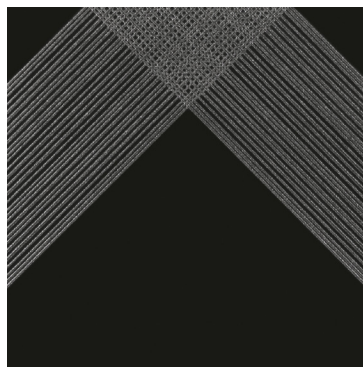
Black Gold Face 2



Black Gold Face 3



Black Silver Face 1



Black Silver Face 2



Black Silver Face 3

AVAILABLE SIZES

	WALL
	12x12
Black Gold Face 1	M
Black Gold Face 2	M
Black Gold Face 3	M
Black Silver Face 1	M
Black Silver Face 2	M
Black Silver Face 3	M
White Gold Face 1	M
White Gold Face 2	M
White Gold Face 3	M
White Silver Face 1	M
White Silver Face 2	M
White Silver Face 3	M

M= Matte

Lead times for specialty & non-stocked items varies depending on product ordered, quantity, and destination. Please contact Architessa to determine the lead time to order samples and material.

DESCRIPTION

BRYANT PARK is a collection of decorative wall tiles with clean lines and contemporary flair. White and black surfaces with either gold or silver marks create delightful patterns depending on desired designs.

INSTALLATION & MAINTENANCE

BRYANT PARK may be installed using standard porcelain installation methods and materials, as recommended by the Tile Council of North America (TCNA). An Architessa sales representative will advise you on general installation questions.

TECHNICAL INFORMATION

ORIGIN: BRAZIL

AVAILABLE FINISHES: MATTE

TYPE: CERAMIC

EDGE: RECTIFIED

LOOK: METALLIC; PATTERN

APPLICATION: WALL

USE: INDOOR COMMERCIAL & RESIDENTIAL

PACKAGING: PLEASE CONSULT YOUR SALES REP

COLOR VARIATION: V1 - UNIFORM

THICKNESS: 9.3 MM

PEI SCALE: N/A

DCOF: N/A

BREAKING STRENGTH: 125 LBF

WATER ABSORPTION: 7% - 20%

STAIN RESISTANCE: CLASS B

FROST RESISTANCE: NO

ENVIRONMENT: 14% PRE-CONSUMPTION

RECYCLED CONTENT

CONTACT INFORMATION:

www.architessa.com

1.800.287.1742

For general sales inquiries: sales@architessa.com

For commercial & hospitality sample requests: samples@architessa.com

Headquarters: 1803 Research Blvd. Suite 402 Rockville, MD 20850