

ATLAS

Porcelain

 ARCHITESSA
an Architectural Ceramics brand



COLORS



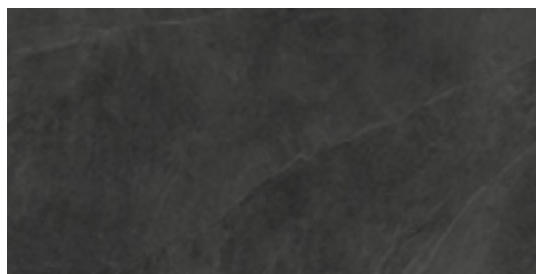
Granite Stone



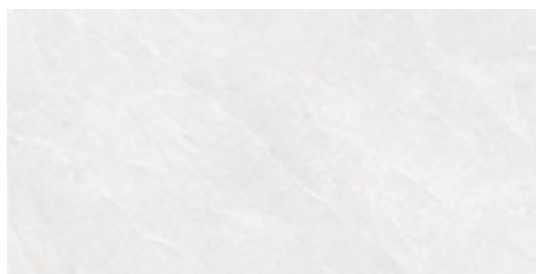
Slate Multicolor



Slate Grey



Slate Black



Slate White

GRANITE STONE



24x48



18x36



24x24 - 20mm



12x48



12x24

MOSAICS



12x48 Parallelo Mosaic



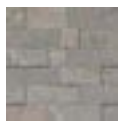
12x24 Modulo Mosaic



12x24 Listelli



1x1 Mosaic



12x12 3D Mosaic

SLATE MULTICOLOR



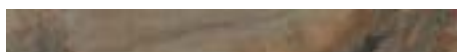
24x48



18x36



24x24 - 20mm



6x48



12x24

MOSAICS



12x48 Parallelo Mosaic



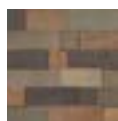
12x24 Modulo Mosaic



12x24 Listelli



1x1 Mosaic



12x12 3D Mosaic

SLATE GREY



24x48



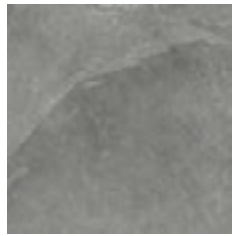
18x36



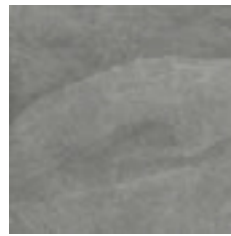
12x24



12x48



24x24



24x24 - 20mm

MOSAICS



12x48 Parallelo Mosaic



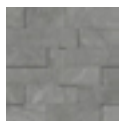
12x24 Modulo Mosaic



12x24 Listelli

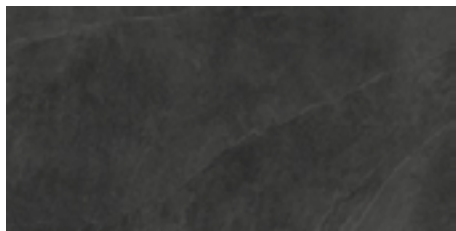


1x1 Mosaic



12x12 3D Mosaic

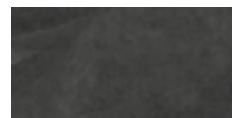
SLATE BLACK



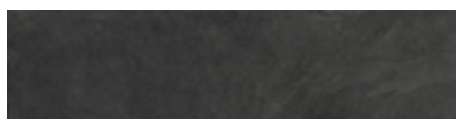
24x48



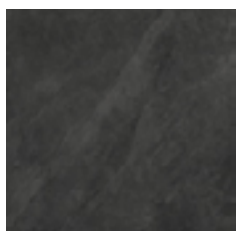
18x36



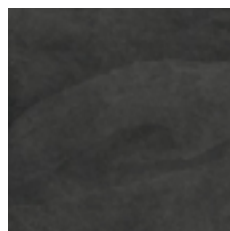
12x24



12x48

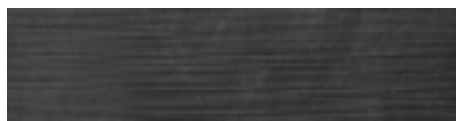


24x24 - 20mm



24x24

MOSAICS



12x48 Parallelo Mosaic



12x24 Modulo Mosaic



12x24 Listelli



1x1 Mosaic

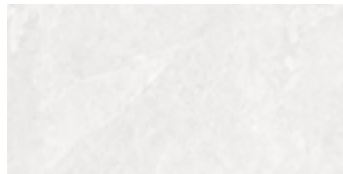


12x12 3D Mosaic

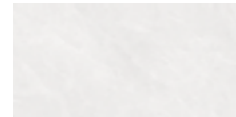
SLATE WHITE



24x48



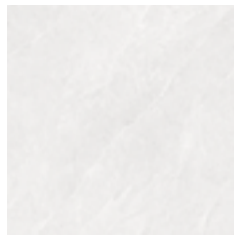
18x36



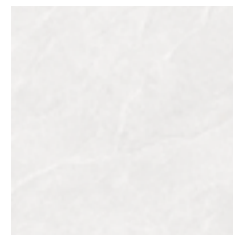
12x24



12x48



24x24



24x24 - 20mm

MOSAICS



12x24 Listelli



1x1 Mosaic













































AVAILABLE SIZES

	FIELD										MOSAICS				DECO
	24x48	18x36	12x48	6x48	24x24	24x24 20 mm	12x24	4x12	35x35	48x109	1x1	12x12 3D	12x24 Listelli	12x24 Modulo	12x24 Paralello
Granite Stone	N	N	N			N	N				N	N	N	N	N
Slate Multicolor	N	N		N		N	N				N	N	N	N	N
Slate Grey	N	N	N		N	N	N	N	N	N	N	N	N	N	N
Slate Black	N	N	N		N	N	N	N	N	N	N	N	N	N	N
Slate White	N	N	N		N		N	N	N	N	N		N		

AVAILABLE TRIM

	TRIM			
	6x12 CB	1x6 CB In/Out	3x24 BN	3x36 BN
Granite Stone	N	N	N	N
Slate Multicolor	N	N	N	N
Slate Grey	N	N	N	N
Slate Black	N	N	N	N
Slate White	N	N	N	N

N=Natural Finish

Lead times & product availability subject to change. Please contact an Architessa rep for lead times, samples, and availability.

DESCRIPTION

ATLAS offers its own unique interpretation of the slates of the world based on a fresh vision and new reproduction technologies.

INSTALLATION & MAINTENANCE

ATLAS may be installed using standard ceramic tile installation methods and materials, as recommended by the Tile Council of North America (TCNA). An Architessa sales representative will advise you on general installation questions. The manufacturer of this product recommends a 2mm grout joint.

TECHNICAL INFORMATION

ORIGIN: ITALY

TYPE: PORCELAIN

EDGE: RECTIFIED (SELECT 20 MM COLORS

AVAILABLE SPECIAL ORDER IN NON-RECTIFIED)

VARIATION: V3 - MODERATE VARIATION THICKNESS:

6.5MM(47X109), 10 MM (20MM AVAILABLE IN 24X

LOOK: SLATE

USE: COMMERCIAL & RESIDENTIAL

DCOF: $\geq .42$

BREAKING STRENGTH: >250 LBS

WATER ABSORPTION: < 0.5%

STAIN RESISTANCE: YES

FROST RESISTANCE: YES

CONTACT INFORMATION:

www.architessa.com

1.800.287.1742

For general sales inquiries: sales@architessa.com

For commercial & hospitality sample requests: samples@architessa.com

Headquarters: 1803 Research Blvd. Suite 402 Rockville, MD 20850