

# ADMIRE

Porcelain

 ARCHITESSA  
an Architectural Ceramics brand





# ADMIRE

 ARCHITESSA  
an Architectural Ceramics brand

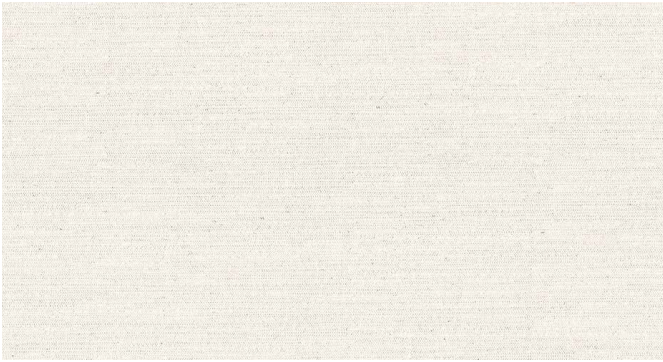


ADMIRE Ivory 12x24

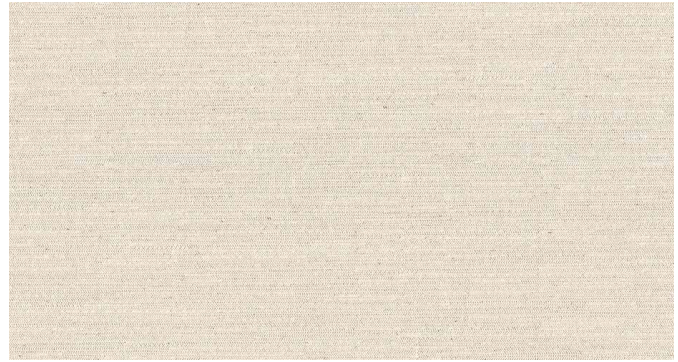


## COLORS

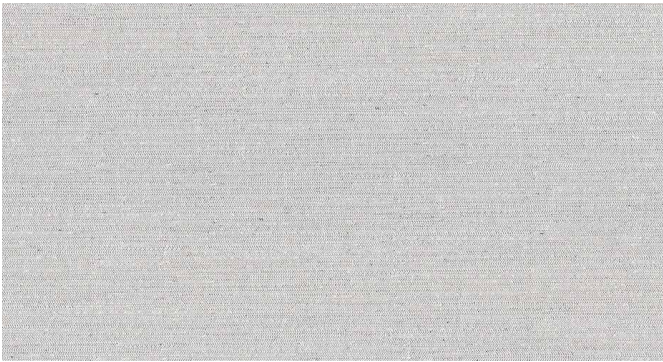
---



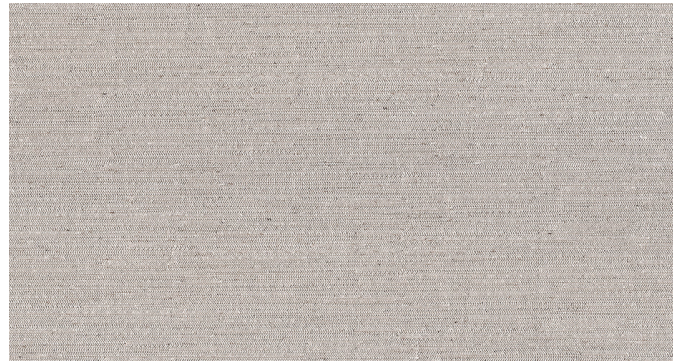
Ivory



Beige



Silver



Charcoal

## AVAILABLE SIZES

	FIELD		MOSAIC	TRIM
	12x24	3x12	2x2	3x24 BN
Beige	M	M <sup>+</sup>	M	M
Charcoal	M	M <sup>+</sup>	M	M
Ivory	M	M <sup>+</sup>	M	M
Silver	M	M <sup>+</sup>	M	M

M= Matte, +Discontinued

Lead times for specialty & non-stocked items varies depending on product ordered, quantity, and destination. Please contact Architessa to determine the lead time to order samples and material.

## DESCRIPTION

ADMIRE is a fabric design on a porcelain tile body, faithfully made in the USA. In the years since that product launch, fabric has only grown more popular as a leading trend in design. Commercially rated for all floor and wall uses, ADMIRE features a linen fabric pattern, inspired by

## INSTALLATION & MAINTENANCE

ADMIRE may be installed using standard porcelain installation methods and materials, as recommended by the Tile Council of North America (TCNA). An Architessa sales representative will advise you on general installation questions.

## TECHNICAL INFORMATION

TYPE: GLAZED PORCELAIN

ORIGIN: USA

EDGE: RECTIFIED

THICKNESS: 8 MM

LOOK: FABRIC

SHADE VARIATION: V1 - UNIFORM

SURFACE ABRASION: 4

TRAFFIC RATING: COMMERCIAL

DCOF: 0.58

BREAKING STRENGTH: 587 LBS

WATER ABSORPTION: 0.10%

STAIN RESISTANCE: CLASS A

FROST RESISTANCE: YES

ENVIRONMENT: >40% RECYCLED CONTENT,

GREEN SQUARED CERTIFIED

## CONTACT INFORMATION:

[www.architessa.com](http://www.architessa.com)

1.800.287.1742

For general sales inquiries: [sales@architessa.com](mailto:sales@architessa.com)

For commercial & hospitality sample requests: [samples@architessa.com](mailto:samples@architessa.com)

Headquarters: 1803 Research Blvd. Suite 402 Rockville, MD 20850

