

ABODE

Porcelain

 ARCHITESSA
an Architectural Ceramics brand





ABODE Ash 24x48



ABODE Beige 24x48

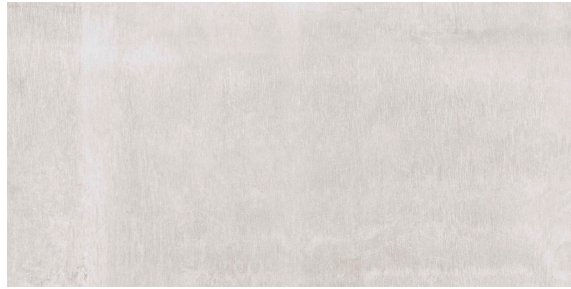


ABODE Black 12x24, 2x2



ABODE Brown 12x24

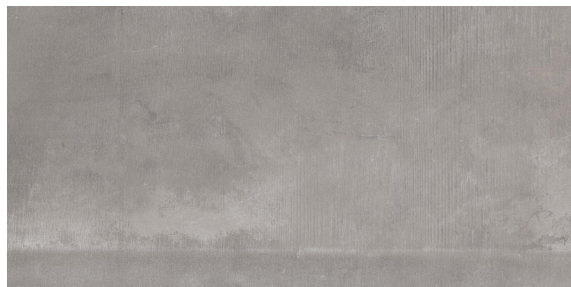
FIELD



Beige



Brown



Ash



Black

AVAILABLE SIZES

	FIELD		MOSAIC	TRIM	
	24x48	12x24	2x2 Square	4x24 BN	6x12 CB
Ash	H, R11	H*	H*	H	H
Beige	H, R11	H*	H*	H	H
Black	H, R11	H*	H*	H	H
Brown	H, R11	H*	H*	H	H

H= Honed, R11= Grip R11 | *Stock Size

Lead times & product availability subject to change. Please contact an Architessa rep for lead times, samples, and availability.

DESCRIPTION

ABODE adds a sophisticated flair to concrete look porcelain tiles. Available in four neutral colors and with a textured R11 finish, ABODE porcelain tile is easy to add to indoor and outdoor tile projects alike.

INSTALLATION & MAINTENANCE

ABODE may be installed using standard porcelain tile installation methods and materials, as recommended by the Tile Council of North America (TCNA). An Architessa sales representative will advise you on general installation questions.

TECHNICAL INFORMATION

TYPE: COLOR BODY PORCELAIN
 ORIGIN: USA
 EDGE: RECTIFIED
 THICKNESS: 8MM
 LOOK: CONCRETE, INDUSTRIAL
 SHADE VARIATION: V3 - MODERATE VARIATION
 SURFACE ABRASION: 4
 TRAFFIC RATING: HEAVY COMMERCIAL

DCOF: ≥ 0.42
 BREAKING STRENGTH: $\geq 400\text{LBF}$
 WATER ABSORPTION: $\leq 0.1\%$
 STAIN RESISTANCE: YES, CLASS A
 FROST RESISTANCE: YES
 ENVIRONMENT: EPD, HPD, GREENGUARD CERTIFIED,
 GREEN SQUARED CERTIFIED

CONTACT INFORMATION:

www.architessa.com

1.800.287.1742

For general sales inquiries: sales@architessa.com

For commercial & hospitality sample requests: samples@architessa.com

Headquarters: 1803 Research Blvd. Suite 402 Rockville, MD 20850

