

# ACOUSTICAL ACCENTS – TEAR DROP PANEL

## Installation Instructions

### 1. GENERAL

#### 1.1 Kit Includes

- (4) Right Tear Drop Panels (*Fig 1*)
- (4) Left Tear Drop Panels (*Fig 1*)
- 100 ft. of Permanent Tape
- Template

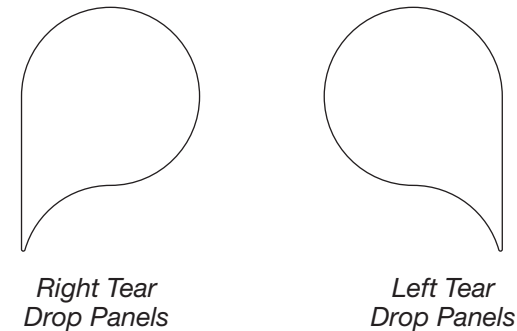
#### 1.2 Safety Tips

- Safety glasses and gloves are recommended to be worn during installation.
- Ensure the work area is clear of obstructions and that the desired panel locations are easily accessible.
- If using a step ladder, be sure to follow all of the manufacturer's recommendations.

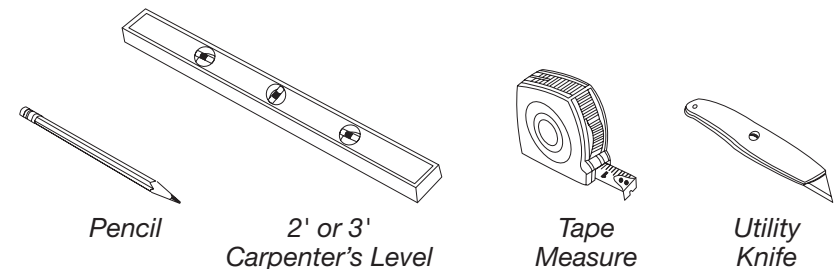
#### 1.3 Important Information

- Store and install panels in areas with temperature and humidity ranges that meet specific product warranty requirements.
- The permanent tape adhesion strength may differ slightly based on the quality of the wall surface. The surface should be smooth, flat, dry, clean and free of dust and contamination of oil and grease. Make sure the tape is adhered well to the wall before proceeding with the installation.
- Paint should have good adhesion to the wall without defects, such as peeling, cracking, or bubbling.
- For newly painted walls, wait for the paint to be fully dried prior to installation.

#### 1.4 Tools Needed to Install Your Wall Panels (*Fig 2*)



(*Fig 1*)



(*Fig 2*)

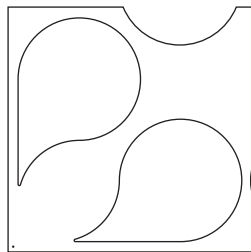
## 2. INSTALLATION STEPS

### Step 1 – Determine Your Layout

Plan the layout of your panels, measuring the available area and panel sizes before you begin. Each Tear Drop panel is 12" x 15-1/2" (nominal). Use the provided template as a spacing guide, and see the following patterns for inspiration (*Figs 3, 4, 5, and 6*).

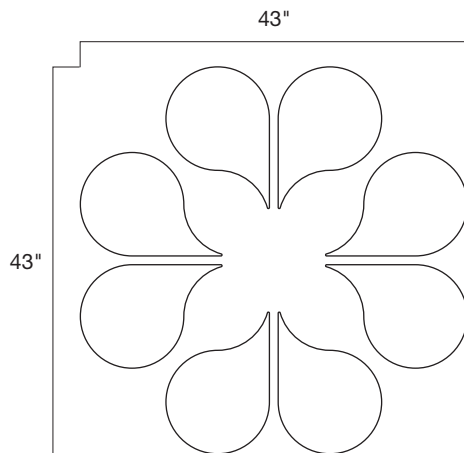
If installing the panels without the template, leave a 1/4" gap in between each panel edge. Always start with the lowest row.

### Pattern Option for Tear Drop Panels



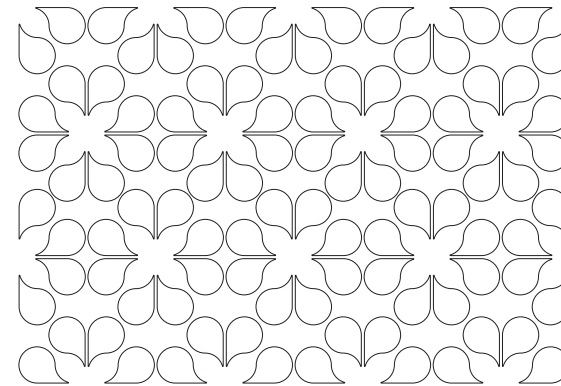
(Fig 3)

Template



(Fig 4)

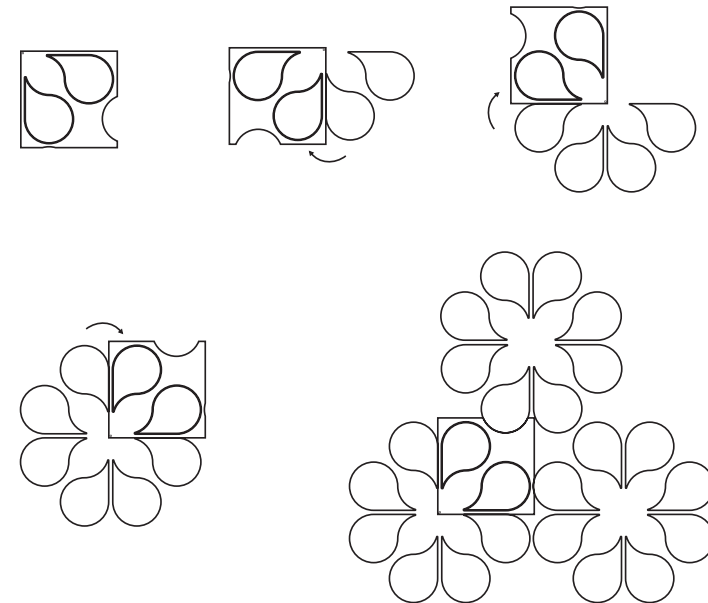
Example of One Complete Flower Pattern



(Fig 5)

Multiple Flowers Pattern

### How To Install the Pattern



(Fig 6)

## Step 2 – Prepare Wall Surface

Thoroughly clean your wall with a clean rag to remove dust and debris. Further cleaning with suitable agent(s) may be necessary in order to create a smooth, flat, clean surface. Allow the area to fully dry.

## Step 3 – Attach Tape to Wall

- Hang the template with painters tape on the wall in the location needed for the first two panels. Use a level to ensure the template is horizontal.

**NOTE:** Mark the center point of the template with a pencil in the circle cut-out in the lower left hand corner of the template. This will be important when lining up your template in subsequent steps.

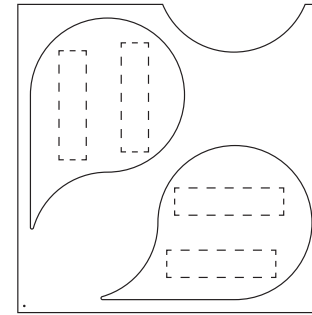
- Cut two 8" strips of the permanent tape with scissors or a utility knife. Apply tape to the wall inside of the template in the locations shown in *(Fig 7)*. Tape should be placed 1" away from the panel edges, and a few inches apart from each other.
- Laminate the tape to the wall surface using a roller, a putty knife, or a piece of rigid block and squeegee/wipe the tape with sufficient pressure to ensure good and uniform adhesive bond strength.
- **WARNING:** Tape is considered permanent and non-removable. The panel will most likely be damaged if it needs to be removed from the tape after installation.

## Step 4 – Install Wall Panel

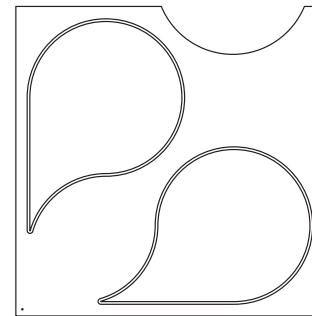
**NOTE:** Wear clean gloves while handling the panels to avoid transferring dirt to the surface.

- Install the Tear Drop panels by positioning them within the template locations and firmly press where the tape strips are located, making sure not to press too hard that would damage the face of the panel *(Fig 8)*.
- **NOTE:** there should be about 1/16" of space around the Tear Drop panel once it is placed within the template. This is so the template can be removed after the two panels are installed.
- Once the two panels are installed, carefully remove the template from the wall *(Fig 9)*. Place the template in the next location, using the previously marked pencil center-mark to ensure proper alignment. Repeat steps 3 and 4 until the pattern is complete.
- If installing the panels without the template, leave a 1/4" gap in between each panel edge. Always start with the lowest row.

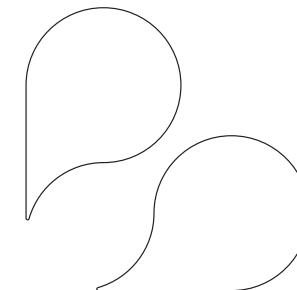
## Tape Locations



*(Fig 7)*



*(Fig 8)*



*(Fig 9)*

## Step 5 – Completing the Installation

- Evaluate the installed panels to check for alignment and overall visual.
- Cleaning and maintenance: dust off with a clean rag or use a damp cloth.

## 3. LIMITED WARRANTY

Failure to follow the Armstrong Ceilings recommended installation instructions in effect at the time of installation may void the product and/or system warranty.

## 4. PRECAUTIONARY MEASURES

During the installation, be certain that the work site is well ventilated and avoid breathing dust. Avoid contact with skin or eyes. Wear long sleeve, loose fitting clothes, gloves, and eye protection. Cut and trim with knife, razor, or hand saw. Do not cut with power equipment unless the equipment has an attached dust collector. The work site air quality should be assessed and if conditions require, a NIOSH approved respirator should be worn.

This product may contain small levels of crystalline silica. Exposures to respirable crystalline silica are not anticipated based on industrial hygiene testing on workers installing acoustical ceiling panels for an 8-hour work day and are not expected during normal use of this product. Specific work-site conditions must be taken into consideration to determine if workplace industrial hygiene testing is necessary.

Prolonged and repeated exposure to airborne crystalline silica can result in lung disease and/or lung cancer. Panels do not release respirable dust in their installed state. For additional information, refer to the Safety Data Sheet at [armstrongceilings.com](http://armstrongceilings.com)

## 5. FIRST AID MEASURES

If eye or skin contact occurs, flush with plenty of water for at least 15 minutes and remove contaminated clothing. After installing material, wash with warm water and mild soap. Wash work clothes separately from other clothing. Rinse washer thoroughly.

## MORE INFORMATION

For more information, or for an Armstrong Ceilings representative, call 1 877 276-7876.

For complete technical information, detail drawings, CAD design assistance, installation information, and many other technical services, call TechLine customer support at 1 877 276-7876 or FAX 1 800 572-TECH.

All trademarks used herein are the property of AWI Licensing LLC and/or its affiliates.  
© 2021 AWI Licensing Company Printed in the United States of America

BPLA-293048-721

