



**MALASANA**

TRAINING



# ABOUT THE COLLECTION

Malasana, the hip alternative community in the heart of Madrid, Spain, inspires innovation in this collection. A collection where you see a crazy love of color , soft sensuous Spanish lamb and intricate braiding that is at heart just “Pure Fun”.

The Pure Fun of Malasana cuts across categories, from an avant garde style for business to wacky yet comfortable weekend casual bags.

# MATERIALS USED

- **LAMB** leather in aqua blue, berry red, pink, green, black, beige
- **Melbourne Ranch** leather in tan



**Lamb**  
Pink



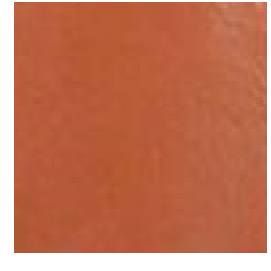
**Lamb**  
Aqua Blue



**Lamb**  
Berry Red



**Lamb**  
Green



**Melbourne Ranch**  
Tan

# HOW TO TALK TO CUSTOMERS

- Malasana is a young, fashionable community in Spain. This collection is inspired by the fun loving place.
- Our new collection Malasana is inspired by Spanish fashion. Looked dressed up without looking boring and formal.
- The Malasana collection is made entirely from imported Spanish lamb leather. Lamb leather is one of our expensive leathers - it has a small fine grain, but is smooth and very soft.
- The Malasana collection is for those who do not want heavy, stiff bags. These are all made from lamb so they are soft with nice folds and shapes.
- Introducing new bright colours to this collection - pink, aqua, green and berry red. Get ready for summer holidays.
- Lots of hand craftsmanship - Twisted handles, braided leather straps,, woven leathers, knotted handles and zip pullers.

# BOMBA 01

Casual bag everyday bag that will surely make a statement. It has large braided puffy handle with a detachable shoulder strap.

Many compartments for ease of use.

FOR	PURPOSE	TYPE	MATERIAL
Women	Casual	Shoulder bag, Grab-handle bag	Lamb



# BOMBA 02

Chic party bag with 3 spacious compartments and detachable strap.

FOR	PURPOSE	TYPE	MATERIAL
Women	Party	Sling bag	Lamb



# BOMBA 03

Large shoulder bag with braided grab handle and woven detail on top edge, comes with a detachable strap.

Perfect for a day out.

FOR	PURPOSE	TYPE	MATERIAL
Women	Casual	Shoulder bag	Lamb





# CHIQUITA 01

Smart utility bag with three compartments and an adjustable strap.

FOR	PURPOSE	TYPE	MATERIAL
Women	Casual	Shoulder bag	Lamb, Melbourne Ranch



# CHIQUITA 02

A top zipper utility bag with multiple pockets and an adjustable strap.

FOR	PURPOSE	TYPE	MATERIAL
Women	Casual	Cross Body	Lamb, Melbourne Ranch



# CHIQUITA 03

Soft lamb backpack that's cute for everyday or travel.

FOR	PURPOSE	TYPE	MATERIAL
Women	Casual	Backpack	Lamb, Melbourne Ranch



# CHIQUITA 04

Soft work bag that can stand out.  
Excellent for every day work.

FOR	PURPOSE	TYPE	MATERIAL
Women	Casual	Shoulder	Lamb, Melbourne Ranch



# LOLA 01

Beautiful sling bag available in bright colours.  
Hand woven leather and brass sling with padded  
strap on the shoulders.

FOR	PURPOSE	TYPE	MATERIAL
Women	Party	Sling Bag	Lamb



# LOLA 02

Beautiful sling bag with brass fitting, available in bright colours. Hand woven leather and brass sling with padded strap on the shoulders.

FOR	PURPOSE	TYPE	MATERIAL
Women	Party	Sling Bag	Lamb



# LOLA 03

Beautiful structured bag in soft lamb leather.  
Hand woven details, multiple compartments.  
Statement piece.

FOR	PURPOSE	TYPE	MATERIAL
Women	Casual	Shoulder Bag	Lamb



# LOLA 04

Cute small sling bag for essentials like phone and purse. A slouchy shape that will match with most of your outfits.

FOR	PURPOSE	TYPE	MATERIAL
Women	Casual	Sling Bag	Lamb





# OONA 01

Excellent party bag in soft spanish lamb and hand braided shoulder strap.

FOR	PURPOSE	TYPE	MATERIAL
Women	Casual	Shoulder Bag	Lamb, Melbourne Ranch



# OONA 02

Large shoulder bag with intricate leather woven body and hand braided shoulder strap

FOR	PURPOSE	TYPE	MATERIAL
Women	Casual	Shoulder Bag	Printed Lamb



# WALLETS

OONA W1

FOR	TYPE	MATERIAL
Women	Wallet	Lamb



# OONA W2

FOR	TYPE	MATERIAL
Women	Wallet	Lamb



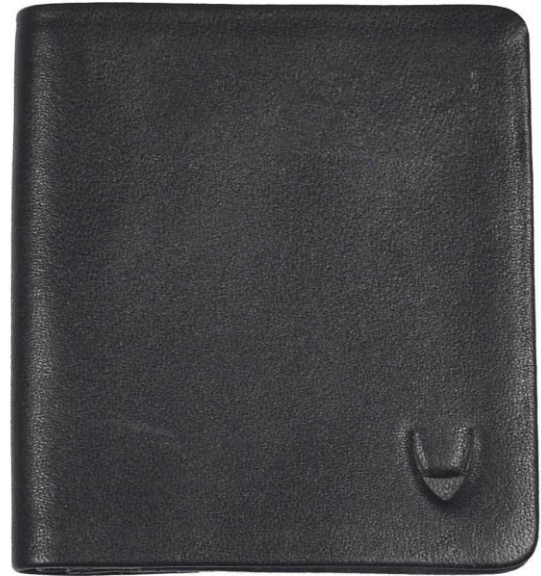
# OONA W3

FOR	TYPE	MATERIAL
Women	Wallet	Lamb



# OONA W4

FOR	TYPE	MATERIAL
Women	Bi-Fold Wallet	Lamb



# OONA W5

FOR	TYPE	MATERIAL
Women	Bi-Fold Wallet	Lamb



THE END