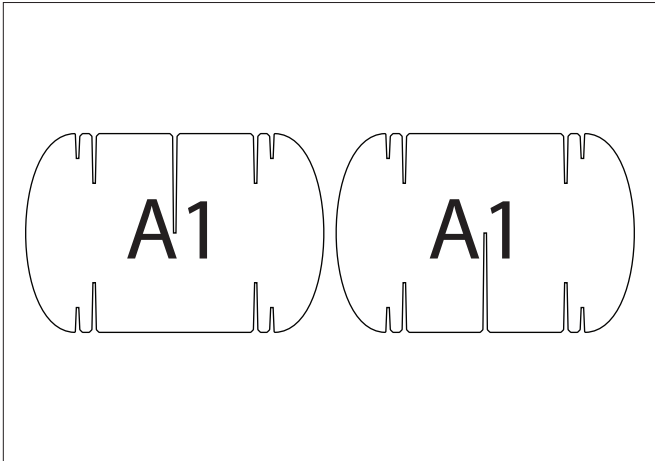


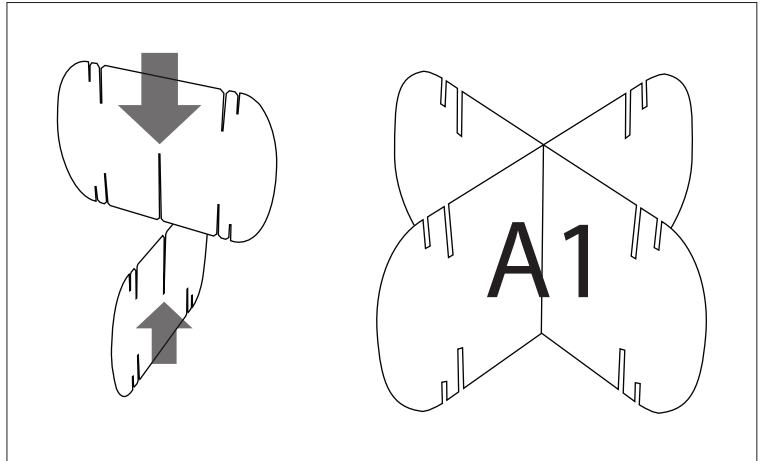
Custom Nomad System Assembly Instructions

IMPORTANT: Follow instructions carefully. Save instructions for future reference.

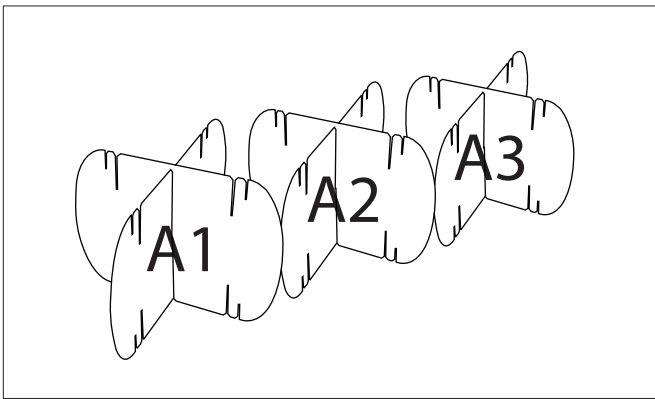
Printable instructions available online at: http://mioculture.com/media/instructions/cns/custom_nomad.pdf



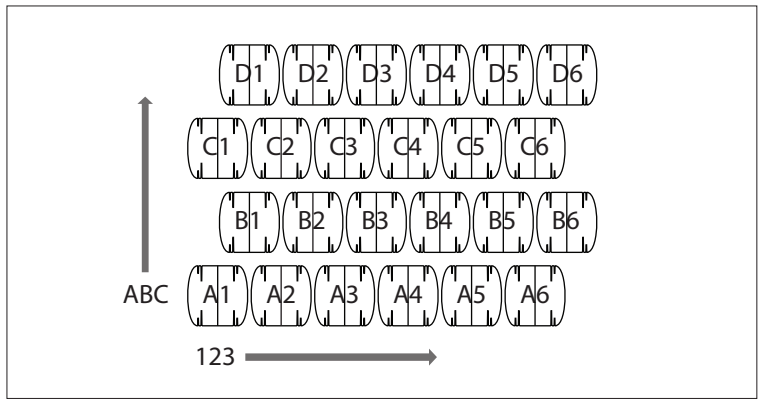
STEP 1 Unpack the Nomad System and sort the modules into number and letter pairs. Each pair of modules should share the same printing but have a center slot opposite to its partner (one up and the other down).



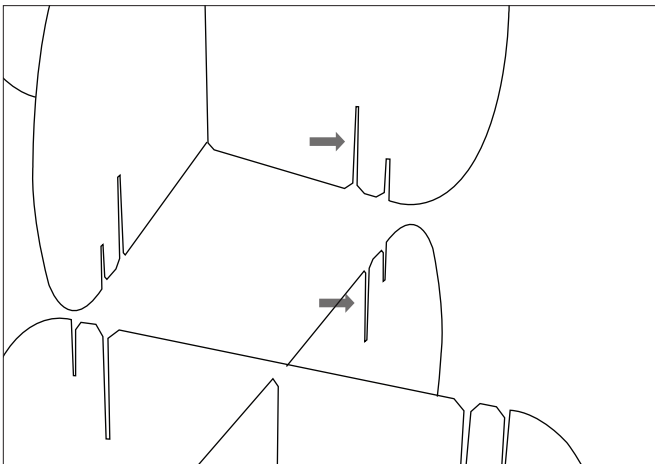
STEP 2 Insert one module into the other along the central slot creating the X assembly shown above. Repeat this step for each pair of modules.



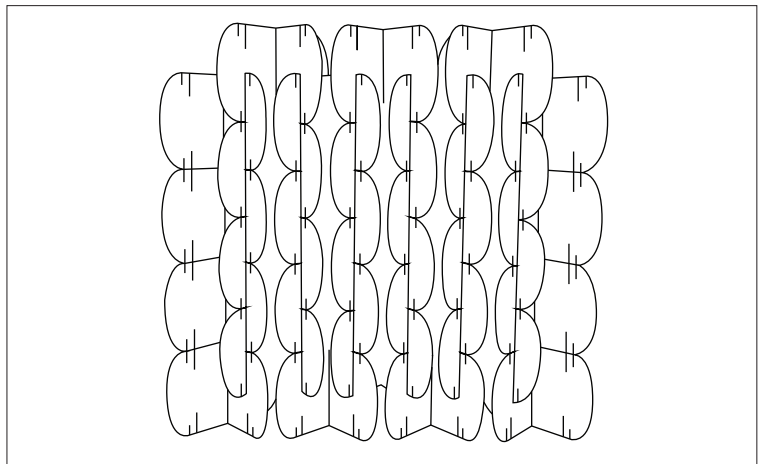
STEP 3 Arrange by number all the X's with the letter A in a row



Each X within a row is ordered by number. Each row is ordered by letter



STEP 4 Insert subsequent rows of X assemblies into the bottom row. Use the large side slots labeled above. Repeat this step as needed.



STEP 5 Enjoy!