

# WILL THIS FIT MY UNIT?

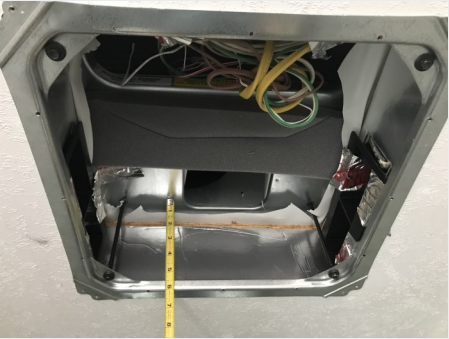


## INSTRUCTIONS FOR COLEMAN SHALLOW PLENUM PRODUCT COMPATIBILITY



### Remove air conditioning ceiling assembly.

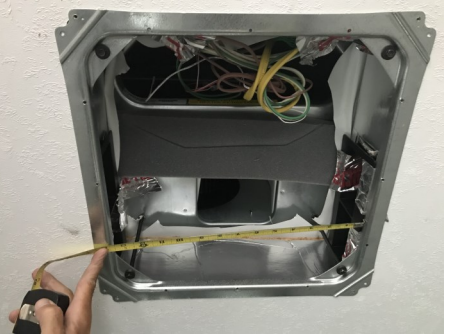
Remove all components unit you have full access to the plenum area.



### Measure the plenum depth

With Mounting Bracket attached . 4 1/8 Plus or minus 1/8

Without mounting bracket attached— 4 5/8 Plus or minus 1/8



### Verify the plenum width.

Standard 14" (13-3/4" minimum requirement).



### Check ducting dimensions.

Ducting size—should measure 1-1/2" x 7-1/2" for optimal performance.



### Vertical location of the ductwork

*(From bottom of AC to top of ducting)*

With Mounting Bracket attached 1 5/8 Plus or minus 1/8

Without Mounting Bracket attached 1 7/8 Plus or minus 1/8

*If your measurements do not match the above requirements for stock compatibility, please see link below for fitment instructions.*