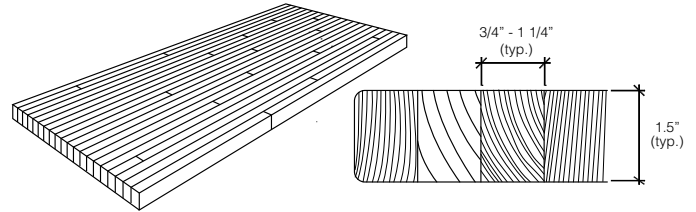


Claro Walnut - Side Grain

Last Revised 2/18/2019 - A&D

PRODUCT DESCRIPTION

Claro Walnut Side Grain tabletops are built with the edge grain of the wood facing up in parallel strips typically measuring between 3/4" and 1-1/4". Claro Walnut ranges in color from creamy sap wood swirls and medium to dark chocolate burgundy brown heart wood which develops a rich patina as it ages. The grain pattern is generally straight and includes curls and figuring with luxurious highlights.



SPECIFICATIONS

STANDARD SIZING

1 1/2" thick

Sized to your specifications

Rounding, shaping, and cutouts are available upon request

MATERIAL AND SURFACE

Janka hardness scale of 1130

Side grain tops are built with the edge grain facing up in parallel strips typically measuring 3/4" to 1-1/4" with random staggered butt joints

Finished top and side surfaces sanded to 220 grit

Straight edges with 1/8" ease on all edges (standard)

Holes and cracks filled down to 1/32" on the top surface

FINISHES, ADHESIVES AND FILLERS

Clear/Top Coat VOC: 213 g/l

Clear OSMO Polyx Oil Top Coat VOC: <270 g/l

Wood Glue VOC: 0 g/l

POTENTIAL LEED CREDITS

Materials and Resources Credit 5:

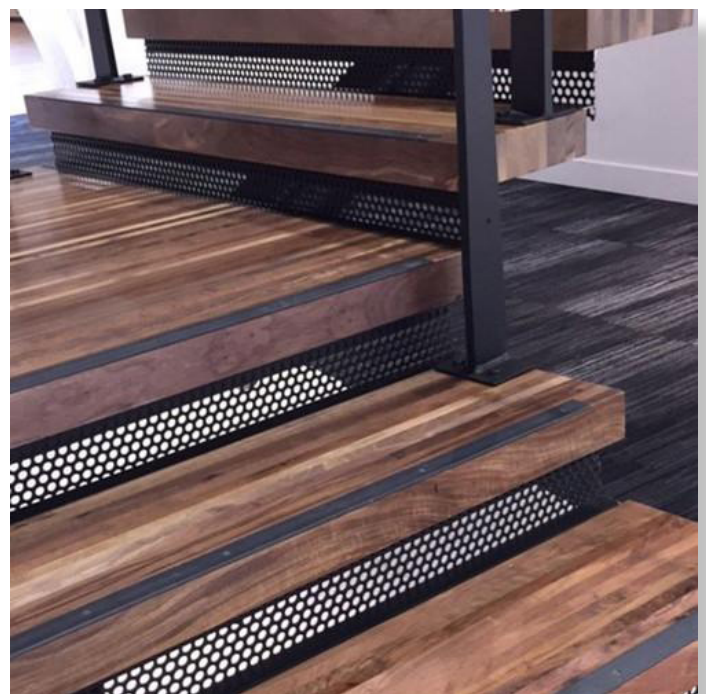
Regional Materials (Within 500 miles of Tumwater, WA)

Indoor Environmental Quality Credit 4.1:

Low-emitting Materials-Adhesives

Indoor Environmental Quality Credit 4.2:

Low-emitting Materials-Paints and Coatings



Windfall Lumber