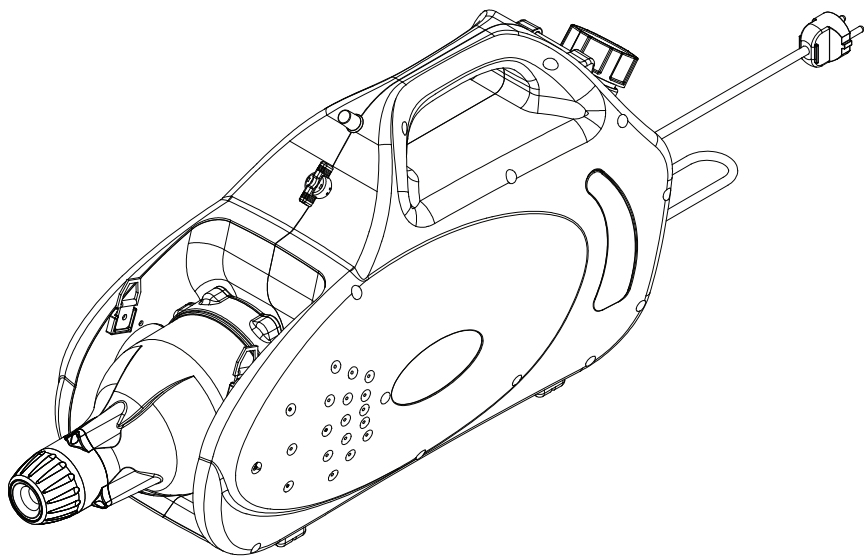


Electric ULV cold atomizer

X1 Atomizer



X1INNOVATIONS

x1innovations.com

Please read this manual before use to ensure proper safety, storage and care.

SPECIFICATIONS

Type name

X1 Atomizer

Rated voltage

120V, 60 Hz

Power consumption

1.4kW

Tank capacity

4L (1.06 gal.)

Discharge rate

1.2L/min.

Spray distance

10–36 ft.

Particle size

20–50 microns

Dimensions

25.7" × 7.8" × 12.2"

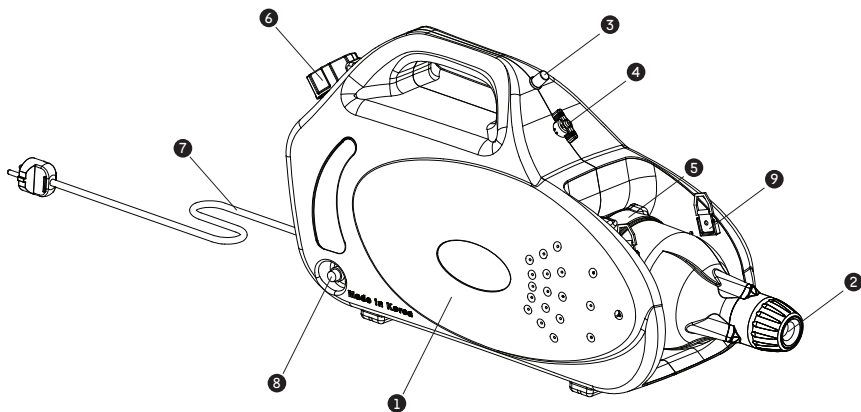
Dry weight

9.6 lbs.

PRODUCT INCLUDES:

- Main body
- Shoulder strap
- User guide
- Extra fuse

CONFIGURATION



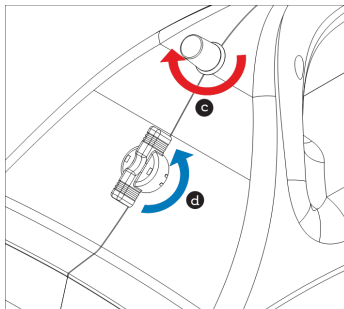
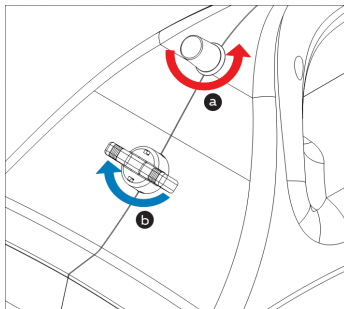
- ① Main body
- ② Injection nozzle
- ③ Air control switch

- ④ Solution control valve
- ⑤ Motor housing
- ⑥ Tank cap

- ⑦ Wire
- ⑧ Fuse
- ⑨ Shoulder strap ring

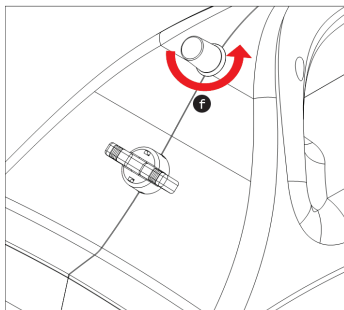
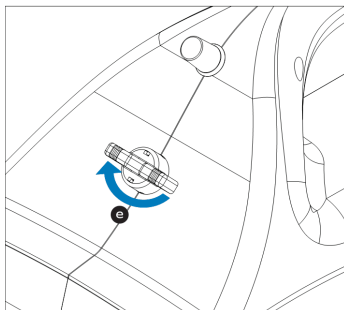
HOW TO USE THE X1 ATOMIZER

- 1 After pouring an appropriate amount of liquid into the tank, lock the cap and make sure it's secure.
- 2 Don't plug in the machine until the air control switch and solution control valves are off. To ensure they're off, turn the air control switch **a** counterclockwise and turn the solution control valve **b** clockwise to ensure that both valves are locked. Plug the machine into the power source.
- 3 Ensure that the spray nozzle is facing away from anyone and turn the air control switch **c** clockwise to adjust the air speed.
- 4 Once the air speed is set to the desired intensity, adjust the amount of liquid by opening the solution control valve **d** and turning it counterclockwise.



To stop the X1 Atomizer:

- 1 Make sure to completely close the solution control valve **e**.
- 2 Adjust air control switch **f** to push out any solution remaining in nozzle. Then turn air control switch **f** counterclockwise and stop the motor.
- 3 Unplug the power cord.
- 4 Empty the solution tank and clean it.
- 5 Use clean water to wash nozzle.



HELPFUL TIPS

Chemicals

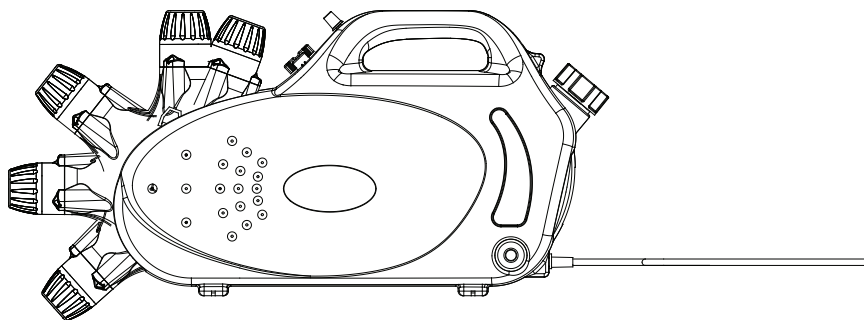
- Only use approved chemicals and solutions; improper use of chemicals and solutions can be dangerous.
- Use appropriate Personal Protective Equipment (including eye protection, respirators, gloves, etc.) whenever using the X1 Atomizer.

Power line

- It's recommended to connect the X1 Atomizer to an extension cord when using in large spaces. For an additional power line, use a 125V/10A/3C (Earth) cord.
- Use extra caution to protect against electrical accidents and shocks when using the X1 Atomizer in humid environments.

FEATURES

- Ultra-fine particles of cleaning solutions are sprayed through the high-speed rotating nozzle for optimal sanitizing and disinfecting.
- Cleaning solutions being dispersed in ultra-fine particles means you're protected from inhalation while the effect of disinfection is maximized.
- Nozzle adjustability offers optimum flexibility of use and reduces fatigue.
- The injection nozzle's built-in design makes the X1 Atomizer easy to store.
- You can fully adjust the speed, distance, and amount of spray.
- The X1 Atomizer can be used for disinfecting and sterilizing large buildings, offices, toilets, public buildings and hospitals.



PRECAUTIONS FOR USE AND STORAGE

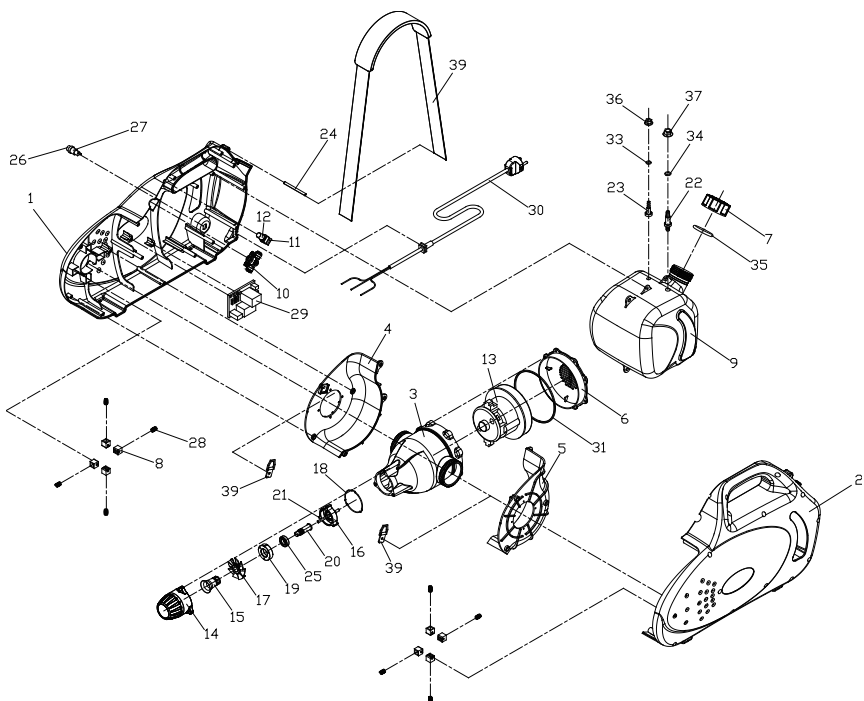
Use precautions

- Please use the power cord equipped with a grounded circuit breaker.
- Do not use when the power line is wet, and don't touch the cord with wet hands.
- Do not use this device with more than one plug in one electrical outlet.
- Check the status of the power line before operation. If the line is damaged, call a certified technician to replace the cord.
- Always pull the plug out of the electrical outlet when the machine is disassembled or not in use.
- Disconnect the power once the tank is charged.
- Never plug in the power when the machine is wet.
- Do not operate the machine without wearing proper protective equipment.
- Do not spray towards humans or electrical appliances, and always spray away from yourself.
- Keep away from children.
- Always use the manufacturer-recommended parts for the machine to ensure safety.
- To prevent damage, keep a proper distance when spraying at maximum settings.
- Be careful of fire and shock.
- Do not use water mixed with toxic or flammable materials.
- If there is unusual noise, smell or smoke, immediately unplug the X1 Atomizer and contact the service center to avoid the risk of fire or an electric shock.

Storage precautions

- Before cleaning the machine, unplug it first and do not use water or detergent.
- Make sure to clean the tank after use and keep it away from children.
- Keep the machine in a dry place away from direct sunlight at 50F to 104F.

PARTS DRAWING



PARTS LIST

MODULE NAME	NO	PART NAME	SPEC.	CODE-NO	QTY
Body set	1	Cover_L		APN-001	1
	2	Cover_R		APN-002	1
	4	Cover case_L		APN-004	1
	5	Cover case_R		APN-005	1
	8	Rack		APN-008	8
	28	Spring	8-20	APN-028	8
	39	Shoulder strap ring		APN-039	2
	24	Shoulder strap pin		APN-024	1
Motor housing set	3	Motor housing		APN-003	1
	6	Motor housing cover		APN-006	1
	31	O-ring	G-120	APN-031	1
Motor	13	Motor	1.4kW	APN-013	1
Tank set	9	Tank		APN-009	1
	22	Water nipple		APN-022	1
	23	Air nipple		APN-023	1
	33	O-ring	P7	APN-033	1
	34	O-ring	P10	APN-034	1
	36	Flange nut	M8	APN-036	1
	37	Flange nut	M10	APN-037	1
Tank cap	7	Tank cap		APN-007	1
	35	O-ring	AN325	APN-035	1
Valve	10	Valve	1/4"	APN-010	1
Switch	11	Switch	100k	APN-011	1
	12	Knob	Red	APN-012	1
Air nozzle	14	Air nozzle		APN-014	1
Nozzle set	15	Bel cup		APN-015	1
	16	Bear housing		APN-016	1
	17	Turbine		APN-017	1
	18	Gasket		APN-018	1
	19	Bearing bush		APN-019	1
	20	Shaft		APN-020	1
	21	Tube		APN-021	1
	25	Bearing	S6901ZZ	APN-025	1
Fuse set	26	Fuse	5*20 10A	APN-026	1
	27	Fuse holder	5*20	APN-027	1
PCB	29	PCB	220V, 1.4kW	APN-029	1
Power cord	30	Power cord	10A 6m	APN-030	1
Shoulder strap	38	Shoulder strap		APN-038	1
Miscellaneous		Filter			1
		Filter cover			1

BEFORE CONTACTING X1 INNOVATIONS

- Check if the power cord is plugged in to an electrical outlet.
- Test the electrical outlet to ensure it's working properly.
- Check if the voltage is 120V.
- Check the fuse.
- If the machine isn't working even after the fuse is replaced, contact X1 Innovations.
- Check if the suction hose inside the tank is clogged. If it is, remove and clean impurities in the suction hose.
- If you notice any parts becoming deformed or damaged by heat, please contact X1 Innovations.