



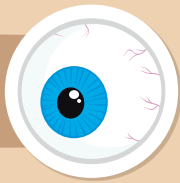
3



2



6



9



5



1



5



5



3



2



4



2



7



2



1



1



9



3



2



2



3



1



4



4



5



4



5



3



2



5



9



1



4



3



1



6



2



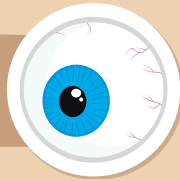
3



4



9



1



7



5



3



3



1



4



8



2



5



3



9



4



9



4



3



1



2



10



10



3



5



2



4



5



11



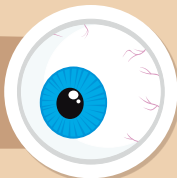
4



3



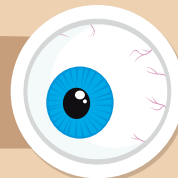
8



10



2



12