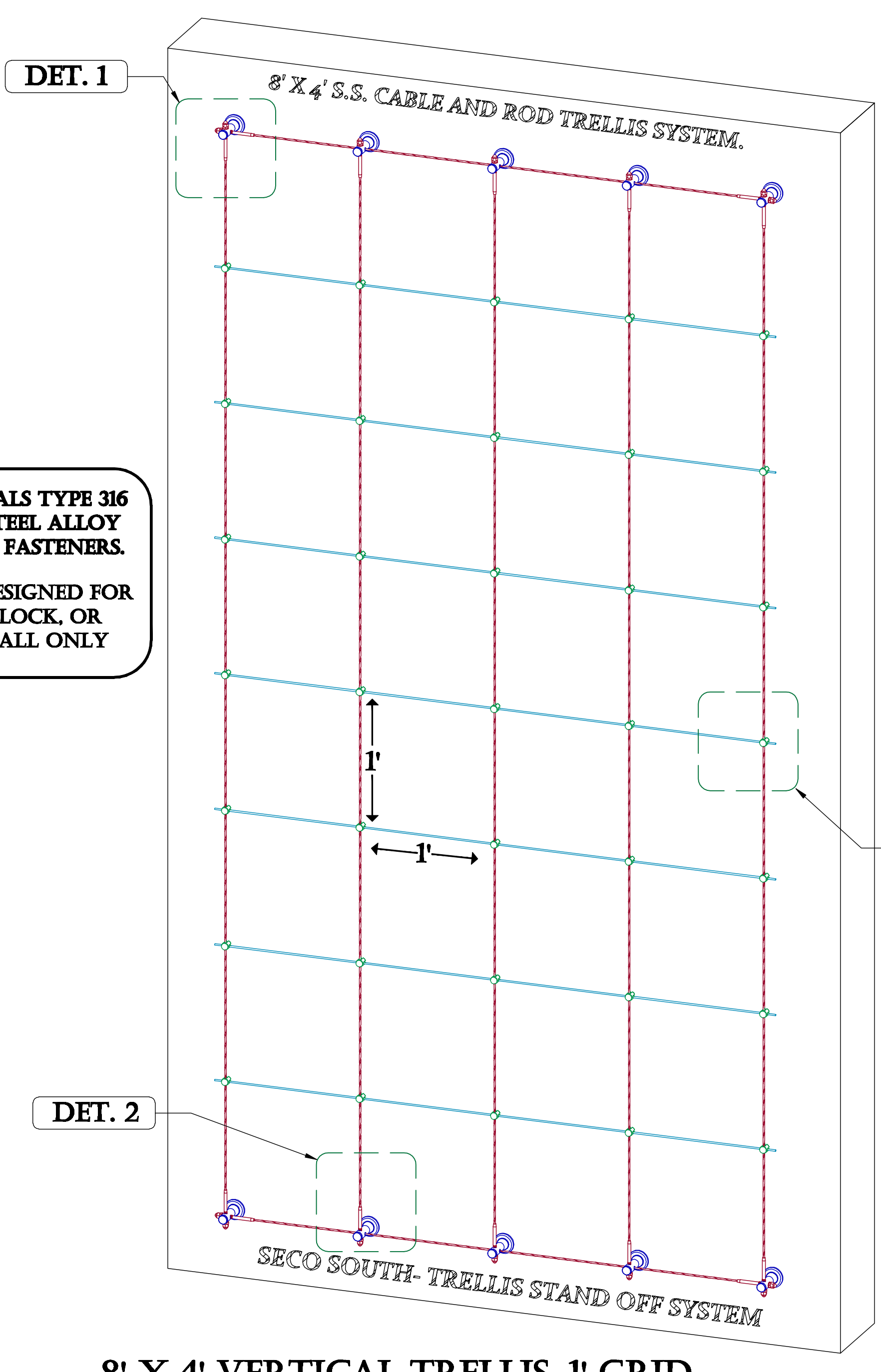


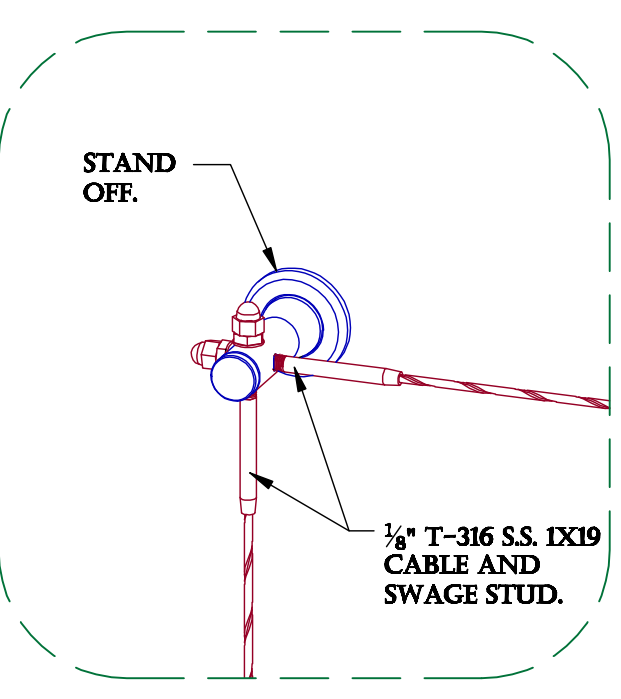
ALL MATERIALS TYPE 316 STAINLESS STEEL ALLOY EXCEPT FOR FASTENERS. THIS KIT IS DESIGNED FOR A BRICK, BLOCK, OR PRECAST WALL ONLY



8' X 4' VERTICAL TRELLIS, 1' GRID

SCALE: 1 1/2" = 1'

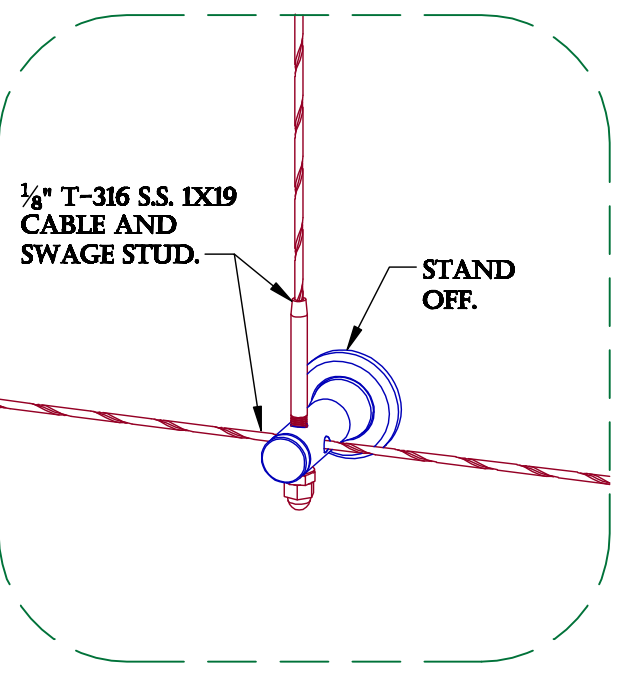
TYPICAL CORNER ATTACHMENT.



MOUNTING DETAIL 1.

SCALE: 4" = 1'

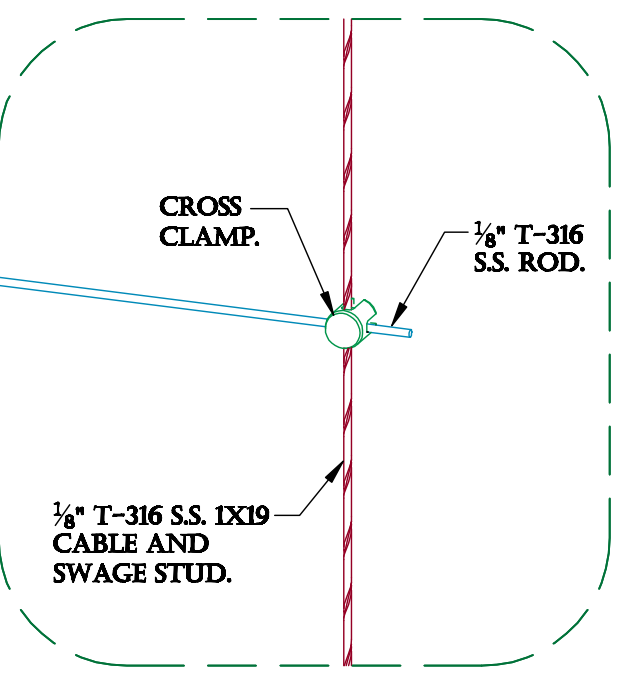
TYPICAL END/ INTERMEDIATE ATTACHMENT.



MOUNTING DETAIL 2.

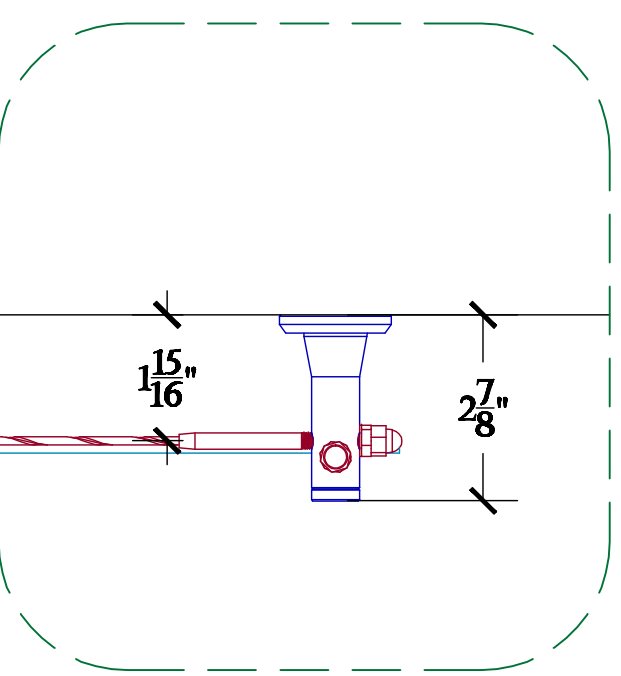
SCALE: 4" = 1'

TYPICAL CABLE AND ROD INTERSECTION ATTACHMENT.



MOUNTING DETAIL 3.

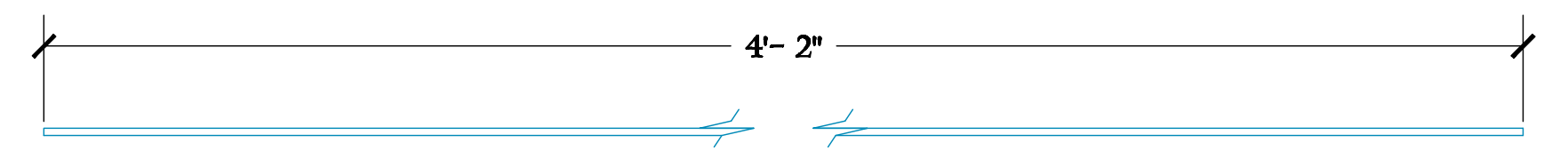
SCALE: 4" = 1'



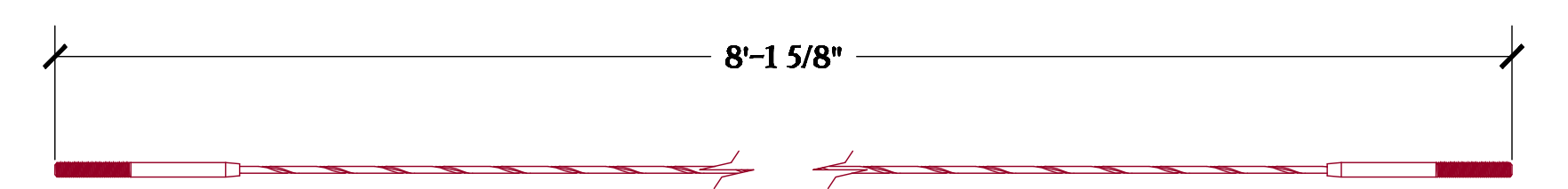
TOP VIEW DETAIL.

SCALE: 4" = 1'

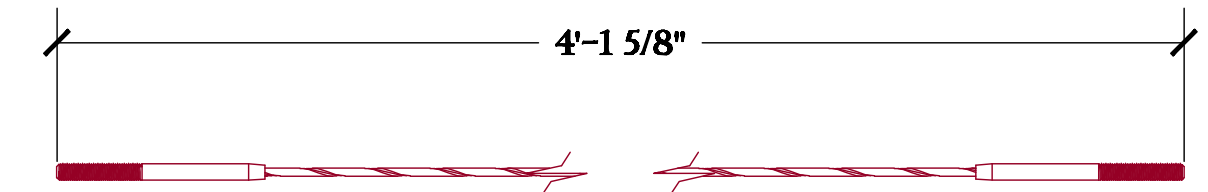
THE 4' X 8' KIT INCLUDES THE FOLLOWING:



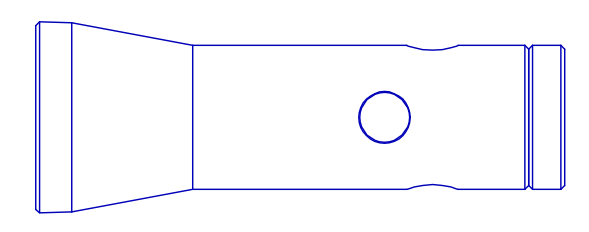
Ø 3/8" T-316 S.S. ROD : QTY- 7



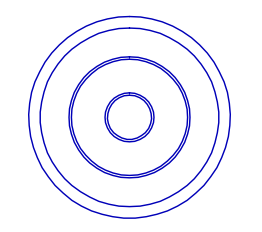
Ø 3/8" LONG CABLE W/ SWAGE STUDS : QTY- 5



Ø 3/8" SHORT CABLE W/ SWAGE STUDS : QTY- 2



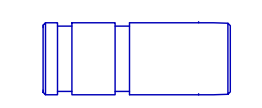
3" STAND OFF BODIES : QTY- 10



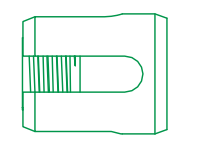
ANTI CRUSH BASE : QTY- 10



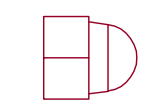
3/8" X 3" S.S. SOCKET HEAD SCREW : QTY- 10



SINGLE EXPANSION ANCHORS : QTY- 10



S.S. CROSS CLAMPS : QTY- 35



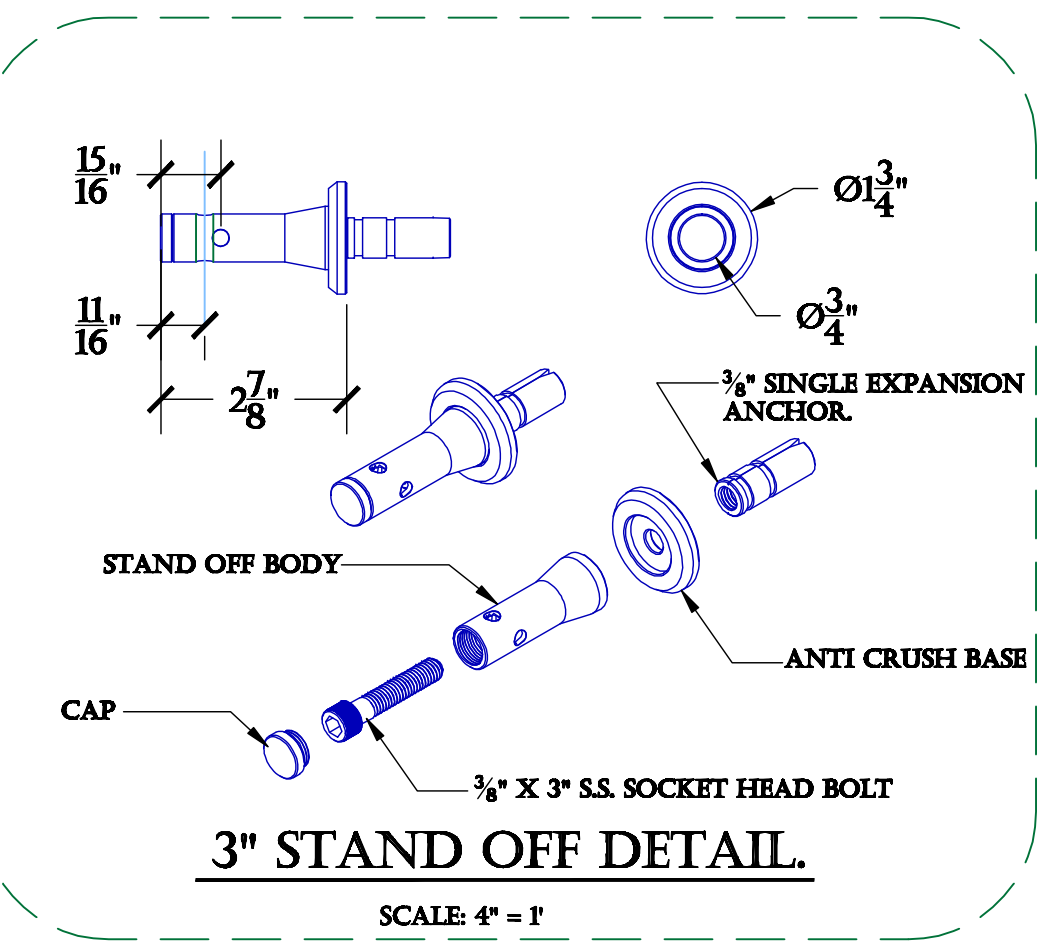
S.S. CAP NUTS : QTY- 14



S.S. JAM NUTS : QTY- 14

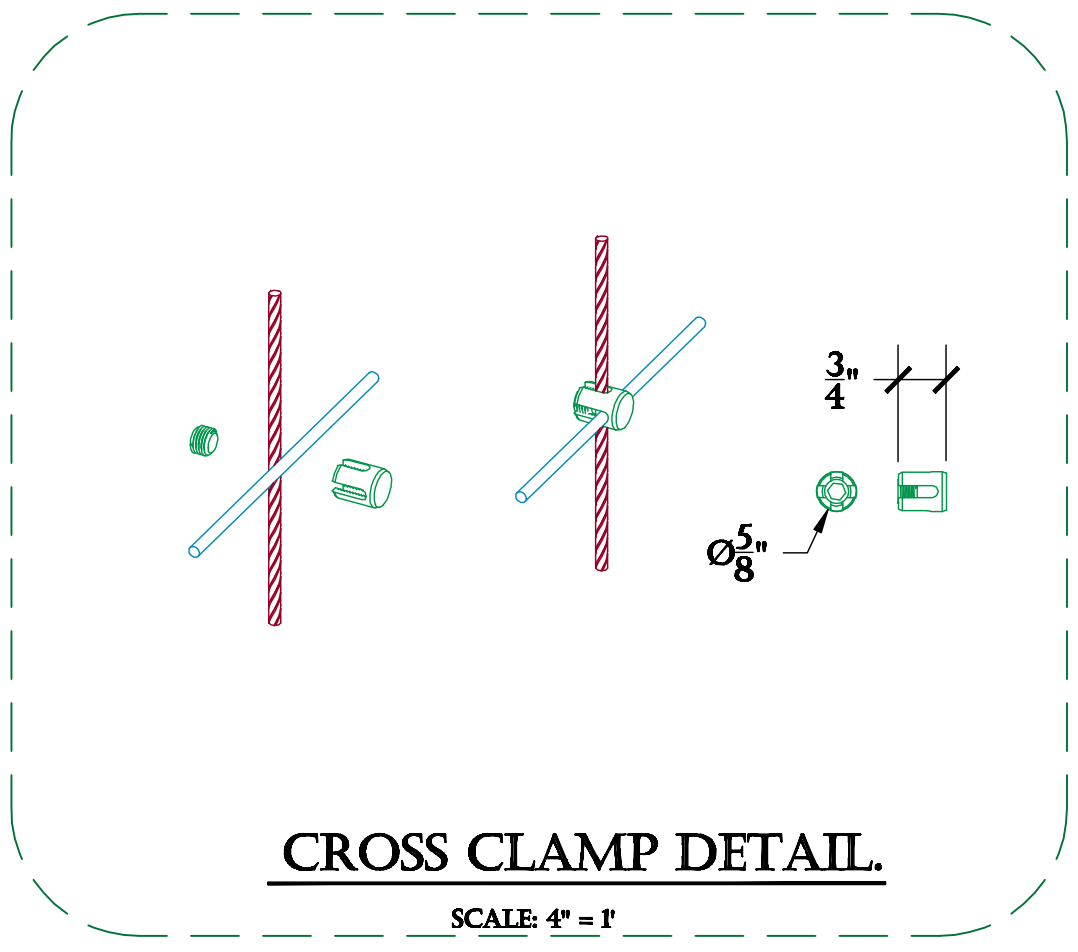


S.S. FLAT WASHERS : QTY- 14



3" STAND OFF DETAIL.

SCALE: 4" = 1'



CROSS CLAMP DETAIL.

SCALE: 4" = 1'

PRODUCT: S.S. CABLE AND ROD TRELLIS SYSTEM.  
 CONTENT: "STAND OFF " 8'X4' STANDARD SYSTEM DETAILS.  
 DRAWN BY: KELLER, C.  
 DATE: 10-01-15  
 PROPRIETARY AND CONFIDENTIAL: THE INFORMATION CONTAINED IN THIS DRAWING IS THE SOLE PROPERTY OF SECO SOUTH INC. ANY REPRODUCTION IN PART OR AS A WHOLE WITHOUT THE WRITTEN PERMISSION OF SECO SOUTH INC. IS PROHIBITED.  
 2111 34TH WAY LARGO, FL 33771  
 PH: 727-536-1924  
 FAX: 727-539-5314  
 SALES@SECOOUTH.COM

