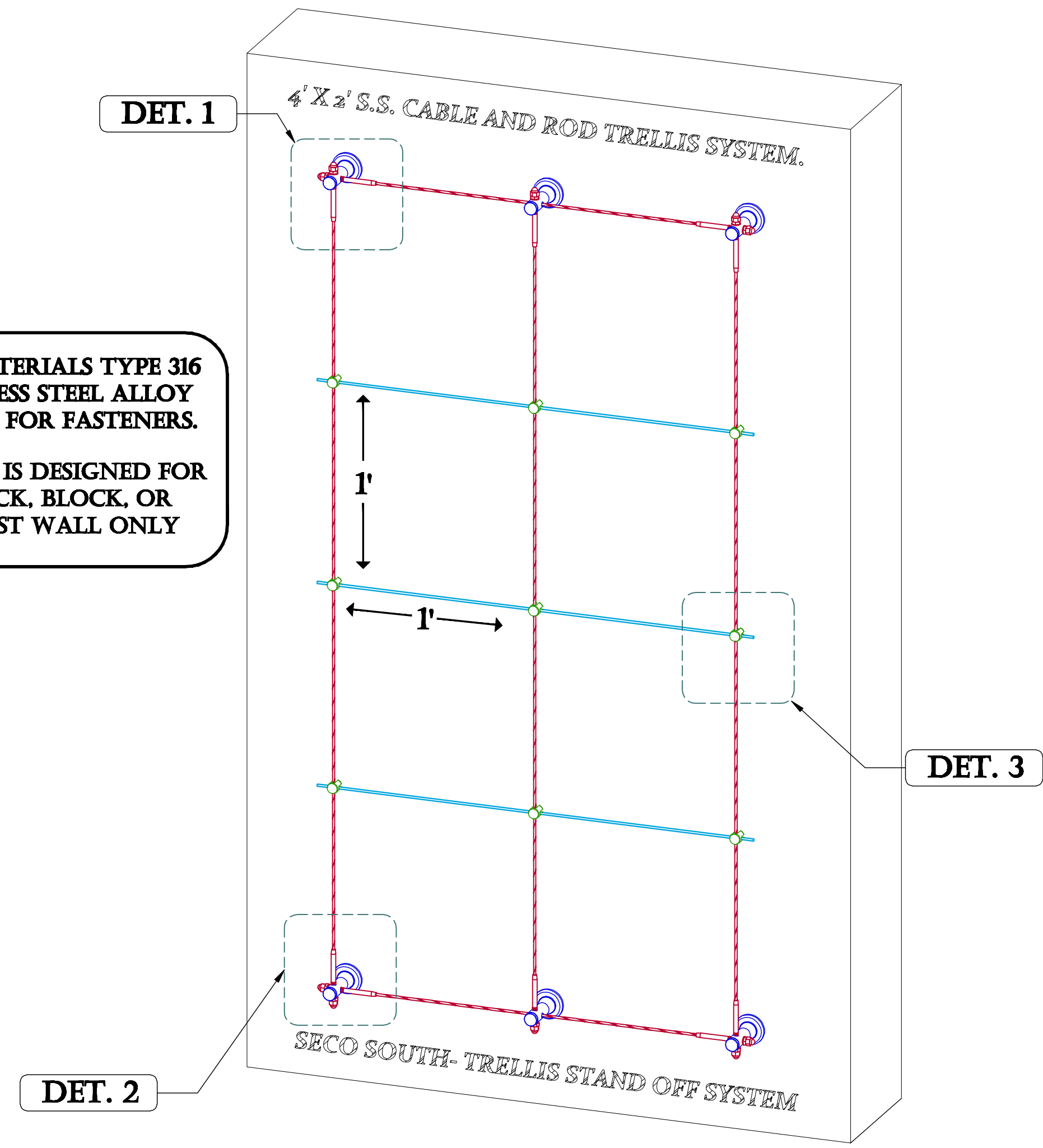
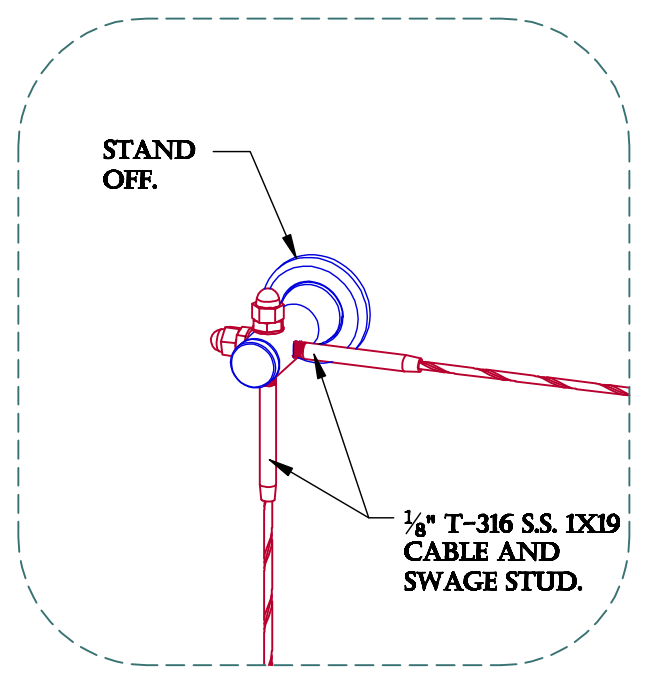


ALL MATERIALS TYPE 316 STAINLESS STEEL ALLOY EXCEPT FOR FASTENERS.  
THIS KIT IS DESIGNED FOR A BRICK, BLOCK, OR PRECAST WALL ONLY



**4' X 2' VERTICAL TRELLIS, 1' GRID**  
SCALE: 2" = 1'

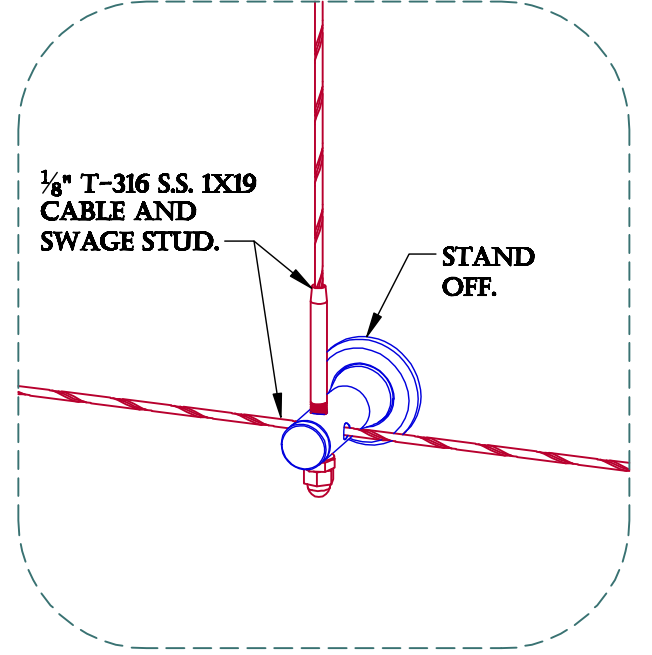
TYPICAL CORNER ATTACHMENT.



**MOUNTING DETAIL 1.**

SCALE: 4" = 1'

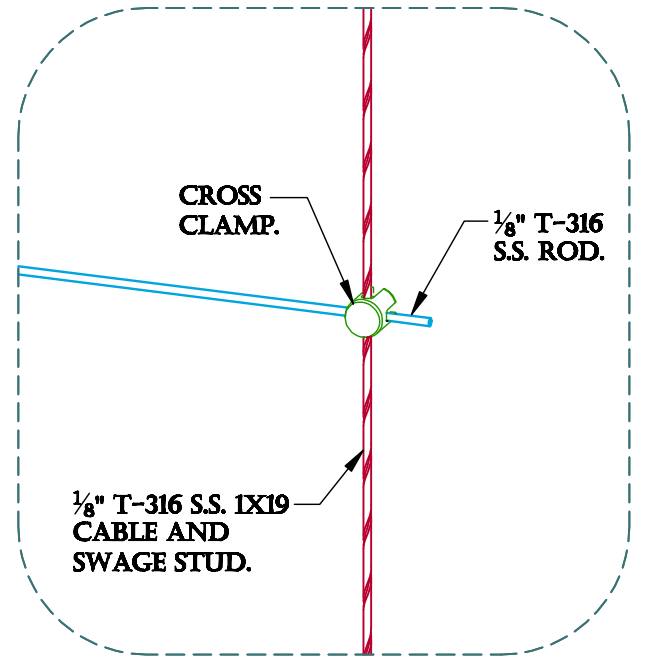
TYPICAL END/ INTERMEDIATE ATTACHMENT.



**MOUNTING DETAIL 2.**

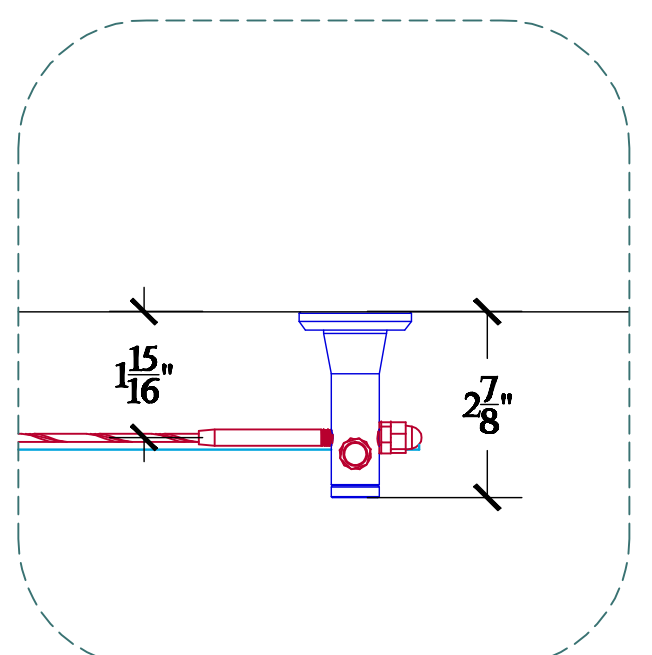
SCALE: 4" = 1'

TYPICAL CABLE AND ROD INTERSECTION ATTACHMENT.



**MOUNTING DETAIL 3.**

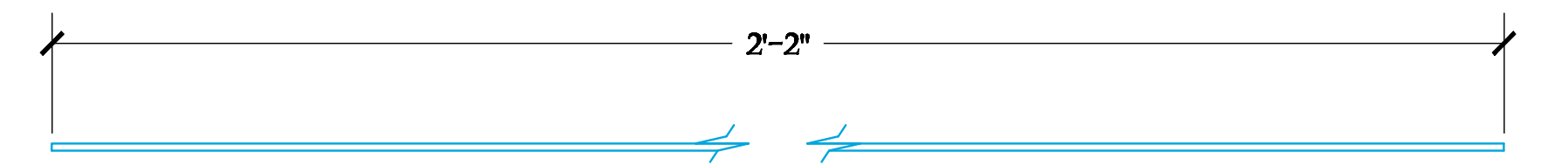
SCALE: 4" = 1'



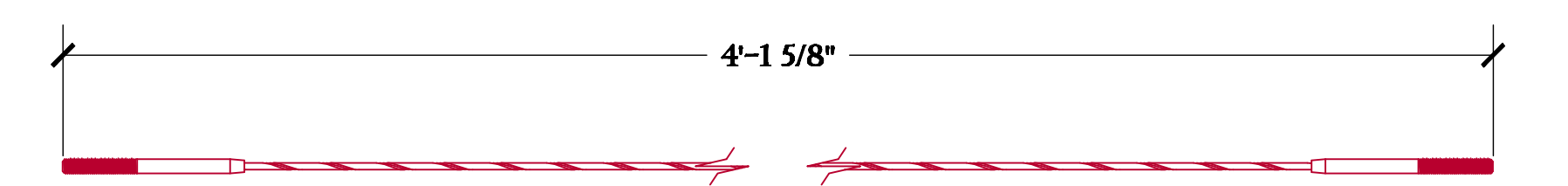
**TOP VIEW DETAIL.**

SCALE: 4" = 1'

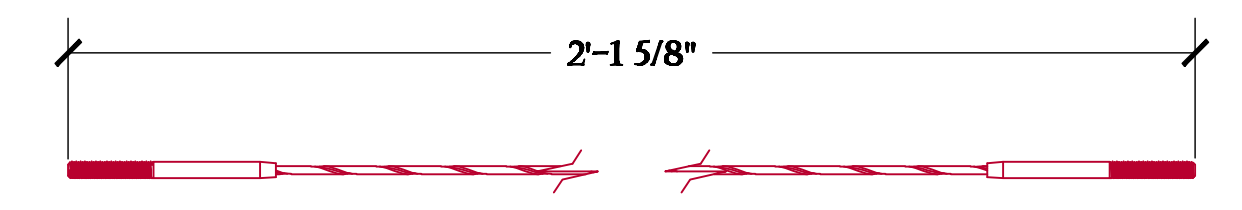
**THE 2' X 4' KIT INCLUDES THE FOLLOWING:**



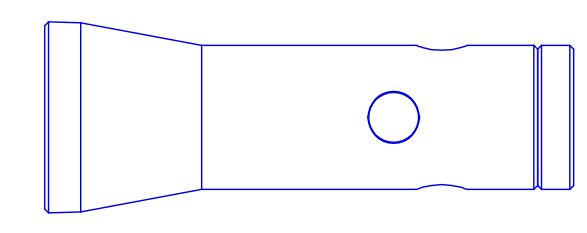
$\varnothing 1/8$ " T-316 S.S. ROD : QTY- 3



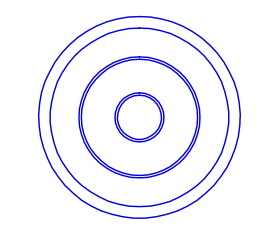
$\varnothing 1/8$ " LONG CABLE W/ SWAGE STUDS : QTY- 3



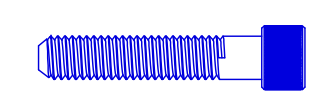
$\varnothing 1/8$ " SHORT CABLE W/ SWAGE STUDS : QTY- 2



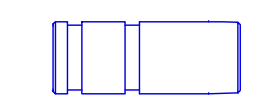
3" STAND OFF BODIES : QTY- 6



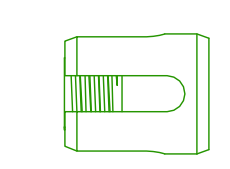
ANTI CRUSH BASE : QTY- 6



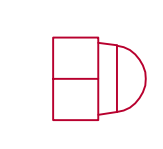
3/8" X 3" S.S. SOCKET HEAD SCREW : QTY- 6



SINGLE EXPANSION ANCHORS : QTY- 6



S.S. CROSS CLAMPS : QTY- 9



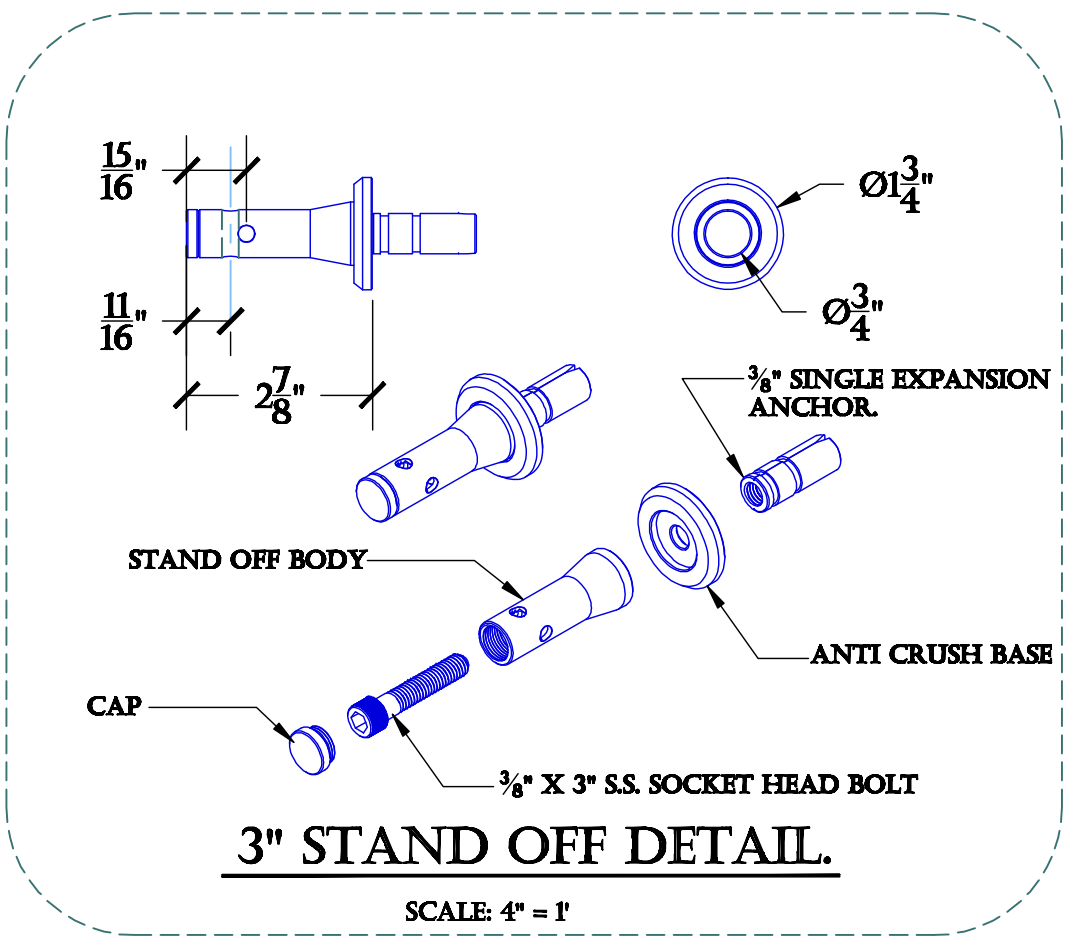
S.S. CAP NUTS : QTY- 10



S.S. JAM NUTS : QTY- 10

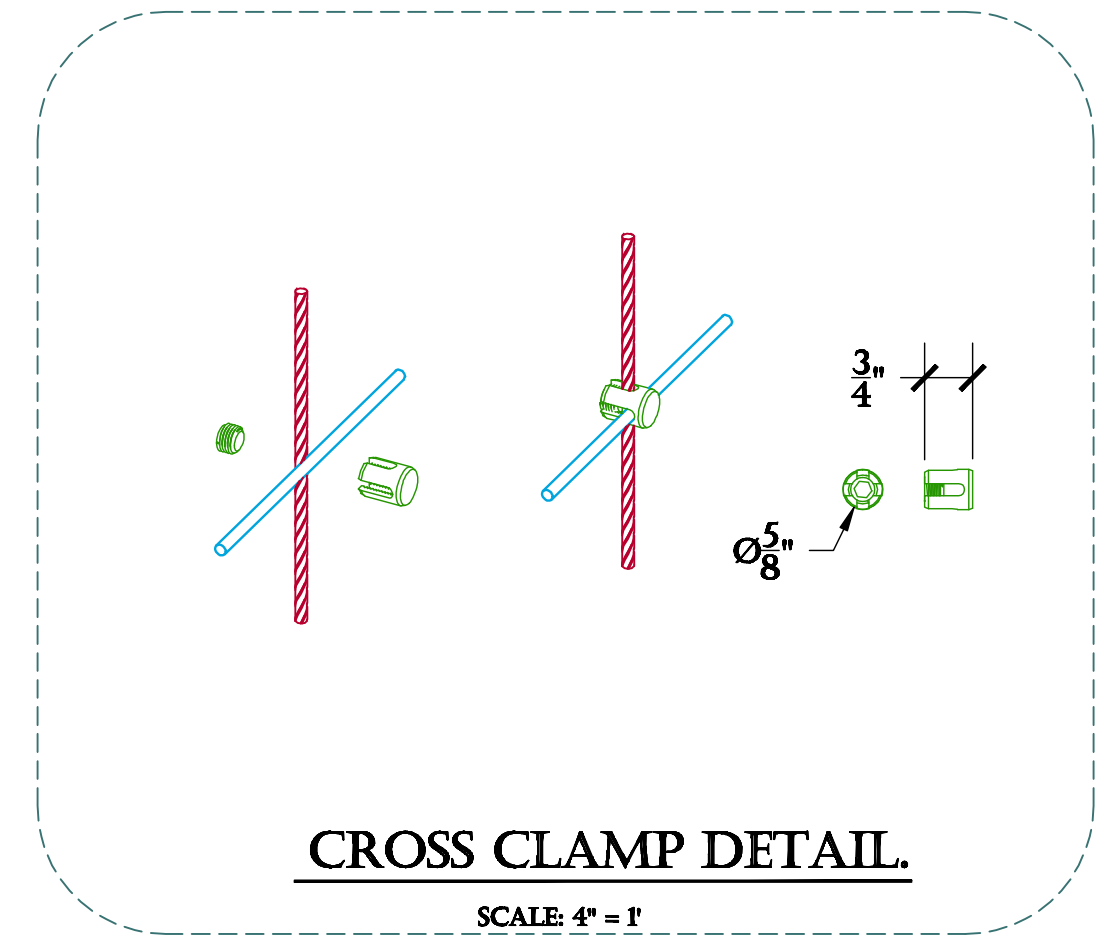


S.S. FLAT WASHERS : QTY- 10



**3" STAND OFF DETAIL.**

SCALE: 4" = 1'



**CROSS CLAMP DETAIL.**

SCALE: 4" = 1'

<b>PRODUCT:</b> S.S. CABLE AND ROD TRELLIS STAND OFF SYSTEM.	
<b>CONTENT:</b> "STAND OFF" 4'X2' VERTICAL, STANDARD SYSTEM DETAILS.	
<b>DRAWN BY:</b> KELLER, C.	
<b>DATE:</b> 10-01-15	
<small>PROPRIETARY AND CONFIDENTIAL: THE INFORMATION CONTAINED IN THIS DRAWING IS THE SOLE PROPERTY OF SECO SOUTH INC. ANY REPRODUCTION IN PART OR AS A WHOLE WITHOUT THE WRITTEN PERMISSION OF SECO SOUTH INC. IS PROHIBITED.</small>	
2111 34TH WAY LARGO, FL 33771 PH: 727-536-1924 FAX: 727-539-6314 SALES@SECOOUTH.COM	