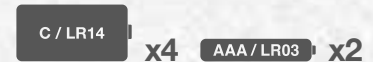


mamas
& papas®

Starlite Swing

STSW_0241_0817_V10

© Mamas & Papas Ltd. 2017



thank you...

FOR ORDERING FROM MAMAS & PAPAS

Mamas & Papas started life as a family, then became a business. The founders wanted more for their children, so they took matters into their own hands. This core belief remains at the heart of what we do, using personal experiences, customer insights and rigorous testing, to create innovative products with thoughtful designs.

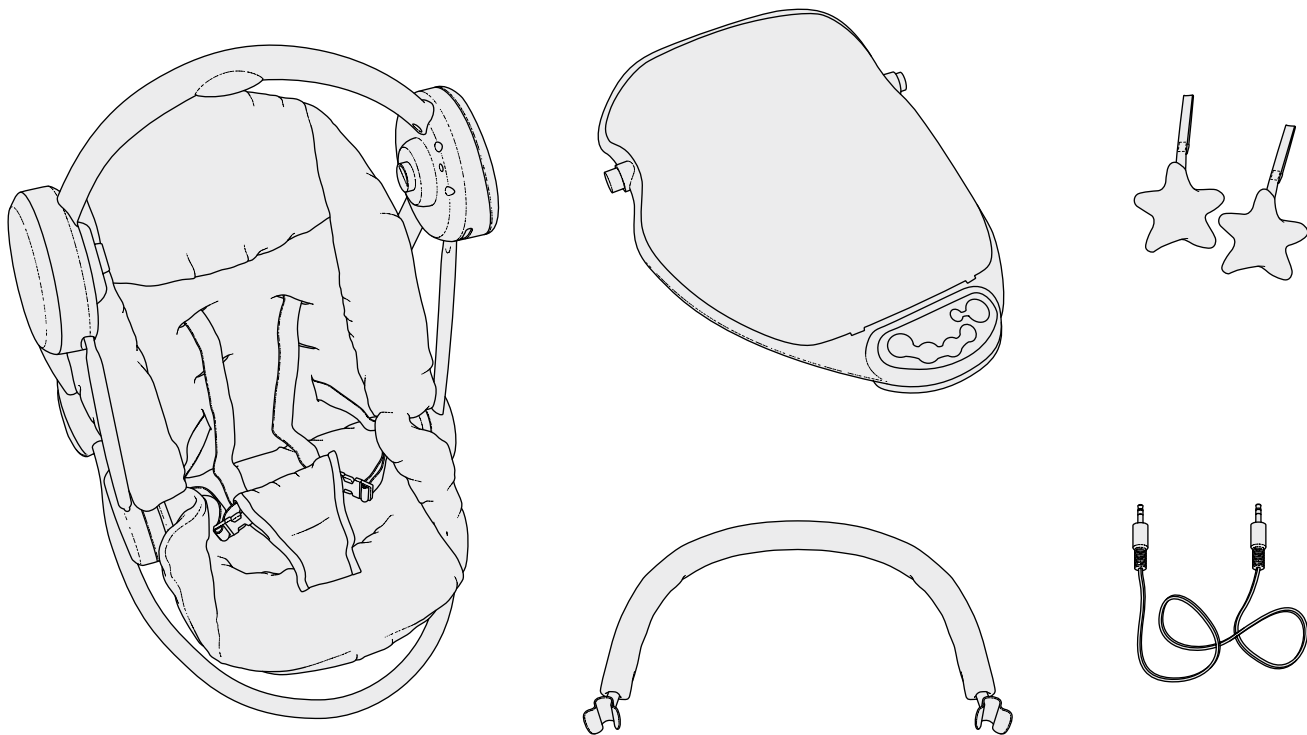
We bring style and confidence to parenting, letting you flourish, no matter how you experience it.

EN

IMPORTANT —
KEEP THESE INSTRUCTIONS
FOR FUTURE REFERENCE

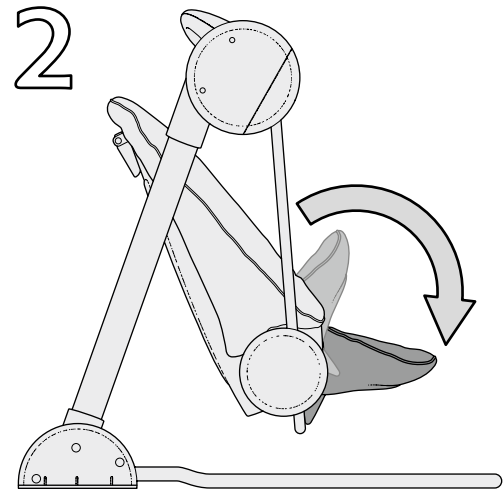
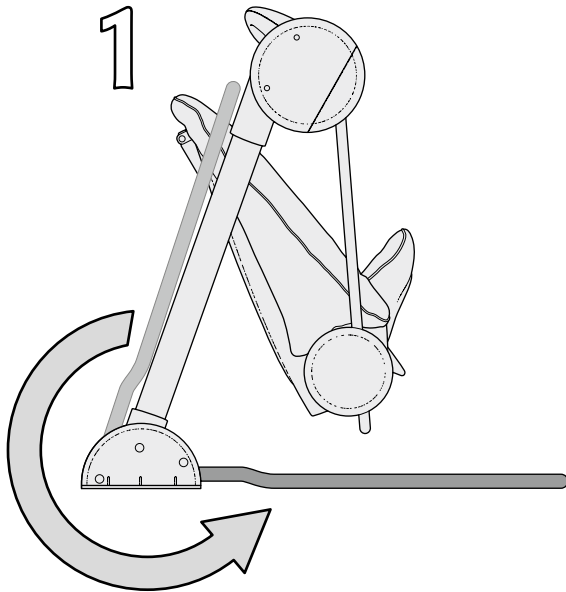


What's in the box



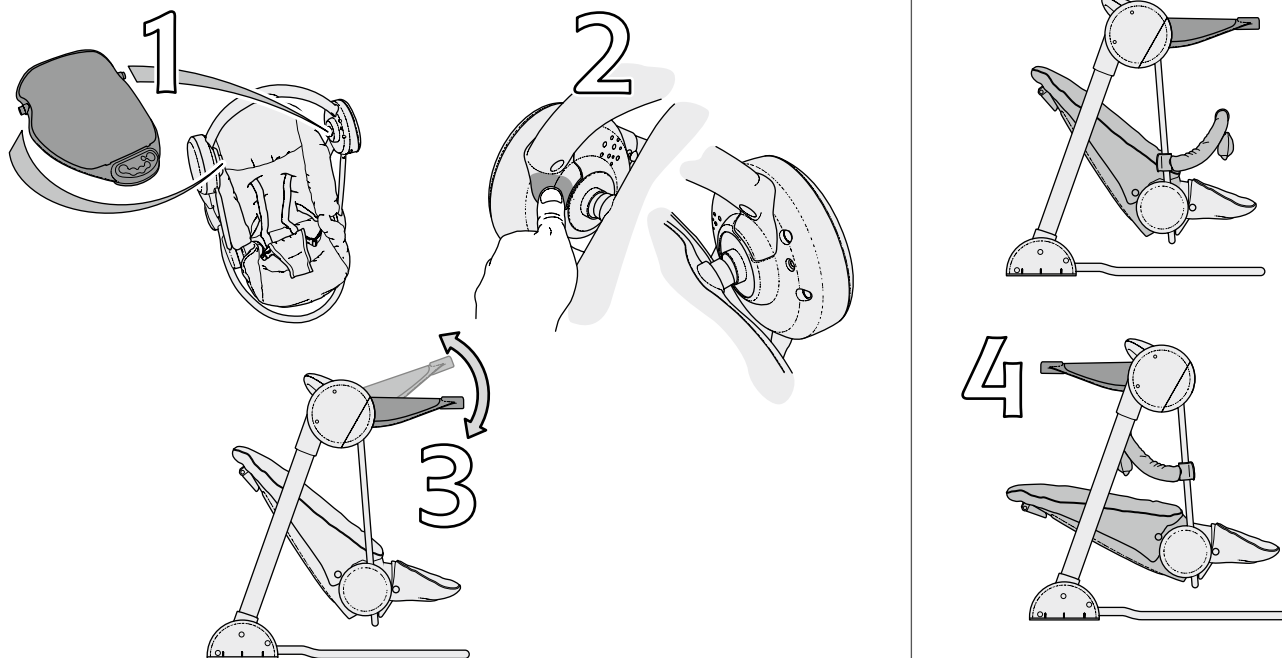
Design may vary from illustration.

Opening the frame



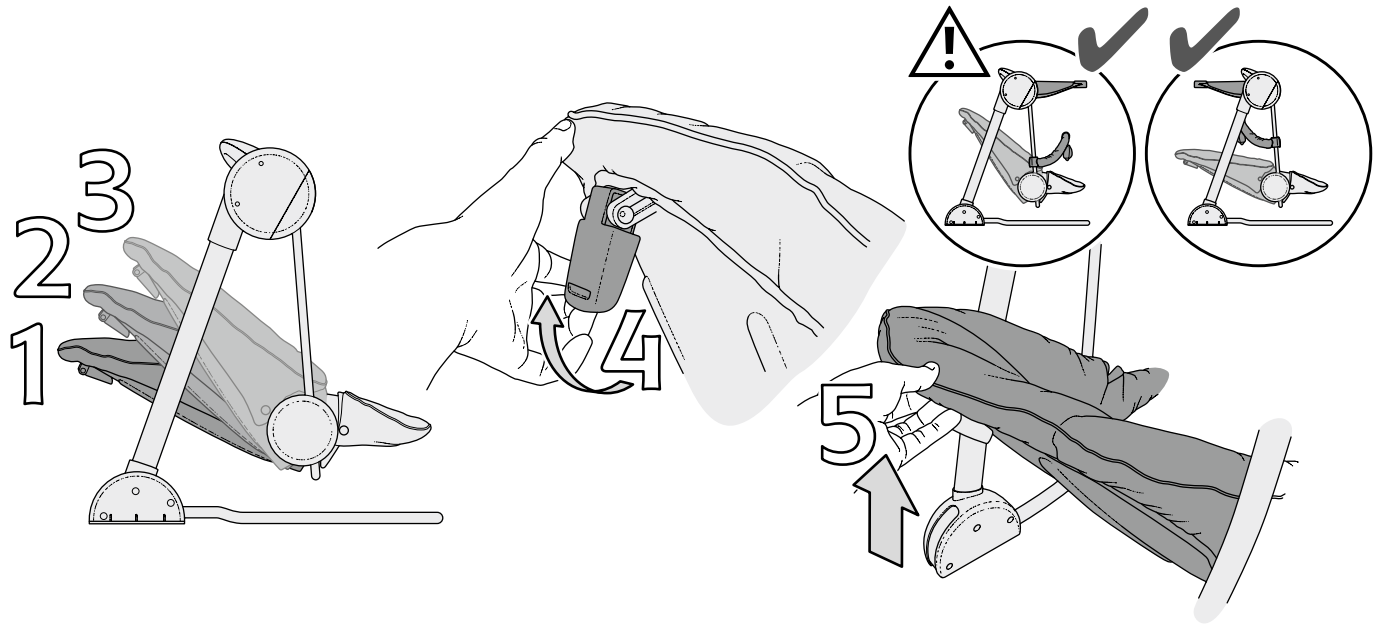
1. Grip the top of the metal tube at the back of the swing and rotate it until it locks into the foot moulding.
 2. Push the leg rest on the front of the seat downwards until it is in the bottom position.
-

Attaching the canopy



1. Align the lugs on the sides of the canopy with the slots in the handle brackets.
2. Slot the lugs on the canopy into the slots in the handle brackets.
3. The canopy can be tilted up or down by lifting or pushing down on the front of the canopy with your hand.
4. The canopy can also be fitted in the reverse position so that when the seat is in the most reclined position the light show can still be seen.

Adjusting the backrest



The backrest can be adjusted into three different positions.

Ensure that the seat is only used in the fully reclined position (1) until the child can hold its head up unassisted.

Lowering the backrest: Lift the handle at the top of the backrest (4) upwards.

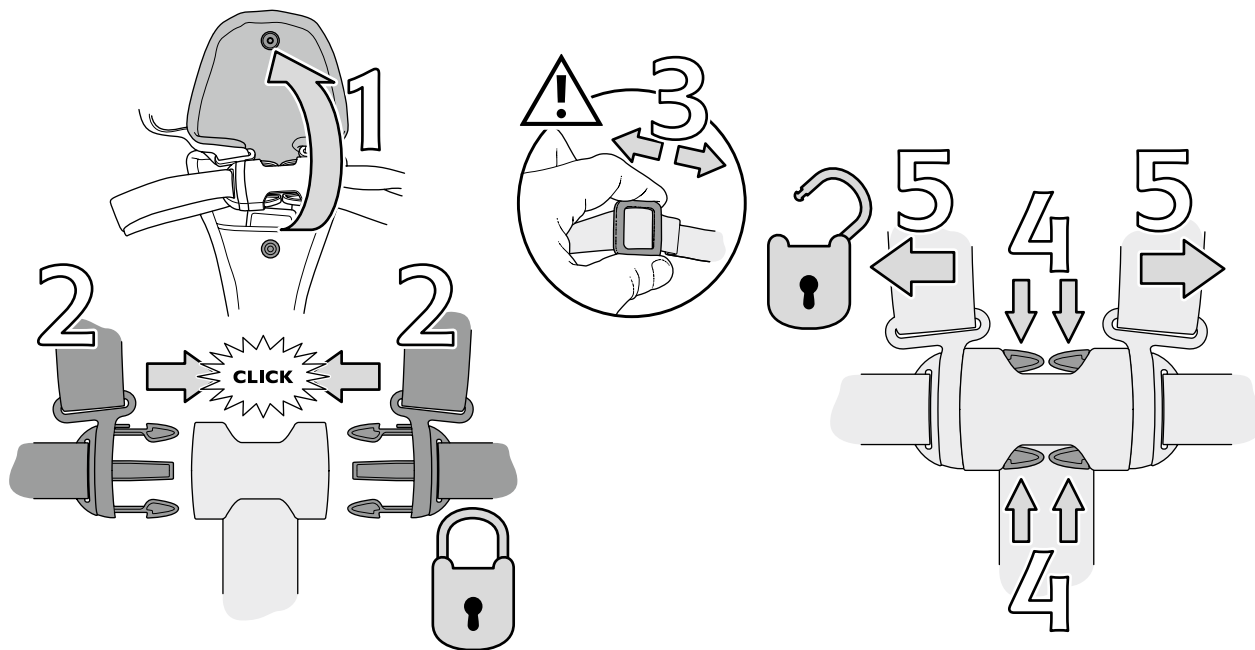
Lower the backrest into the new position and release the handle.

Always check the backrest is locked into position.

Raising the backrest: Grip the middle of the top of the backrest (5) and lift upwards into the desired position.

Always check the backrest is locked into position.

Using the harness



Never place your child in the seat without fitting and adjusting the safety harness.

Opening the harness cover: Pull the front of the harness cover (1) upwards to access the buckle.

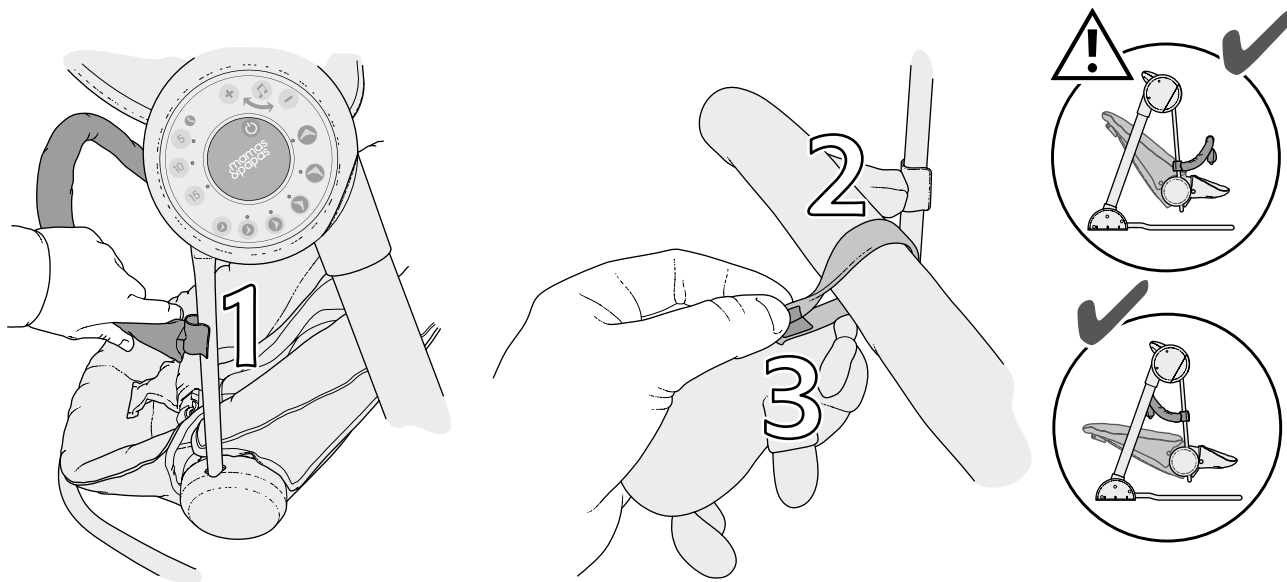
Fasten the press studs on the harness cover to close. Always close the cover when the child is in the cradle.

Locking the harness: Push the locking catch (2) into the buckle until it clicks into place. Repeat the process for the lock on the other side.

Adjusting the harness length: To loosen the harness feed the webbing back through the adjustment buckle (3). To tighten the harness, pull the free end of the webbing outwards.

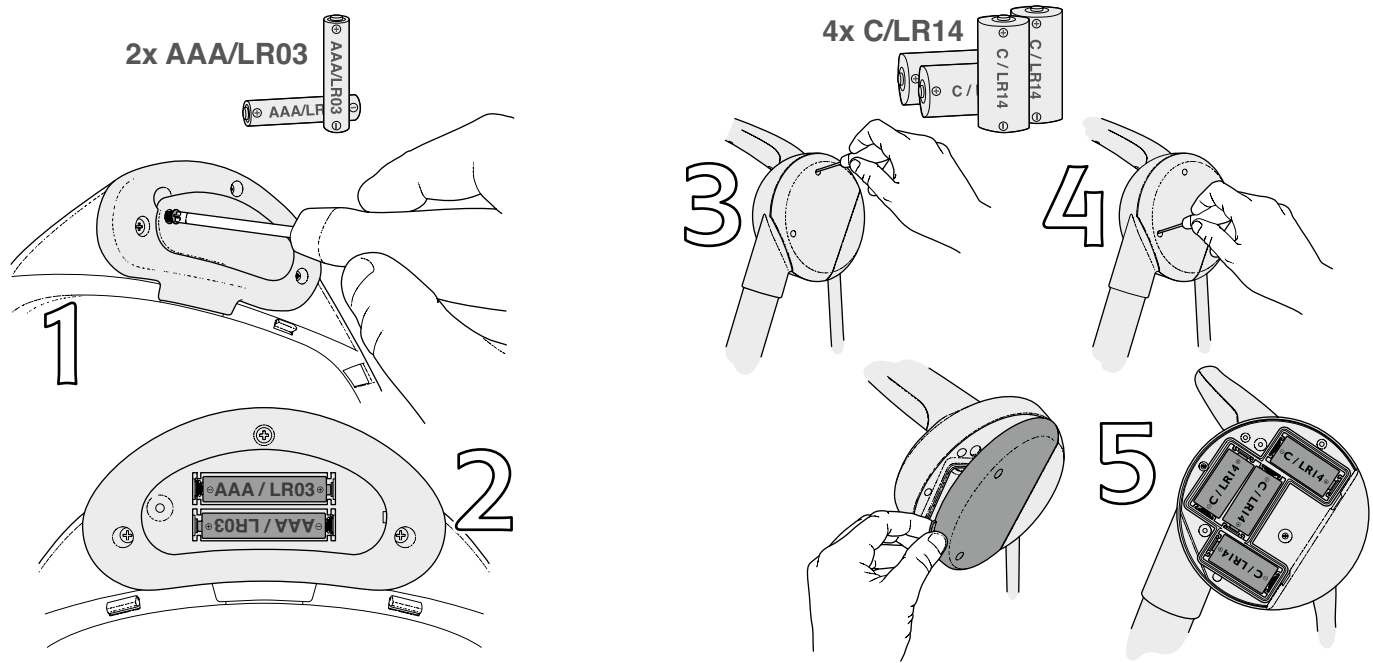
Releasing the harness: Push the two tabs (4) on the locking catch inwards whilst pulling the two sections apart (5).

Attaching the toys and play arch



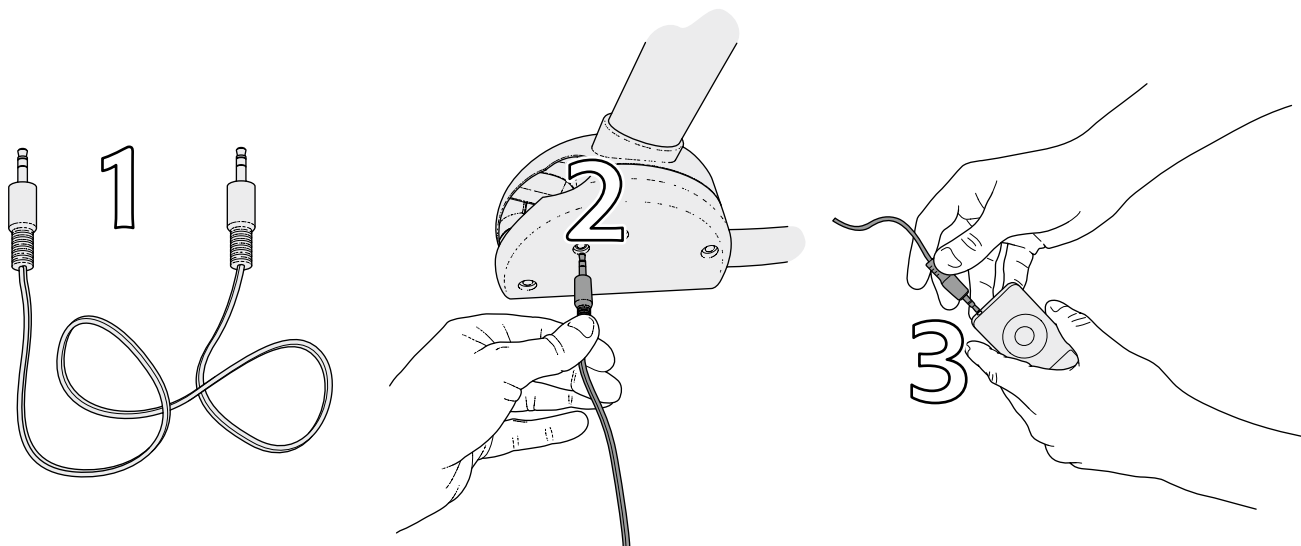
Slot the clips on the ends of the toy arch (1) over the arms of the swing, as shown in the diagram.
Wrap the fabric straps (2) on the toys over the play arch and fasten the Velcro pads (3) on the ends of the straps together.
The toy arch can also be fitted in the reverse position for when the seats backrest is in the lowest position.

Inserting the batteries



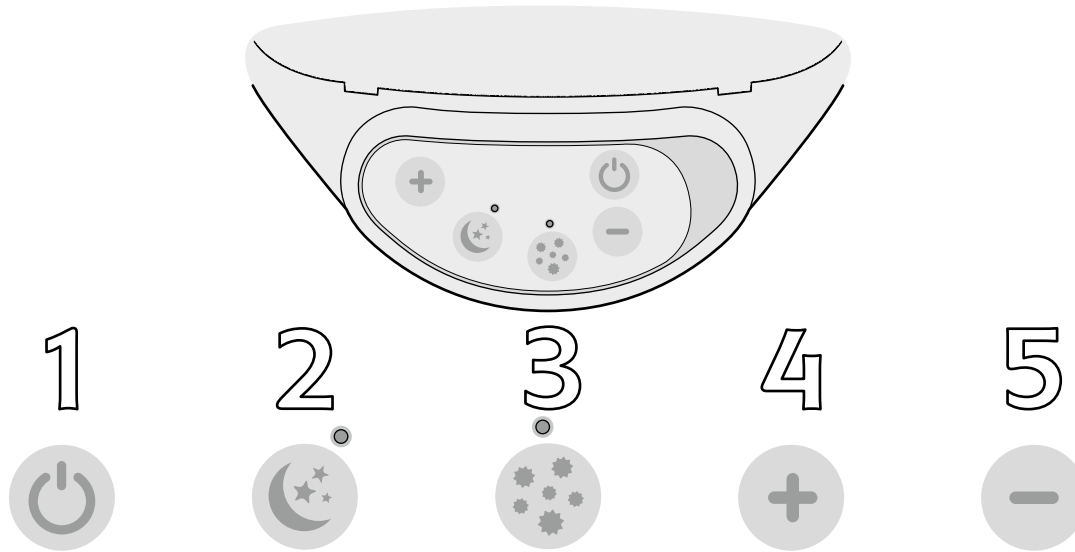
Canopy batteries: Remove the screw from the battery plate (1) in the underside of the canopy control panel with a cross head screwdriver. Insert two AAA 'LR03' batteries (2) into the compartment. Ensure that the battery polarities are correctly aligned. Refit the battery cover over the battery compartment.

Swing batteries: Remove the two screws holding the battery plate in place (3) on the left side of the frame with a cross head screwdriver (4). Remove the cover and place to one side. Insert four C 'LR14' batteries into the compartments (5). Ensure that the battery polarities are correctly aligned. Refit the battery cover over the battery compartment.



The Starlite Swing is equipped with a jack port on the plastic housing on the rear right leg. This enables you to plug in any audio device that has a 3mm headphone outlet built in to it. To use the system: Insert one of the jack plugs (1) into the outlet in the rear housing (2) of the swing. Insert the other jack plug into the outlet of the audio device (3).

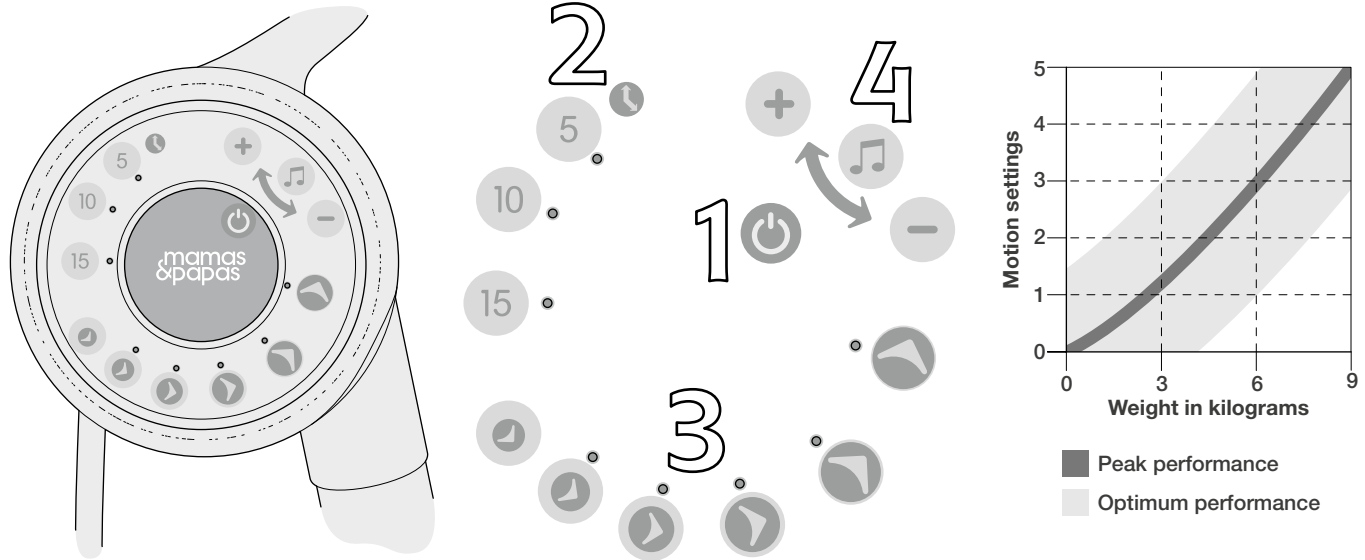
Important: Check that volume on the audio unit is turned down as this will control the volume of the sound emitted by the Starlite Swing (not the volume control on the swing).




On the front of the canopy there is the control panel for the lights functions.

1. **Power on/off:** Press this button to switch the canopy lights on and off.
 2. **Starlight mode:** This makes individual lights on the canopy flash in a random pattern.
 3. **Cascade mode:** This makes the lights on the underside of the canopy cascade in a line across the underside of the canopy.
 4. **Speed up:** Press this button to increase the speed of the lighting effects.
 5. **Slow down:** Press this button to decrease the speed of the lighting effects.
-

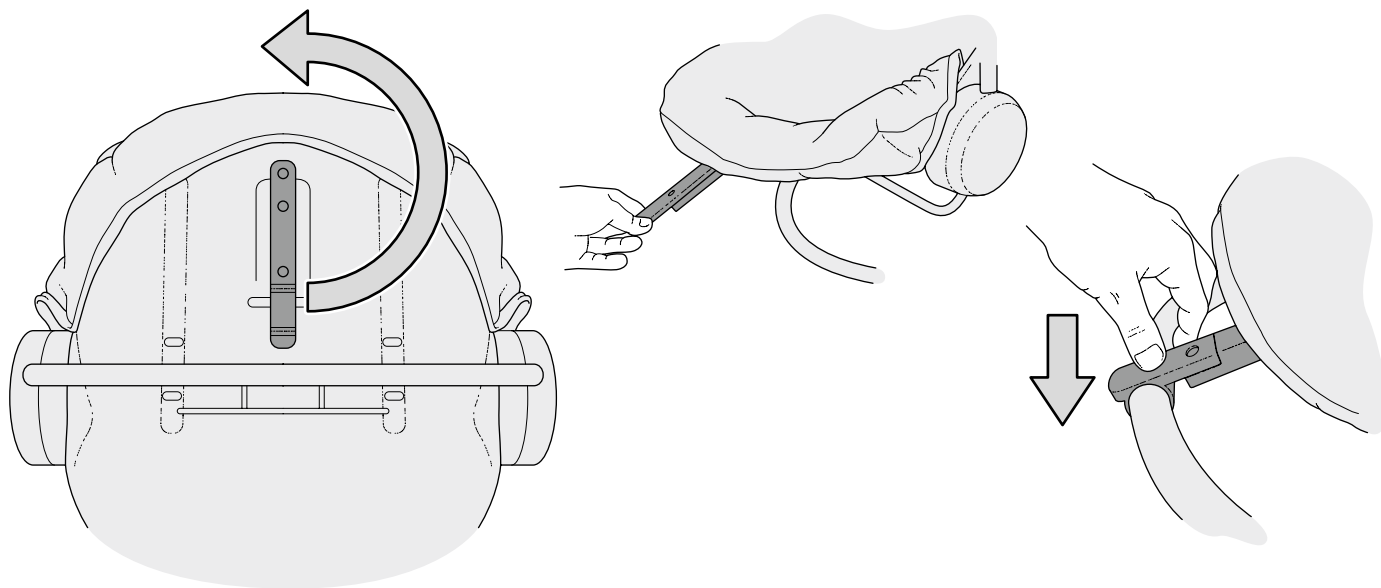
Operating the swing



On the right side of the frame there is the control panel for the swing and sound functions.

- 1. Swing power on/off:** Press this button to activate and switch off the swing function.
- 2. Timer:** This regulates the length of time the swing will run for either 5, 10 or 15 minutes then it will automatically turn itself off.
- 3. Motion setting:** This setting is used to provide the optimum swinging motion dependent on the weight of your child, see graph. Pressing  will stop the swing without interrupting the timer. You may need to gently push the swing to get it started.
- 4. Music:** Press the middle button to activate the music. Press the button again and you can scroll through the tunes available. Press the + button to increase the volume of the music. Press the - button to decrease the volume of the music. Press and hold the middle button in and the music function will switch off.

Using the frame lock



The swinging seat can be locked into position.
Under the front of the seat there is a locking arm.
To lock the seat in place rotate the lock through 180°.
Push the end of the locking arm over the metal tube at the front of the swing.

To undo the lock, simply pull it up and rotate it back under the seat.

Helpful Hints

Before using the swing, please read these helpful hints in addition to the user manual.

Before starting the swing motion, make sure that the seat locking clasp has been unclipped from the frame. Remove all other obstructions before starting the swing.

Do not attempt to stop the swing motion by holding the seat while the power is on — this will reduce the lifetime of the product.

Problem	Solution
The swing motion, music or light-show do not turn on.	Remove the battery cover and check the batteries are correctly fitted. If the canopy still does not turn on, remove the batteries and replace with new or fully charged batteries.
The Starlite canopy light-show will not turn off.	This is caused by low battery power. Remove and discard all batteries — replace with new or fully charged batteries.
The swing motion and music become erratic.	This is caused by low battery power. Remove and discard all batteries — replace with new or fully charged batteries.
When using the 'plug and play' input the volume is too low or high.	The 'plug and play' volume is controlled by the device being used, not the swing volume. Turn the volume down on the 'plug and play' device before connecting — once connected increase the volume until the desired level is achieved.
The swing is too fast or too slow.	Use the motion settings to adjust the speed according to the weight of the baby. Use motion setting 1 or 2 for newborns. Use higher motion settings for heavier babies.
The swing power turns on but the swing motion does not start.	Give the seat a gentle push to start the motion. This may be necessary with heavier babies (8kg–9kg).

WARNING:

- Never leave the child unattended.
 - Do not use this product once your child can sit up unaided or weighs more than 9kg.
 - This product is not intended for prolonged periods of sleeping.
 - Never use this product on an elevated surface (e.g. a table).
 - Always use the restraint system.
 - To avoid injury ensure children are kept away when unfolding and folding this product.
 - Do not let children play with this product.
 - Do not move or lift this product with the baby inside.
 - When the product is connected to a music player, ensure that the volume of the music player is set to a low value.
 - This product does not replace a cot or a bed. Should your child need to sleep, then it should be placed in a suitable cot or bed.
 - Do not use if any parts are broken, torn or missing.
 - Do not use accessories or replacement parts other than those approved by the manufacturer.
 - When the product is not in use, store away from children and remove the batteries.
-

Care & Maintenance

- Assemble and adjust the Starlite Swing with care.
 - Occasionally clean the metal and plastic parts with a proprietary polish. Do not use abrasives or bleach.
 - Check the attached wash care label for more information.
 - Prolonged and direct exposure to bright sunlight can change the fabrics colours. Try to limit if possible.
 - This product uses class 1 LED's.
-

Battery Information:

- Only an adult should access the battery compartment.
 - Ensure that the battery compartment is securely closed before the product is used by your child.
 - Do not mix new and used batteries.
 - Do not mix different types of batteries.
 - Only use replacement batteries of the type recommended.
 - Always remove exhausted batteries from the product.
 - Do not attempt to charge non rechargeable batteries.
 - Remove rechargeable batteries before charging.
 - Charge under adult supervision.
 - The batteries must be inserted with the correct polarity.
 - Do not short-circuit the supply terminals.
 - Remove the batteries when the product is not being played with for extended periods of time.
 - For optimum performance Mamas & Papas recommend using high power, alkaline batteries, for example Energizer or Duracell.
-

Battery Disposal:

- Dispose of exhausted batteries at an official waste disposal site.
 - Do not burn or place in household waste.
-



Mamas & Papas,
Huddersfield, HD5 0RH

EN T: +44 (0)345 268 2000

USA T: 1-800-490-0331

CA T: 1-800-667-4111

AUS T: 1300 814 557

Designed and distributed
by Mamas & Papas in the UK
© 2017 Mamas & Papas Ltd
All rights reserved.

mamasandpapas.com
mamasandpapas.ca
mamaspapas.kr

┌ ┐

LOT

└ ┘