

mamas  
& papas®

---

evolve changer

EVCR\_0244\_0117\_V6

© Mamas & Papas Ltd. 2017



*thank you...*

FOR ORDERING FROM MAMAS & PAPAS

---

Mamas & Papas started life as a family, then became a business.

The founders wanted more for their children, so they took matters into their own hands.

This core belief remains at the heart of what we do, using personal experiences, customer insights and rigorous testing, to create innovative products with thoughtful designs.

We bring style and confidence to parenting, letting you flourish, no matter how you experience it.

---

**IMPORTANT:**

EN

**RETAIN FOR FUTURE REFERENCE.  
READ CAREFULLY.**

---



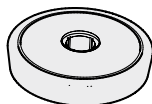
# What's in the box

**A** x2

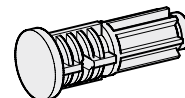


Sx = Left  
 Dx = Right

**B** x2



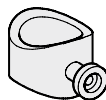
**C** x2



**D** x2



**E** x5



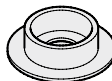
**F** x5



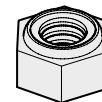
**G** x1



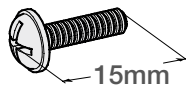
**H** x1



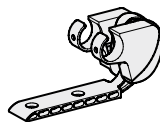
**i** x1



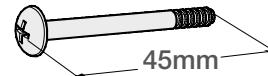
**J** x4



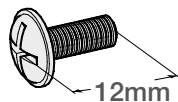
**K** x2



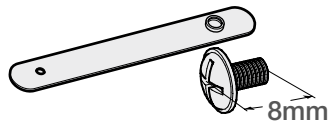
**L** x4



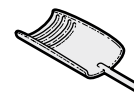
**M** x4



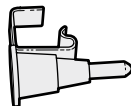
**N** x1



**O** x1



**P** x1

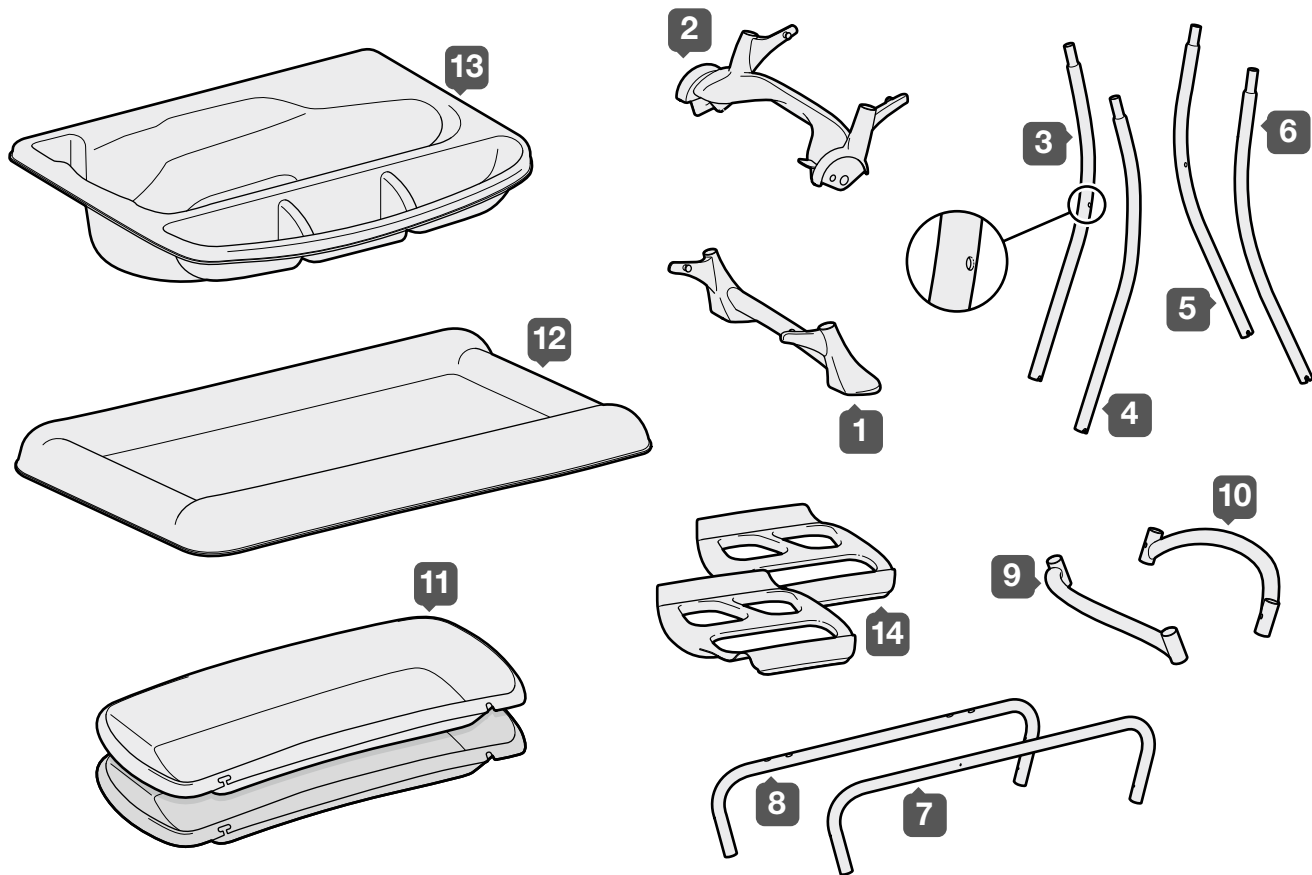


**Q** x1

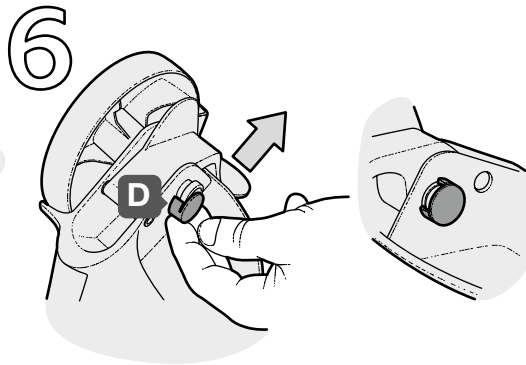
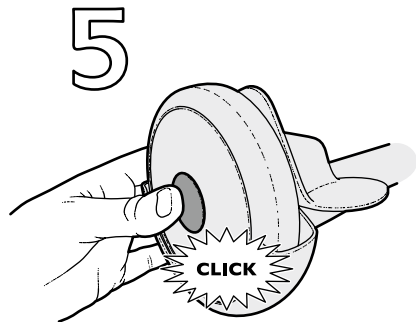
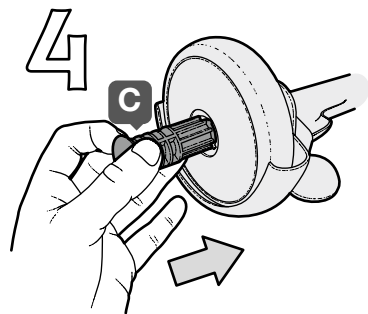
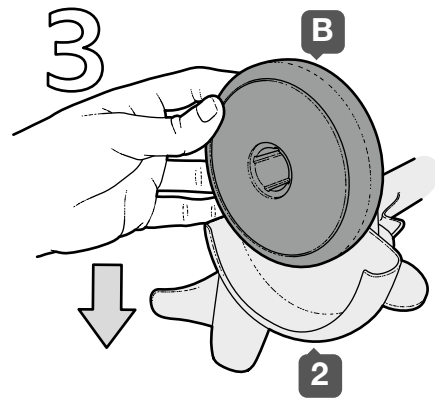
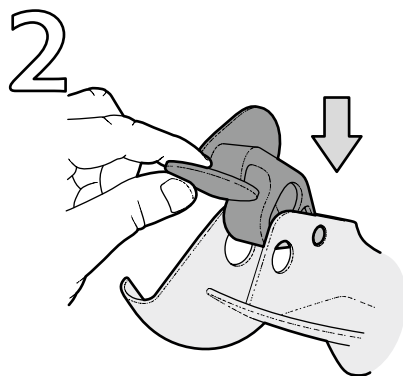
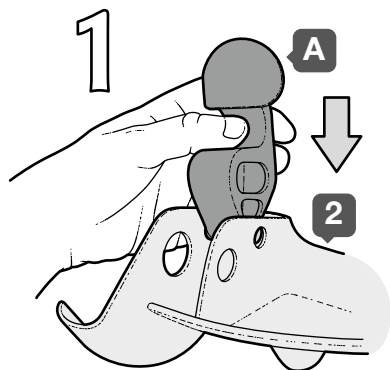


0mm 10 20 30 40 50 60 70 80 90 100

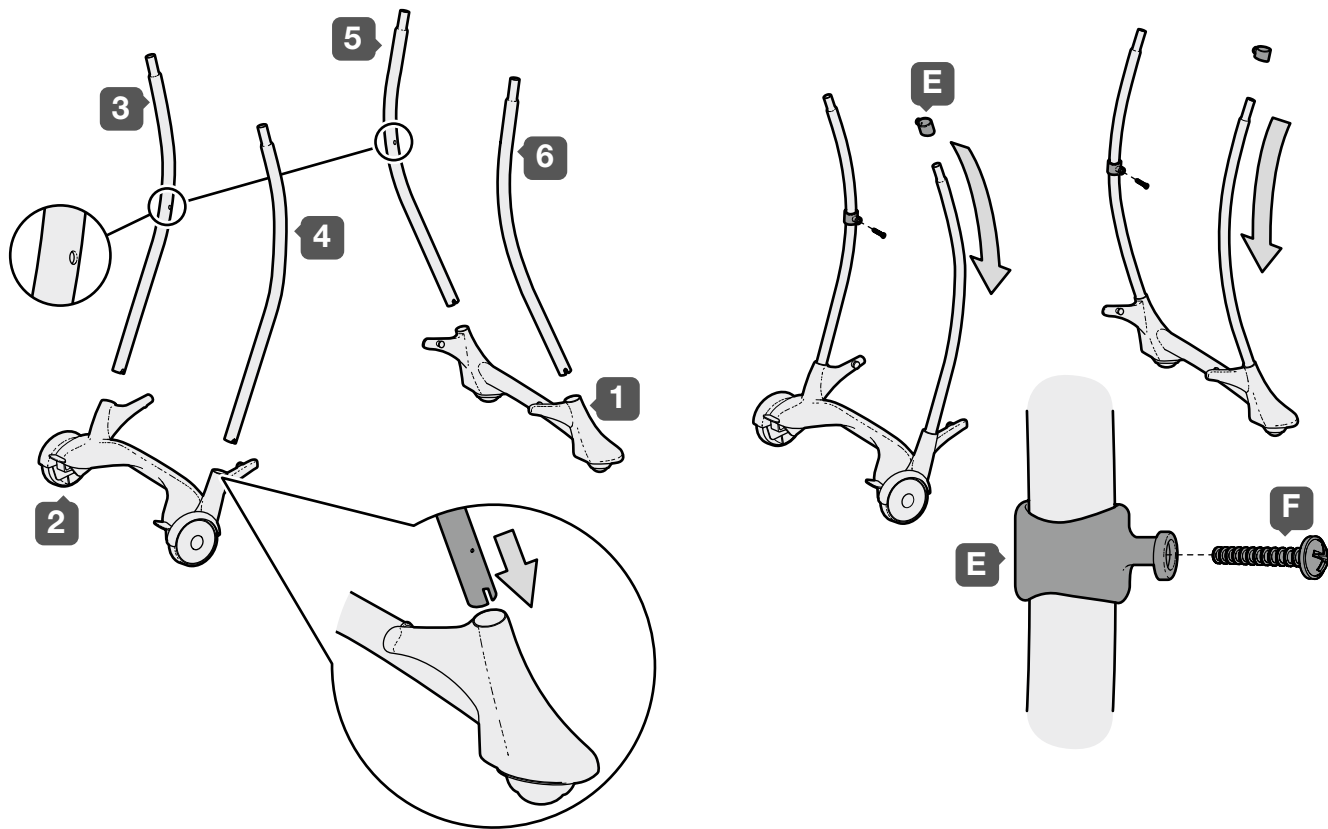
What's in the box



## Assembling the rear wheels

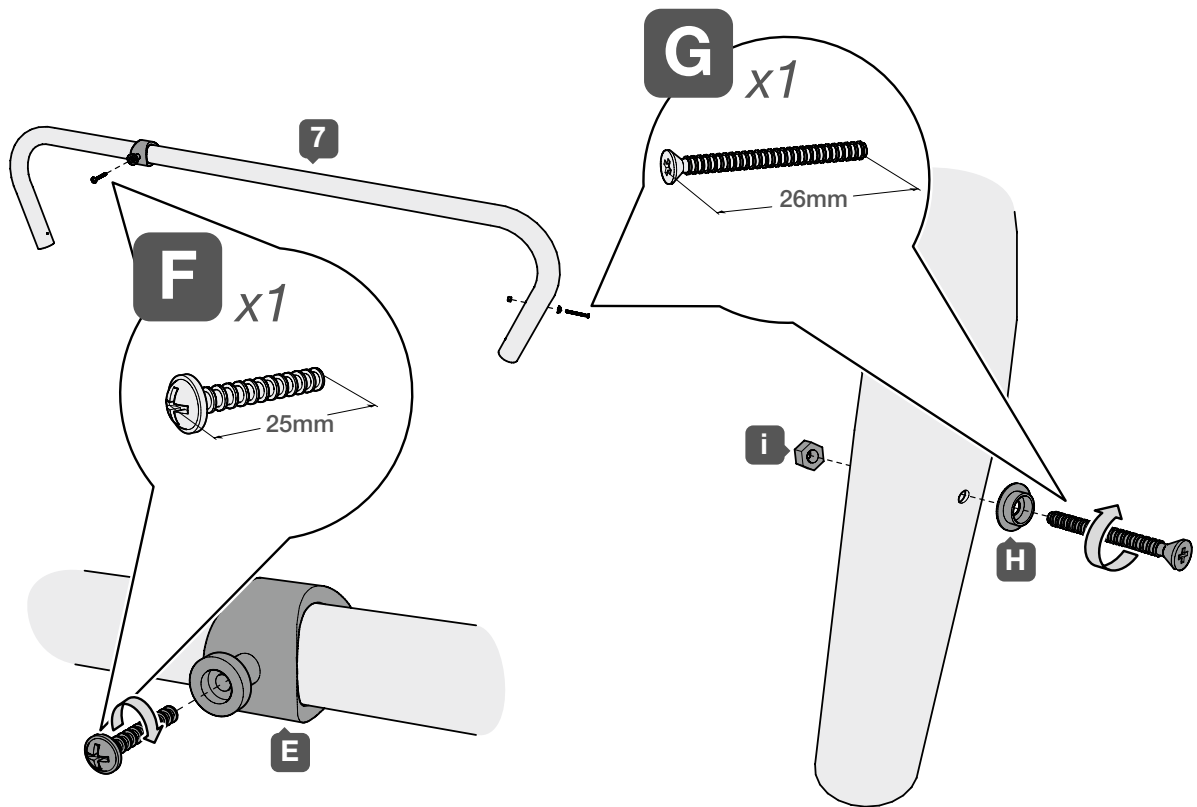


## Assembling the legs



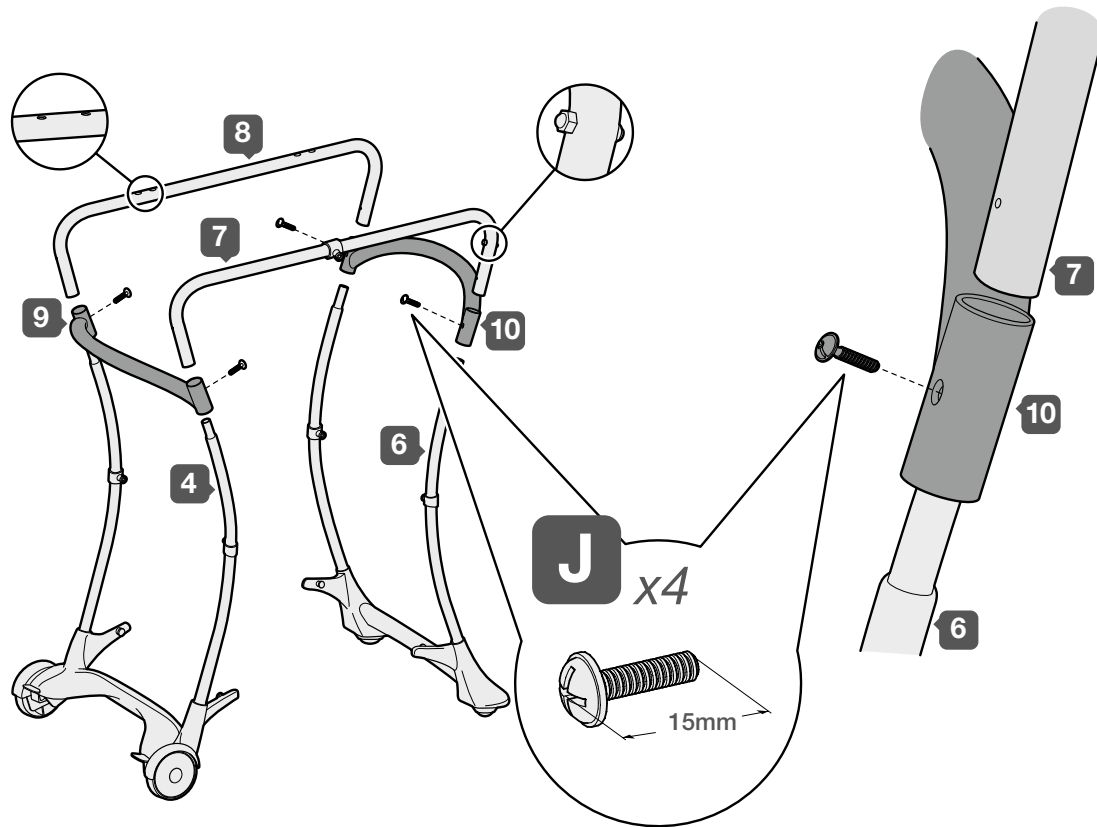
## Assembling the front tube

---

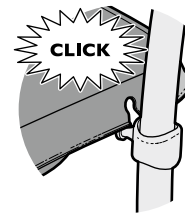
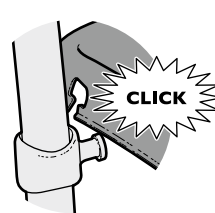
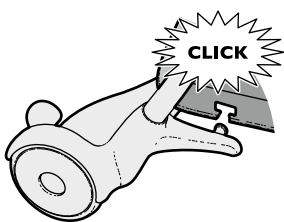
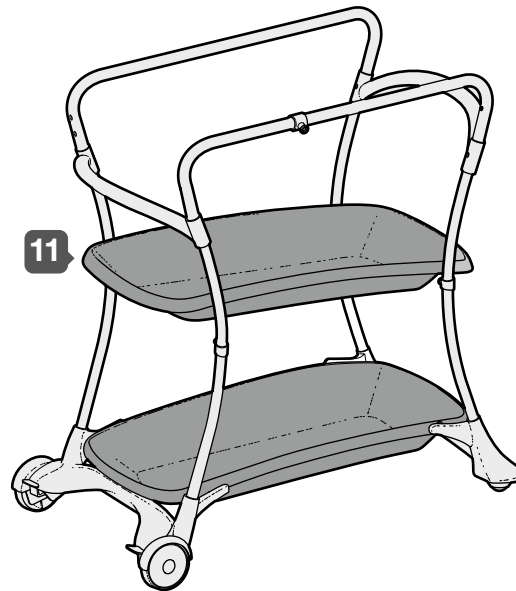
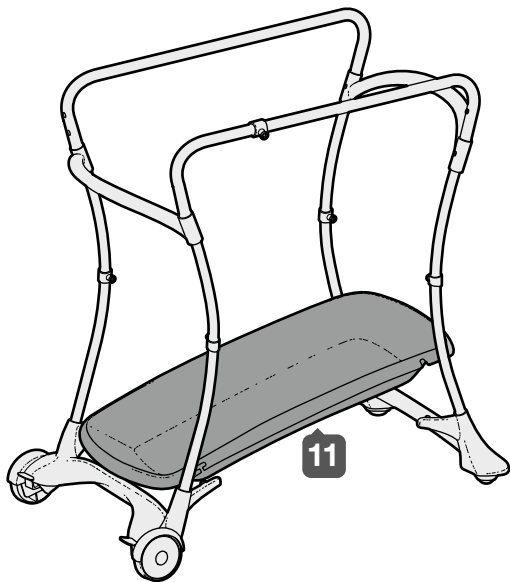




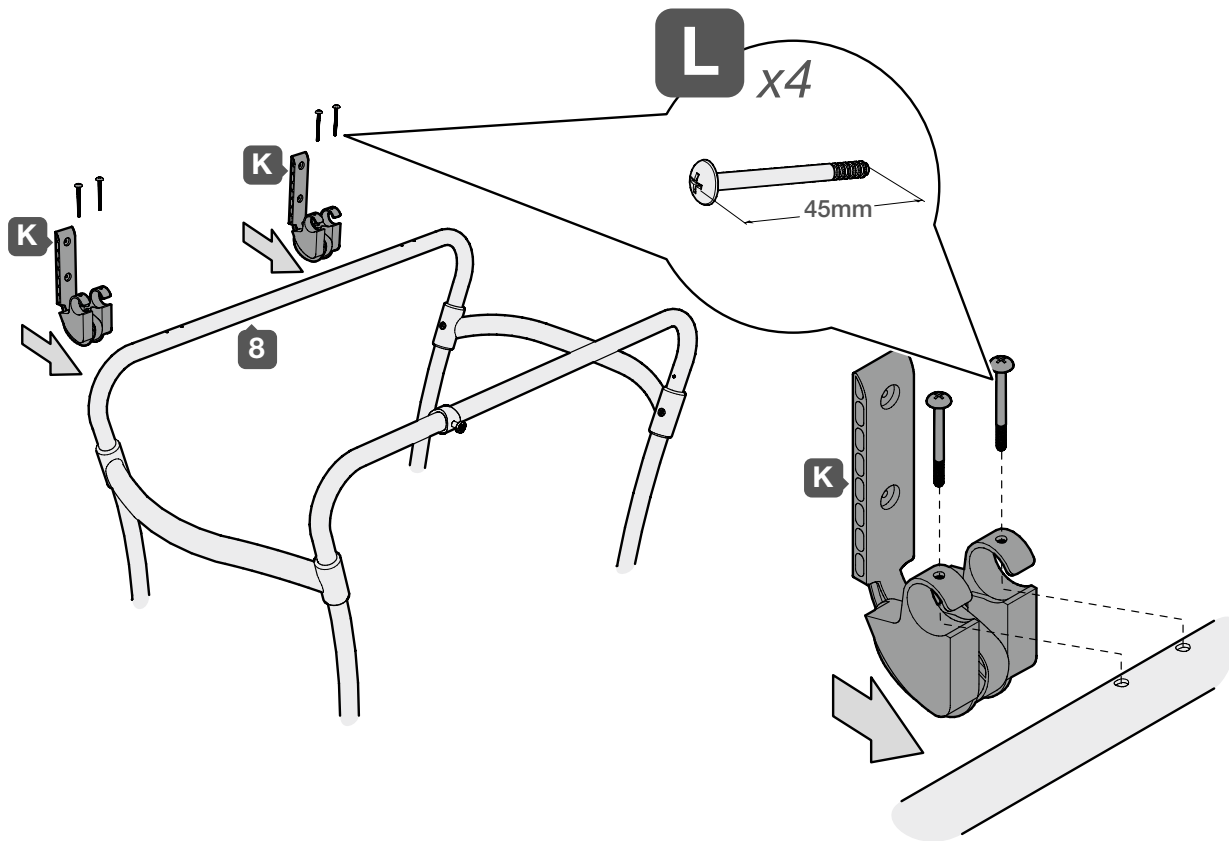
## Fitting the top rails



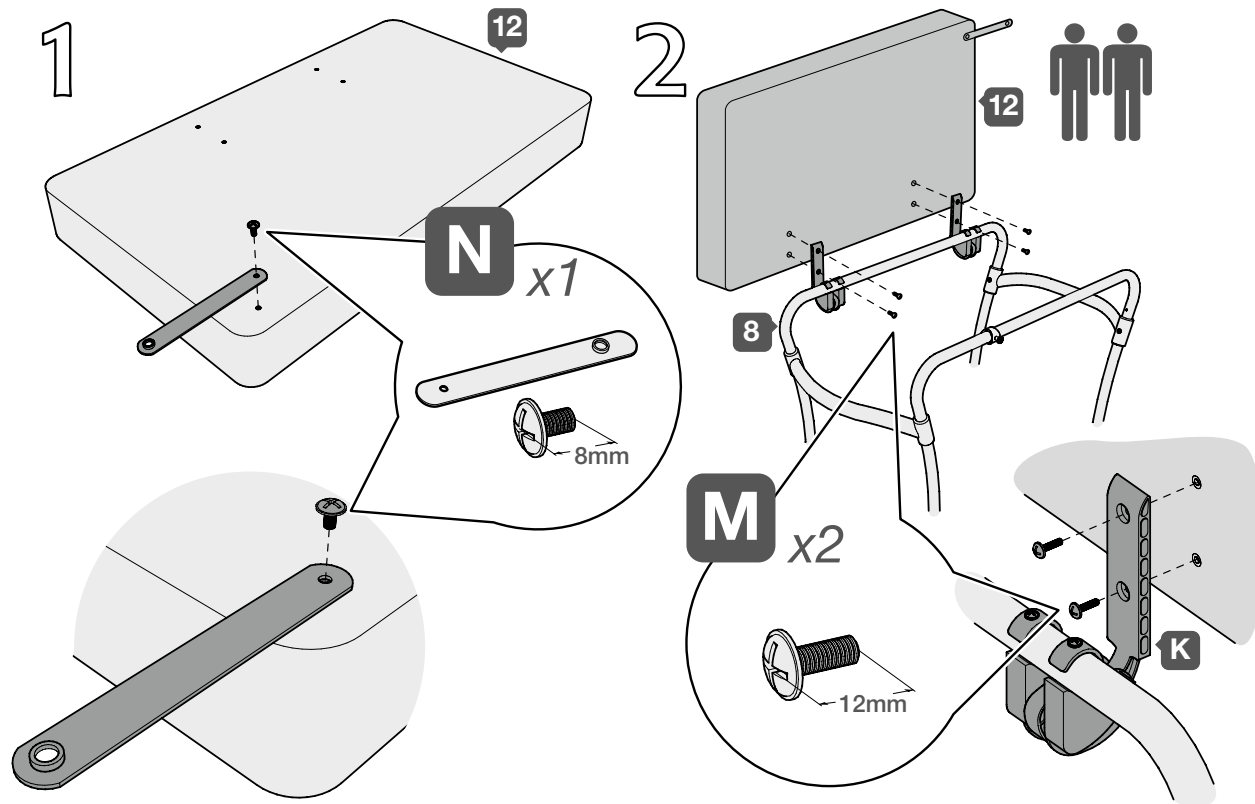
## Fitting the shelves



## Attaching the hinges

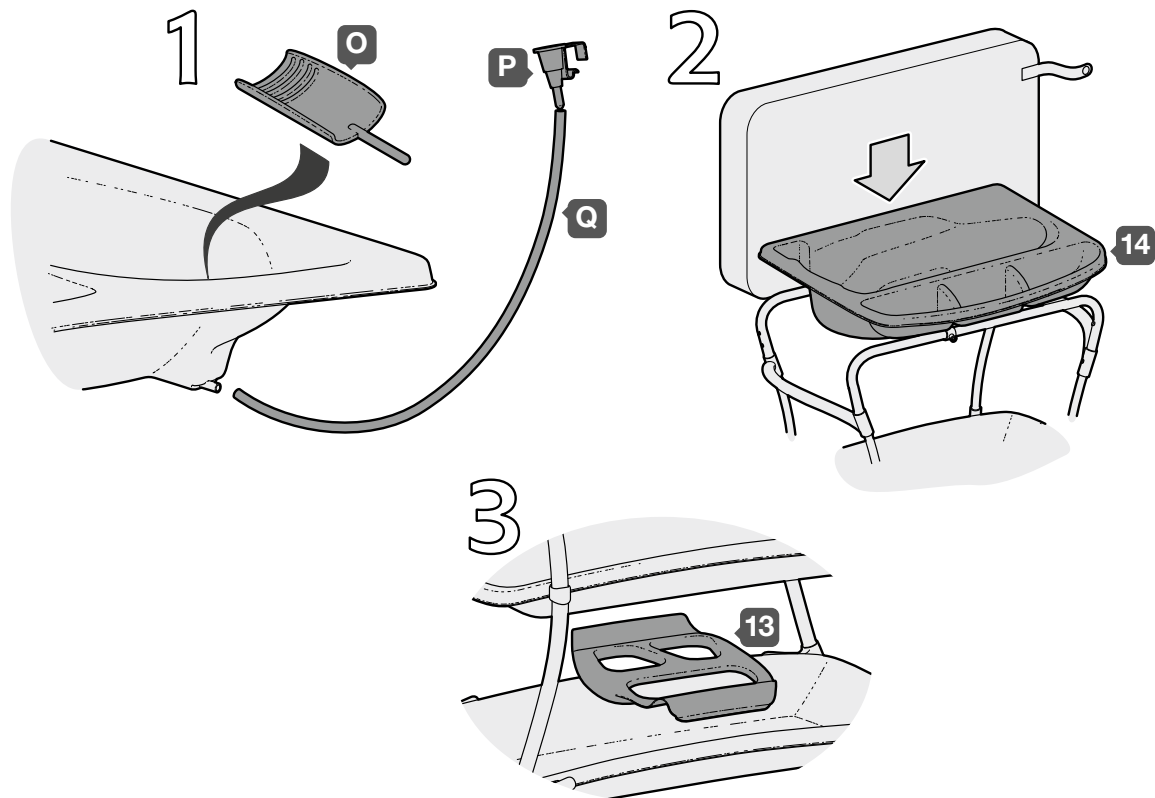


Attaching the changer top



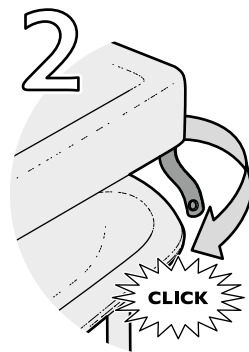
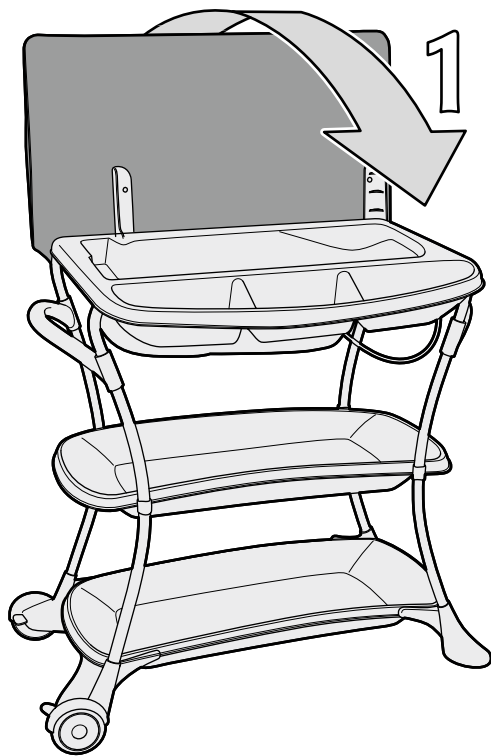
## Fitting the bath

---



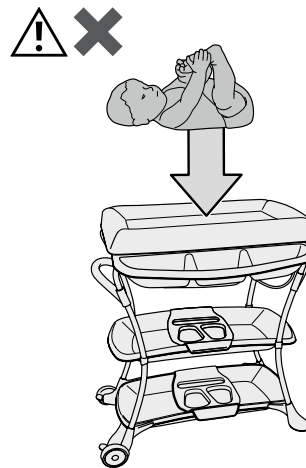
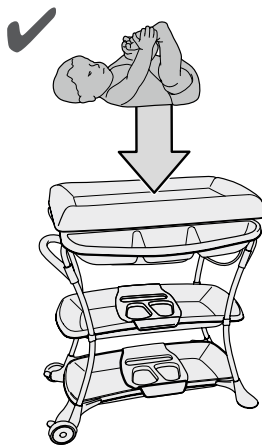
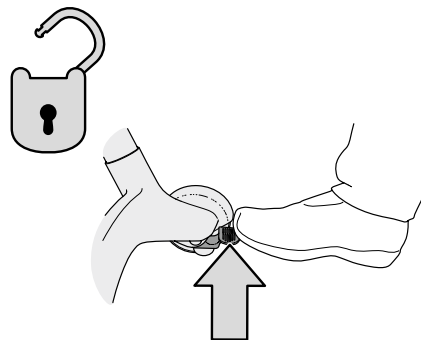
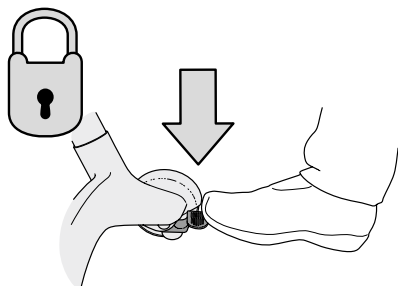
## Closing and securing the changer top

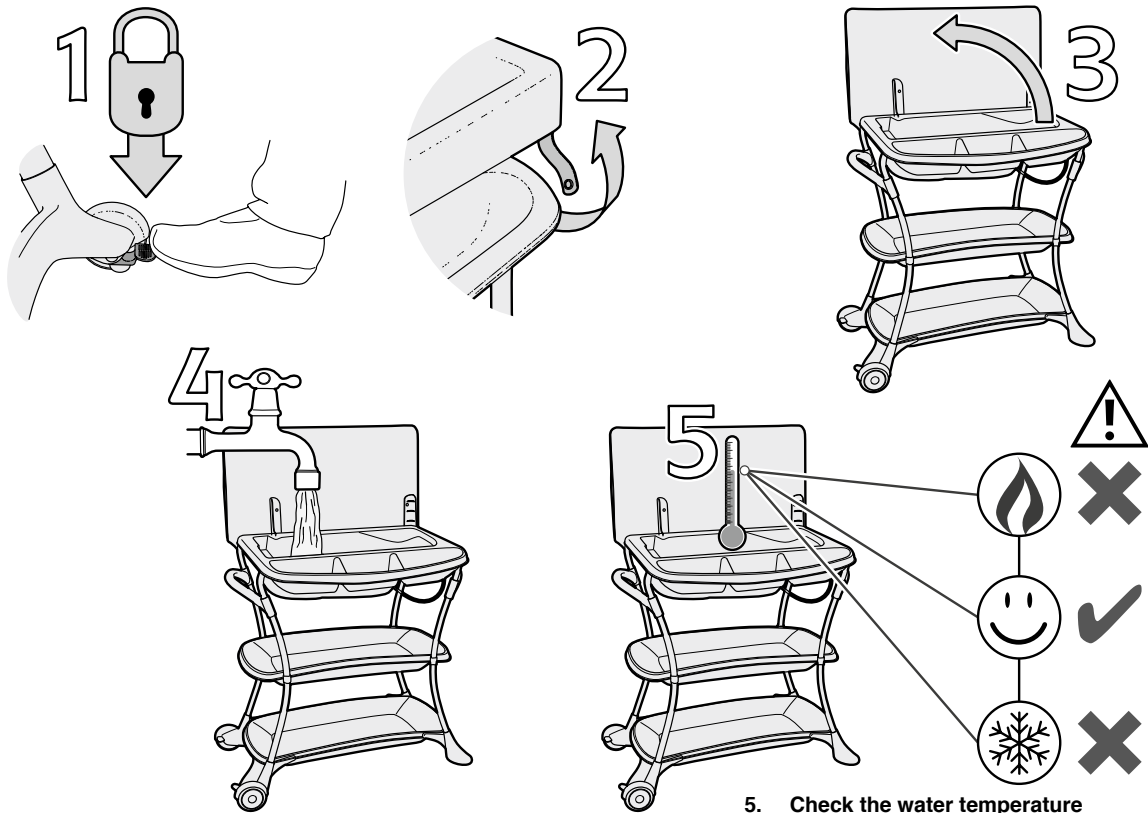
---



## Using the changer

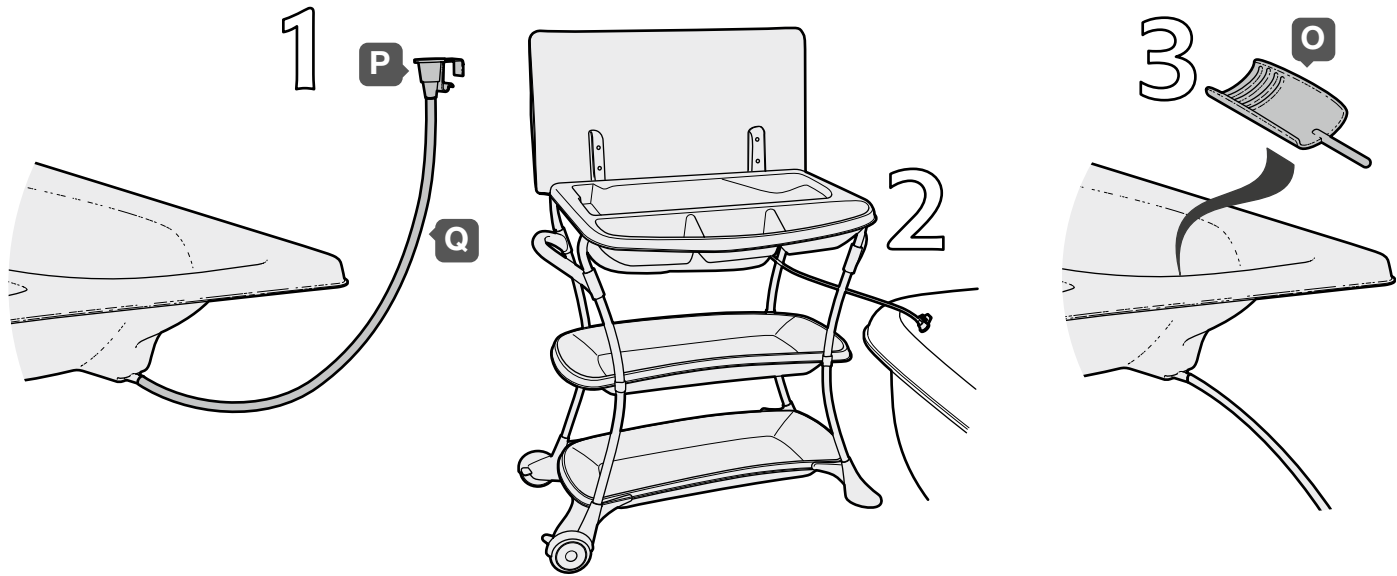
---





5. Check the water temperature before placing the child in the bath.





**1. Release the funnel from the side of the bath**

**2. Place in the water receptacle i.e. a bath or sink.**

**3. Remove the plug and the bath will drain.**

## **WARNING:**

- A child's safety is your responsibility.
- Do not leave the child unattended. Always watch your child when in the bath or on the changing surface. Before putting your child on the changing station make certain that everything you will need is at hand e.g. towels, nappies, shampoo, etc.
- Before using your changing station always make certain that it is on a flat, stable surface and the bath is fitted.
- Never use the changer without the bath fitted.
- When lockable castors/wheels are fitted, they shall be locked when the changing unit is in use.
- When using the bath always ensure the changing surface is properly folded back.
- Check the water temperature before placing the child in the bath.
- Regularly check that all screws and fittings are correctly tightened. Loose screws could pinch parts of the babies skin or snag clothing or dummies leading to the risk of strangulation.
- Be aware of the risk of open fires or sources of strong heat such as electric bar or gas fires etc. in the near vicinity of the changing unit. Open fires and heating appliances (particularly portable types) should be adequately guarded by a nursery type fire guard (note that spark guards and the grill on many fires are unlikely to be adequate).
- Maximum age/weight of the child 12 months/11kg.
- Do not use if any part of the changing unit is broken, torn or missing.
- Only use replacement parts or accessories supplied by or approved by Mamas & Papas.
- Do not manoeuvre the Changer/Bath whilst child is on/in the product.
- Clean the changing surface and frame with a sponge or cloth dipped in warm water with a mild detergent. Always thoroughly dry the changing station after cleaning. Do not use bleach or abrasive substances to clean the changing station.
- Compliant with BS EN12221:2008 + A1:2013

Notes

---

---



